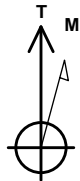
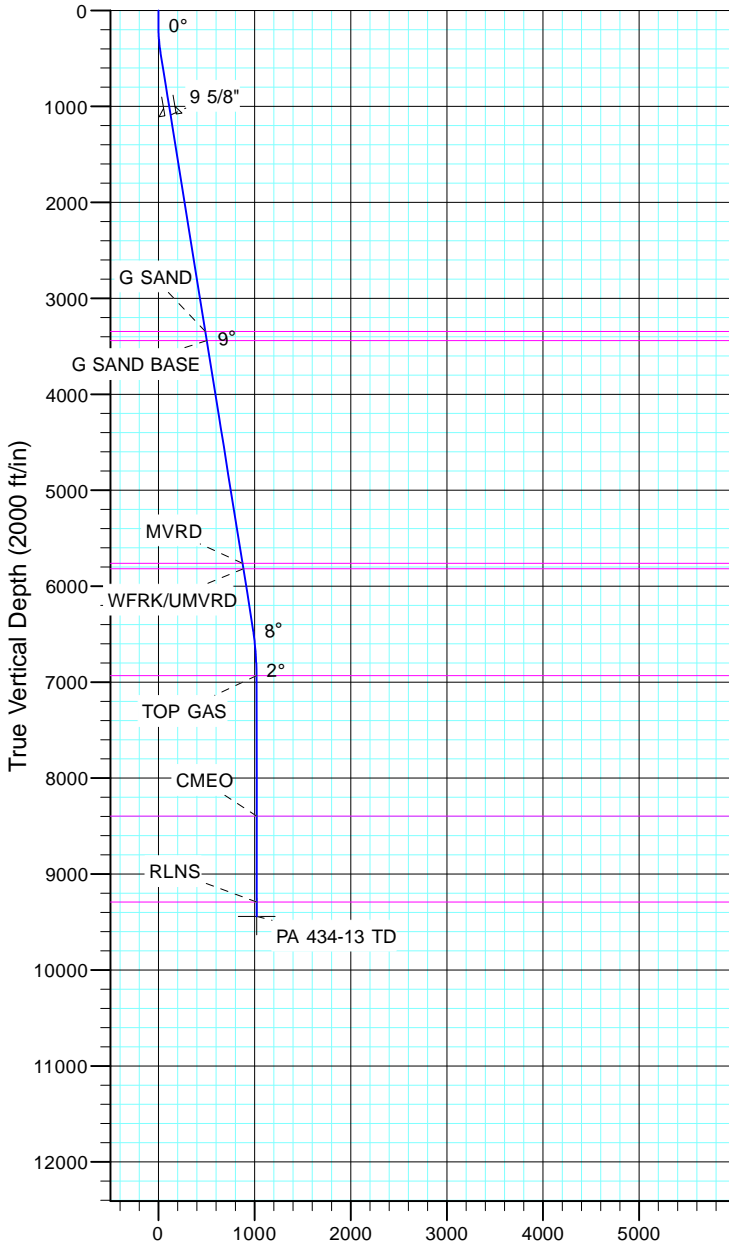


TEP Rocky Mountain LLC
Project: Garfield County, CO NAD83
Site: PA 44-13
Well: PA 434-13
Wellbore: OH
Design: Plan #1



Azimuths to True North
Magnetic North: 11.43°

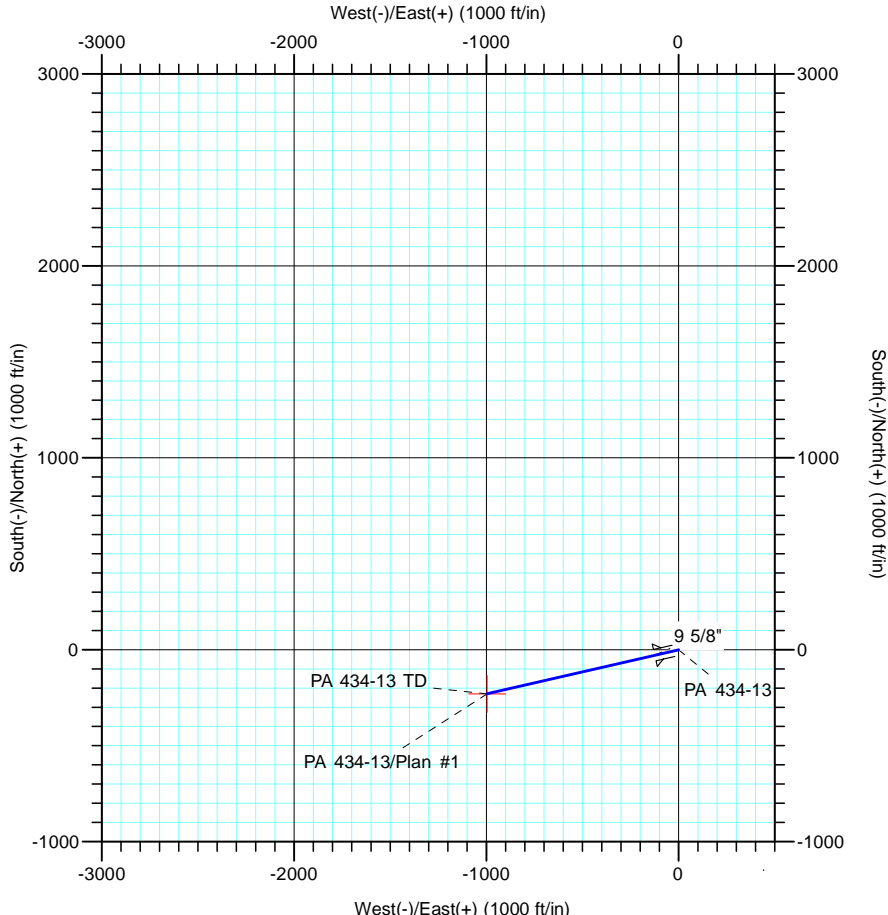
Magnetic Field
Strength: 53064.3nT
Dip Angle: 66.02°
Date: 12/31/2004
Model: IGRF2000



Vertical Section at 257.03° (2000 ft/in)

CASING DETAILS			
TVD	MD	Name	Size
1090.6	1100.0	9 5/8"	9.625

FORMATION TOP DETAILS		
TVDPath	MDPath	Formation
3347.0	3385.2	G SAND
3440.0	3479.4	G SAND BASE
5762.0	5831.0	MVRD
5818.0	5887.8	WFRK/UMVRD
6933.0	7012.5	TOP GAS
8397.0	8476.5	CMEO
9293.0	9372.5	RLNS



DESIGN TARGET DETAILS							
Name	TVD	+N/-S	+E/-W	Northing	Easting	Latitude	Longitude
PA 434-13 TD	9443.0	-229.5	-996.0	1623560.40	2310245.30	39° 31' 11.849 N	107° 56' 43.242 W

SECTION DETAILS										
Sec	MD	Inc	Azi	TVD	+N/-S	+E/-W	Dleg	TFace	V Sect	Target
1	0.0	0.00	0.00	0.0	0.0	0.0	0.00	0.00	0.0	
2	150.0	0.00	0.00	150.0	0.0	0.0	0.00	0.00	0.0	
3	453.5	9.11	257.03	452.3	-5.4	-23.5	3.00	257.03	24.1	
4	6455.4	9.11	257.03	6378.5	-218.6	-949.1	0.00	0.00	973.9	
5	7062.5	0.00	0.00	6983.0	-229.5	-996.0	1.50	180.00	1022.1	
6	9522.5	0.00	0.00	9443.0	-229.5	-996.0	0.00	0.00	1022.1	PA 434-13 TD