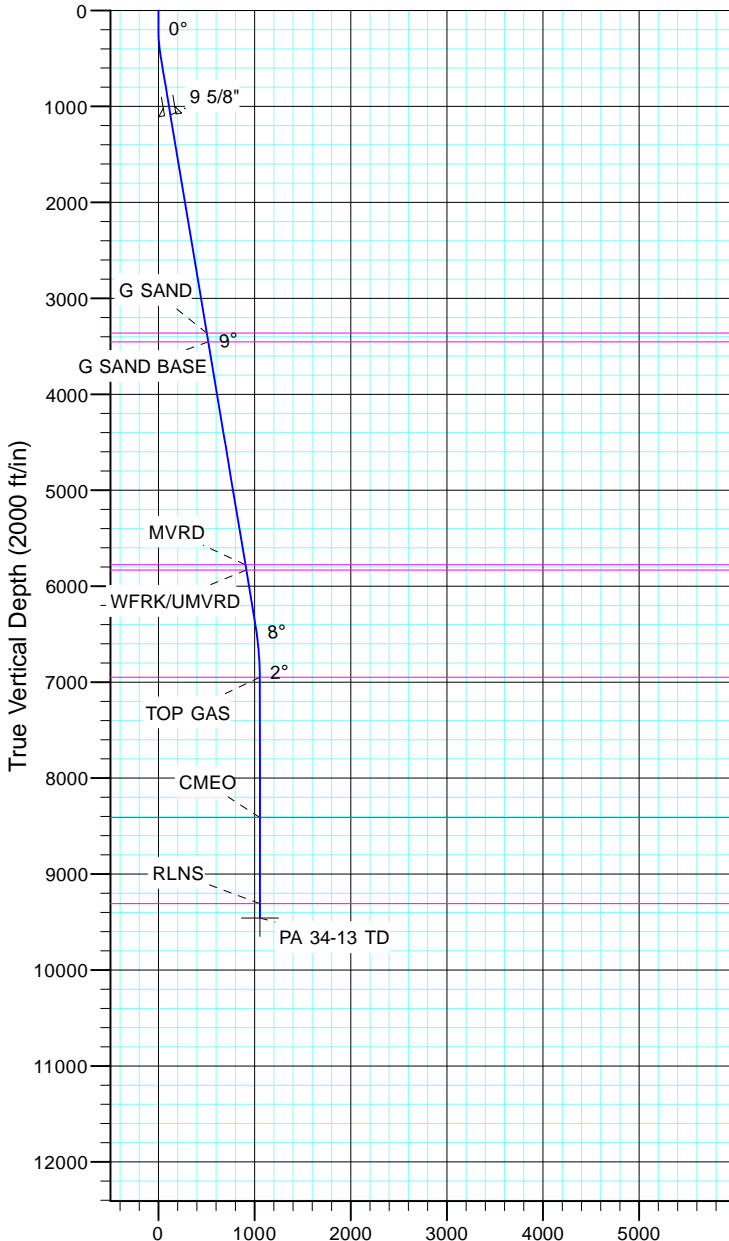


TEP Rocky Mountain LLC
Project: Garfield County, CO NAD83
Site: PA 44-13
Well: PA 34-13
Wellbore: OH
Design: Plan #1



Azimuths to True North
Magnetic North: 11.43°

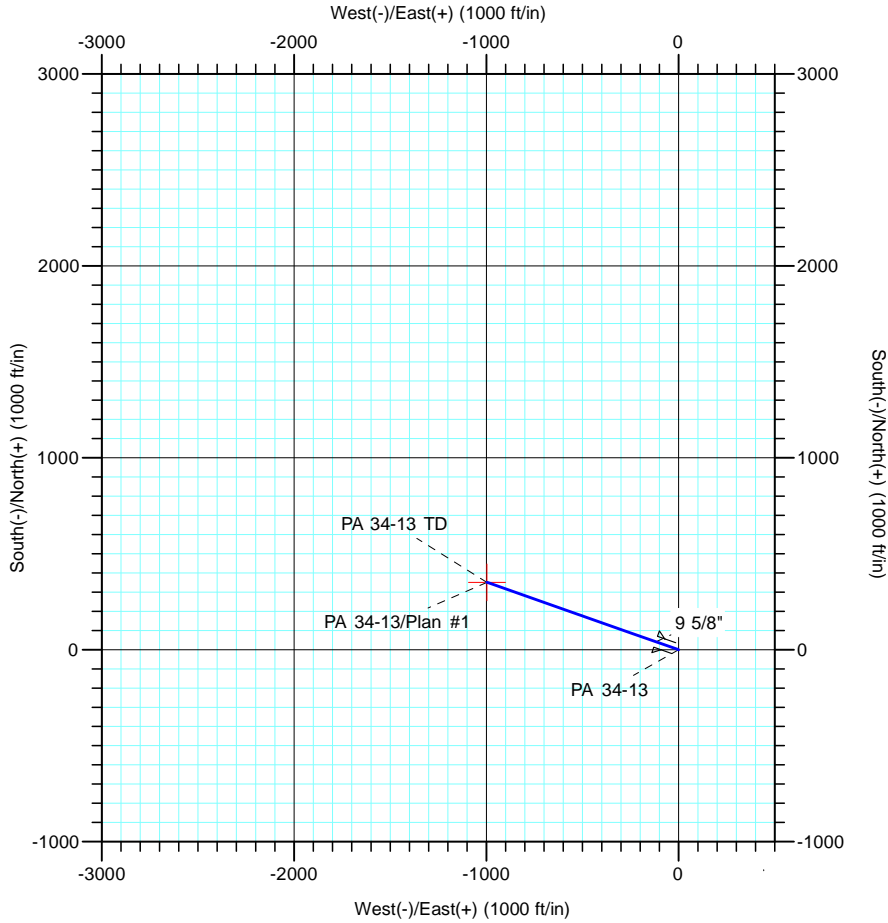
Magnetic Field
Strength: 53064.3nT
Dip Angle: 66.02°
Date: 12/31/2004
Model: IGRF2000



Vertical Section at 289.45° (2000 ft/in)

CASING DETAILS			
TVD	MD	Name	Size
1090.4	1100.0	9 5/8"	9.625

FORMATION TOP DETAILS		
TVDPath	MDPath	Formation
3362.0	3402.9	G SAND
3455.0	3497.2	G SAND BASE
5777.0	5851.2	MVRD
5833.0	5907.9	WFRK/UMVRD
6948.0	7033.2	TOP GAS
8412.0	8497.2	CMEO
9308.0	9393.2	RLNS



DESIGN TARGET DETAILS						
Name	TVD	+N/-S	+E/-W	Northing	Easting	Latitude
PA 34-13 TD	9458.0	351.8	-996.1	1624160.50	2310245.30	39° 31' 17.778 N

SECTION DETAILS										
Sec	MD	Inc	Azi	TVD	+N/-S	+E/-W	Dleg	TFace	V Sect	Target
1	0.0	0.00	0.00	0.0	0.0	0.0	0.00	0.00	0.0	
2	180.0	0.00	0.00	180.0	0.0	0.0	0.00	0.00	0.0	
3	495.1	9.45	289.45	493.7	8.6	-24.5	3.00	289.45	25.9	
4	6452.9	9.45	289.45	6370.6	334.5	-947.2	0.00	0.00	1004.5	
5	7083.2	0.00	0.00	6998.0	351.8	-996.1	1.50	180.00	1056.4	
6	9543.2	0.00	0.00	9458.0	351.8	-996.1	0.00	0.00	1056.4	PA 34-13 TD