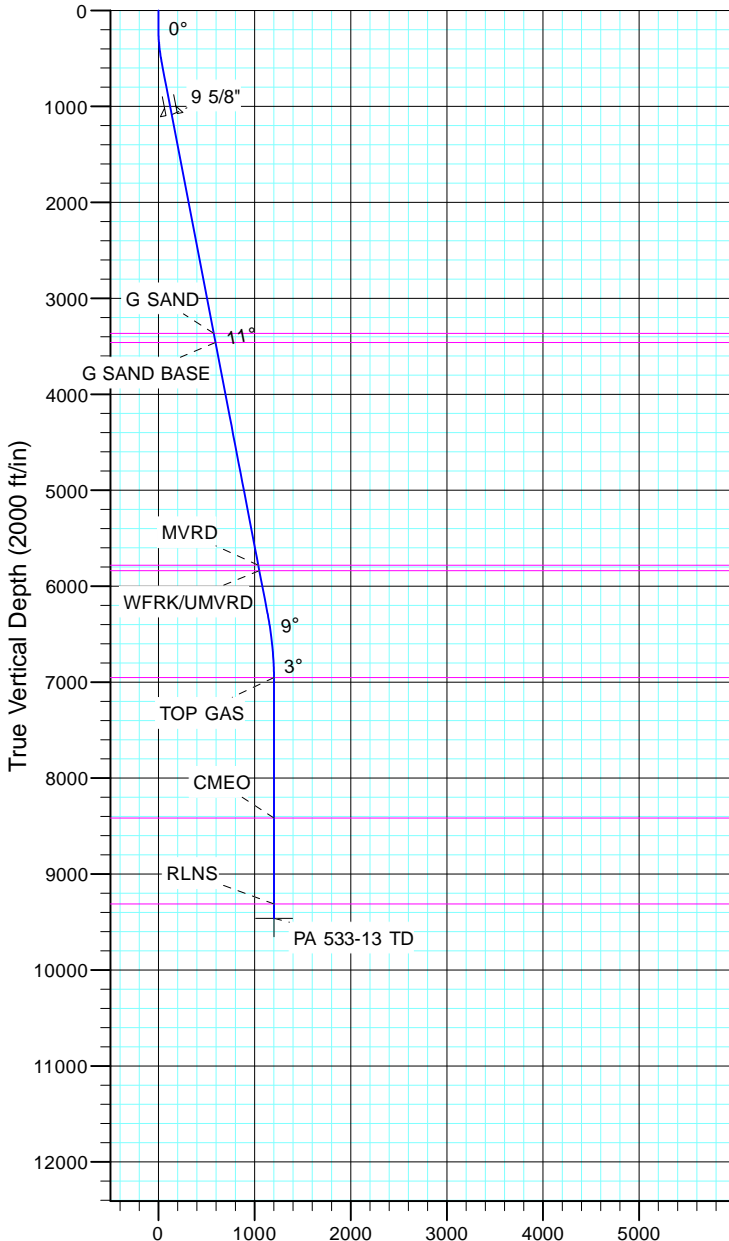


TEP Rocky Mountain LLC
Project: Garfield County, CO NAD83
Site: PA 44-13
Well: PA 533-13
Wellbore: OH
Design: Plan #1



Azimuths to True North
Magnetic North: 11.43°

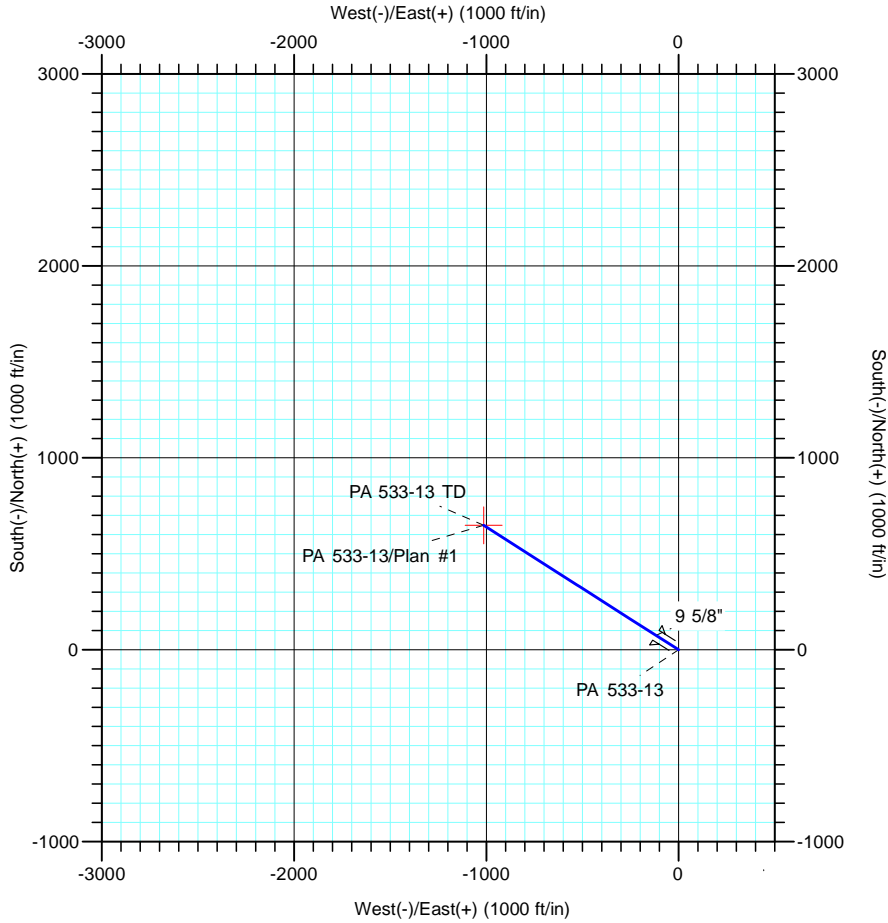
Magnetic Field
Strength: 53064.3nT
Dip Angle: 66.02°
Date: 12/31/2004
Model: IGRF2000



Vertical Section at 302.62° (2000 ft/in)

| CASING DETAILS | | | |
|----------------|--------|--------|-------|
| TVD | MD | Name | Size |
| 1087.9 | 1100.0 | 9 5/8" | 9.625 |

| FORMATION TOP DETAILS | | |
|-----------------------|--------|-------------|
| TVDPath | MDPath | Formation |
| 3367.0 | 3420.6 | G SAND |
| 3460.0 | 3515.3 | G SAND BASE |
| 5782.0 | 5879.6 | MVRD |
| 5838.0 | 5936.6 | WFRK/UMVRD |
| 6953.0 | 7064.1 | TOP GAS |
| 8417.0 | 8528.1 | CMEO |
| 9313.0 | 9424.1 | RLNS |



| DESIGN TARGET DETAILS | | | | | | | |
|-----------------------|--------|-------|---------|------------|------------|------------------|-------------------|
| Name | TVD | +N/-S | +E/-W | Northing | Easting | Latitude | Longitude |
| PA 533-13 TD | 9463.0 | 648.8 | -1013.8 | 1624460.50 | 2310245.30 | 39° 31' 20.742 N | 107° 56' 43.551 W |

| SECTION DETAILS | | | | | | | | | | |
|-----------------|--------|-------|--------|--------|-------|---------|------|--------|--------|--------------|
| Sec | MD | Inc | Azi | TVD | +N/-S | +E/-W | Dleg | TFace | VSec | Target |
| 1 | 0.0 | 0.00 | 0.00 | 0.0 | 0.0 | 0.0 | 0.00 | 0.00 | 0.0 | |
| 2 | 180.0 | 0.00 | 0.00 | 180.0 | 0.0 | 0.0 | 0.00 | 0.00 | 0.0 | |
| 3 | 541.7 | 10.85 | 302.62 | 539.6 | 18.4 | -28.8 | 3.00 | 302.62 | 34.2 | |
| 4 | 6390.6 | 10.85 | 302.62 | 6283.9 | 612.0 | -956.3 | 0.00 | 0.00 | 1135.3 | |
| 5 | 7114.1 | 0.00 | 0.00 | 7003.0 | 648.8 | -1013.8 | 1.50 | 180.00 | 1203.6 | |
| 6 | 9574.1 | 0.00 | 0.00 | 9463.0 | 648.8 | -1013.8 | 0.00 | 0.00 | 1203.6 | PA 533-13 TD |