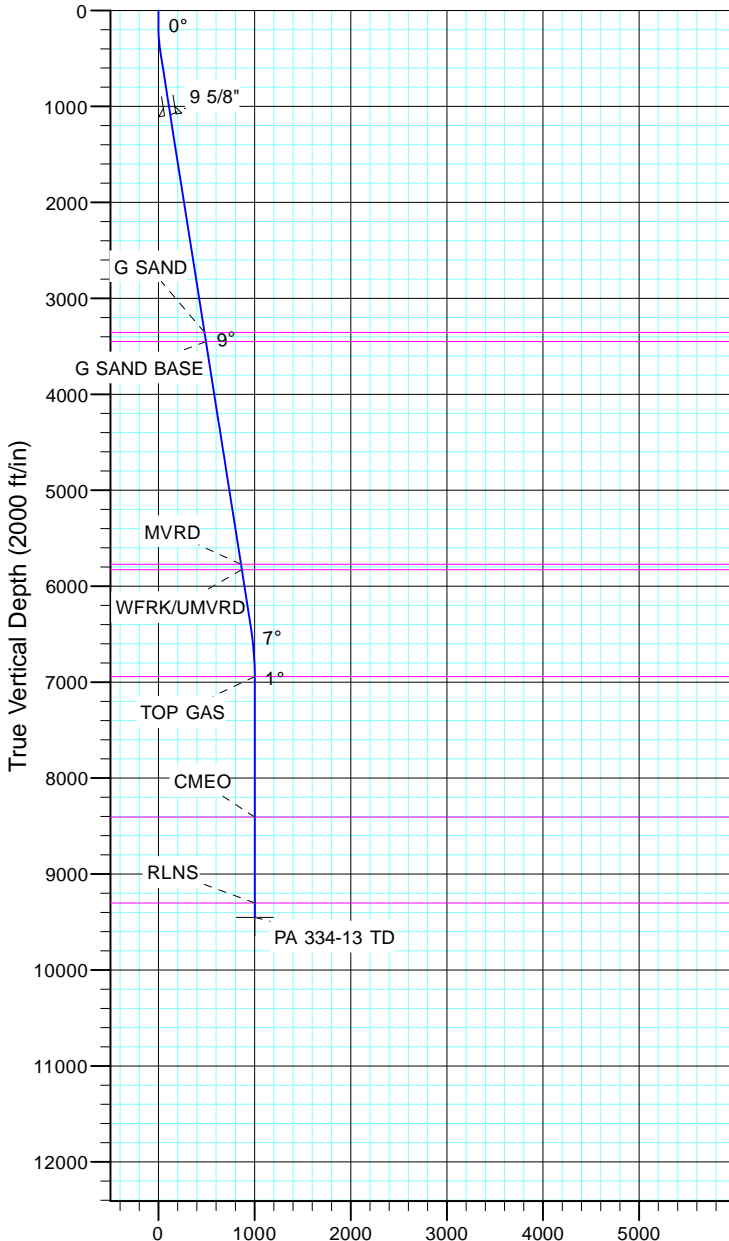


TEP Rocky Mountain LLC  
Project: Garfield County, CO NAD83  
Site: PA 44-13  
Well: PA 334-13  
Wellbore: OH  
Design: Plan #1



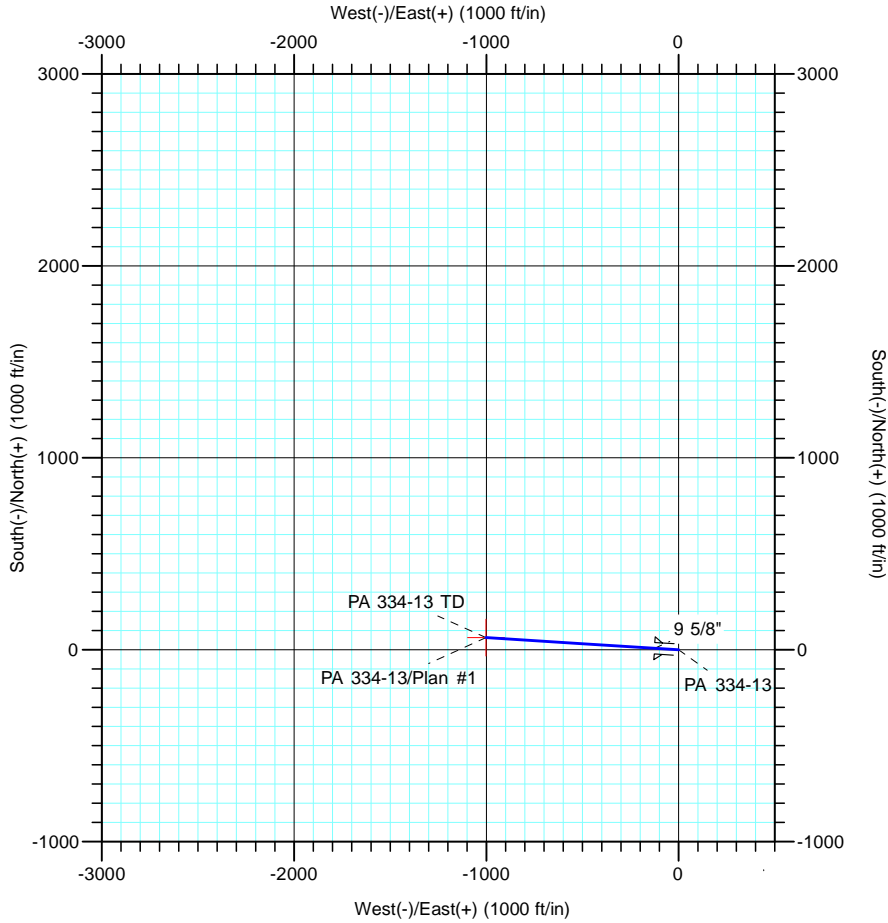
Azimuths to True North  
Magnetic North: 11.43°  
  
Magnetic Field  
Strength: 53064.3nT  
Dip Angle: 66.02°  
Date: 12/31/2004  
Model: IGRF2000



Vertical Section at 273.62° (2000 ft/in)

CASING DETAILS			
TVD	MD	Name	Size
1090.9	1100.0	9 5/8"	9.625

FORMATION TOP DETAILS		
TVDPath	MDPath	Formation
3357.0	3393.8	G SAND
3450.0	3488.0	G SAND BASE
5772.0	5838.4	MVRD
5828.0	5895.1	WFRK/UMVRD
6943.0	7019.5	TOP GAS
8407.0	8483.5	CMEO
9303.0	9379.5	RLNS



DESIGN TARGET DETAILS							
Name	TVD	+N/-S	+E/-W	Northing	Easting	Latitude	Longitude
PA 334-13 TD	9453.0	63.4	-1002.0	1623860.50	2310245.30	39° 31' 14.814 N	107° 56' 43.345 W

SECTION DETAILS										
Sec	MD	Inc	Azi	TVD	+N/-S	+E/-W	Dleg	TFace	VSec	Target
1	0.0	0.00	0.00	0.0	0.0	0.0	0.00	0.00	0.0	
2	150.0	0.00	0.00	150.0	0.0	0.0	0.00	0.00	0.0	
3	447.4	8.92	273.62	446.2	1.5	-23.1	3.00	273.62	23.1	
4	6474.8	8.92	273.62	6400.7	60.5	-955.9	0.00	0.00	957.8	
5	7069.5	0.00	0.00	6993.0	63.4	-1002.0	1.50	180.00	1004.0	
6	9529.5	0.00	0.00	9453.0	63.4	-1002.0	0.00	0.00	1004.0	PA 334-13 TD