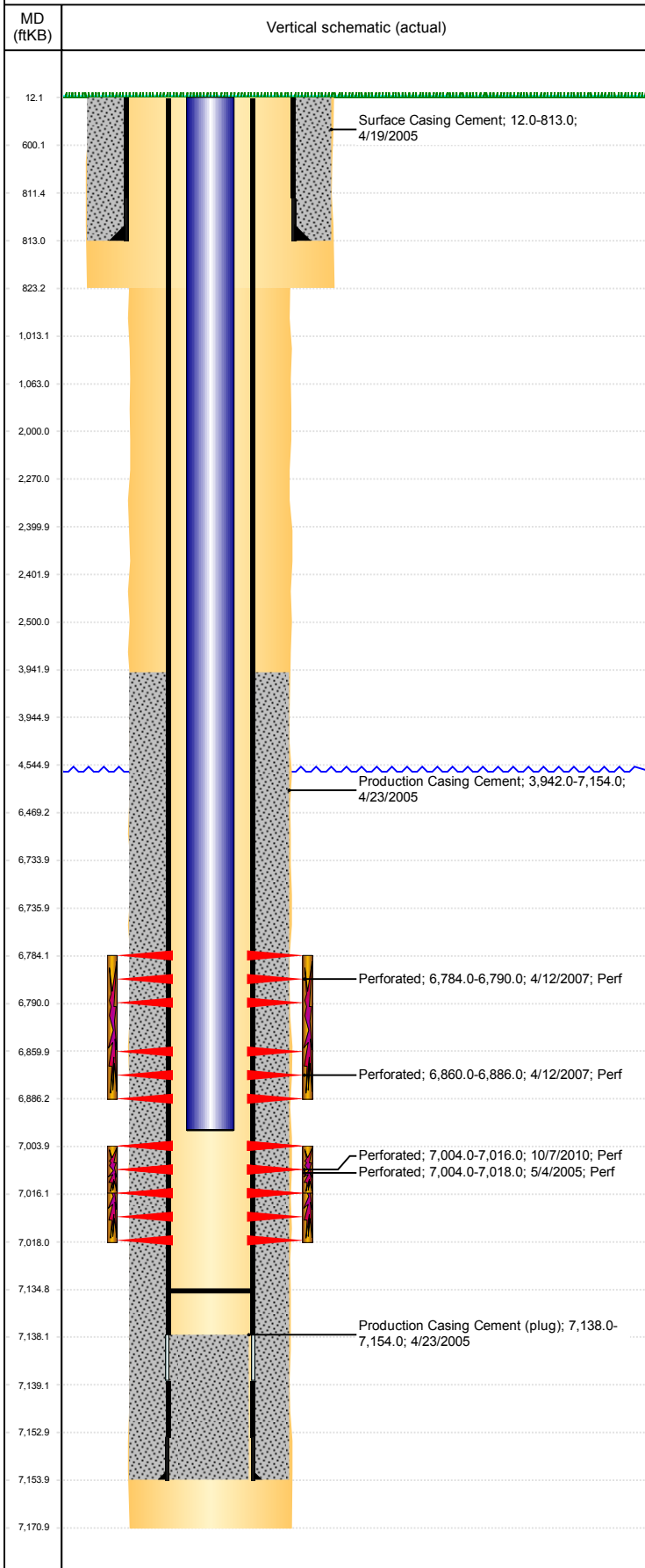


Well Name: GUTTERSEN 18-21

VERTICAL - ORIGINAL HOLE, 10/22/2018 2:27:04 PM



Well Header										
API 05-123-22886		Business Unit DJ BASIN			District 15		Well Config VERTICAL			
KB - GL / MSL (ft... 12.00		Spud Date 4/19/2005		P & A Date		Well Production Status SI			SoRT No	
Comment										
Surface Location (Congressional)										
Qtr 3 NE	Qtr 4 NW	Section 21	Twonshp 3	Twonsh... N	Range 64	Rng E/... W	Actual Latitude (°) 40.21467800		Actual Longitude (°) -104.56059300	
Wellbore Sections										
Section Des			Size (in)			Act Top, MD (ftKB)		Act Btm, MD (ftKB)		
SURFACE			12 1/4			12		823		
PRODUCTION			7 7/8			823		7,171		
Casing Strings										
Csg Des			Run Date		OD (in)	Wt/Len (lb/ft)	Grade	Top, MD (ftKB)	MD (ftKB)	
Surface			4/19/2005		8 5/8	24.00	J-55	12.0	813.0	
Production			4/22/2005		4 1/2	11.60	I-80	12.0	7,154.0	
Cement										
Des					Start Date		Top (ftKB)		Btm (ftKB)	
Surface Casing Cement					4/19/2005		12.0		813.0	
Production Casing Cement					4/23/2005		3,942.0		7,154.0	
Zone Statuses										
Zone Name		Status Date	Status	Fluid Type	Job				Prod Method	
NIOBRARA		12/1/2013	PR	Water	RE-FRAC, 9/3/2010 00:00				Flowing	
NIOBRARA		5/9/2017	SI							
CODELL		9/27/2010	PR							
CODELL		12/1/2013	PR	Water					Flowing	
Perforation Data										
Linked Zone			Bnch/Stg	Entered Shot Total	Top (ftKB)		Btm (ftKB)		Date	
NIOBRARA, ORIGINAL HOLE			B	24	6,784.00		6,790.00		4/12/2007	
NIOBRARA, ORIGINAL HOLE			C	52	6,860.00		6,886.00		4/12/2007	
CODELL, ORIGINAL HOLE				56	7,004.00		7,018.00		5/4/2005	
CODELL, ORIGINAL HOLE				24	7,004.00		7,016.00		10/7/2010	
Stimulation Intervals										
Zone				Start Date		Top (ftKB)		Btm (ftKB)		
NIOBRARA, ORIGINAL HOLE				4/18/2007		6,784.0		6,886.0		
CODELL, ORIGINAL HOLE				5/5/2005		7,004.0		7,018.0		
CODELL, ORIGINAL HOLE				9/15/2010		7,004.0		7,016.0		
Other In Hole										
Run Date		Des				OD (in)	Top (ftKB)		Btm (ftKB)	
Logs										
Date		Type					Top, MD (ftKB)		Btm, MD (ftKB)	
4/23/2005		COMPENSATED DENSITY					4,050.0		7,145.0	
4/23/2005		INDUCTION					813.0		7,165.0	
5/4/2005		CBL/CCL/GR					3,750.0		7,130.0	
5/4/2005		COLLAR LOCATOR					6,900.0		7,020.0	
9/7/2010		PERFORATION					6,620.0		6,750.0	
10/4/2012		GYRO					0.0		6,700.0	
Plug Back Total Depths										
Date		Type			Com				Depth (ftKB)	
5/12/2005		FILL			CLEAN OUT				7,131.0	
5/28/2009		PLUG REMNANTS			DRILL CIBP AND CLEAN OUT TO 7135'				7,135.0	