



September 16, 2018

Ms. Julie Murphy, Director
Colorado Oil & Gas Conservation Commission
1120 Lincoln Street, Ste. 801
Denver, Colorado 80203

RE: Rule 318.A.e.
Interchange B N35-20-10N

Surface Location: NESW, Section 10, Township 1 South, Range 68 West, Broomfield County, CO

Dear Ms. Murphy,

Extraction Oil and Gas is planning to drill the captioned horizontal wells in accordance with the provision of COGCC Rule 318A.e.

The proposed wellbore spacing unit consists of:

Section 34-1N-68W: E/2E/2
Section 35-1N-68W: W/2W/2
Section 3-1S-68W: E/2E/2
Section 10-1S-68W: NENE

The spacing unit is a 520-acre wellbore spacing unit for the Niobrara formation.

Extraction Oil and Gas hereby certifies to the Director that all Owners within the proposed spacing unit above were notified and 30 days have passed without objection.

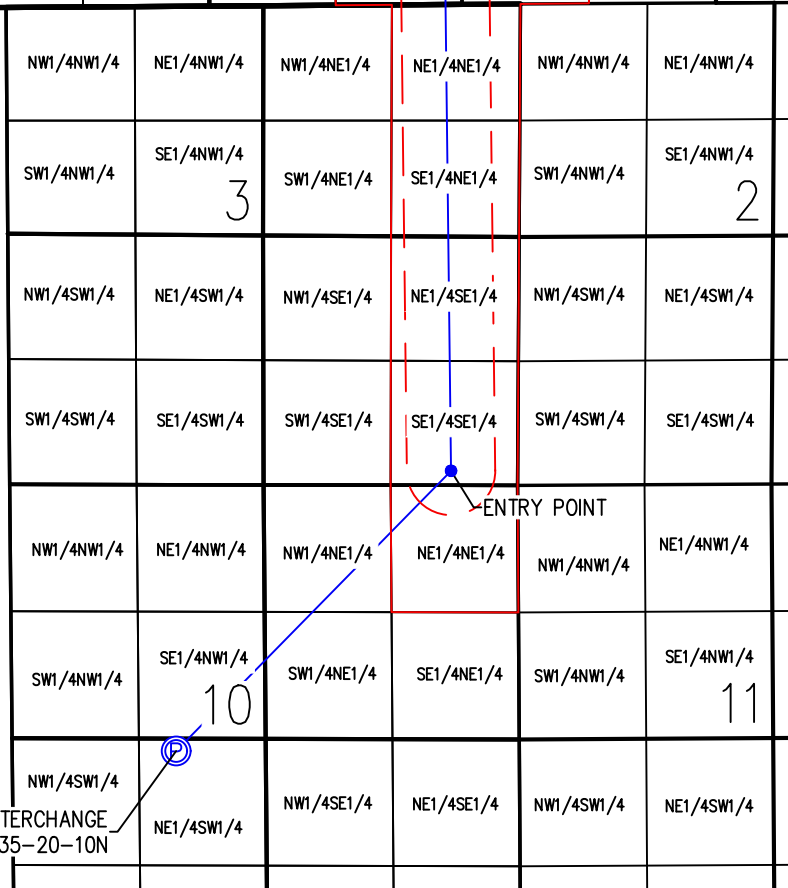
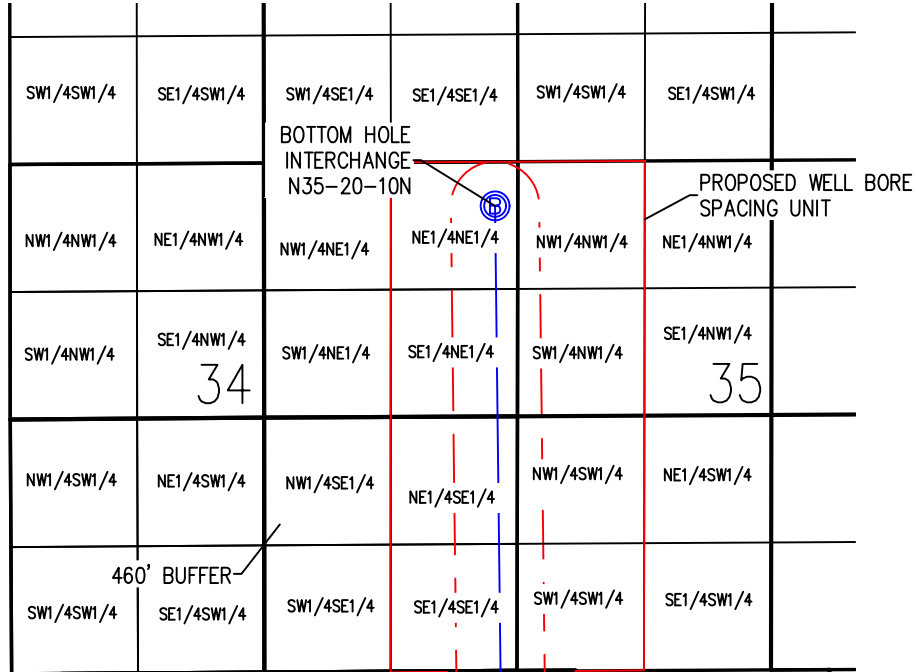
If you have any questions or issues regarding this permit, please contact Alyssa Andrews at (720) 481-2379.

Sincerely,

Alyssa Andrews
Regulatory Analyst
Extraction Oil & Gas, Inc.

WELL BORE DIAGRAM INTERCHANGE A&B PAD

INTERCHANGE B N35-20-10N



INTERCHANGE N35-20-10N

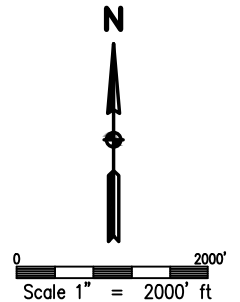
SURFACE LOCATION
LATITUDE = 39.979022°
LONGITUDE = -104.991093°

ENTRY POINT LOCATION
LATITUDE = 39.986984°
LONGITUDE = -104.980821°

BOTTOM HOLE LOCATION
LATITUDE = 40.013627°
LONGITUDE = -104.981024°

NOTES:

- 1) THIS SKETCH DOES NOT REPRESENT A BOUNDARY SURVEY.
- 2) THE DATUM FOR THE LATITUDES AND LONGITUDES ON THIS SKETCH IS NAD83.



LEGEND

- P - PROPOSED WELL HEAD
- B - PROPOSED BOTTOM HOLE
- - ENTRY POINT



DRAWN BY RPM	CHECKED BY AAD
INITIAL SUBMITTAL 12/20/2017	REVISED N/A
DRAWING SIZE 8.5" X 11"	JOB NO. EXT01S8BW10-03
SHEET 1	OF 1

