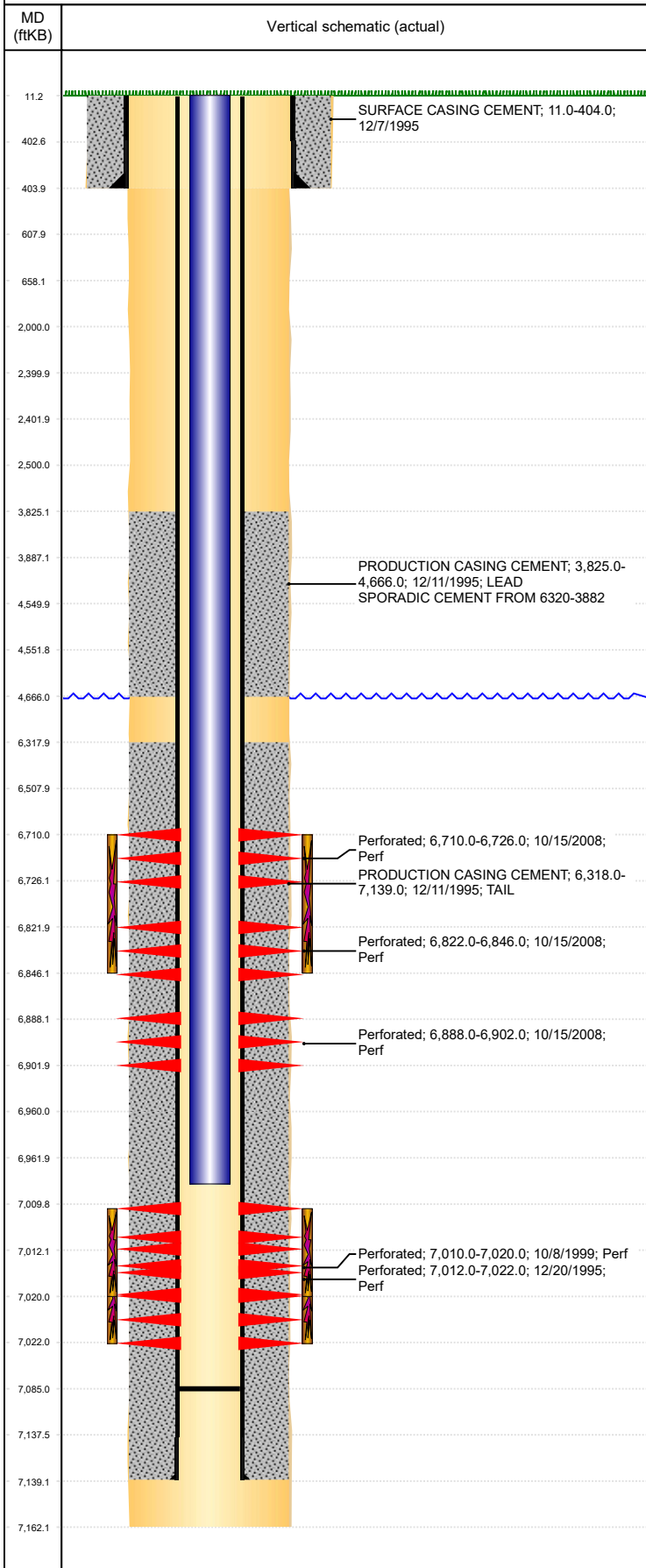


Well Name: STATE CLARK 36-21

VERTICAL - ORIGINAL HOLE, 10/23/2018 8:26:06 AM



Well Header									
API 05-123-19008		Business Unit DJ BASIN			District 15		Well Config VERTICAL		
KB - GL / MSL (ft... 11.00		Spud Date 12/7/1995		P & A Date		Well Production Status SI			SoRT No
Comment PER FRAC POST JOB RPTS ONLY NIOB A & B BENCHES FRAC'D. FIELD OPS NOTICE- FLOWLINES ABANDONED, RCVD 6/28/17. STATE SHOWS SHUT IN SINCE OCT 2016.									
Surface Location (Congressional)									
Qtr 3 NE	Qtr 4 NW	Section 36	Twnshp 5	Twnsh... N	Range 65	Rng E/... W	Actual Latitude (°) 40.36070000	Actual Longitude (°) -104.61418000	
Wellbore Sections									
Section Des		Size (in)			Act Top, MD (ftKB)		Act Btm, MD (ftKB)		
SURFACE		12 1/4			11		404		
PRODUCTION		7 7/8			404		7,162		
Casing Strings									
Csg Des		Run Date		OD (in)	Wt/Len (lb/ft)	Grade	Top, MD (ftKB)	MD (ftKB)	
Surface		12/7/1995		8 5/8	24.00	J-55	11.0	404.0	
Production		12/11/1995		3 1/2	7.70	KS-07	11.0	7,139.0	
Cement									
Des				Start Date		Top (ftKB)		Btm (ftKB)	
SURFACE CASING CEMENT				12/7/1995		11.0		404.0	
PRODUCTION CASING CEMENT				12/11/1995		3,825.0		4,666.0	
PRODUCTION CASING CEMENT				12/11/1995		6,318.0		7,139.0	
Zone Statuses									
Zone Name	Status Date	Status	Fluid Type	Job			Prod Method		
CODELL	6/21/2010	PR	Water	COMMINGLE ZONES, 9/30/2009 00:00			Flowing		
CODELL	11/29/2016	SI							
NIOBRARA	10/8/2009	PR					Flowing		
NIOBRARA	6/21/2010	PR	Water				Flowing		
Perforation Data									
Linked Zone		Bnch/Stg	Entered Shot Total	Top (ftKB)		Btm (ftKB)		Date	
NIOBRARA, ORIGINAL HOLE		A	32	6,710.00		6,726.00		10/15/2008	
NIOBRARA, ORIGINAL HOLE		B	96	6,822.00		6,846.00		10/15/2008	
NIOBRARA, ORIGINAL HOLE		C	56	6,888.00		6,902.00		10/15/2008	
CODELL, ORIGINAL HOLE			40	7,010.00		7,020.00		10/8/1999	
CODELL, ORIGINAL HOLE			40	7,012.00		7,022.00		12/20/1995	
Stimulation Intervals									
Zone			Start Date		Top (ftKB)		Btm (ftKB)		
			10/16/2008		6,710.0		6,846.0		
CODELL, ORIGINAL HOLE			10/12/1999		7,010.0		7,020.0		
CODELL, ORIGINAL HOLE			12/21/1995		7,012.0		7,022.0		
Other In Hole									
Run Date		Des			OD (in)	Top (ftKB)		Btm (ftKB)	
Logs									
Date		Type				Top, MD (ftKB)		Btm, MD (ftKB)	
12/11/1995		COMPENSATED DENSITY				404.0		7,163.0	
12/11/1995		INDUCTION				404.0		7,163.0	
12/15/1995		CEMENT BOND				3,650.0		7,058.0	
8/31/2011		GYRO				11.0		6,750.0	
Plug Back Total Depths									
Date		Type		Com				Depth (ftKB)	
10/14/1999		FILL		CLEAN OUT TO LAND TBG				7,090.0	
10/5/2009		PLUG REMNANTS		DRILL OUT CMT & PLUG & CHASE TO 7085', ROLL CLEAN				7,085.0	