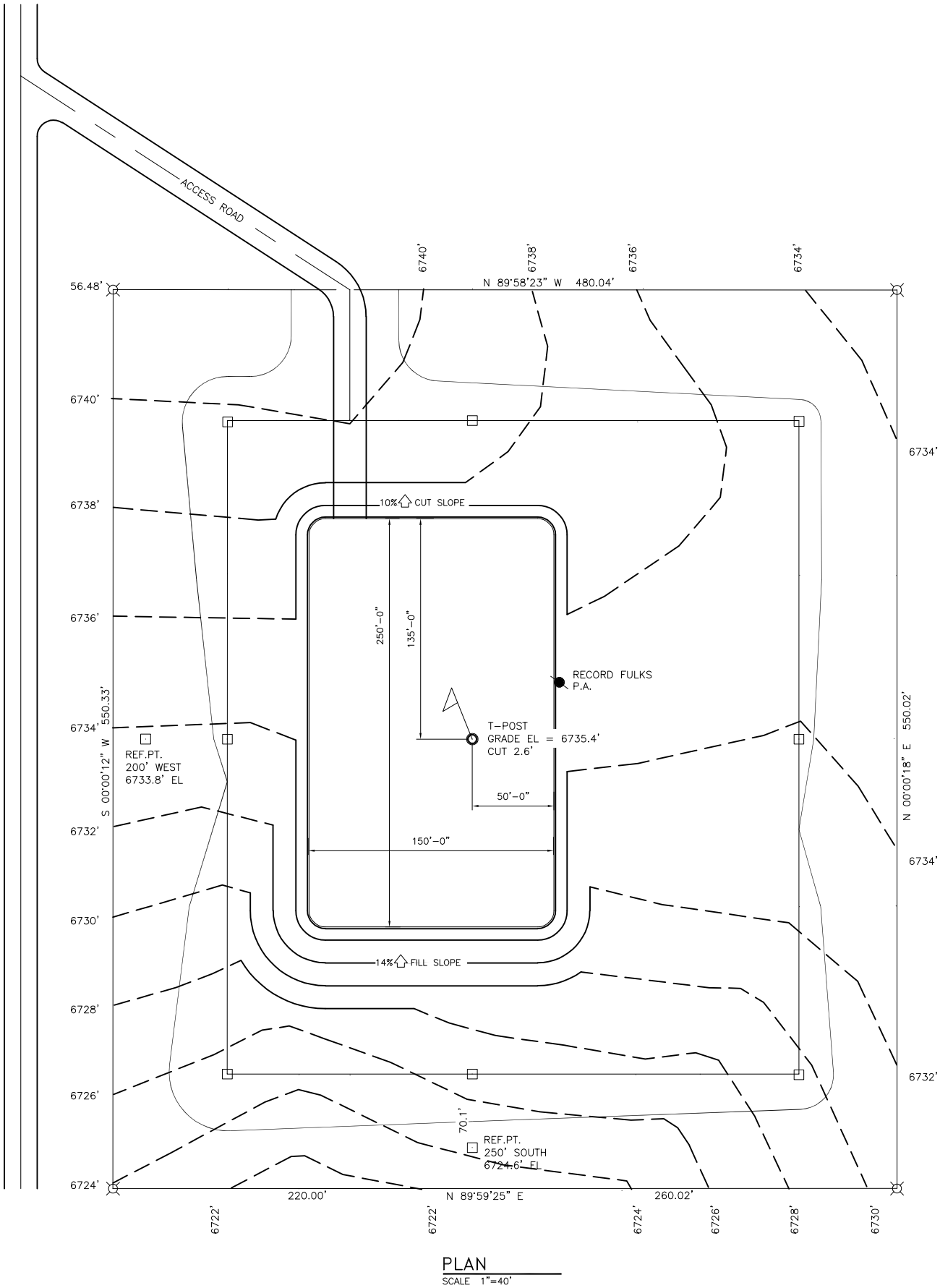


- LEGEND
- T-POST LOCATION
  - LATH/PIN FLAG
  - U-POST/LATH
  - RIG ANCHOR
  - 6" SLIDE VALVE
  - CULVERTS
  - DIVERSION DITCH



PLAN

SCALE 1"=40'

NOTES:

INFORMATION BASED ON A SURVEY OR SURVEYS ON THE GROUND PROVIDED BY:  
HUDDLESTON LAND SURVEYING  
P.O. BOX KK - CORTEZ, CO. 81321  
(970) 565-3330

REVISIONS				
△				
△				
△				
△				
△				
△				
△	ISSUED FOR PERMIT	8/30/18	GEG	

**KINDER MORGAN**  
CO<sub>2</sub> COMPANY, L.P.

17801 HWY. 491  
CORTEZ, CO 81321

SITE LOCATION:

CO2 WELL PAD SITE PLAN GOODMAN POINT GP-29 WELL PAD INTERIM RECLAMATION PLAN		
SOUTH GATHERING FACILITIES		MONTEZUMA COUNTY, COLORADO
DRAWN BY: GEG	8/30/18	REVIEWED BY:
CHECKED BY: CM		APPROVED BY:
SCALE: AS-NOTED		DRAWING NUMBER
		WP-GP-29-PERM-004

Aug 31, 2018 - 1:24pm by gummie1 - Path = T:\CO2 S&T CAD Vault\Projects CADworx\McElmo Dome Facilities\South Gathering\SG Gathering\Civil\WP-GP-29-PERM-001-004 well pad.dwg