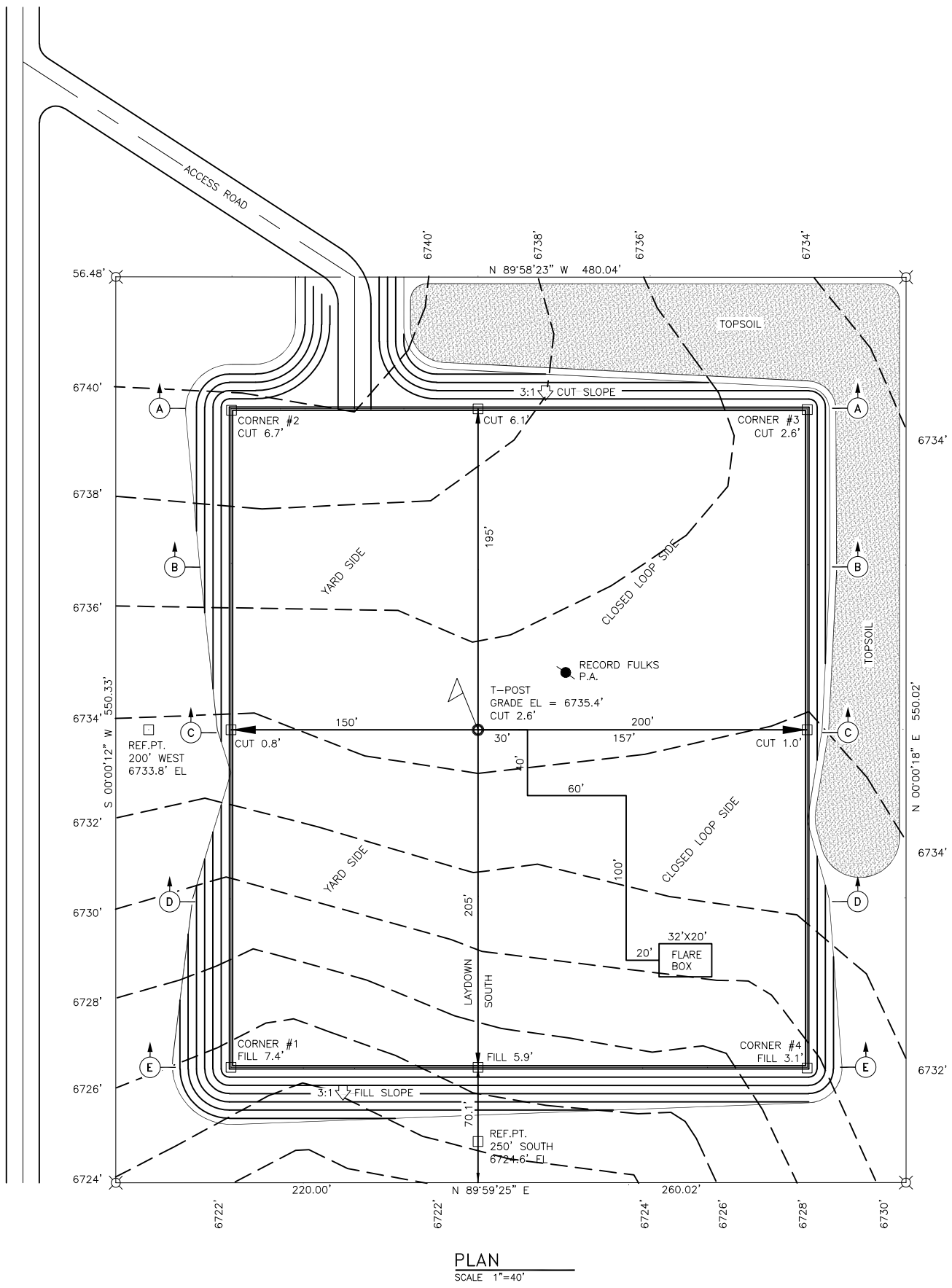


- LEGEND**
- T-POST LOCATION
 - LATH/PIN FLAG
 - U-POST/LATH
 - RIG ANCHOR
 - 6" SLIDE VALVE
 - CULVERTS
 - DIVERSION DITCH



APPROXIMATE DIRT QUANTITIES:
 CUT = 10,545 CYS.
 FILL = 6,474 CYS.
 EXCESS = 4071 CYS. (3254 CYS. TOP SOIL)
 817 CYS. OVER
 LIMITS OF DISTURBANCE - 6.06 ACRES
 PAD & SLOPES - 4.04 ACRES

PLAN
 SCALE 1"=40'

NOTES:

INFORMATION BASED ON A SURVEY OR SURVEYS ON THE GROUND PROVIDED BY:
 HUDDLESTON LAND SURVEYING
 P.O. BOX KK - CORTEZ, CO. 81321
 (970) 565-3330

REVISIONS			
△			
△			
△			
△			
△			
△	ISSUED FOR PERMIT	8/30/18	GEG

KINDER MORGAN
 CO₂ COMPANY, L.P.

17801 HWY. 481
 CORTEZ, CO. 81321
 SITE LOCATION:

CO₂ WELL PAD SITE PLAN
GOODMAN POINT GP-29 WELL PAD
EXISTING AND DESIGN CONTOURS

SOUTH GATHERING FACILITIES
 MONTEZUMA COUNTY, COLORADO

DRAWN BY: GEG	8/30/18	REVIEWED BY:	SCALE: AS-NOTED
CHECKED BY: CM		APPROVED BY:	DRAWING NUMBER WP-GP-29-PERM-001

Aug 31, 2018 - 1:25pm by gummie1 - Path = T:\CO2 S&T CAD Vault\Projects\CADworkx\McElmo Dome Facilities\South Gathering\SC_Gathering\Civil\WP-GP-29-PERM-001-004_well_pad.dwg