



**PHOTO: VIEW OF REFERENCE AREA**

**CAMERA ANGLE: NORTHERLY**



**PHOTO: VIEW OF REFERENCE AREA**

**CAMERA ANGLE: EASTERLY**

## **HIGHPOINT OPERATING CORPORATION**

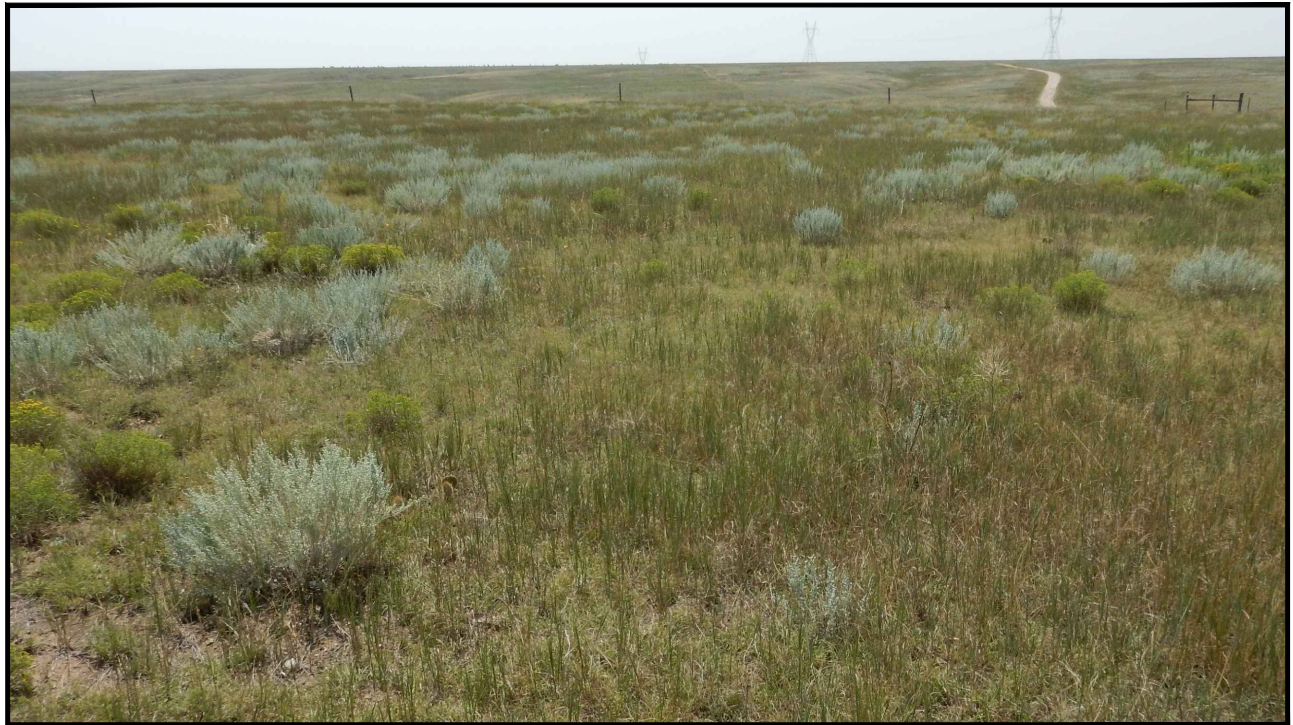
**FOX CREEK 34 NW PAD  
NW 1/4 NW 1/4, SECTION 34, T12N, R63W, 6th P.M.  
WELD COUNTY, COLORADO**



**UELS, LLC**  
Corporate Office \* 85 South 200 East  
Vernal, UT 84078 \* (435) 789-1017

<b>TAKEN BY</b>	M.M., J.B.	08-16-18	
<b>DRAWN BY</b>	L.K.	09-10-18	
<b>REFERENCE AREA PHOTOS</b>			<b>REF 1</b>





**PHOTO: VIEW OF REFERENCE AREA**

**CAMERA ANGLE: SOUTHERLY**



**PHOTO: VIEW OF REFERENCE AREA**

**CAMERA ANGLE: WESTERLY**

## **HIGHPOINT OPERATING CORPORATION**

**FOX CREEK 34 NW PAD  
NW 1/4 NW 1/4, SECTION 34, T12N, R63W, 6th P.M.  
WELD COUNTY, COLORADO**



**UELS, LLC**  
Corporate Office \* 85 South 200 East  
Vernal, UT 84078 \* (435) 789-1017

<b>TAKEN BY</b>	M.M., J.B.	08-16-18	
<b>DRAWN BY</b>	L.K.	09-10-18	
<b>REFERENCE AREA PHOTOS</b>			<b>REF 2</b>