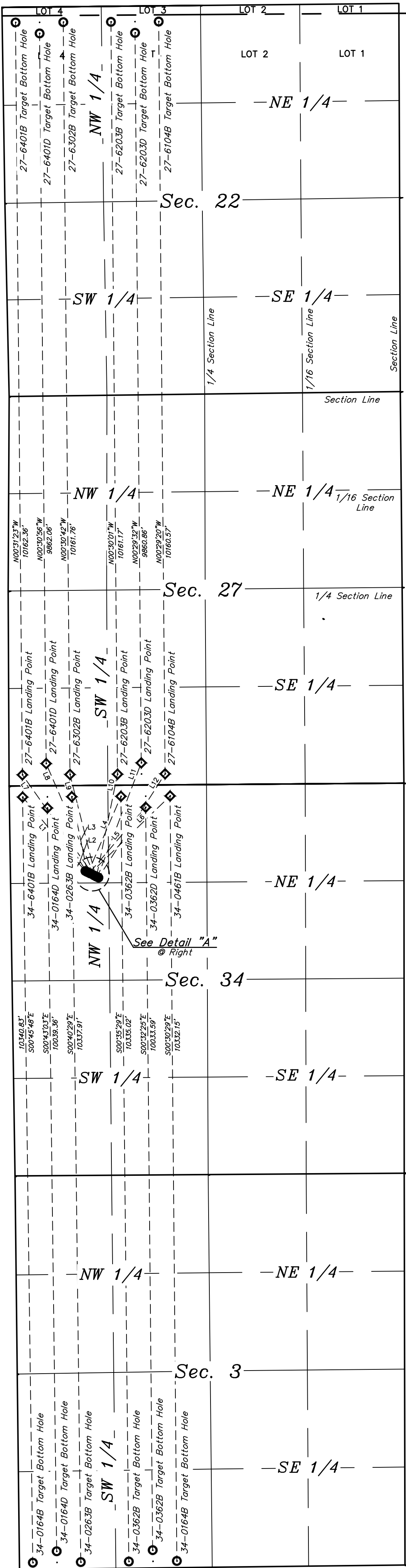




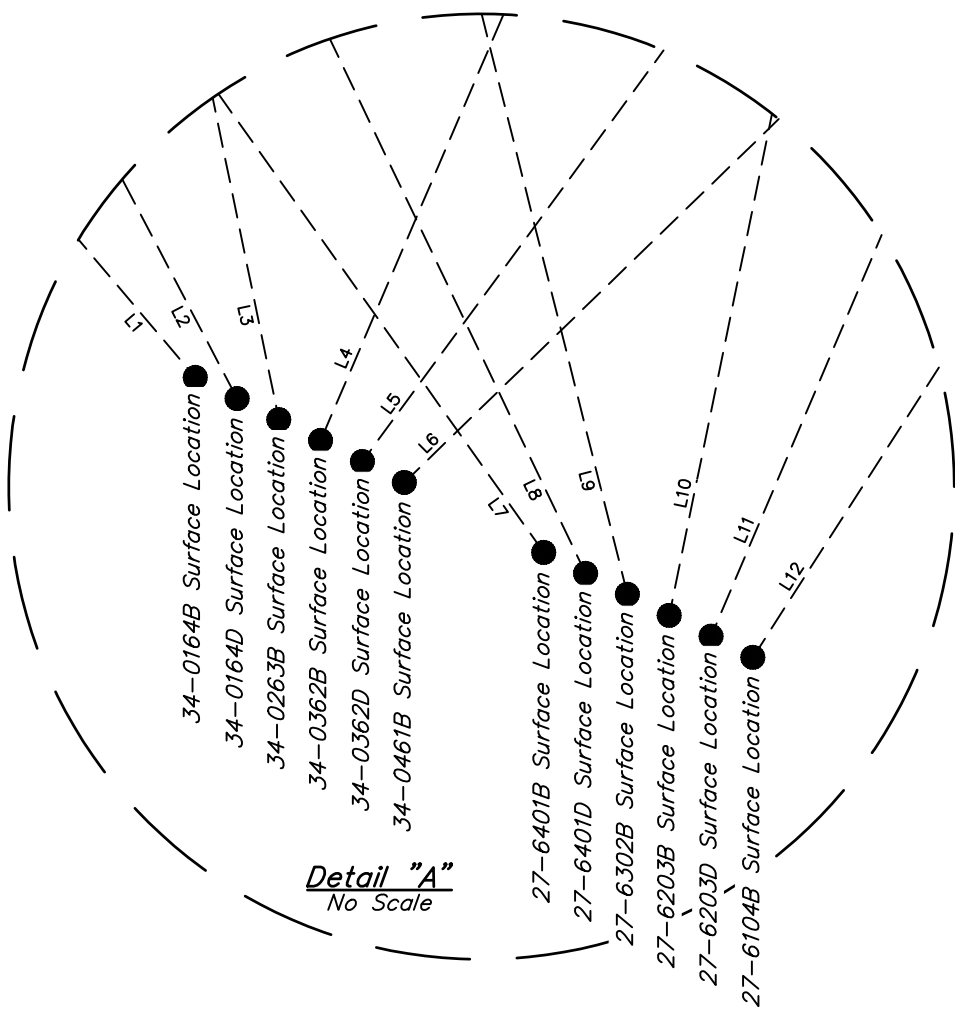
Wyoming State Line  
Colorado



WELL	SHL FOOTAGES	SECTION	TOWNSHIP	RANGE
34-0164B	1155' FNL 1101' FWL	34	12N	63W
34-0164D	1162' FNL 1024' FWL	34	12N	63W
34-0263B	1168' FNL 1038' FWL	34	12N	63W
34-0362B	1175' FNL 1051' FWL	34	12N	63W
34-0362D	1182' FNL 1064' FWL	34	12N	63W
34-0461B	1189' FNL 1189' FWL	34	12N	63W
27-6401B	1212' FNL 1122' FWL	34	12N	63W
27-6401D	1218' FNL 1135' FWL	34	12N	63W
27-6302B	1225' FNL 1149' FWL	34	12N	63W
27-6203B	1232' FNL 1162' FWL	34	12N	63W
27-6203D	1239' FNL 1175' FWL	34	12N	63W
27-6104B	1246' FNL 1188' FWL	34	12N	63W

WELL	LP FOOTAGES	SECTION	TOWNSHIP	RANGE
34-0164B	150' FNL 180' FWL	34	12N	63W
34-0164D	300' FNL 512' FWL	34	12N	63W
34-0263B	150' FNL 844' FWL	34	12N	63W
34-0362B	150' FNL 1508' FWL	34	12N	63W
34-0362D	300' FNL 1840' FWL	34	12N	63W
34-0461B	150' FNL 2378' FWL	34	12N	63W
27-6401B	150' FSL 180' FWL	27	12N	63W
27-6401D	300' FSL 502' FWL	27	12N	63W
27-6302B	150' FSL 8230' FWL	27	12N	63W
27-6203B	150' FSL 1739' FWL	27	12N	63W
27-6203D	300' FSL 2060' FWL	27	12N	63W
27-6104B	150' FSL 2108' FWL	27	12N	63W

WELL	BHL FOOTAGES	SECTION	TOWNSHIP	RANGE
34-0164B	90' FSL 180' FWL	3	11N	63W
34-0164D	240' FSL 504' FWL	3	11N	63W
34-0263B	90' FSL 828' FWL	3	11N	63W
34-0362B	90' FSL 1477' FWL	3	11N	63W
34-0362D	240' FSL 1801' FWL	3	11N	63W
34-0461B	90' FSL 2126' FWL	3	11N	63W
27-6401B	205' FNL 180' FWL	22	12N	63W
27-6401D	356' FNL 503' FWL	22	12N	63W
27-6302B	207' FNL 825' FWL	22	12N	63W
27-6203B	209' FNL 1469' FWL	22	12N	63W
27-6203D	360' FNL 1792' FWL	22	12N	63W
27-6104B	212' FNL 2114' FWL	22	12N	63W



LINE TABLE		
LINE	DIRECTION	LENGTH
L1	N40°17'21"W	1308.88'
L4	N23°13'54"E	1119.18'
L5	N40°39'23"E	1170.06'
L6	N45°51'27"E	1503.07'
L7	N35°21'29"W	1660.82'
L8	N23°20'41"W	1648.53'
L9	N14°06'18"W	1415.32'
L10	N11°34'53"E	1412.93'
L11	N20°58'18"E	1652.69'
L12	N32°41'11"E	1666.23'

LEGEND:  
● = PROPOSED WELLHEAD.  
○ = LANDING POINT.  
○ = TARGET BOTTOM HOLE.

NOTES:

HIGHPOINT OPERATING CORPORATION

FOX CREEK 34 NW PAD  
NW 1/4 NW 1/4, SECTION 34, T12N, R63W, 6th P.M.  
WELD COUNTY, COLORADO

SURVEYED BY	MATTHEW MILLER, J.B.	08-16-18	SCALE
DRAWN BY	J.U.	08-22-18	1" = 1000'
MULTI-Well PLAN		FIGURE #5	



UELS, LLC  
Corporate Office \* 85 South 200 East  
Vernal, UT 84078 \* (435) 789-1017