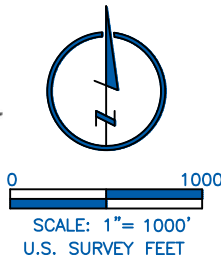
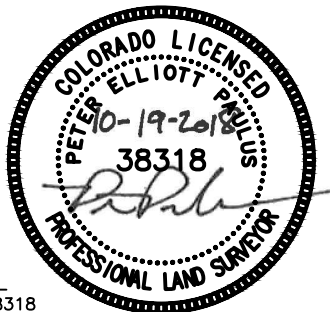


### LAND SURVEYOR'S CERTIFICATION

LAMP, RYNEARSON & ASSOCIATES, INC., OF FT. COLLINS, COLORADO HAS, IN ACCORDANCE WITH A REQUEST FROM RYAN BRUNER, AXIS EXPLORATION, DETERMINED THE SURFACE LOCATION OF THE WELL DESIGNATED AS JAMASO 4-65 5-6-4 TO BE 2450' FROM THE NORTH LINE AND 1053' FROM THE WEST LINE OF SECTION 4, TOWNSHIP 4 SOUTH, RANGE 65 WEST OF THE 6TH P.M., ARAPAHOE COUNTY, COLORADO.



PETER ELLIOTT PAULUS COLORADO PLS 38318  
 DATE OF SURVEY: 01/09/2018 (SECTION CONTROL)  
 DATE OF SURVEY: 10/12/2018 (WELL LOCATION)

### NOTES:

- DISTANCES ARE MEASURED PERPENDICULAR TO NEAREST SECTION LINE AND ARE SHOWN ON THE SAME SIDE OF THE SECTION LINE WHERE THE WELL IS LOCATED.
- THIS MAP DOES NOT REPRESENT A MONUMENTED BOUNDARY SURVEY. SIXTEENTH CORNER LOCATIONS ARE COMPUTED, UNLESS OTHERWISE NOTED.
- BOTTOM HOLE LOCATIONS AND HORIZONTAL COMPLETION ZONE PROVIDED BY OTHERS.
- ALL REBAR AND CAPS ARE MEASURED IN INCHES

### BASIS OF BEARING:

THE WEST LINE OF THE SOUTHWEST QUARTER OF SECTION 4-T4S-R65W BEARS N00°22'38"W FOR 2647.43 FT BETWEEN THE SOUTHWEST CORNER OF SECTION 4 MONUMENTED WITH 2 1/2" A.C. IN R.B. STAMPED "PLS 29430" AND THE WEST QUARTER CORNER OF SECTION 4 MONUMENTED WITH 3 1/4" A.C. IN R.B. STAMPED "LS 34178" BASED ON THE COLORADO CENTRAL 0502 STATE PLANE COORDINATE SYSTEM.

ELEVATIONS ARE BASED ON NAVD 88, AS OBSERVED FROM GPS OBSERVATIONS



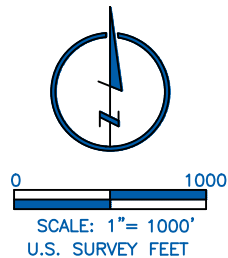
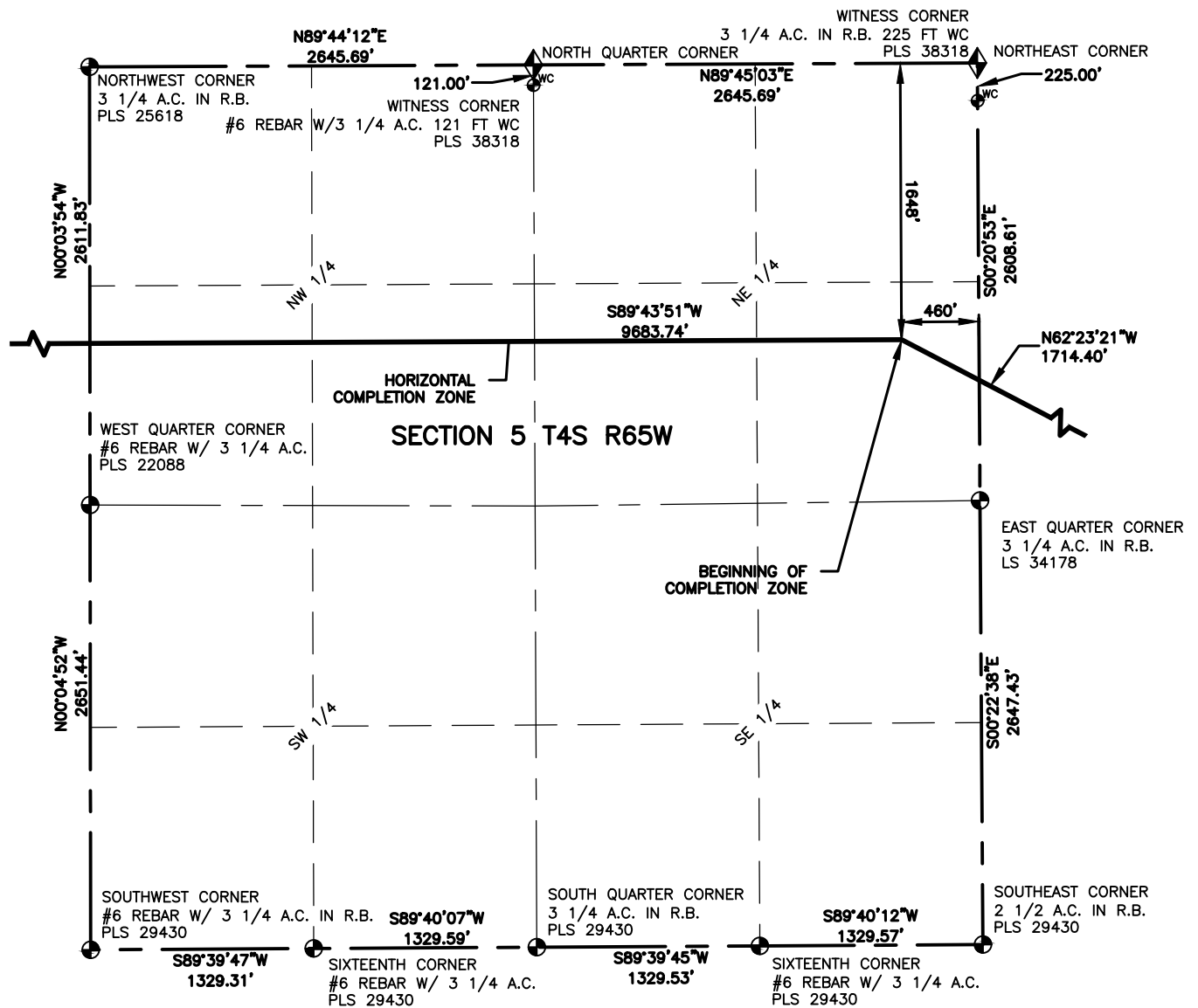
**LAMP RYNEARSON**  
 & ASSOCIATES

4715 Innovation Drive 970.226.0342 | P  
 Fort Collins, CO 80525 970.226.0879 | F  
 www.LRA-inc.com

PROPOSED WELL LOCATION EXHIBIT  
 JAMASO 4-65 5-6-4  
 1 OF 3

DRAWN BY: CPP DATE: 10/12/18 COGCC ID: 0218003.03 PROJECT - TASK NUMBER: 0218003.03 BOOK AND PAGE: SURFACE - LOCATION  
 PATH/FILENAME: L:\Engineering\0218003.03 XOG - Jamaso\SURVEY\DRAWINGS\EXHIBITS\0218003.03 WP-C1.dwg

SURFACE - LOCATION  
 SW/4 NW/4 SEC 4 T4S R65W,  
 CITY OF AURORA



PROPOSED WELL LOCATION EXHIBIT  
JAMASO 4-65 5-6-4  
2 OF 3



**LAMP RYNEARSON & ASSOCIATES**

4715 Innovation Drive 970.226.0342 | P  
Fort Collins, CO 80525 970.226.0879 | F  
www.LRA-inc.com

**DRAWN BY**  
CPP

**DATE**  
10/12/18

**COGCC ID**

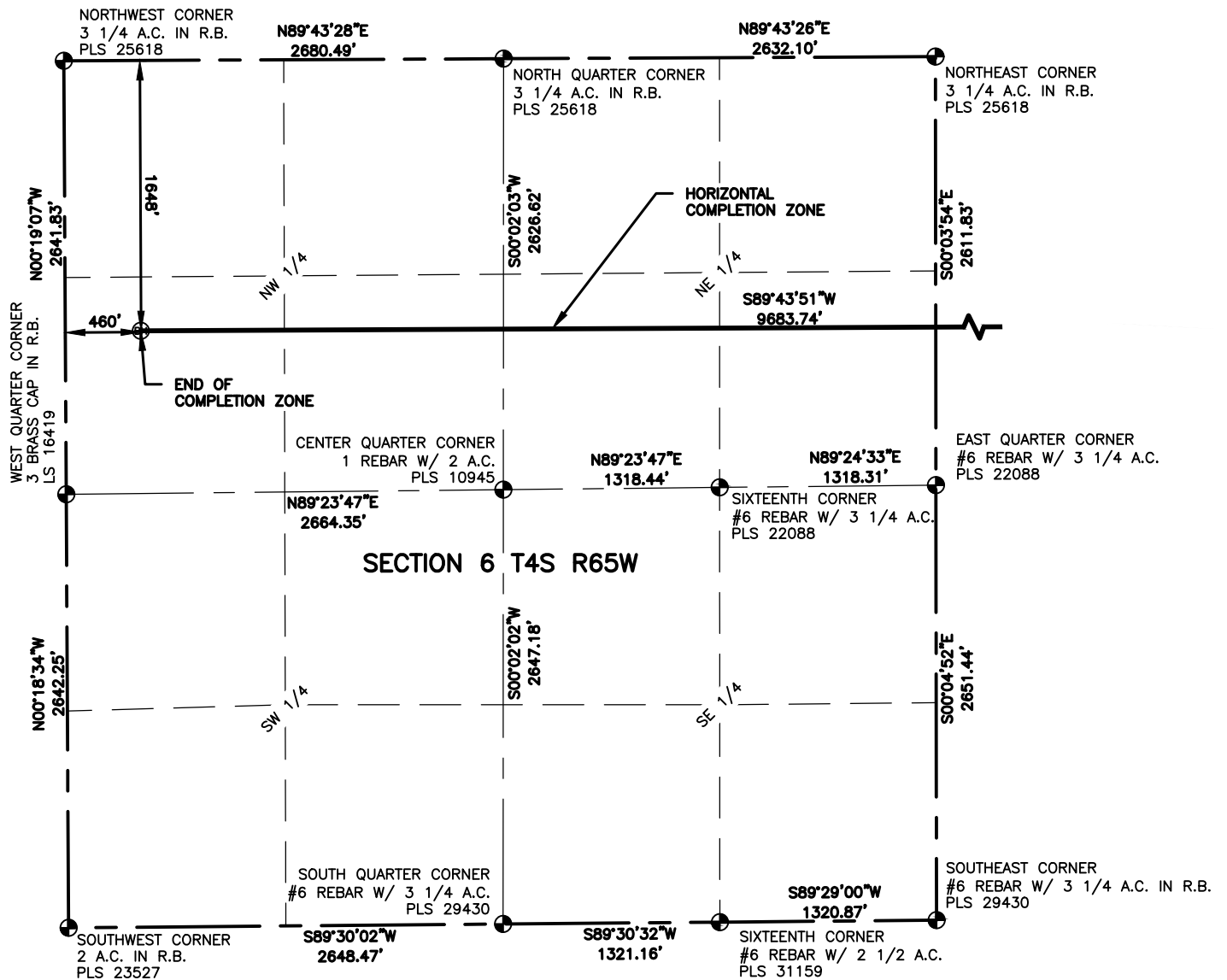
**PROJECT - TASK NUMBER**  
0218003.03

**BOOK AND PAGE**

**SURFACE - LOCATION**

SW/4 NW/4 SEC 4 T4S R65W,  
CITY OF AURORA

**PATH/FILENAME** L:\Engineering\0218003.03 XOG - Jamaso\SURVEY\DRAWINGS\EXHIBITS\0218003.03 WP-C2.dwg

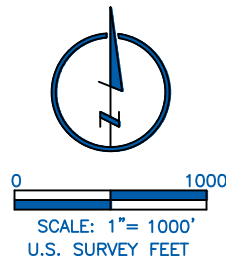


### LEGEND

- ⊙ ALIQUOT CORNER
- ⊙ PROPOSED WELL
- ⬠ COMPUTED ALIQUOT CORNER
- A.C. ALUMINUM CAP
- R.B. RANGE BOX
- ⊙ BOTTOM HOLE
- CON. CONCRETE

### NOTES:

- DISTANCES ARE MEASURED PERPENDICULAR TO NEAREST SECTION LINE AND ARE SHOWN ON THE SAME SIDE OF THE SECTION LINE WHERE THE WELL IS LOCATED.
- THIS MAP DOES NOT REPRESENT A MONUMENTED BOUNDARY SURVEY. SIXTEENTH CORNER LOCATIONS ARE COMPUTED, UNLESS OTHERWISE NOTED.
- BOTTOM HOLE LOCATIONS AND HORIZONTAL COMPLETION ZONE PROVIDED BY OTHERS.
- ALL REBAR AND CAPS ARE MEASURED IN INCHES.



**LAMP RYNEARSON**  
& ASSOCIATES

4715 Innovation Drive 970.226.0342 | P  
Fort Collins, CO 80525 970.226.0879 | F  
www.LRA-inc.com

PROPOSED WELL LOCATION EXHIBIT  
JAMASO 4-65 5-6-4  
3 OF 3

DRAWN BY

DATE

COGCC ID

PROJECT - TASK NUMBER

BOOK AND PAGE

SURFACE - LOCATION

PATH/FILENAME

L:\Engineering\0218003.03 XOG - Jamaso\SURVEY\DRAWINGS\EXHIBITS\0218003.03 WP-C3.dwg

SW/4 NW/4 SEC 4 T4S R65W,  
CITY OF AURORA