

T5S, R96W, 6th P.M.

Caerus Oil & Gas LLC

(AS-DRILLED) NPR 12B-10 596
NE 1/4 SW 1/4, SECTION 10, T5S, R96W, 6th P.M.
GARFIELD COUNTY, COLORADO

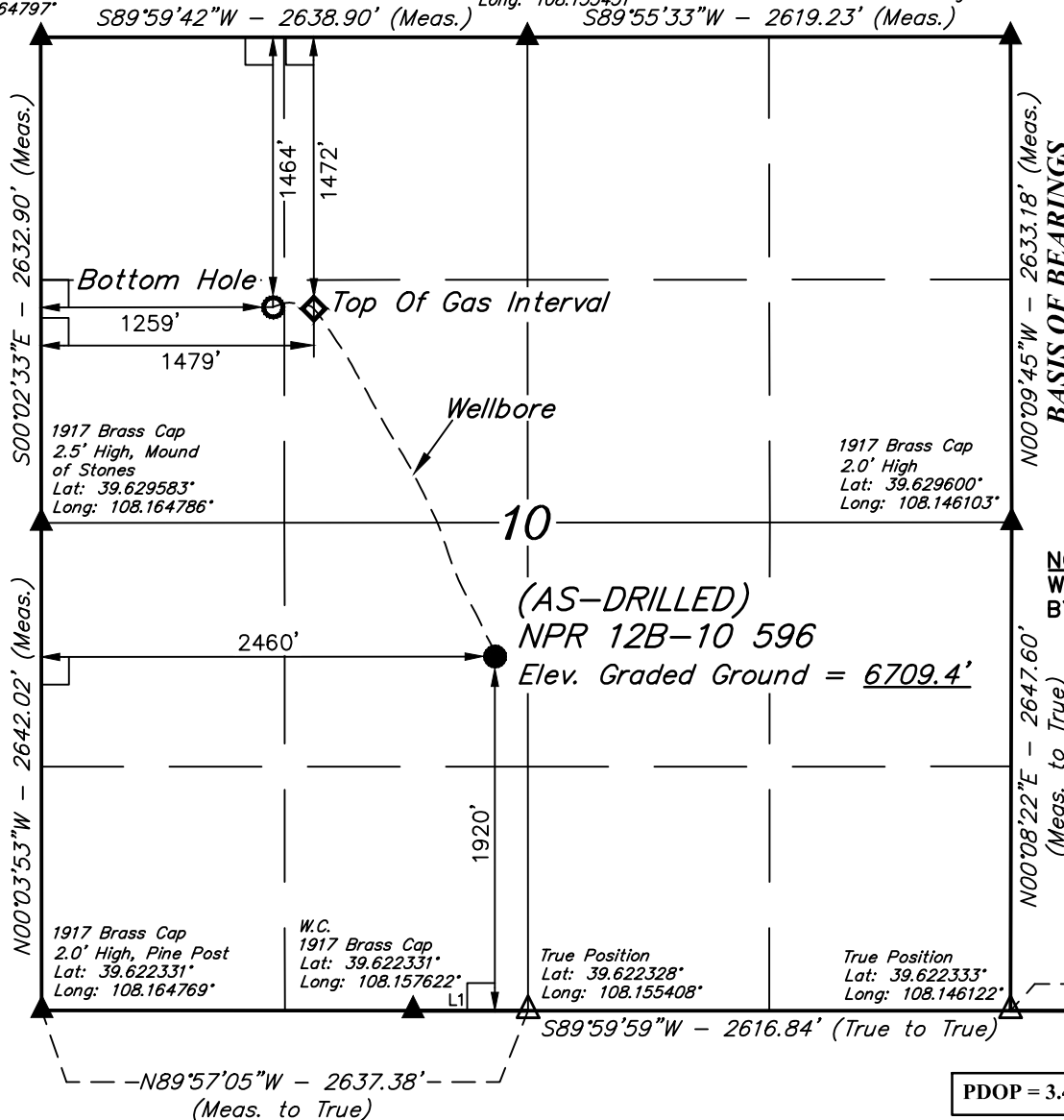
BASIS OF BEARINGS
 BEARINGS ARE A BASED ASSUMPTION THAT THE EAST LINE OF THE NORTHEAST 1/4 OF SECTION 10 BEARS N00°09'45"W. MONUMENTS DESCRIBED HERON.

BASIS OF ELEVATION
 SPOT ELEVATION AT THE NORTHWEST CORNER OF SECTION 30, T5S, R95W, 6th P.M., TAKEN FROM THE FORKED GULCH QUADRANGLE, GARFIELD COUNTY, COLORADO, 7.5 MINUTE QUAD. (TOPOGRAPHIC MAP) PUBLISHED BY THE UNITED STATES DEPARTMENT OF THE INTERIOR, GEOLOGICAL SURVEY. SAID ELEVATION IS MARKED AS BEING 5966 FEET.

1917 Brass Cap
 2.3' High
 Lat: 39.636808°
 Long: 108.164797°

1917 Brass Cap
 1.3' High
 Lat: 39.636814°
 Long: 108.155431°

1917 Brass Cap
 1.3' High
 Lat: 39.636825°
 Long: 108.146133°



LEGEND:

- ☐ = 90° SYMBOL
- = AS-DRILLED WELLHEAD.
- ◆ = TOP OF GAS INTERVAL
- = BOTTOM HOLE.
- ▲ = SECTION CORNERS LOCATED. (NAD 83)
- △ = SECTION CORNERS RE-ESTABLISHED. (Not Set on Ground.) (NAD 83)

LINE TABLE		
LINE	DIRECTION	LENGTH
L1	S89°57'05"E	623.70'
L2	S89°54'44"E	1114.74'



NOTE:
 WELLBORE DATA PROVIDED BY Caerus Oil & Gas LLC.



CERTIFICATE

THIS IS TO CERTIFY THAT THE ABOVE PLAT WAS PREPARED AND LOCATION AS SHOWN WAS STAKED ON THE GROUND FROM FIELD NOTES OF ACTUAL SURVEYS MADE BY ME OR UNDER MY SUPERVISION AND THAT THE SAME ARE TRUE AND CORRECT TO THE BEST OF MY KNOWLEDGE AND BELIEF.

Harold Marshall
 REGISTERED LAND SURVEYOR
 REGISTRATION NO. 18180
 STATE OF COLORADO 10-13-18

PDOP = 3.4

NAD 83 (AS-DRILLED LOCATION)	NAD 83 (TOP OF GAS INTERVAL)	NAD 83 (BOTTOM HOLE)
LATITUDE = 39°37'39.36" (39.627599)	LATITUDE = 39°37'57.98" (39.632772)	LATITUDE = 39°37'58.06" (39.632793)
LONGITUDE = 108°09'21.77" (108.156048)	LONGITUDE = 108°09'34.35" (108.159541)	LONGITUDE = 108°09'37.16" (108.160323)
NAD 27 (AS-DRILLED LOCATION)	NAD 27 (TOP OF GAS INTERVAL)	NAD 27 (BOTTOM HOLE)
LATITUDE = 39°37'39.44" (39.627623)	LATITUDE = 39°37'58.07" (39.632796)	LATITUDE = 39°37'58.14" (39.632817)
LONGITUDE = 108°09'19.48" (108.155412)	LONGITUDE = 108°09'32.06" (108.158905)	LONGITUDE = 108°09'34.87" (108.159687)
UTM NAD 27 (ZONE 12)	UTM NAD 27 (ZONE 12)	UTM NAD 27 (ZONE 12)
N: 14403141.54 E: 2441439.44	N: 14404994.37 E: 2440396.09	N: 14404995.18 E: 2440175.66



UELS, LLC
 Corporate Office * 85 South 200 East
 Vernal, UT 84078 * (435) 789-1017

SURVEYED BY	DAYTON SLAUGH	10-12-18	SCALE
DRAWN BY	M.D.	10-12-18	1" = 1000'

AS-DRILLED WELL LOCATION PLAT