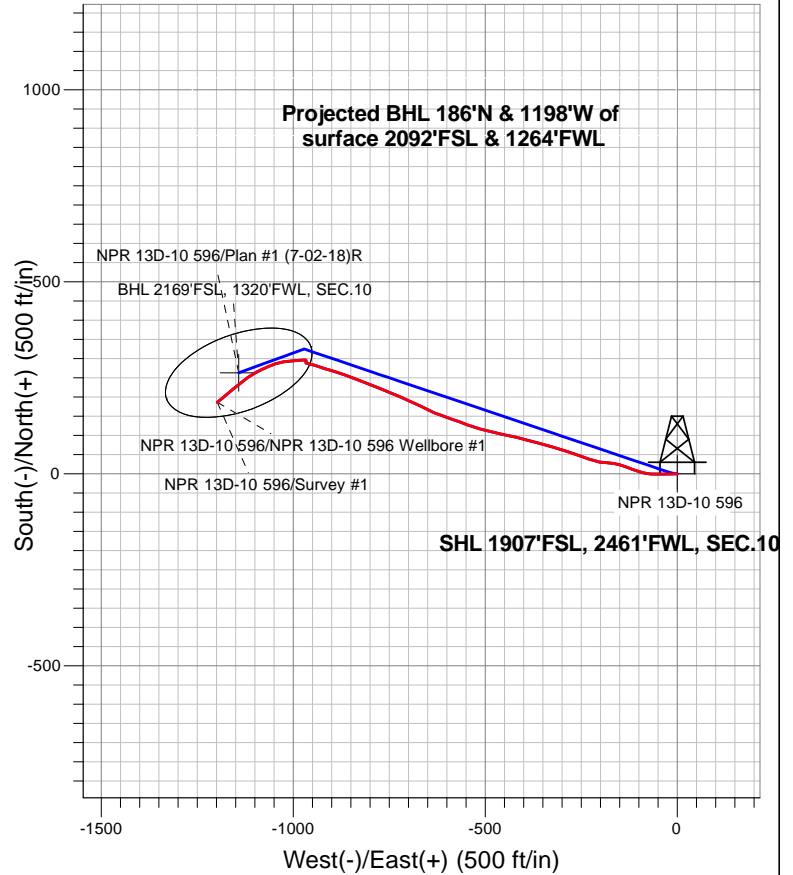


Caerus Oil and Gas LLC



LEGEND

- ✚ NPR 13D-10 596, NPR 13D-10 596 Wellbore #1, Plan #1 (7-02-18)R VO
- ✚ NPR 13D-10 596 Wellbore #1
- Survey #1

Final Survey Plot

Projected Final Survey -
9,515'MD & 9404' TVD @ -1199.24'VS
6.90 deg Inc 231.4 deg AZ

Project: SEC.10-T5S-R96W
Site: K10 596 Pad Sec.10-T5S-R96W
Well: NPR 13D-10 596
Plan: NPR 13D-10 596 Wellbore #1



Caerus Oil and Gas LLC

SEC.10-T5S-R96W

K10 596 Pad Sec.10-T5S-R96W

NPR 13D-10 596

NPR 13D-10 596 Wellbore #1

Survey: Survey #1

Standard Survey Report

10 July, 2018

Company:	Caerus Oil and Gas LLC	Local Co-ordinate Reference:	Well NPR 13D-10 596
Project:	SEC.10-T5S-R96W	TVD Reference:	WELL @ 6733.0ft (Original Well Elev)
Site:	K10 596 Pad Sec.10-T5S-R96W	MD Reference:	WELL @ 6733.0ft (Original Well Elev)
Well:	NPR 13D-10 596	North Reference:	True
Wellbore:	NPR 13D-10 596 Wellbore #1	Survey Calculation Method:	Minimum Curvature
Design:	NPR 13D-10 596 Wellbore #1	Database:	US_EDM

Project	SEC.10-T5S-R96W, Garfield County, CO		
Map System:	Universal Transverse Mercator (US Survey Feet)	System Datum:	Mean Sea Level
Geo Datum:	NAD 1927 - Western US		Using Well Reference Point
Map Zone:	Zone 12N (114 W to 108 W)		Using geodetic scale factor

Site	K10 596 Pad Sec.10-T5S-R96W				
Site Position:		Northing:	14,403,140.13 usft	Latitude:	39.627619
From:	Lat/Long	Easting:	2,441,439.81 usft	Longitude:	-108.155411
Position Uncertainty:	0.0 ft	Slot Radius:	13-3/16 "	Grid Convergence:	1.82 °

Well	NPR 13D-10 596					
Well Position	+N/-S	0.0 ft	Northing:	14,403,128.14 usft	Latitude:	39.627586
	+E/-W	0.0 ft	Easting:	2,441,441.03 usft	Longitude:	-108.155408
Position Uncertainty		0.0 ft	Wellhead Elevation:	0.0 ft	Ground Level:	6,709.0 ft

Wellbore	NPR 13D-10 596 Wellbore #1				
Magnetics	Model Name	Sample Date	Declination (°)	Dip Angle (°)	Field Strength (nT)
	IGRF2010	7/2/2018	9.53	65.62	51,585

Design	NPR 13D-10 596 Wellbore #1				
Audit Notes:					
Version:	1.0	Phase:	ACTUAL	Tie On Depth:	0.0
Vertical Section:	Depth From (TVD) (ft)	+N/-S (ft)	+E/-W (ft)	Direction (°)	
	0.0	0.0	0.0	282.97	

Survey Program	Date	7/10/2018			
From (ft)	To (ft)	Survey (Wellbore)	Tool Name	Description	
130.0	9,515.0	Survey #1 (NPR 13D-10 596 Wellbore #1)	MWD	MWD - Standard	

Survey										
Measured Depth (ft)	Inclination (°)	Azimuth (°)	Vertical Depth (ft)	+N/-S (ft)	+E/-W (ft)	Vertical Section (ft)	Dogleg Rate (°/100usft)	Build Rate (°/100usft)	Turn Rate (°/100usft)	
0.0	0.00	0.00	0.0	0.0	0.0	0.0	0.00	0.00	0.00	
1.0	0.00	0.00	1.0	0.0	0.0	0.0	0.00	0.00	0.00	
SHL 1907'FSL, 2461'FWL, SEC.10										
130.0	0.00	0.00	130.0	0.0	0.0	0.0	0.00	0.00	0.00	
208.0	4.90	266.40	207.9	-0.2	-3.3	3.2	6.28	6.28	0.00	
300.0	7.80	269.20	299.3	-0.5	-13.5	13.0	3.17	3.15	3.04	
392.0	11.90	268.60	390.0	-0.9	-29.2	28.3	4.46	4.46	-0.65	
485.0	12.50	269.90	480.9	-1.1	-48.9	47.4	0.71	0.65	1.40	
577.0	11.80	271.80	570.8	-0.8	-68.2	66.3	0.88	-0.76	2.07	
670.0	11.90	285.60	661.8	2.0	-87.0	85.2	3.04	0.11	14.84	
762.0	10.90	288.10	752.0	7.3	-104.4	103.4	1.21	-1.09	2.72	

Company:	Caerus Oil and Gas LLC	Local Co-ordinate Reference:	Well NPR 13D-10 596
Project:	SEC.10-T5S-R96W	TVD Reference:	WELL @ 6733.0ft (Original Well Elev)
Site:	K10 596 Pad Sec.10-T5S-R96W	MD Reference:	WELL @ 6733.0ft (Original Well Elev)
Well:	NPR 13D-10 596	North Reference:	True
Wellbore:	NPR 13D-10 596 Wellbore #1	Survey Calculation Method:	Minimum Curvature
Design:	NPR 13D-10 596 Wellbore #1	Database:	US_EDM

Survey									
Measured Depth (ft)	Inclination (°)	Azimuth (°)	Vertical Depth (ft)	+N/-S (ft)	+E/-W (ft)	Vertical Section (ft)	Dogleg Rate (°/100usft)	Build Rate (°/100usft)	Turn Rate (°/100usft)
855.0	9.90	289.40	843.5	12.7	-120.3	120.1	1.10	-1.08	1.40
946.0	9.10	292.10	933.2	18.0	-134.3	134.9	1.01	-0.88	2.97
1,041.0	8.50	288.50	1,027.1	23.0	-147.9	149.3	0.86	-0.63	-3.79
1,135.0	8.90	278.80	1,120.0	26.4	-161.7	163.5	1.62	0.43	-10.32
1,229.0	9.20	274.30	1,212.9	28.0	-176.4	178.2	0.82	0.32	-4.79
1,324.0	10.20	274.20	1,306.5	29.2	-192.4	194.0	1.05	1.05	-0.11
1,418.0	12.80	285.60	1,398.6	32.6	-210.7	212.6	3.66	2.77	12.13
1,608.0	13.50	290.40	1,583.7	46.0	-251.8	255.7	0.68	0.37	2.53
1,702.0	13.90	288.80	1,675.0	53.5	-272.7	277.8	0.59	0.43	-1.70
1,796.0	14.30	287.90	1,766.1	60.7	-294.5	300.6	0.49	0.43	-0.96
1,890.0	13.70	285.30	1,857.4	67.2	-316.2	323.3	0.92	-0.64	-2.77
1,985.0	14.00	285.60	1,949.6	73.3	-338.2	346.0	0.32	0.32	0.32
2,080.0	14.00	286.00	2,041.8	79.5	-360.3	368.9	0.10	0.00	0.42
2,174.0	14.20	284.60	2,132.9	85.6	-382.4	391.8	0.42	0.21	-1.49
2,268.0	14.30	284.40	2,224.0	91.3	-404.8	414.9	0.12	0.11	-0.21
2,325.0	14.40	284.40	2,279.3	94.9	-418.5	429.1	0.18	0.18	0.00
2,486.0	14.90	281.40	2,435.0	103.9	-458.1	469.8	0.56	0.31	-1.86
2,580.0	14.80	280.90	2,525.9	108.6	-481.8	493.9	0.17	-0.11	-0.53
2,674.0	13.80	286.30	2,617.0	114.0	-504.3	517.0	1.77	-1.06	5.74
2,769.0	13.40	287.80	2,709.3	120.6	-525.7	539.3	0.56	-0.42	1.58
2,863.0	13.00	290.50	2,800.8	127.6	-546.0	560.7	0.78	-0.43	2.87
2,958.0	12.40	289.40	2,893.5	134.7	-565.6	581.4	0.68	-0.63	-1.16
3,052.0	12.00	287.90	2,985.4	141.1	-584.4	601.2	0.54	-0.43	-1.60
3,147.0	11.80	291.40	3,078.4	147.7	-602.8	620.6	0.79	-0.21	3.68
3,241.0	11.80	288.80	3,170.4	154.3	-620.9	639.7	0.57	0.00	-2.77
3,335.0	10.60	295.80	3,262.6	161.1	-637.8	657.7	1.93	-1.28	7.45
3,430.0	9.90	295.50	3,356.1	168.4	-653.0	674.2	0.74	-0.74	-0.32
3,524.0	9.60	295.10	3,448.7	175.2	-667.4	689.7	0.33	-0.32	-0.43
3,619.0	9.10	295.10	3,542.4	181.8	-681.4	704.8	0.53	-0.53	0.00
3,713.0	8.70	295.80	3,635.3	188.0	-694.5	719.0	0.44	-0.43	0.74
3,808.0	8.70	293.90	3,729.2	194.1	-707.6	733.1	0.30	0.00	-2.00
3,902.0	8.20	293.60	3,822.2	199.6	-720.2	746.6	0.53	-0.53	-0.32
3,996.0	9.10	293.60	3,915.1	205.3	-733.1	760.5	0.96	0.96	0.00
4,090.0	9.30	292.40	4,007.9	211.2	-747.0	775.3	0.29	0.21	-1.28
4,185.0	8.90	292.70	4,101.7	216.9	-760.9	790.1	0.42	-0.42	0.32
4,279.0	8.60	290.50	4,194.6	222.2	-774.2	804.3	0.48	-0.32	-2.34
4,374.0	8.00	289.00	4,288.6	226.8	-787.1	817.9	0.67	-0.63	-1.58
4,469.0	9.00	291.40	4,382.6	231.7	-800.2	831.8	1.12	1.05	2.53
4,563.0	9.00	293.10	4,475.4	237.3	-813.8	846.3	0.28	0.00	1.81
4,658.0	8.80	292.00	4,569.3	242.9	-827.4	860.8	0.28	-0.21	-1.16
4,753.0	8.60	292.00	4,663.2	248.3	-840.7	875.0	0.21	-0.21	0.00
4,847.0	8.40	289.60	4,756.2	253.2	-853.7	888.8	0.43	-0.21	-2.55
4,942.0	8.20	289.00	4,850.2	257.8	-866.7	902.4	0.23	-0.21	-0.63

Company:	Caerus Oil and Gas LLC	Local Co-ordinate Reference:	Well NPR 13D-10 596
Project:	SEC.10-T5S-R96W	TVD Reference:	WELL @ 6733.0ft (Original Well Elev)
Site:	K10 596 Pad Sec.10-T5S-R96W	MD Reference:	WELL @ 6733.0ft (Original Well Elev)
Well:	NPR 13D-10 596	North Reference:	True
Wellbore:	NPR 13D-10 596 Wellbore #1	Survey Calculation Method:	Minimum Curvature
Design:	NPR 13D-10 596 Wellbore #1	Database:	US_EDM

Survey									
Measured Depth (ft)	Inclination (°)	Azimuth (°)	Vertical Depth (ft)	+N/-S (ft)	+E/-W (ft)	Vertical Section (ft)	Dogleg Rate (°/100usft)	Build Rate (°/100usft)	Turn Rate (°/100usft)
5,036.0	8.00	288.30	4,943.2	262.0	-879.2	915.6	0.24	-0.21	-0.74
5,131.0	8.00	287.70	5,037.3	266.1	-891.8	928.7	0.09	0.00	-0.63
5,225.0	8.10	287.40	5,130.4	270.0	-904.3	941.9	0.12	0.11	-0.32
5,319.0	8.10	286.30	5,223.4	273.9	-917.0	955.1	0.16	0.00	-1.17
5,414.0	7.90	285.90	5,317.5	277.6	-929.7	968.3	0.22	-0.21	-0.42
5,508.0	8.20	290.00	5,410.6	281.6	-942.2	981.4	0.69	0.32	4.36
5,603.0	5.90	282.80	5,504.9	285.0	-953.3	993.0	2.59	-2.42	-7.58
5,697.0	3.60	286.70	5,598.5	286.9	-960.9	1,000.8	2.47	-2.45	4.15
5,792.0	1.50	279.60	5,693.4	288.0	-965.0	1,005.0	2.23	-2.21	-7.47
5,886.0	0.30	301.50	5,787.4	288.3	-966.4	1,006.5	1.31	-1.28	23.30
5,981.0	0.50	334.90	5,882.4	288.8	-966.8	1,006.9	0.31	0.21	35.16
6,076.0	0.70	7.80	5,977.4	289.8	-966.9	1,007.3	0.41	0.21	34.63
6,170.0	0.80	10.60	6,071.4	291.0	-966.7	1,007.3	0.11	0.11	2.98
6,265.0	0.90	13.10	6,166.4	292.4	-966.4	1,007.4	0.11	0.11	2.63
6,359.0	1.30	355.90	6,260.4	294.2	-966.3	1,007.7	0.55	0.43	-18.30
6,548.0	1.20	272.00	6,449.4	296.4	-968.4	1,010.2	0.89	-0.05	-44.39
6,642.0	2.00	269.80	6,543.3	296.4	-971.1	1,012.8	0.85	0.85	-2.34
6,737.0	2.10	266.40	6,638.3	296.3	-974.4	1,016.1	0.17	0.11	-3.58
6,831.0	2.40	263.70	6,732.2	296.0	-978.1	1,019.6	0.34	0.32	-2.87
6,926.0	3.20	261.70	6,827.1	295.4	-982.7	1,023.9	0.85	0.84	-2.11
7,020.0	3.30	265.40	6,920.9	294.8	-988.0	1,029.0	0.25	0.11	3.94
7,115.0	3.60	267.40	7,015.7	294.4	-993.7	1,034.5	0.34	0.32	2.11
7,209.0	3.80	266.60	7,109.5	294.1	-999.8	1,040.3	0.22	0.21	-0.85
7,304.0	3.90	266.80	7,204.3	293.7	-1,006.1	1,046.4	0.11	0.11	0.21
7,399.0	4.30	267.10	7,299.1	293.4	-1,012.9	1,052.9	0.42	0.42	0.32
7,588.0	4.30	255.80	7,487.6	291.3	-1,026.9	1,066.1	0.45	0.00	-5.98
7,683.0	4.60	256.60	7,582.3	289.5	-1,034.0	1,072.6	0.32	0.32	0.84
7,772.0	4.70	251.60	7,770.7	285.3	-1,048.8	1,086.0	0.22	0.05	-2.65
7,967.0	4.90	247.90	7,865.3	282.6	-1,056.2	1,092.7	0.39	0.21	-3.89
8,061.0	5.60	247.30	7,958.9	279.3	-1,064.2	1,099.7	0.75	0.74	-0.64
8,156.0	6.30	244.70	8,053.4	275.3	-1,073.1	1,107.5	0.79	0.74	-2.74
8,250.0	6.20	245.60	8,146.9	271.0	-1,082.4	1,115.6	0.15	-0.11	0.96
8,345.0	6.70	243.30	8,241.3	266.3	-1,092.1	1,124.0	0.59	0.53	-2.42
8,439.0	6.50	240.60	8,334.6	261.3	-1,101.6	1,132.1	0.39	-0.21	-2.87
8,534.0	6.50	238.60	8,429.0	255.8	-1,110.9	1,139.9	0.24	0.00	-2.11
8,628.0	6.50	234.00	8,522.4	249.9	-1,119.7	1,147.2	0.55	0.00	-4.89
8,723.0	6.70	230.50	8,616.8	243.2	-1,128.3	1,154.1	0.47	0.21	-3.68
8,818.0	6.20	230.80	8,711.2	236.5	-1,136.6	1,160.7	0.53	-0.53	0.32
8,912.0	5.80	234.10	8,804.7	230.5	-1,144.4	1,166.9	0.56	-0.43	3.51
9,007.0	6.10	231.40	8,899.2	224.5	-1,152.2	1,173.2	0.43	0.32	-2.84
9,101.0	7.00	226.80	8,992.5	217.5	-1,160.3	1,179.5	1.11	0.96	-4.89
9,290.0	6.50	231.00	9,180.2	202.9	-1,177.0	1,192.5	0.37	-0.26	2.22
9,385.0	6.80	232.60	9,274.6	196.1	-1,185.6	1,199.4	0.37	0.32	1.68

Company:	Caerus Oil and Gas LLC	Local Co-ordinate Reference:	Well NPR 13D-10 596
Project:	SEC.10-T5S-R96W	TVD Reference:	WELL @ 6733.0ft (Original Well Elev)
Site:	K10 596 Pad Sec.10-T5S-R96W	MD Reference:	WELL @ 6733.0ft (Original Well Elev)
Well:	NPR 13D-10 596	North Reference:	True
Wellbore:	NPR 13D-10 596 Wellbore #1	Survey Calculation Method:	Minimum Curvature
Design:	NPR 13D-10 596 Wellbore #1	Database:	US_EDM

Survey									
Measured Depth (ft)	Inclination (°)	Azimuth (°)	Vertical Depth (ft)	+N/-S (ft)	+E/-W (ft)	Vertical Section (ft)	Dogleg Rate (°/100usft)	Build Rate (°/100usft)	Turn Rate (°/100usft)
9,440.0	6.90	231.40	9,329.2	192.0	-1,190.8	1,203.5	0.32	0.18	-2.18
9,514.2	6.90	231.40	9,402.9	186.5	-1,197.8	1,209.1	0.00	0.00	0.00
BHL 2169'FSL, 1320'FWL, SEC.10									
9,515.0	6.90	231.40	9,403.7	186.4	-1,197.8	1,209.1	0.00	0.00	0.00

Checked By: _____	Approved By: _____	Date: _____
-------------------	--------------------	-------------