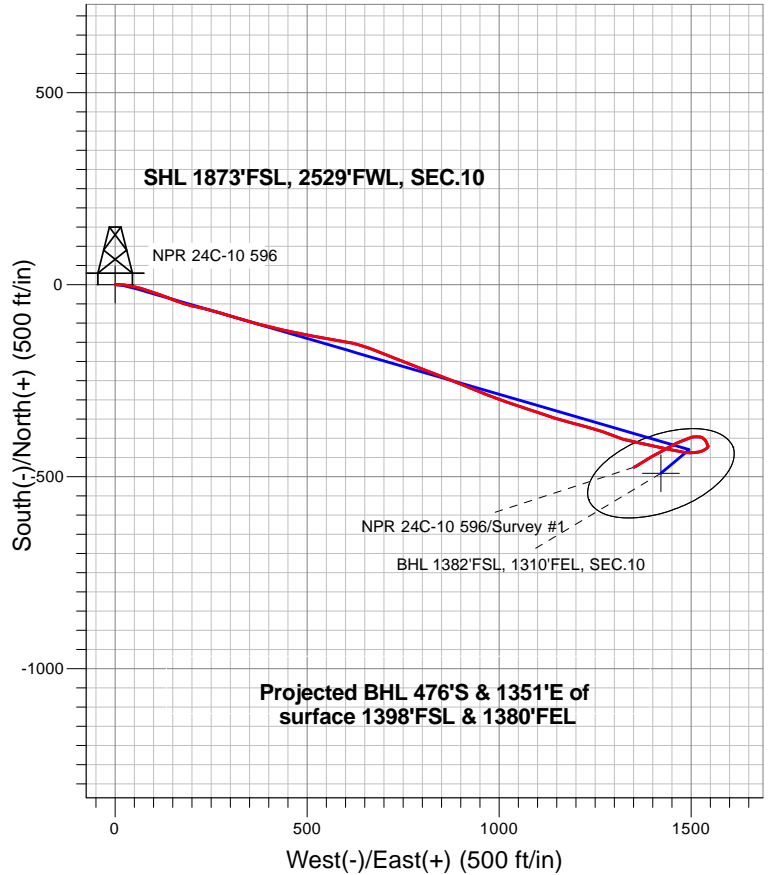


## Caerus Oil and Gas LLC



### LEGEND

- △ NPR 24C-10 596, NPR 24C-10 596 Wellbore #1, Plan #2 (6-12-18) V0
- NPR 24C-10 596 Wellbore #1
- Survey #1

## Final Survey Plot

**Projected Final Survey -**  
**9,757'MD & 9510' TVD @ 1430.94'VS**  
**6.2 deg Inc 242.2 deg AZ**

Project: SEC.10-T5S-R96W  
 Site: K10 596 Pad Sec.10-T5S-R96W  
 Well: NPR 24C-10 596  
 Plan: NPR 24C-10 596 Wellbore #1



## **Caerus Oil and Gas LLC**

**SEC.10-T5S-R96W**

**K10 596 Pad Sec.10-T5S-R96W**

**NPR 24C-10 596**

**NPR 24C-10 596 Wellbore #1**

**Survey: Survey #1**

## **Standard Survey Report**

**19 June, 2018**

<b>Company:</b>	Caerus Oil and Gas LLC	<b>Local Co-ordinate Reference:</b>	Well NPR 24C-10 596
<b>Project:</b>	SEC.10-T5S-R96W	<b>TVD Reference:</b>	WELL @ 6733.0ft (Original Well Elev)
<b>Site:</b>	K10 596 Pad Sec.10-T5S-R96W	<b>MD Reference:</b>	WELL @ 6733.0ft (Original Well Elev)
<b>Well:</b>	NPR 24C-10 596	<b>North Reference:</b>	True
<b>Wellbore:</b>	NPR 24C-10 596 Wellbore #1	<b>Survey Calculation Method:</b>	Minimum Curvature
<b>Design:</b>	NPR 24C-10 596 Wellbore #1	<b>Database:</b>	US_EDM

<b>Project</b>	SEC.10-T5S-R96W, Garfield County, CO		
<b>Map System:</b>	Universal Transverse Mercator (US Survey Feet)	<b>System Datum:</b>	Mean Sea Level
<b>Geo Datum:</b>	NAD 1927 - Western US		Using Well Reference Point
<b>Map Zone:</b>	Zone 12N (114 W to 108 W)		Using geodetic scale factor

Site	K10 596 Pad Sec.10-T5S-R96W				
Site Position:		Northing:	14,403,140.13 usft	Latitude:	39.627619
From:	Lat/Long	Easting:	2,441,439.81 usft	Longitude:	-108.155411
Position Uncertainty:	0.0 ft	Slot Radius:	13-3/16 "	Grid Convergence:	1.82 °

Well	NPR 24C-10 596					
Well Position	+N/-S	0.0 ft	Northing:	14,403,096.77 usft	Latitude:	39.627494
	+E/-W	0.0 ft	Easting:	2,441,509.41 usft	Longitude:	-108.155169
Position Uncertainty		0.0 ft	Wellhead Elevation:	0.0 ft	Ground Level:	6,709.0 ft

<b>Wellbore</b>	NPR 24C-10 596 Wellbore #1				
<b>Magnetics</b>	<b>Model Name</b>	<b>Sample Date</b>	<b>Declination (°)</b>	<b>Dip Angle (°)</b>	<b>Field Strength (nT)</b>
	HDGM	6/12/2018	9.58	65.83	51,463

<b>Design</b>	NPR 24C-10 596 Wellbore #1				
<b>Audit Notes:</b>					
<b>Version:</b>	1.0	<b>Phase:</b>	ACTUAL	<b>Tie On Depth:</b>	0.0
<b>Vertical Section:</b>	<b>Depth From (TVD) (ft)</b>	<b>+N/-S (ft)</b>	<b>+E/-W (ft)</b>	<b>Direction (°)</b>	
	0.0	0.0	0.0	109.07	

<b>Survey Program</b>	<b>Date</b>	6/19/2018			
<b>From (ft)</b>	<b>To (ft)</b>	<b>Survey (Wellbore)</b>	<b>Tool Name</b>	<b>Description</b>	
130.0	9,757.0	Survey #1 (NPR 24C-10 596 Wellbore #1)	MWD	MWD - Standard	

<b>Survey</b>										
<b>Measured Depth (ft)</b>	<b>Inclination (°)</b>	<b>Azimuth (°)</b>	<b>Vertical Depth (ft)</b>	<b>+N/-S (ft)</b>	<b>+E/-W (ft)</b>	<b>Vertical Section (ft)</b>	<b>Dogleg Rate (°/100usft)</b>	<b>Build Rate (°/100usft)</b>	<b>Turn Rate (°/100usft)</b>	
0.0	0.00	0.00	0.0	0.0	0.0	0.0	0.00	0.00	0.00	
1.0	0.00	0.00	1.0	0.0	0.0	0.0	0.00	0.00	0.00	
<b>SHL 1873'FSL, 2529'FWL, SEC.10</b>										
130.0	0.00	0.00	130.0	0.0	0.0	0.0	0.00	0.00	0.00	
302.0	4.70	93.70	301.8	-0.5	7.0	6.8	2.73	2.73	0.00	
395.0	6.40	88.10	394.4	-0.5	16.0	15.3	1.92	1.83	-6.02	
487.0	7.10	95.30	485.7	-0.9	26.8	25.6	1.19	0.76	7.83	
579.0	8.70	100.50	576.9	-2.7	39.3	38.0	1.90	1.74	5.65	
672.0	10.20	104.30	668.6	-6.0	54.2	53.2	1.75	1.61	4.09	
764.0	11.60	107.90	758.9	-10.8	70.9	70.6	1.69	1.52	3.91	
857.0	13.10	108.60	849.8	-17.1	89.8	90.4	1.62	1.61	0.75	

<b>Company:</b>	Caerus Oil and Gas LLC	<b>Local Co-ordinate Reference:</b>	Well NPR 24C-10 596
<b>Project:</b>	SEC.10-T5S-R96W	<b>TVD Reference:</b>	WELL @ 6733.0ft (Original Well Elev)
<b>Site:</b>	K10 596 Pad Sec.10-T5S-R96W	<b>MD Reference:</b>	WELL @ 6733.0ft (Original Well Elev)
<b>Well:</b>	NPR 24C-10 596	<b>North Reference:</b>	True
<b>Wellbore:</b>	NPR 24C-10 596 Wellbore #1	<b>Survey Calculation Method:</b>	Minimum Curvature
<b>Design:</b>	NPR 24C-10 596 Wellbore #1	<b>Database:</b>	US_EDM

Survey									
Measured Depth (ft)	Inclination (°)	Azimuth (°)	Vertical Depth (ft)	+N/-S (ft)	+E/-W (ft)	Vertical Section (ft)	Dogleg Rate (°/100usft)	Build Rate (°/100usft)	Turn Rate (°/100usft)
948.0	14.50	108.60	938.1	-24.0	110.4	112.1	1.54	1.54	0.00
1,043.0	17.00	110.80	1,029.6	-32.7	134.6	137.9	2.71	2.63	2.32
1,137.0	19.30	111.30	1,118.9	-43.3	161.9	167.2	2.45	2.45	0.53
1,232.0	15.50	105.30	1,209.5	-52.3	188.8	195.6	4.42	-4.00	-6.32
1,326.0	14.80	101.60	1,300.3	-58.0	212.7	220.0	1.27	-0.74	-3.94
1,420.0	19.30	103.90	1,390.1	-64.2	239.6	247.4	4.84	4.79	2.45
1,515.0	21.60	106.90	1,479.1	-73.0	271.5	280.5	2.66	2.42	3.16
1,609.0	21.40	107.00	1,566.6	-83.1	304.5	314.9	0.22	-0.21	0.11
1,704.0	21.90	105.60	1,654.9	-92.9	338.1	349.9	0.76	0.53	-1.47
1,799.0	22.20	105.00	1,742.9	-102.3	372.5	385.5	0.39	0.32	-0.63
1,893.0	21.00	102.70	1,830.3	-110.6	406.1	420.0	1.56	-1.28	-2.45
1,987.0	20.30	102.90	1,918.3	-118.0	438.4	452.9	0.75	-0.74	0.21
2,082.0	19.20	101.40	2,007.7	-124.7	469.8	484.8	1.27	-1.16	-1.58
2,176.0	19.20	101.30	2,096.5	-130.8	500.1	515.4	0.03	0.00	-0.11
2,271.0	20.00	101.50	2,186.0	-137.1	531.4	547.0	0.85	0.84	0.21
2,365.0	20.00	98.70	2,274.3	-142.8	563.0	578.8	1.02	0.00	-2.98
2,459.0	20.10	98.70	2,362.6	-147.6	594.9	610.5	0.11	0.11	0.00
2,554.0	21.70	105.50	2,451.4	-154.8	627.9	644.1	3.06	1.68	7.16
2,648.0	22.50	109.80	2,538.5	-165.5	661.6	679.4	1.92	0.85	4.57
2,743.0	22.50	111.70	2,626.2	-178.4	695.6	715.7	0.77	0.00	2.00
2,837.0	22.60	111.80	2,713.0	-191.8	729.1	751.7	0.11	0.11	0.11
2,895.0	23.50	112.00	2,766.4	-200.2	750.1	774.4	1.56	1.55	0.34
3,058.0	23.80	110.70	2,915.7	-224.0	811.0	839.7	0.37	0.18	-0.80
3,152.0	22.50	111.60	3,002.2	-237.4	845.5	876.7	1.43	-1.38	0.96
3,247.0	21.00	111.30	3,090.4	-250.2	878.3	911.8	1.58	-1.58	-0.32
3,341.0	19.70	112.70	3,178.5	-262.5	908.6	944.5	1.48	-1.38	1.49
3,435.0	19.70	112.00	3,267.0	-274.5	937.9	976.1	0.25	0.00	-0.74
3,530.0	18.70	110.90	3,356.7	-286.0	967.0	1,007.3	1.12	-1.05	-1.16
3,624.0	17.60	110.00	3,446.1	-296.2	994.4	1,036.6	1.21	-1.17	-0.96
3,718.0	17.30	109.70	3,535.7	-305.8	1,020.9	1,064.8	0.33	-0.32	-0.32
3,813.0	16.90	109.20	3,626.5	-315.1	1,047.2	1,092.7	0.45	-0.42	-0.53
3,907.0	16.30	107.50	3,716.6	-323.5	1,072.7	1,119.6	0.82	-0.64	-1.81
4,002.0	15.40	108.00	3,808.0	-331.4	1,097.4	1,145.5	0.96	-0.95	0.53
4,096.0	13.90	108.40	3,898.9	-338.9	1,120.0	1,169.3	1.60	-1.60	0.43
4,191.0	13.30	108.30	3,991.3	-345.9	1,141.2	1,191.6	0.63	-0.63	-0.11
4,285.0	12.80	106.80	4,082.9	-352.3	1,161.5	1,212.8	0.64	-0.53	-1.60
4,379.0	11.60	106.20	4,174.7	-357.9	1,180.5	1,232.7	1.28	-1.28	-0.64
4,474.0	10.70	104.20	4,267.9	-362.8	1,198.2	1,251.0	1.03	-0.95	-2.11
4,568.0	9.30	102.10	4,360.5	-366.5	1,214.1	1,267.2	1.54	-1.49	-2.23
4,663.0	10.00	106.00	4,454.2	-370.4	1,229.6	1,283.1	1.01	0.74	4.11
4,757.0	9.40	106.20	4,546.8	-374.8	1,244.8	1,298.9	0.64	-0.64	0.21
4,852.0	8.70	109.70	4,640.6	-379.4	1,259.0	1,313.8	0.94	-0.74	3.68
4,947.0	10.20	109.90	4,734.3	-384.7	1,273.7	1,329.4	1.58	1.58	0.21

<b>Company:</b>	Caerus Oil and Gas LLC	<b>Local Co-ordinate Reference:</b>	Well NPR 24C-10 596
<b>Project:</b>	SEC.10-T5S-R96W	<b>TVD Reference:</b>	WELL @ 6733.0ft (Original Well Elev)
<b>Site:</b>	K10 596 Pad Sec.10-T5S-R96W	<b>MD Reference:</b>	WELL @ 6733.0ft (Original Well Elev)
<b>Well:</b>	NPR 24C-10 596	<b>North Reference:</b>	True
<b>Wellbore:</b>	NPR 24C-10 596 Wellbore #1	<b>Survey Calculation Method:</b>	Minimum Curvature
<b>Design:</b>	NPR 24C-10 596 Wellbore #1	<b>Database:</b>	US_EDM

Survey									
Measured Depth (ft)	Inclination (°)	Azimuth (°)	Vertical Depth (ft)	+N/-S (ft)	+E/-W (ft)	Vertical Section (ft)	Dogleg Rate (°/100usft)	Build Rate (°/100usft)	Turn Rate (°/100usft)
5,041.0	10.90	109.80	4,826.8	-390.5	1,289.8	1,346.6	0.74	0.74	-0.11
5,136.0	10.40	110.00	4,920.1	-396.5	1,306.4	1,364.2	0.53	-0.53	0.21
5,230.0	10.30	110.00	5,012.6	-402.2	1,322.2	1,381.1	0.11	-0.11	0.00
5,325.0	11.10	101.60	5,105.9	-407.0	1,339.2	1,398.7	1.84	0.84	-8.84
5,419.0	11.10	101.30	5,198.2	-410.6	1,356.9	1,416.6	0.06	0.00	-0.32
5,514.0	11.10	100.70	5,291.4	-414.1	1,374.9	1,434.7	0.12	0.00	-0.63
5,608.0	11.50	101.60	5,383.6	-417.6	1,392.9	1,452.9	0.47	0.43	0.96
5,702.0	11.80	102.80	5,475.6	-421.7	1,411.5	1,471.8	0.41	0.32	1.28
5,797.0	11.40	103.60	5,568.7	-426.0	1,430.1	1,490.8	0.45	-0.42	0.84
5,891.0	10.90	102.00	5,660.9	-430.0	1,447.8	1,508.9	0.63	-0.53	-1.70
5,986.0	10.70	102.80	5,754.2	-433.9	1,465.2	1,526.5	0.26	-0.21	0.84
6,081.0	9.70	96.70	5,847.7	-436.8	1,481.7	1,543.1	1.55	-1.05	-6.42
6,175.0	7.60	90.30	5,940.7	-437.7	1,495.8	1,556.7	2.45	-2.23	-6.81
6,270.0	6.10	82.10	6,035.0	-437.0	1,507.1	1,567.2	1.88	-1.58	-8.63
6,364.0	5.60	81.00	6,128.5	-435.6	1,516.6	1,575.7	0.55	-0.53	-1.17
6,459.0	4.10	78.70	6,223.2	-434.3	1,524.5	1,582.7	1.59	-1.58	-2.42
6,553.0	3.20	61.10	6,317.0	-432.3	1,530.1	1,587.4	1.52	-0.96	-18.72
6,648.0	2.80	59.90	6,411.8	-429.9	1,534.4	1,590.7	0.43	-0.42	-1.26
6,742.0	2.90	55.20	6,505.7	-427.4	1,538.3	1,593.6	0.27	0.11	-5.00
6,836.0	2.80	44.70	6,599.6	-424.4	1,541.9	1,596.0	0.56	-0.11	-11.17
6,931.0	1.30	27.50	6,694.6	-421.8	1,544.0	1,597.1	1.69	-1.58	-18.11
7,026.0	1.00	326.90	6,789.5	-420.1	1,544.1	1,596.6	1.25	-0.32	-63.79
7,120.0	1.50	327.60	6,883.5	-418.4	1,543.0	1,595.0	0.53	0.53	0.74
7,309.0	2.30	340.40	7,072.4	-412.7	1,540.4	1,590.7	0.48	0.42	6.77
7,404.0	3.00	335.40	7,167.3	-408.7	1,538.7	1,587.8	0.78	0.74	-5.26
7,498.0	3.30	320.40	7,261.2	-404.4	1,536.0	1,583.8	0.93	0.32	-15.96
7,593.0	3.10	307.40	7,356.0	-400.7	1,532.2	1,579.0	0.79	-0.21	-13.68
7,688.0	3.30	294.80	7,450.9	-398.0	1,527.7	1,573.9	0.77	0.21	-13.26
7,782.0	2.80	282.00	7,544.7	-396.4	1,523.0	1,568.9	0.90	-0.53	-13.62
7,877.0	3.10	269.60	7,639.6	-395.9	1,518.1	1,564.2	0.74	0.32	-13.05
7,971.0	3.10	274.00	7,733.5	-395.8	1,513.0	1,559.3	0.25	0.00	4.68
8,066.0	3.20	267.20	7,828.3	-395.7	1,507.8	1,554.4	0.41	0.11	-7.16
8,161.0	4.40	252.30	7,923.1	-396.9	1,501.7	1,549.0	1.63	1.26	-15.68
8,255.0	4.40	248.70	8,016.8	-399.3	1,494.9	1,543.4	0.29	0.00	-3.83
8,350.0	5.30	248.30	8,111.5	-402.3	1,487.4	1,537.3	0.95	0.95	-0.42
8,539.0	6.60	248.50	8,299.5	-409.5	1,469.2	1,522.4	0.69	0.69	0.11
8,633.0	6.50	244.30	8,392.9	-413.8	1,459.4	1,514.5	0.52	-0.11	-4.47
8,728.0	5.70	241.30	8,487.3	-418.4	1,450.4	1,507.5	0.91	-0.84	-3.16
8,822.0	5.50	242.20	8,580.9	-422.7	1,442.3	1,501.3	0.23	-0.21	0.96
8,917.0	5.70	241.40	8,675.4	-427.1	1,434.2	1,495.0	0.23	0.21	-0.84
9,012.0	5.40	238.40	8,770.0	-431.7	1,426.2	1,489.0	0.44	-0.32	-3.16
9,295.0	7.50	243.80	9,051.2	-446.8	1,398.3	1,467.6	0.77	0.74	1.91
Last survey - 9295' MD									

<b>Company:</b>	Caerus Oil and Gas LLC	<b>Local Co-ordinate Reference:</b>	Well NPR 24C-10 596
<b>Project:</b>	SEC.10-T5S-R96W	<b>TVD Reference:</b>	WELL @ 6733.0ft (Original Well Elev)
<b>Site:</b>	K10 596 Pad Sec.10-T5S-R96W	<b>MD Reference:</b>	WELL @ 6733.0ft (Original Well Elev)
<b>Well:</b>	NPR 24C-10 596	<b>North Reference:</b>	True
<b>Wellbore:</b>	NPR 24C-10 596 Wellbore #1	<b>Survey Calculation Method:</b>	Minimum Curvature
<b>Design:</b>	NPR 24C-10 596 Wellbore #1	<b>Database:</b>	US_EDM

Survey									
Measured Depth (ft)	Inclination (°)	Azimuth (°)	Vertical Depth (ft)	+N/-S (ft)	+E/-W (ft)	Vertical Section (ft)	Dogleg Rate (°/100usft)	Build Rate (°/100usft)	Turn Rate (°/100usft)
9,390.0	7.60	234.80	9,145.4	-453.2	1,387.6	1,459.5	1.25	0.11	-9.47
9,687.0	6.20	242.20	9,440.2	-472.0	1,357.4	1,437.1	0.56	-0.47	2.49
9,757.0	6.20	242.20	9,509.8	-475.5	1,350.7	1,431.9	0.00	0.00	0.00
BHL 1382'FSL, 1310'FEL, SEC.10									

Survey Annotations				
Measured Depth (ft)	Vertical Depth (ft)	Local Coordinates		Comment
		+N/-S (ft)	+E/-W (ft)	
9,295.0	9,051.2	-446.8	1,398.3	Last survey - 9295' MD

Checked By: _____	Approved By: _____	Date: _____
-------------------	--------------------	-------------