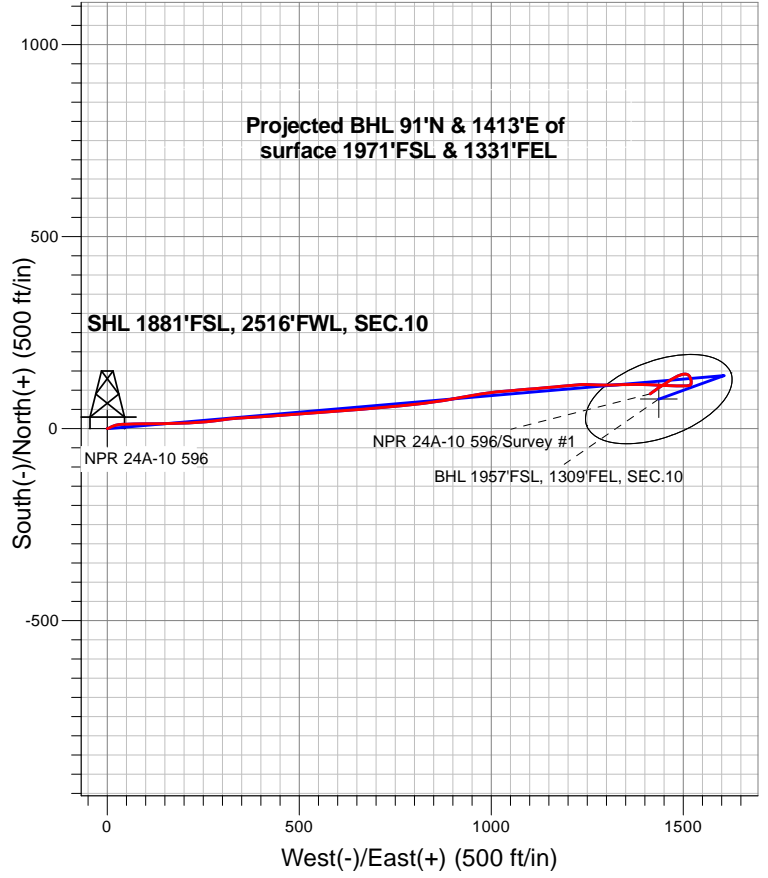
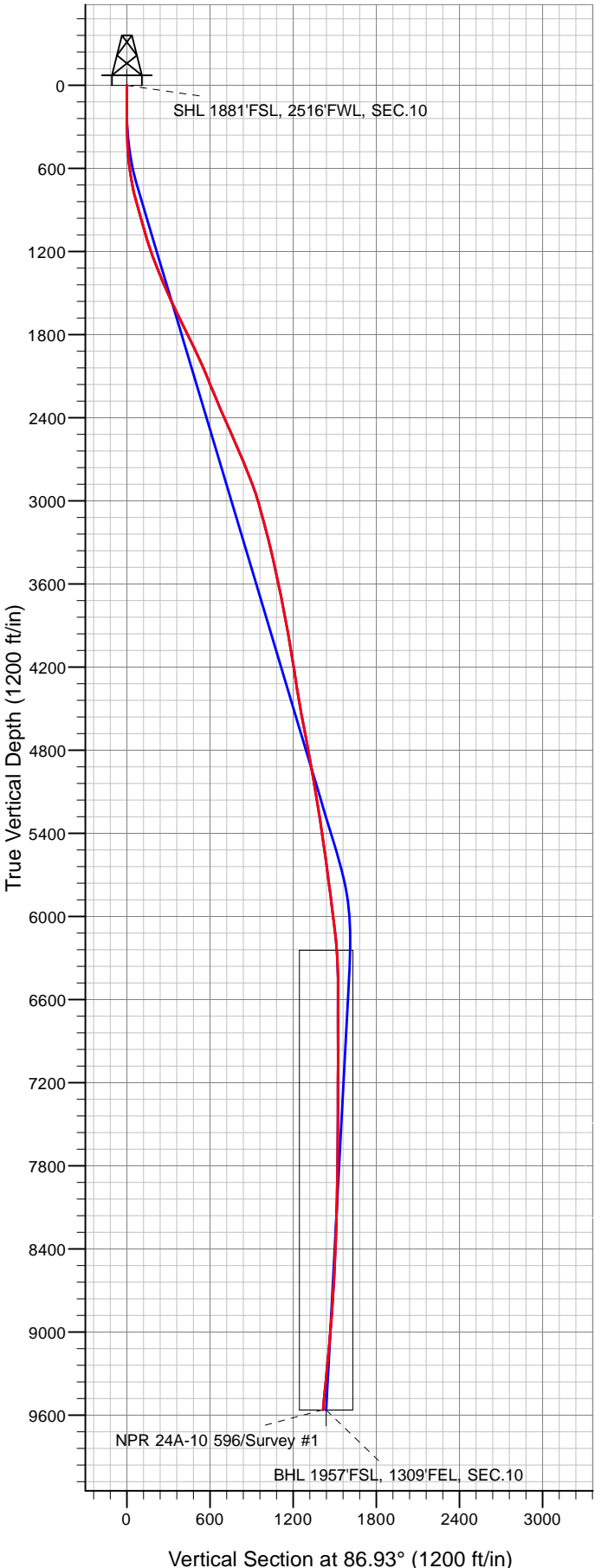


Caerus Oil and Gas LLC



- LEGEND**
- ◆ NPR 24A-10 596, NPR 24A-10 596 Wellbore #1, Plan #1 (5-28-18) V0
 - NPR 24A-10 596 Wellbore #1
 - Survey #1

Final Survey Plot

**Projected Final Survey -
 9,800'MD & 9560' TVD @ 1416.32'VS
 6.2 deg Inc 235.9 deg AZ**

Project: SEC.10-T5S-R96W
 Site: K10 596 Pad Sec.10-T5S-R96W
 Well: NPR 24A-10 596
 Plan: NPR 24A-10 596 Wellbore #1



Directional

Caerus Oil and Gas LLC

SEC.10-T5S-R96W

K10 596 Pad Sec.10-T5S-R96W

NPR 24A-10 596

NPR 24A-10 596 Wellbore #1

Survey: Survey #1

Standard Survey Report

04 June, 2018

Company:	Caerus Oil and Gas LLC	Local Co-ordinate Reference:	Well NPR 24A-10 596
Project:	SEC.10-T5S-R96W	TVD Reference:	WELL @ 6733.0ft (Original Well Elev)
Site:	K10 596 Pad Sec.10-T5S-R96W	MD Reference:	WELL @ 6733.0ft (Original Well Elev)
Well:	NPR 24A-10 596	North Reference:	True
Wellbore:	NPR 24A-10 596 Wellbore #1	Survey Calculation Method:	Minimum Curvature
Design:	NPR 24A-10 596 Wellbore #1	Database:	US_EDM

Project	SEC.10-T5S-R96W, Garfield County, CO		
Map System:	Universal Transverse Mercator (US Survey Feet)	System Datum:	Mean Sea Level
Geo Datum:	NAD 1927 - Western US		Using Well Reference Point
Map Zone:	Zone 12N (114 W to 108 W)		Using geodetic scale factor

Site	K10 596 Pad Sec.10-T5S-R96W				
Site Position:		Northing:	14,403,140.13 usft	Latitude:	39.627619
From:	Lat/Long	Easting:	2,441,439.81 usft	Longitude:	-108.155411
Position Uncertainty:	0.0 ft	Slot Radius:	13-3/16 "	Grid Convergence:	1.82 °

Well	NPR 24A-10 596					
Well Position	+N/-S	0.0 ft	Northing:	14,403,104.74 usft	Latitude:	39.627517
	+E/-W	0.0 ft	Easting:	2,441,496.47 usft	Longitude:	-108.155214
Position Uncertainty		0.0 ft	Wellhead Elevation:	0.0 ft	Ground Level:	6,709.0 ft

Wellbore	NPR 24A-10 596 Wellbore #1				
Magnetics	Model Name	Sample Date	Declination (°)	Dip Angle (°)	Field Strength (nT)
	HDGM	5/28/2018	9.58	65.83	51,468

Design	NPR 24A-10 596 Wellbore #1				
Audit Notes:					
Version:	1.0	Phase:	ACTUAL	Tie On Depth:	0.0
Vertical Section:	Depth From (TVD) (ft)	+N/-S (ft)	+E/-W (ft)	Direction (°)	
	0.0	0.0	0.0	86.93	

Survey Program	Date	6/4/2018			
From (ft)	To (ft)	Survey (Wellbore)	Tool Name	Description	
130.0	9,800.0	Survey #1 (NPR 24A-10 596 Wellbore #1)	MWD	MWD - Standard	

Survey										
Measured Depth (ft)	Inclination (°)	Azimuth (°)	Vertical Depth (ft)	+N/-S (ft)	+E/-W (ft)	Vertical Section (ft)	Dogleg Rate (°/100usft)	Build Rate (°/100usft)	Turn Rate (°/100usft)	
0.0	0.00	0.00	0.0	0.0	0.0	0.0	0.00	0.00	0.00	
1.0	0.00	0.00	1.0	0.0	0.0	0.0	0.00	0.00	0.00	
SHL 1881'FSL, 2516'FWL, SEC.10										
130.0	0.00	0.00	130.0	0.0	0.0	0.0	0.00	0.00	0.00	
394.0	1.50	69.60	394.0	1.2	3.2	3.3	0.57	0.57	0.00	
486.0	4.40	60.60	485.8	3.4	7.4	7.6	3.18	3.15	-9.78	
578.0	7.60	69.40	577.3	7.2	16.2	16.6	3.61	3.48	9.57	
671.0	9.60	82.20	669.3	10.4	29.7	30.2	2.96	2.15	13.76	
763.0	12.30	88.90	759.6	11.7	47.1	47.6	3.24	2.93	7.28	
855.0	15.60	89.80	848.9	11.9	69.2	69.8	3.59	3.59	0.98	
947.0	16.30	87.90	937.3	12.4	94.5	95.0	0.95	0.76	-2.07	

Company:	Caerus Oil and Gas LLC	Local Co-ordinate Reference:	Well NPR 24A-10 596
Project:	SEC.10-T5S-R96W	TVD Reference:	WELL @ 6733.0ft (Original Well Elev)
Site:	K10 596 Pad Sec.10-T5S-R96W	MD Reference:	WELL @ 6733.0ft (Original Well Elev)
Well:	NPR 24A-10 596	North Reference:	True
Wellbore:	NPR 24A-10 596 Wellbore #1	Survey Calculation Method:	Minimum Curvature
Design:	NPR 24A-10 596 Wellbore #1	Database:	US_EDM

Survey										
Measured Depth (ft)	Inclination (°)	Azimuth (°)	Vertical Depth (ft)	+N/-S (ft)	+E/-W (ft)	Vertical Section (ft)	Dogleg Rate (°/100usft)	Build Rate (°/100usft)	Turn Rate (°/100usft)	
1,042.0	14.60	89.10	1,028.9	13.1	119.8	120.3	1.82	-1.79	1.26	
1,136.0	17.70	90.00	1,119.2	13.3	145.9	146.4	3.31	3.30	0.96	
1,230.0	20.40	88.70	1,208.0	13.7	176.6	177.1	2.91	2.87	-1.38	
1,325.0	21.00	87.50	1,296.9	14.8	210.2	210.7	0.77	0.63	-1.26	
1,419.0	22.40	85.30	1,384.2	17.0	244.9	245.4	1.72	1.49	-2.34	
1,514.0	23.40	82.80	1,471.7	20.8	281.6	282.3	1.47	1.05	-2.63	
1,608.0	24.90	83.50	1,557.5	25.4	319.8	320.7	1.62	1.60	0.74	
1,702.0	25.20	86.60	1,642.7	28.8	359.4	360.5	1.43	0.32	3.30	
1,797.0	26.90	86.40	1,728.0	31.4	401.1	402.2	1.79	1.79	-0.21	
1,891.0	26.70	86.20	1,811.9	34.1	443.4	444.6	0.23	-0.21	-0.21	
1,986.0	25.40	85.70	1,897.3	37.1	485.0	486.3	1.39	-1.37	-0.53	
2,080.0	24.40	85.90	1,982.5	40.0	524.5	525.8	1.07	-1.06	0.21	
2,175.0	22.70	85.60	2,069.6	42.8	562.3	563.8	1.79	-1.79	-0.32	
2,269.0	22.50	85.60	2,156.4	45.5	598.3	599.9	0.21	-0.21	0.00	
2,363.0	22.80	85.70	2,243.1	48.3	634.4	636.1	0.32	0.32	0.11	
2,458.0	22.70	84.90	2,330.8	51.3	671.0	672.8	0.34	-0.11	-0.84	
2,552.0	23.90	85.50	2,417.1	54.4	708.1	710.0	1.30	1.28	0.64	
2,647.0	24.30	84.10	2,503.8	57.9	746.7	748.7	0.73	0.42	-1.47	
2,741.0	23.70	84.10	2,589.7	61.9	784.7	786.9	0.64	-0.64	0.00	
2,835.0	21.90	83.60	2,676.3	65.7	821.0	823.3	1.93	-1.91	-0.53	
2,915.0	22.50	82.30	2,750.4	69.5	851.0	853.5	0.97	0.75	-1.63	
3,058.0	21.30	78.80	2,883.1	78.2	903.6	906.4	1.24	-0.84	-2.45	
3,152.0	17.00	80.80	2,971.9	83.7	933.9	937.0	4.63	-4.57	2.13	
3,246.0	15.90	80.90	3,062.0	87.9	960.2	963.5	1.17	-1.17	0.11	
3,341.0	15.10	80.20	3,153.6	92.1	985.2	988.7	0.86	-0.84	-0.74	
3,435.0	14.40	84.90	3,244.5	95.2	1,008.9	1,012.6	1.47	-0.74	5.00	
3,530.0	13.30	84.90	3,336.7	97.2	1,031.6	1,035.3	1.16	-1.16	0.00	
3,624.0	12.90	84.60	3,428.3	99.2	1,052.8	1,056.6	0.43	-0.43	-0.32	
3,719.0	12.40	85.40	3,520.9	101.0	1,073.5	1,077.4	0.56	-0.53	0.84	
3,814.0	11.70	85.00	3,613.9	102.7	1,093.3	1,097.2	0.74	-0.74	-0.42	
3,908.0	11.20	86.00	3,706.0	104.1	1,111.9	1,115.8	0.57	-0.53	1.06	
4,003.0	10.90	84.30	3,799.2	105.7	1,130.0	1,134.0	0.47	-0.32	-1.79	
4,098.0	10.60	84.80	3,892.6	107.3	1,147.6	1,151.7	0.33	-0.32	0.53	
4,192.0	9.90	86.00	3,985.1	108.7	1,164.3	1,168.5	0.78	-0.74	1.28	
4,286.0	9.20	84.20	4,077.8	110.0	1,179.9	1,184.1	0.81	-0.74	-1.91	
4,381.0	9.00	84.80	4,171.6	111.5	1,194.8	1,199.1	0.23	-0.21	0.63	
4,475.0	8.90	84.20	4,264.4	112.9	1,209.4	1,213.7	0.15	-0.11	-0.64	
4,570.0	9.20	84.50	4,358.2	114.3	1,224.2	1,228.6	0.32	0.32	0.32	
4,664.0	9.90	90.60	4,450.9	115.0	1,239.8	1,244.2	1.31	0.74	6.49	
4,853.0	11.00	92.20	4,636.8	114.1	1,274.1	1,278.3	0.60	0.58	0.85	
4,948.0	10.70	91.20	4,730.1	113.6	1,291.9	1,296.2	0.37	-0.32	-1.05	
5,042.0	10.20	88.40	4,822.5	113.6	1,309.0	1,313.2	0.76	-0.53	-2.98	
5,137.0	10.00	88.10	4,916.1	114.1	1,325.6	1,329.8	0.22	-0.21	-0.32	

Company:	Caerus Oil and Gas LLC	Local Co-ordinate Reference:	Well NPR 24A-10 596
Project:	SEC.10-T5S-R96W	TVD Reference:	WELL @ 6733.0ft (Original Well Elev)
Site:	K10 596 Pad Sec.10-T5S-R96W	MD Reference:	WELL @ 6733.0ft (Original Well Elev)
Well:	NPR 24A-10 596	North Reference:	True
Wellbore:	NPR 24A-10 596 Wellbore #1	Survey Calculation Method:	Minimum Curvature
Design:	NPR 24A-10 596 Wellbore #1	Database:	US_EDM

Survey										
Measured Depth (ft)	Inclination (°)	Azimuth (°)	Vertical Depth (ft)	+N/-S (ft)	+E/-W (ft)	Vertical Section (ft)	Dogleg Rate (°/100usft)	Build Rate (°/100usft)	Turn Rate (°/100usft)	
5,231.0	9.60	88.60	5,008.7	114.6	1,341.6	1,345.8	0.44	-0.43	0.53	
5,326.0	9.60	89.70	5,102.4	114.8	1,357.5	1,361.7	0.19	0.00	1.16	
5,421.0	9.30	89.00	5,196.1	115.0	1,373.1	1,377.2	0.34	-0.32	-0.74	
5,515.0	8.90	90.70	5,288.9	115.0	1,387.9	1,392.1	0.51	-0.43	1.81	
5,609.0	8.30	92.70	5,381.8	114.6	1,402.0	1,406.1	0.71	-0.64	2.13	
5,704.0	8.30	92.20	5,475.8	114.0	1,415.7	1,419.8	0.08	0.00	-0.53	
5,798.0	7.70	91.60	5,568.9	113.6	1,428.8	1,432.8	0.64	-0.64	-0.64	
5,893.0	7.60	92.20	5,663.1	113.2	1,441.4	1,445.4	0.13	-0.11	0.63	
5,987.0	7.70	93.10	5,756.2	112.6	1,453.9	1,457.8	0.17	0.11	0.96	
6,082.0	7.50	93.90	5,850.4	111.8	1,466.4	1,470.3	0.24	-0.21	0.84	
6,176.0	6.80	89.40	5,943.7	111.5	1,478.1	1,482.0	0.95	-0.74	-4.79	
6,271.0	6.80	90.00	6,038.0	111.5	1,489.4	1,493.2	0.07	0.00	0.63	
6,365.0	6.60	90.90	6,131.4	111.5	1,500.3	1,504.1	0.24	-0.21	0.96	
6,460.0	4.90	85.40	6,225.9	111.7	1,509.8	1,513.7	1.88	-1.79	-5.79	
6,554.0	2.40	73.40	6,319.7	112.6	1,515.7	1,519.6	2.77	-2.66	-12.77	
6,649.0	1.30	44.30	6,414.6	113.9	1,518.4	1,522.3	1.49	-1.16	-30.63	
6,744.0	1.30	23.10	6,509.6	115.7	1,519.6	1,523.6	0.50	0.00	-22.32	
6,838.0	1.20	11.30	6,603.6	117.6	1,520.2	1,524.3	0.29	-0.11	-12.55	
6,933.0	0.90	6.50	6,698.6	119.3	1,520.5	1,524.7	0.33	-0.32	-5.05	
7,027.0	1.10	0.80	6,792.6	121.0	1,520.5	1,524.8	0.24	0.21	-6.06	
7,122.0	1.20	349.50	6,887.5	122.9	1,520.4	1,524.8	0.26	0.11	-11.89	
7,216.0	1.10	347.20	6,981.5	124.7	1,520.0	1,524.5	0.12	-0.11	-2.45	
7,311.0	1.10	348.00	7,076.5	126.5	1,519.6	1,524.2	0.02	0.00	0.84	
7,406.0	1.00	346.40	7,171.5	128.2	1,519.2	1,523.9	0.11	-0.11	-1.68	
7,500.0	0.80	342.10	7,265.5	129.6	1,518.8	1,523.6	0.22	-0.21	-4.57	
7,784.0	1.10	339.80	7,549.4	134.1	1,517.3	1,522.3	0.11	0.11	-0.81	
7,878.0	1.00	329.20	7,643.4	135.6	1,516.5	1,521.6	0.23	-0.11	-11.28	
Last Survey - 7878' MD										
7,973.0	1.10	329.80	7,738.4	137.1	1,515.7	1,520.8	0.11	0.11	0.63	
8,163.0	1.40	300.70	7,928.4	139.9	1,512.7	1,518.1	0.36	0.16	-15.32	
8,257.0	1.50	290.20	8,022.3	140.9	1,510.6	1,516.0	0.30	0.11	-11.17	
8,352.0	1.60	283.80	8,117.3	141.6	1,508.2	1,513.6	0.21	0.11	-6.74	
8,541.0	1.90	268.40	8,306.2	142.2	1,502.5	1,507.9	0.29	0.16	-8.15	
8,635.0	2.20	262.10	8,400.1	141.9	1,499.1	1,504.6	0.40	0.32	-6.70	
8,919.0	3.40	244.90	8,683.8	137.6	1,486.1	1,491.3	0.51	0.42	-6.06	
9,013.0	4.00	243.80	8,777.6	134.9	1,480.6	1,485.7	0.64	0.64	-1.17	
9,392.0	6.50	235.20	9,155.0	116.9	1,451.1	1,455.3	0.69	0.66	-2.27	
9,486.0	6.80	236.70	9,248.4	110.8	1,442.1	1,446.0	0.37	0.32	1.60	
9,581.0	6.50	234.50	9,342.7	104.6	1,433.0	1,436.6	0.41	-0.32	-2.32	
9,675.0	6.20	234.00	9,436.2	98.5	1,424.6	1,427.8	0.32	-0.32	-0.53	
9,730.0	6.20	235.90	9,490.8	95.1	1,419.7	1,422.8	0.37	0.00	3.45	
9,800.0	6.20	235.90	9,560.4	90.8	1,413.5	1,416.3	0.00	0.00	0.00	
BHL 1957'FSL, 1309'FEL, SEC.10										

Company:	Caerus Oil and Gas LLC	Local Co-ordinate Reference:	Well NPR 24A-10 596
Project:	SEC.10-T5S-R96W	TVD Reference:	WELL @ 6733.0ft (Original Well Elev)
Site:	K10 596 Pad Sec.10-T5S-R96W	MD Reference:	WELL @ 6733.0ft (Original Well Elev)
Well:	NPR 24A-10 596	North Reference:	True
Wellbore:	NPR 24A-10 596 Wellbore #1	Survey Calculation Method:	Minimum Curvature
Design:	NPR 24A-10 596 Wellbore #1	Database:	US_EDM

Design Targets										
Target Name	Dip Angle	Dip Dir.	TVD	+N/-S	+E/-W	Northing	Easting	Latitude	Longitude	
- hit/miss target	(°)	(°)	(ft)	(ft)	(ft)	(usft)	(usft)			
- Shape										
SHL 1881'FSL, 2516'FW - survey hits target center - Point	0.00	0.00	1.0	0.0	0.0	14,403,104.74	2,441,496.47	39.627517	-108.155214	
BHL 1957'FSL, 1309'FEI - survey misses target center by 26.4ft at 9800.0ft MD (9560.4 TVD, 90.8 N, 1413.5 E) - Ellipse (radii L200.0 W100.0 on 250.00 azi)	0.00	0.00	9,563.0	76.9	1,435.8	14,403,227.12	2,442,929.54	39.627728	-108.150117	

Survey Annotations					
Measured Depth	Vertical Depth	Local Coordinates		Comment	
(ft)	(ft)	+N/-S (ft)	+E/-W (ft)		
7,878.0	7,643.4	135.6	1,516.5	Last Survey - 7878' MD	

Checked By: _____ Approved By: _____ Date: _____