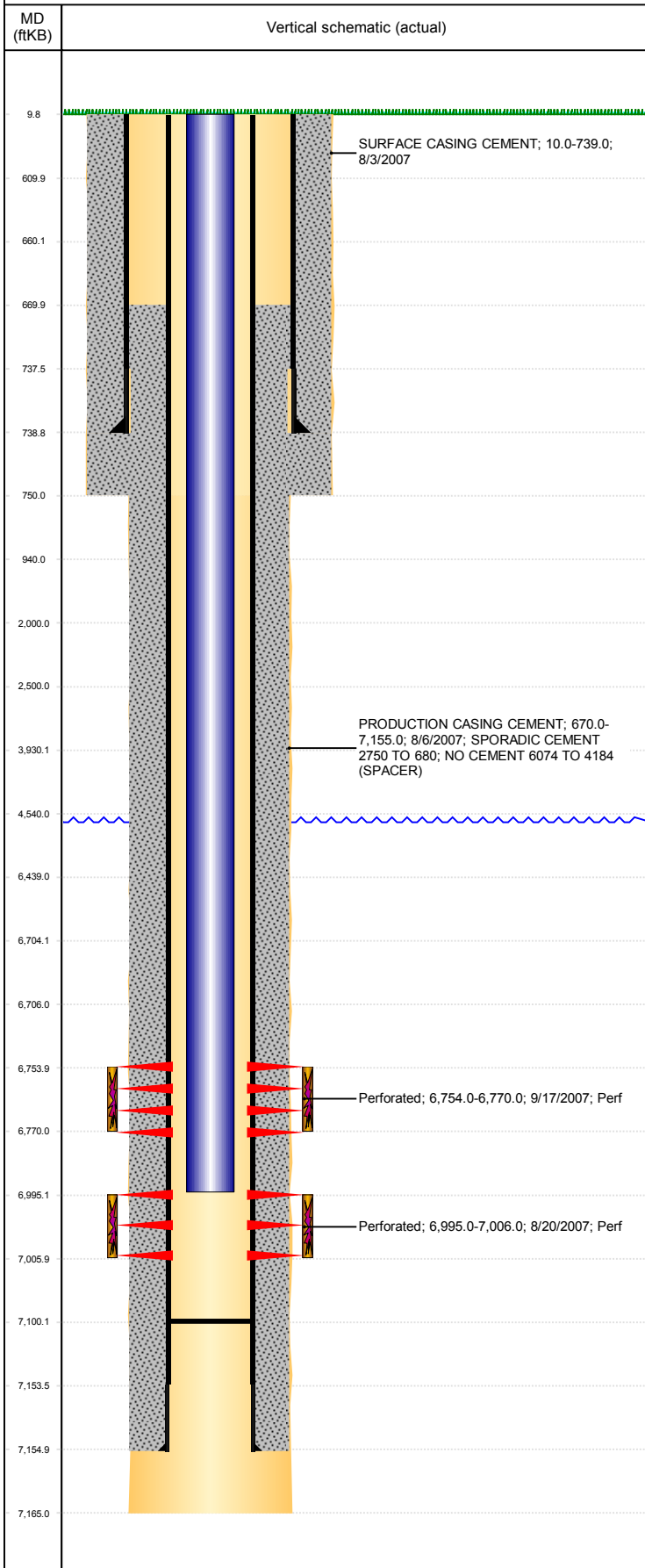


Well Name: SPIKE STATE D28-13

VERTICAL - ORIGINAL HOLE, 10/11/2018 11:54:35 AM



Well Header

API 05-123-25095	Business Unit DJ BASIN	District 15	Well Config VERTICAL
KB - GL / MSL (ft... 10.00	Spud Date 8/2/2007	P & A Date	Well Production Status PR
SoRT No			
Comment			

Surface Location (Congressional)

Qtr 3 SW	Qtr 4 SW	Section 28	Twnshp 3	Twnsh... N	Range 64	Rng E... W	Actual Latitude (") 40.19045504	Actual Longitude (") -104.56343272
-------------	-------------	---------------	-------------	---------------	-------------	---------------	------------------------------------	---------------------------------------

Wellbore Sections

Section Des	Size (in)	Act Top, MD (ftKB)	Act Btm, MD (ftKB)
SURFACE	12 1/4	10	750
PRODUCTION	7 7/8	750	7,165

Casing Strings

Csg Des	Run Date	OD (in)	Wt/Len (lb/ft)	Grade	Top, MD (ftKB)	MD (ftKB)
Surface	8/3/2007	8 5/8	24.00	?	10.0	739.0
Production	8/6/2007	4 1/2	11.60	M-80	10.0	7,155.0

Cement

Des	Start Date	Top (ftKB)	Btm (ftKB)
SURFACE CASING CEMENT	8/3/2007	10.0	739.0
PRODUCTION CASING CEMENT	8/6/2007	670.0	7,155.0

Zone Statuses

Zone Name	Status Date	Status	Fluid Type	Job	Prod Method
CODELL	11/13/2007	PR		DRILLING/COMPLETION - ORIGINAL, 8/2/2007...	
NIORARA	11/13/2007	PR		DRILLING/COMPLETION - ORIGINAL, 8/2/2007...	

Perforation Data

Linked Zone	Bnch/Stg	Entered Shot Total	Top (ftKB)	Btm (ftKB)	Date
NIORARA, ORIGINAL HOLE	B	64	6,754.00	6,770.00	9/17/2007
CODELL, ORIGINAL HOLE		44	6,995.00	7,006.00	8/20/2007

Stimulation Intervals

Zone	Start Date	Top (ftKB)	Btm (ftKB)
NIORARA, ORIGINAL HOLE	9/24/2007	6,754.0	6,770.0
CODELL, ORIGINAL HOLE	9/5/2007	6,995.0	7,006.0

Other In Hole

Run Date	Des	OD (in)	Top (ftKB)	Btm (ftKB)

Logs

Date	Type	Top, MD (ftKB)	Btm, MD (ftKB)
8/6/2007	COMPENSATED DENSITY	2,750.0	7,137.0
8/6/2007	INDUCTION	740.0	7,157.0
8/14/2007	CBL/CCL/GR	520.0	7,106.0
4/7/2011	GYRO	10.0	6,900.0

Plug Back Total Depths

Date	Type	Com	Depth (ftKB)
8/14/2007	FILL	DEPTH LOGGER ON CBL	7,113.0
1/15/2008	PLUG REMNANTS	DRILL AND PUSH TO 7100'	7,100.0