

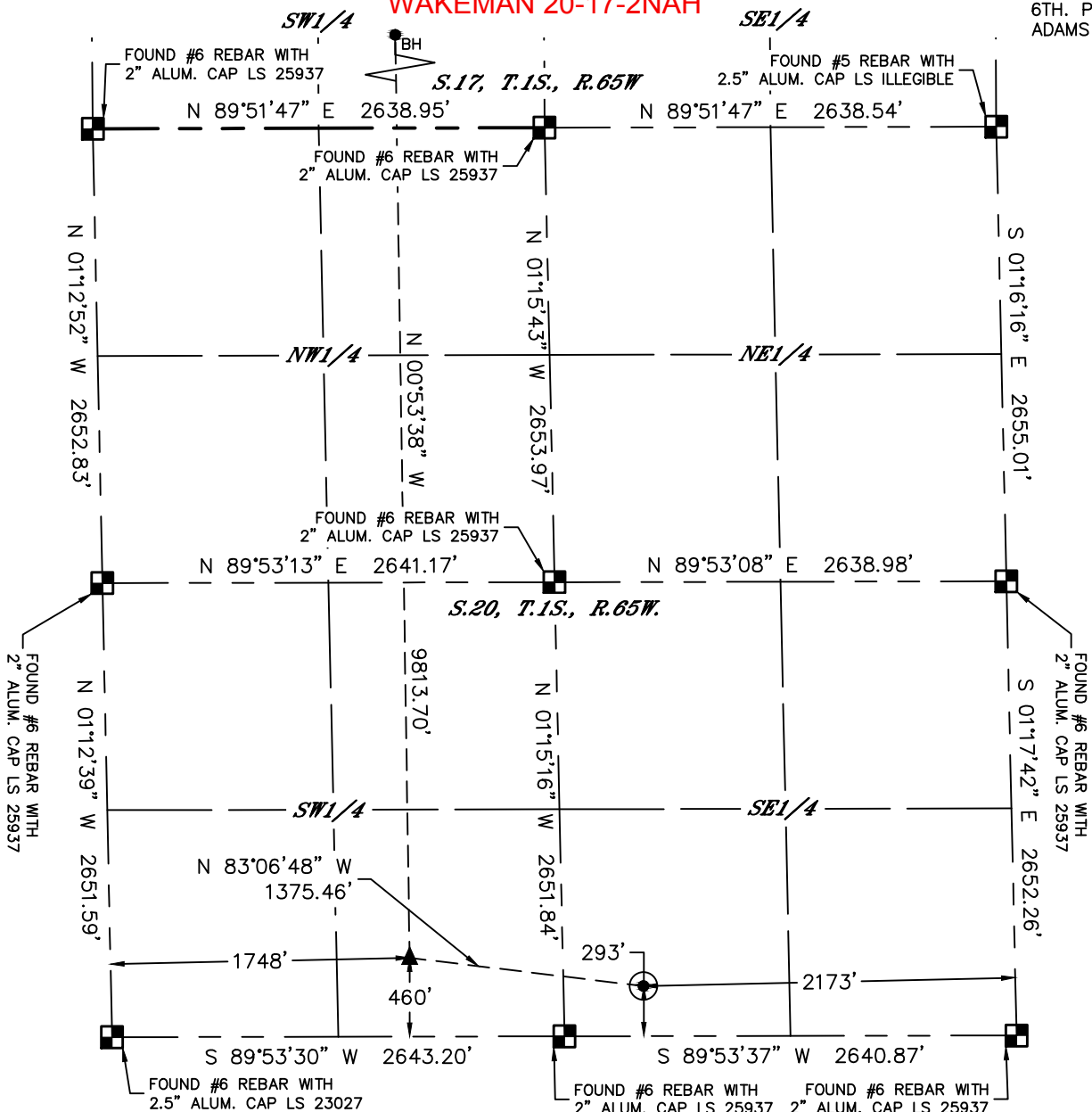


Lat40°, Inc. 6250 W. 10th Street, Unit 2, Greeley, CO 970-515-5294

WELL LOCATION CERTIFICATE

WAKEMAN 20-17-2NAH

SECTION: 20
TOWNSHIP: 1S
RANGE: 65W
6TH. P.M.
ADAMS COUNTY, CO

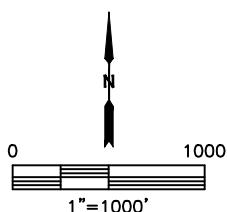


LEGEND

- = ALIQUOT MONUMENT AS DESCRIBED
- = CALCULATED POSITION
- = SURFACE HOLE LOCATION (SHL)
- ▲ = ENTRY POINT LOCATION (EP)
- ◆ = FIRST PERF. POINT (FPP)
- BH = BOTTOM HOLE LOCATION (BHL)

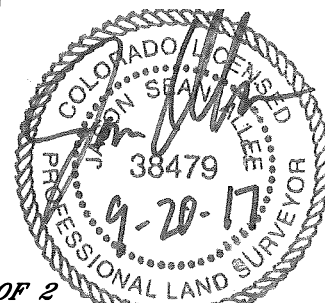
CLIENT: PETROSHARE						LANDMAN: BILL LLOYD			
INSTRUMENT OPERATOR: SCOTT SHERARD						SURVEY DATE: 9/8/2017		SURFACE USE: RANGELAND	
SHL FOOTAGE				SHL LAT °	SHL LONG °	SHL PDOP	SHL ELEV	SHL 1/4/1/4	SHL S-T-R
293	FSL	2173	FEL	39.94406	-104.68607	2.1	5197	SWSE	20-1S-65

BHL FOOTAGE				BHL LAT °	BHL LONG °	BHL S-T-R	EP LAT °	EP LONG °	EP S-T-R
355	FNL	1748	FWL	39.97148	-104.69116	17-1S-65	39.94455	-104.69093	20-1S-65



NOTE:

- 1) Bearings shown are Grid Bearings of the Colorado State Plane Coordinate System, North Zone, North American Datum 1983. The lineal dimensions as contained herein are based upon the "U.S. Survey Foot."
- 2) Distances to section lines measured at 90 degrees from said section lines.
- 3) Ground elevations are based on an observed GPS elevation (NAVD 1988 DATUM).
- 4) Latitude and Longitude shown are (NAD 83 DATUM).
- 5) IMPROVEMENTS: See LOCATION DRAWING for all visible improvements within 500' of oil and gas location.
- 6) This map does not represent a boundary survey.



SHEET 1 OF 2

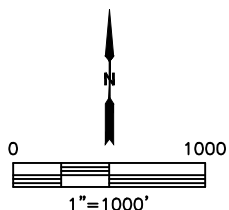
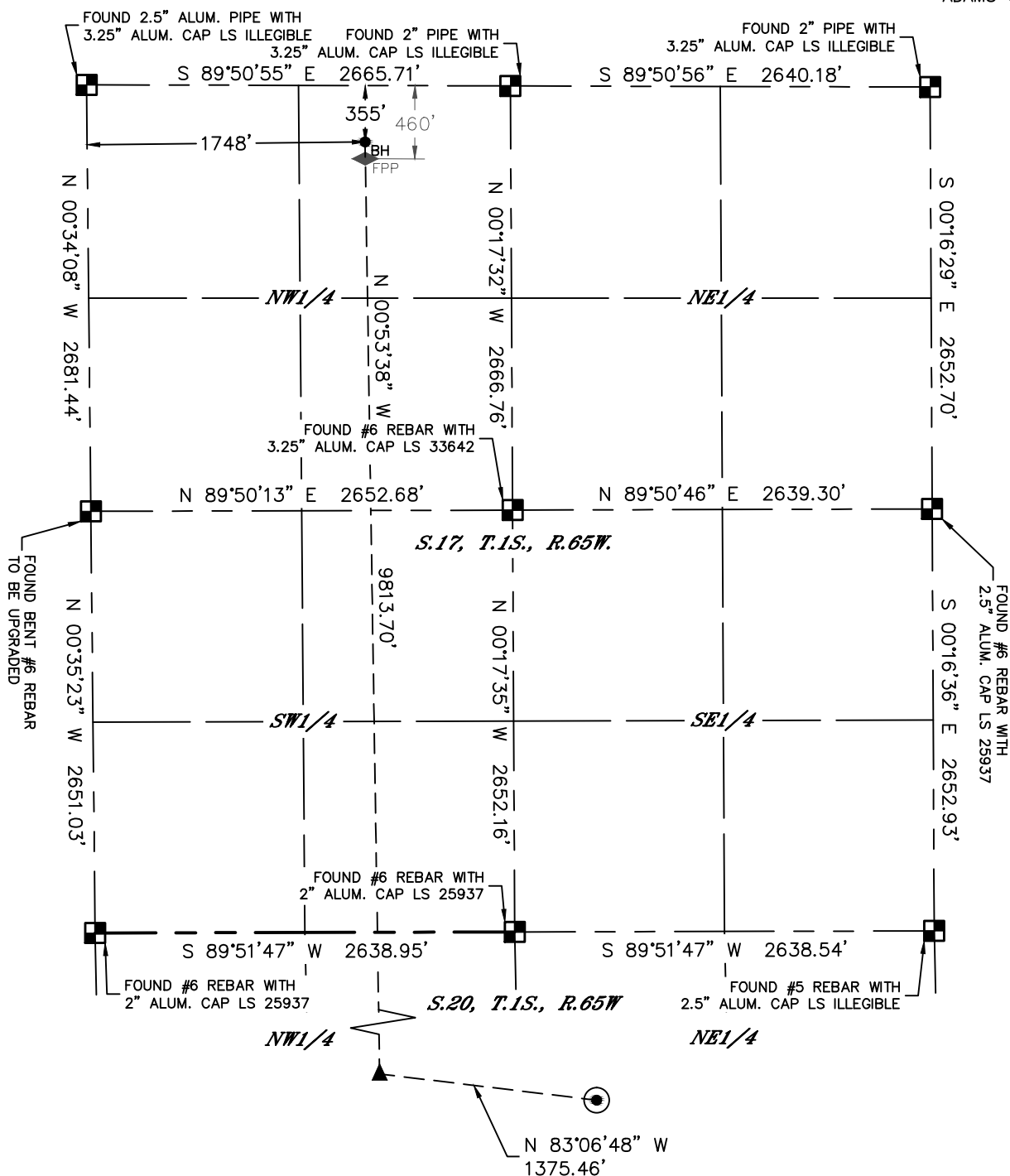
Jason S. Allee—On behalf of Lat40°, Inc.
Colorado Licensed Professional Land Surveyor No. 38479
DATE: 9/20/2017
PROJECT#: 2017113

Lat40°, Inc. 6250 W. 10th Street, Unit 2, Greeley, CO 970-515-5294

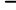





WELL LOCATION CERTIFICATE

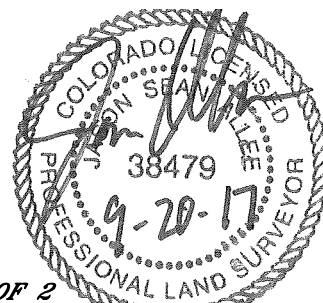
WAKEMAN 20-17-2NAH

SECTION: 20
TOWNSHIP: 1S
RANGE: 65W
6TH. P.M.
ADAMS COUNTY, CO



LEGEND

-  = ALIQUOT MONUMENT AS DESCRIBED
 = CALCULATED POSITION
 = SURFACE HOLE LOCATION (SHL)
 = ENTRY POINT LOCATION (EP)
 = FIRST PERF. POINT (FPP)
 = BOTTOM HOLE LOCATION (BHL)



SHEET 2 OF 2

Jason S. Allee—On behalf of Lat40, Inc.
Colorado Licensed Professional Land Surveyor No. 38479 DATE: 9/20/2017
PROJECT#: 2017113