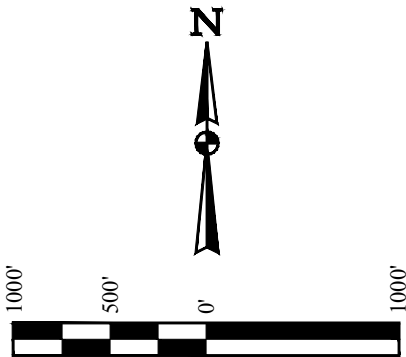
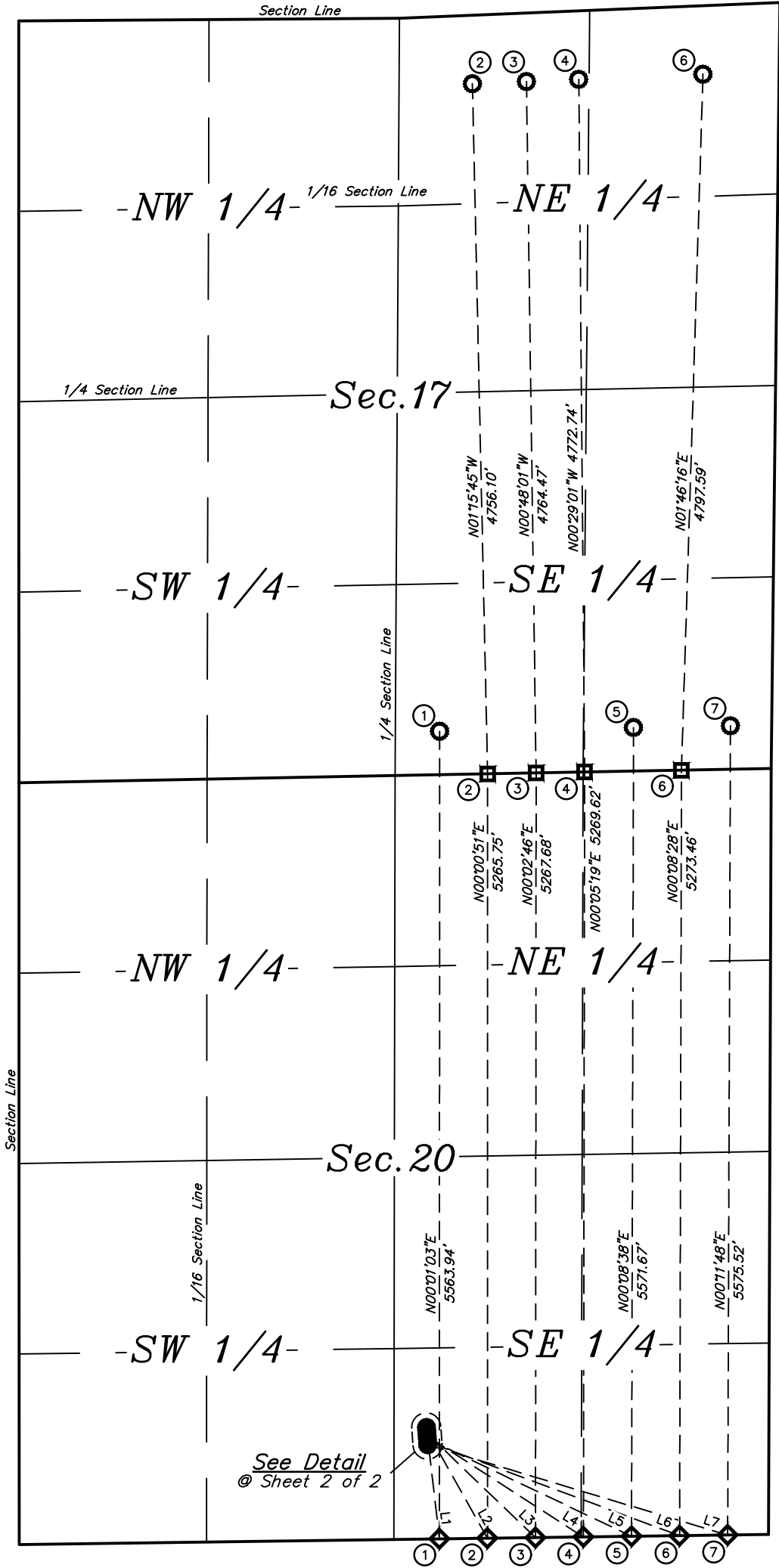


LEGEND:

- 90° SYMBOL
- PROPOSED WELLHEAD.
- TARGET 1 LOCATION.
- MID-LATERAL TARGET.
- TARGET BOTTOM HOLE.



LINE TABLE		
LINE	DIRECTION	LENGTH
L1	S06°33'16"E	773.00'
L2	S29°20'10"E	852.95'
L3	S46°06'25"E	1037.34'
L4	S57°09'07"E	1281.02'
L5	S64°30'10"E	1557.54'
L6	S69°34'50"E	1851.86'
L7	S73°14'43"E	2156.71'



REV: 1 08-01-18 K.M.R (WELL NAME CHANGE)

Sheet 1 of 2

#	WELL NAME	SHL	FOOTAGE	SHL LAT (NAD 83)	SHL LONG (NAD 83)	SHL PDOP	SHL ELEV.	SHL 1/4 1/4
1	ANTELOPE FEDERAL O34-K31-20HNB	769'	FSL 2357'	FEL N 40.379981°	W 104.346621°	1.4	4657.2'	SWSE
2	ANTELOPE FEDERAL 34-20-17XRLNC	749'	FSL 2356'	FEL N 40.379926°	W 104.346616°	1.5	4656.6'	SWSE
3	ANTELOPE FEDERAL T34-20-17XRLNB	729'	FSL 2354'	FEL N 40.379872°	W 104.346612°	1.5	4656.0'	SWSE
4	ANTELOPE FEDERAL T-20-17XRLNC	709'	FSL 2353'	FEL N 40.379817°	W 104.346608°	1.4	4655.6'	SWSE
5	ANTELOPE FEDERAL T44-P41-20HNB	689'	FSL 2351'	FEL N 40.379762°	W 104.346603°	1.4	4655.2'	SWSE
6	ANTELOPE FEDERAL 44-20-17XRLNC	669'	FSL 2350'	FEL N 40.379707°	W 104.366599°	1.4	4654.9'	SWSE
7	ANTELOPE FEDERAL Y44-U41-20HNB	649'	FSL 2348'	FEL N 40.379652°	W 104.346595°	1.4	4654.8'	SWSE

BONANZA CREEK ENERGY  
OPERATING COMPANY, LLC

ANTELOPE O-20 PAD  
SW 1/4 SE 1/4, SECTION 20, T5N, R62W, 6th P.M.  
WELD COUNTY, COLORADO

SURVEYED BY	CHAD MEIERS, O.R.	06-21-18	SCALE
DRAWN BY	J.U.	07-13-18	1" = 1000'

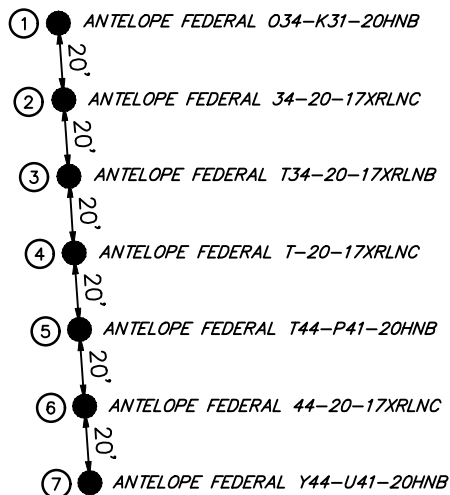
MULTI-WELL PLAN



UELS, LLC  
Corporate Office \* 85 South 200 East  
Vernal, UT 84078 \* (435) 789-1017

# LEGEND:

● = PROPOSED WELLHEAD



REV: 1 08-01-18 K.M.R (WELL NAME CHANGE)

Sheet 2 of 2

#	WELL NAME	SHL FOOTAGE			SHL LAT (NAD 83)	SHL LONG (NAD 83)	SHL PDOP	SHL ELEV.	SHL 1/4 1/4
1	ANTELOPE FEDERAL 034-K31-20HNB	769'	FSL	2357'	FEL	N 40.379981°	W 104.346621°	1.4	4657.2' SWSE
2	ANTELOPE FEDERAL 34-20-17XRLNC	749'	FSL	2356'	FEL	N 40.379926°	W 104.346616°	1.5	4656.6' SWSE
3	ANTELOPE FEDERAL T34-20-17XRLNB	729'	FSL	2354'	FEL	N 40.379872°	W 104.346612°	1.5	4656.0' SWSE
4	ANTELOPE FEDERAL T-20-17XRLNC	709'	FSL	2353'	FEL	N 40.379817°	W 104.346608°	1.4	4655.6' SWSE
5	ANTELOPE FEDERAL T44-P41-20HNB	689'	FSL	2351'	FEL	N 40.379762°	W 104.346603°	1.4	4655.2' SWSE
6	ANTELOPE FEDERAL 44-20-17XRLNC	669'	FSL	2350'	FEL	N 40.379707°	W 104.366599°	1.4	4654.9' SWSE
7	ANTELOPE FEDERAL Y44-U41-20HNB	649'	FSL	2348'	FEL	N 40.379652°	W 104.346595°	1.4	4654.8' SWSE

## BONANZA CREEK ENERGY OPERATING COMPANY, LLC

ANTELOPE O-20 PAD  
SW 1/4 SE 1/4, SECTION 20, T5N, R62W, 6th P.M.  
WELD COUNTY, COLORADO



UELS, LLC  
Corporate Office \* 85 South 200 East  
Vernal, UT 84078 \* (435) 789-1017

SURVEYED BY	CHAD MEIERS, O.R.	06-21-18	SCALE
DRAWN BY	J.U.	07-13-18	1" = 50'
MULTI-WELL PLAN			