



410 17th Street, Suite 1400
Denver, CO 80202
(720) 440-6100 phone
(720) 305-0804 fax

Bonanzacrk.com

October 5, 2018

State of Colorado
Oil and Gas Conservation Commission
1120 Lincoln Street, Suite 801
Denver, CO 80203

RE: Proposed Wellbore Spacing Unit
Antelope Federal T34-20-17XRLNB
Niobrara New Drill
SWSE Section 20, Township 5N, Range 62W, 6th PM
Weld County, Colorado

Dear Director Murphy,

Bonanza Creek Energy Operating Company, LLC. ("Bonanza Creek") is planning to drill the above captioned well in accordance with the provisions of Colorado Oil and Gas Conservation Commission (COGCC) Rule 318A.e.

Bonanza Creek's proposed wellbore spacing unit consists of:

Township 5N, Range 62W (Weld County):

Section 17: E2
Section 20: E2
Section 29: N2NE

Total acres: 720ac

The 30 day notification time period has passed and we have not yet received any objections to such well locations or proposed spacing unit, therefore Bonanza Creek hereby requests the Director to approve the above mentioned well. Bonanza Creek respectfully requests the COGCC review the enclosed map illustrating the proposed wellbore spacing unit.

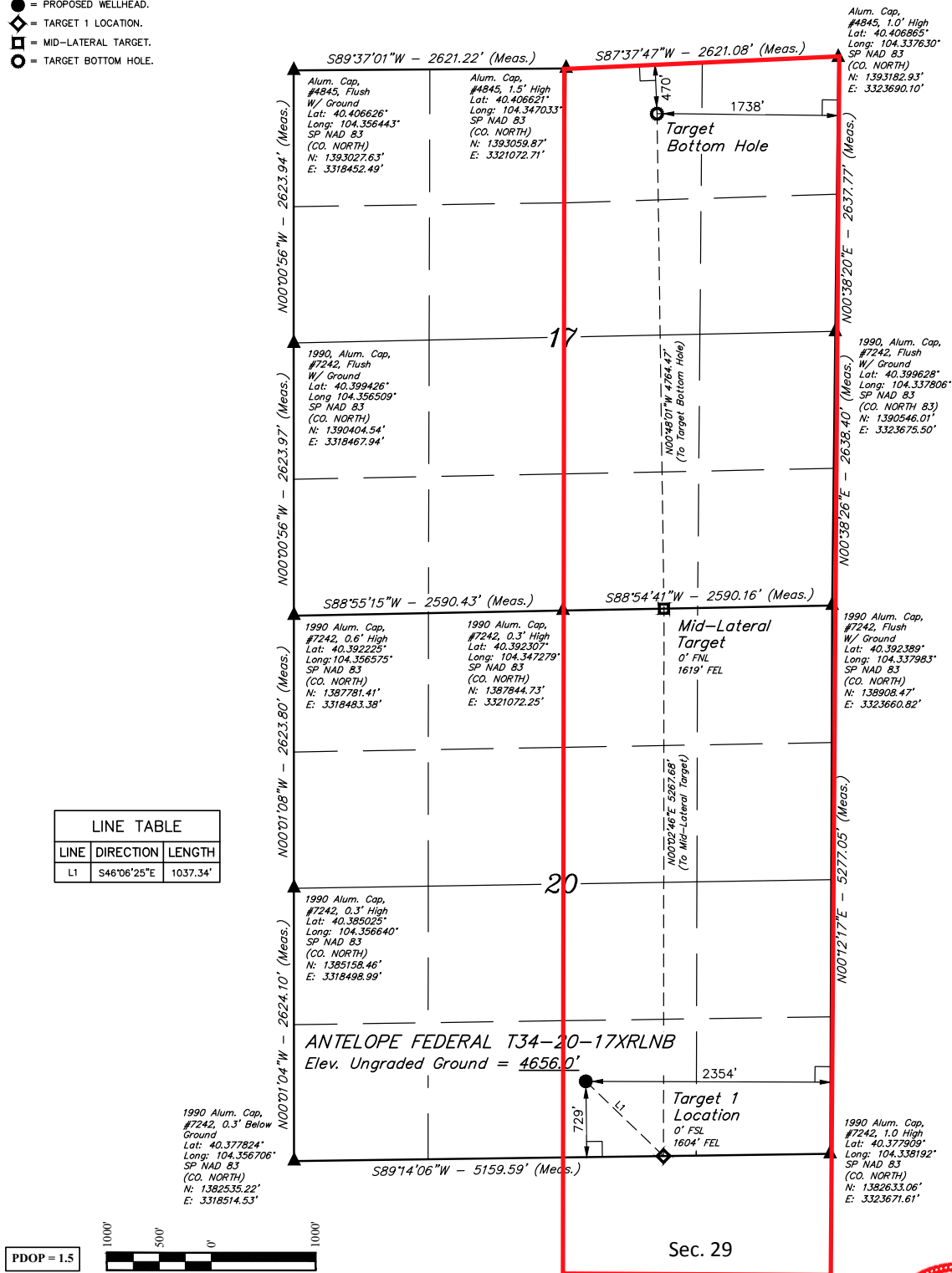
Regards,
Bonanza Creek Energy Operating Company, LLC.

Brian Dodek, P.G.
Manager – Environmental & Regulatory Compliance

LEGEND:

- = 90° SYMBOL
- = PROPOSED WELLHEAD.
- ◆ = TARGET 1 LOCATION.
- = MID-LATERAL TARGET.
- = TARGET BOTTOM HOLE.

T5N, R62W, 6th P.M.



NAD 83 (SURFACE LOCATION)	NAD 83 (TARGET 1 LOCATION)
LATITUDE = 40°22'47.54" (40.379872°)	LATITUDE = 40°22'40.38" (40.377883°)
LONGITUDE = 104°20'47.80" (104.346612°)	LONGITUDE = 104°20'38.22" (104.343949°)
STATE PLANE NAD 83 (CO. NORTH)	STATE PLANE NAD 83 (CO. NORTH)
N: 1383317.40' E: 3321316.82'	N: 1382602.64' E: 3322068.16'
NAD 83 (MID-LATERAL TARGET)	NAD 83 (TARGET BOTTOM HOLE)
LATITUDE = 40°23'32.42" (40.392338°)	LATITUDE = 40°24'19.48" (40.405412°)
LONGITUDE = 104°20'37.66" (104.343793°)	LONGITUDE = 104°20'38.06" (104.343905°)
STATE PLANE NAD 83 (CO. NORTH)	STATE PLANE NAD 83 (CO. NORTH)
N: 1387868.63' E: 3322042.81'	N: 1392630.72' E: 3321949.55'

CERTIFICATE OF SURVEY

THIS IS TO CERTIFY THAT THE ABOVE INFORMATION WAS PREPARED BY ME OR UNDER MY SUPERVISION AND THAT THE SAME ARE TRUE AND CORRECT TO THE BEST OF MY KNOWLEDGE AND BELIEF.

REGISTERED LAND SURVEYOR
 REGISTRATION NO. 28285
 STATE OF COLORADO
 06-21-18