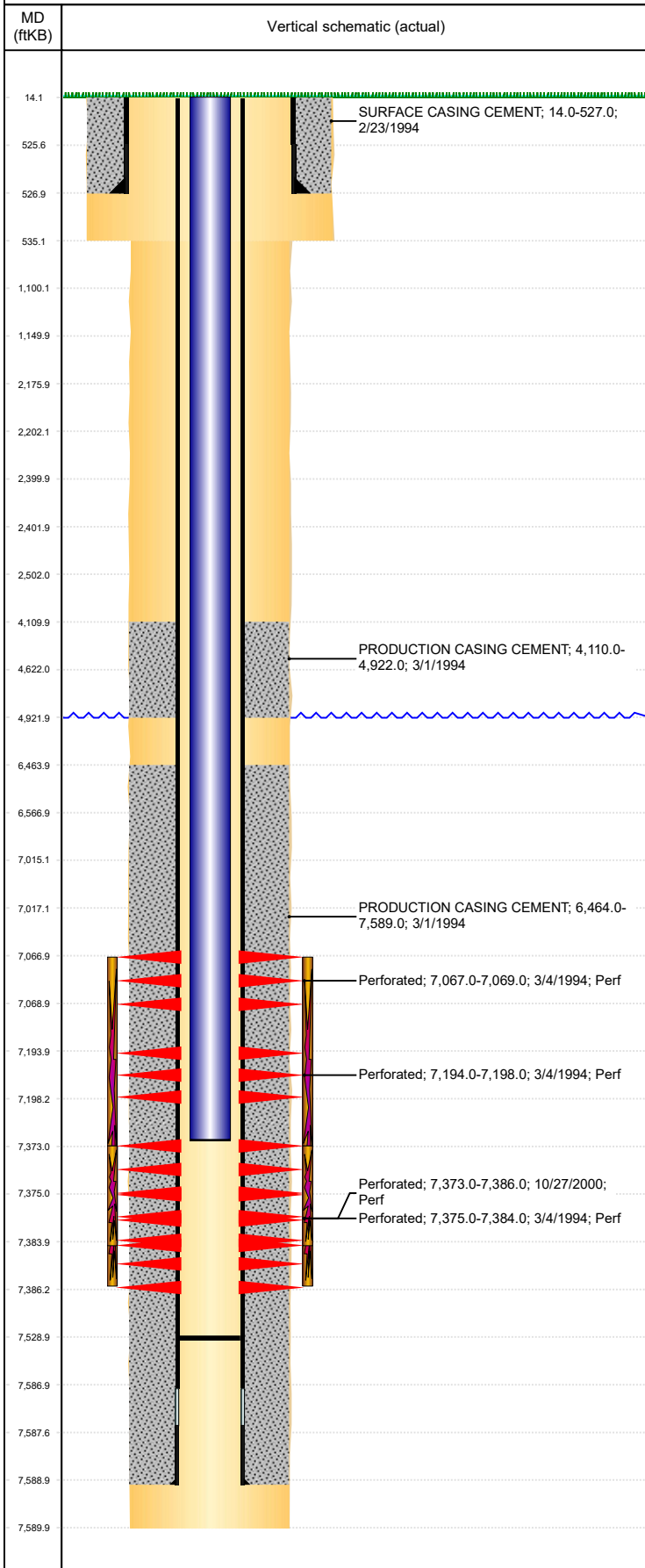


Well Name: KAMMERZELL 29-06H6

VERTICAL - ORIGINAL HOLE, 10/18/2018 10:39:07 AM



Well Header									
API 05-123-17940		Business Unit DJ BASIN			District 15		Well Config VERTICAL		
KB - GL / MSL (ft... 14.00		Spud Date 2/23/1994		P & A Date		Well Production Status PR			SoRT No
Comment DISCREPANCY IN TD DATE, DRL RPT 3/1/94, ST RPT 2/28/94; USED DRL RPT DATE LIMITED ENTRY. NO FORM 5A SUBMITTED TO STATE FOR CD REFRAC.									
Surface Location (Congressional)									
Qtr 3 SE	Qtr 4 NW	Section 29	Twnshp 5	Twnsh... N	Range 66	Rng E/... W	Actual Latitude (°) 40.37265426	Actual Longitude (°) -104.80493694	
Wellbore Sections									
Section Des			Size (in)			Act Top, MD (ftKB)		Act Btm, MD (ftKB)	
SURFACE			12 1/4			14		535	
PRODUCTION			7 7/8			535		7,590	
Casing Strings									
Csg Des		Run Date		OD (in)	Wt/Len (lb/ft)	Grade	Top, MD (ftKB)	MD (ftKB)	
Surface		2/23/1994		8 5/8	23.00		14.0	527.0	
Production		3/1/1994		3 1/2	7.70	B-70	14.0	7,589.0	
Cement									
Des				Start Date		Top (ftKB)		Btm (ftKB)	
SURFACE CASING CEMENT				2/23/1994		14.0		527.0	
PRODUCTION CASING CEMENT				3/1/1994		4,110.0		4,922.0	
PRODUCTION CASING CEMENT				3/1/1994		6,464.0		7,589.0	
Zone Statuses									
Zone Name	Status Date	Status	Fluid Type	Job				Prod Method	
CODELL	11/14/2000	PR		RE-FRAC, 11/8/2000 00:00				Flowing	
CODELL	12/27/2006	PR		TRI-FRAC, 10/30/2006 00:00				Flowing	
NIOBRARA	3/16/1994	PR		DRILLING/COMPLETION - ORIGINAL, 2/23/1994...				Flowing	
Perforation Data									
Linked Zone		Bnch/Stg	Entered Shot Total	Top (ftKB)		Btm (ftKB)		Date	
NIOBRARA, ORIGINAL HOLE			2	7,067.00		7,069.00		3/4/1994	
NIOBRARA, ORIGINAL HOLE			4	7,194.00		7,198.00		3/4/1994	
CODELL, ORIGINAL HOLE			52	7,373.00		7,386.00		10/27/2000	
CODELL, ORIGINAL HOLE			9	7,375.00		7,384.00		3/4/1994	
Stimulation Intervals									
Zone			Start Date			Top (ftKB)		Btm (ftKB)	
NIOBRARA-CODELL, ORIGINAL HOLE			3/8/1994			7,067.0		7,384.0	
CODELL, ORIGINAL HOLE			11/8/2000			7,373.0		7,386.0	
CODELL, ORIGINAL HOLE			10/30/2006			7,373.0		7,384.0	
Other In Hole									
Run Date		Des				OD (in)	Top (ftKB)	Btm (ftKB)	
Logs									
Date		Type				Top, MD (ftKB)		Btm, MD (ftKB)	
3/1/1994		COMPENSATED DENSITY				2,640.0		7,588.0	
3/1/1994		INDUCTION				538.0		7,588.0	
3/3/1994		CEMENT BOND				3,922.0		7,524.0	
Plug Back Total Depths									
Date		Type		Com				Depth (ftKB)	
3/3/1994		FILL		DEPTH LOGGER ON CBL				7,528.0	
11/1/2006		FILL		CIRCULATE CLEAN TO 7529'				7,529.0	