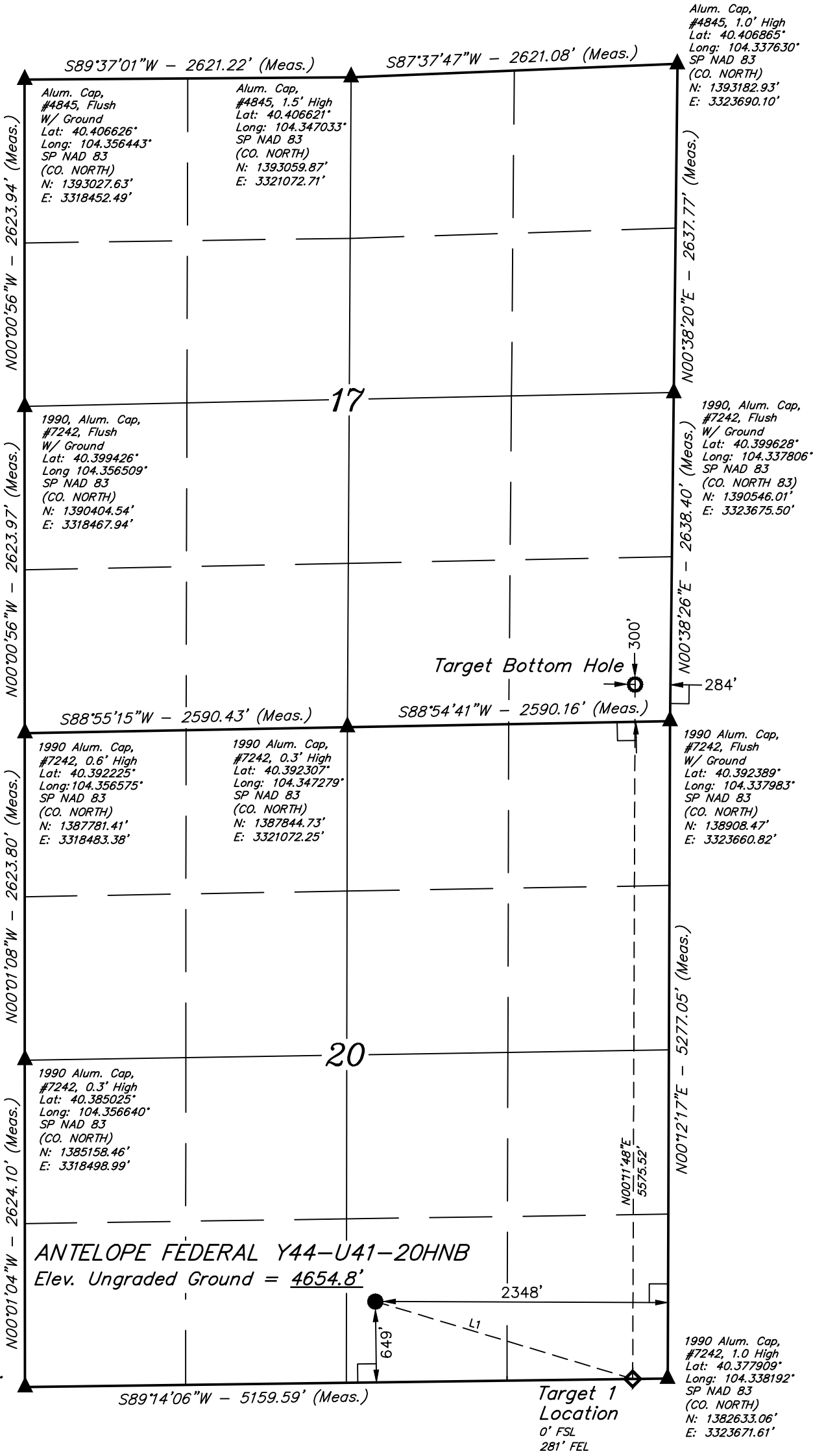


LEGEND:

- └─ = 90° SYMBOL
● = PROPOSED WELLHEAD.
◆ = TARGET 1 LOCATION.
○ = TARGET BOTTOM HOLE.

T5N, R62W, 6th P.M.

LINE TABLE		
LINE	DIRECTION	LENGTH
L1	S73°14'43"E	2156.71'



PDOP = 1.4

NAD 83 (SURFACE LOCATION)	NAD 83 (TARGET 1 LOCATION)
LATITUDE = 40°22'46.75" (40.379652°)	LATITUDE = 40°22'40.46" (40.377904°)
LONGITUDE = 104°20'47.74" (104.346595°)	LONGITUDE = 104°20'21.12" (104.339201°)
STATE PLANE NAD 83 (CO. NORTH)	STATE PLANE NAD 83 (CO. NORTH)
N: 1383237.65' E: 3321322.73'	N: 1382627.73' E: 3323390.71'
	NAD 83 (TARGET BOTTOM HOLE)
	LATITUDE = 40°23'35.53" (40.393204°)
	LONGITUDE = 104°20'20.34" (104.338983°)
	STATE PLANE NAD 83 (CO. NORTH)
	N: 1388201.52' E: 3323378.53'

CERTIFICATE
THIS IS TO CERTIFY THAT THE ABOVE PLAT WAS PREPARED FROM FIELD NOTES OF ACTUAL SURVEYS MADE BY ME OR UNDER MY SUPERVISION AND THAT THE SAME ARE TRUE AND CORRECT TO THE BEST OF MY KNOWLEDGE AND BELIEF.

CHAD MEIERS, O.R.
REGISTERED LAND SURVEYOR
REGISTRATION NO. 28285
STATE OF COLORADO
08-01-18

REV: 1 08-01-18 K.M.R. (WELL NAME CHANGE)

BASIS OF BEARINGS
TRANSVERSE MERCATOR PROJECTION WITH
A CENTRAL MERIDIAN OF W105°00'00".
BASIS OF ELEVATION
OPUS SOLUTION GENERATED NAVD 88



UELS, LLC
Corporate Office * 85 South 200 East
Vernal, UT 84078 * (435) 789-1017



BONANZA CREEK ENERGY
OPERATING COMPANY, LLC

ANTELOPE FEDERAL Y44-U41-20HNB
SW 1/4 SE 1/4, SECTION 20, T5N, R62W, 6th P.M.
WELD COUNTY, COLORADO

SURVEYED BY	CHAD MEIERS, O.R.	06-21-18	SCALE
DRAWN BY	J.U.	07-13-18	1" = 1000'

WELL LOCATION PLAT