



410 17th Street, Suite 1400
Denver, CO 80202
(720) 440-6100 phone
(720) 305-0804 fax

Bonanzacrk.com

October 5, 2018

State of Colorado
Oil and Gas Conservation Commission
1120 Lincoln Street, Suite 801
Denver, CO 80203

RE: Proposed Wellbore Spacing Unit
Antelope Federal Y44-U41-20HNB
Niobrara New Drill
SWSE Section 20, Township 5N, Range 62W, 6th PM
Weld County, Colorado

Dear Director Murphy,

Bonanza Creek Energy Operating Company, LLC. ("Bonanza Creek") is planning to drill the above captioned well in accordance with the provisions of Colorado Oil and Gas Conservation Commission (COGCC) Rule 318A.e.

Bonanza Creek's proposed wellbore spacing unit consists of:

Township 5N, Range 62W (Weld County):

Section 16: SWSW
Section 17: SESE
Section 20: E2E2
Section 21: W2W2
Section 28: NWNW
Section 29: NENE

Total acres: 480ac

The 30 day notification time period has passed and we have not yet received any objections to such well locations or proposed spacing unit, therefore Bonanza Creek hereby requests the Director to approve the above mentioned well. Bonanza Creek respectfully requests the COGCC review the enclosed map illustrating the proposed wellbore spacing unit.

Regards,
Bonanza Creek Energy Operating Company, LLC.

Brian Dodek, P.G.
Manager – Environmental & Regulatory Compliance

LEGEND:

- 90° SYMBOL
- PROPOSED WELLHEAD.
- TARGET 1 LOCATION.
- TARGET BOTTOM HOLE.

T5N, R62W, 6th P.M.

LINE TABLE		
LINE	DIRECTION	LENGTH
L1	S73°14'43"E	2156.71'

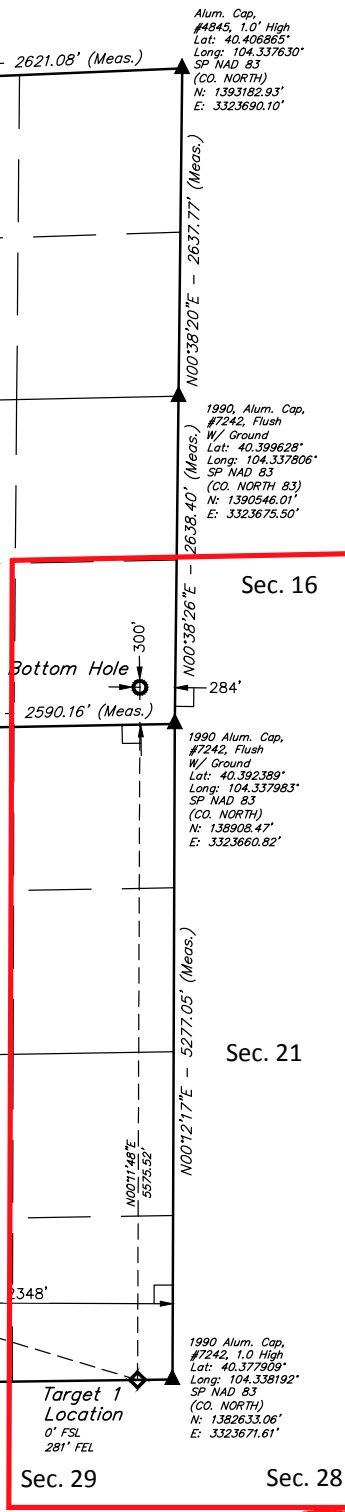
PDOP = 1.4

NAD 83 (SURFACE LOCATION)	NAD 83 (TARGET 1 LOCATION)
LATITUDE = 40°22'46.75" (40.379652°)	LATITUDE = 40°22'40.46" (40.377904°)
LONGITUDE = 104°20'47.74" (104.346595°)	LONGITUDE = 104°20'21.12" (104.339201°)
STATE PLANE NAD 83 (CO. NORTH)	STATE PLANE NAD 83 (CO. NORTH)
N: 1383237.65' E: 3321322.73'	N: 1382627.73' E: 3323390.71'
	NAD 83 (TARGET BOTTOM HOLE)
	LATITUDE = 40°23'35.53" (40.393204°)
	LONGITUDE = 104°20'20.34" (104.338983°)
	STATE PLANE NAD 83 (CO. NORTH)
	N: 1388201.52' E: 3323378.53'

BASIS OF BEARINGS
TRANSVERSE MERCATOR PROJECTION WITH
A CENTRAL MERIDIAN OF W105°00'00".
BASIS OF ELEVATION
OPUS SOLUTION GENERATED NAVD 88



UELS, LLC
Corporate Office * 85 South 200 East
Vernal, UT 84078 * (435) 789-1017



CERTIFICATE OF REGISTRATION
THIS IS TO CERTIFY THAT THE ABOVE IS A TRUE AND CORRECT COPY OF THE ORIGINAL SURVEY AND NOTES OF ACTUAL SURVEYS MADE BY ME OR UNDER MY SUPERVISION AND THAT THE SAME ARE TRUE AND CORRECT TO THE BEST OF MY KNOWLEDGE AND BELIEF.
REGISTERED LAND SURVEYOR
REGISTRATION NO. 28285
STATE OF COLORADO
K.M.R. 08-01-18

REV: 1 08-01-18 K.M.R. (WELL NAME CHANGE)

BONANZA CREEK ENERGY
OPERATING COMPANY, LLC

ANTELOPE FEDERAL Y44-U41-20HNB
SW 1/4 SE 1/4, SECTION 20, T5N, R62W, 6th P.M.
WELD COUNTY, COLORADO

SURVEYED BY	CHAD MEIERS, O.R.	06-21-18	SCALE
DRAWN BY	J.U.	07-13-18	1" = 1000'

WELL LOCATION PLAT