



410 17th Street, Suite 1400  
Denver, CO 80202  
(720) 440-6100 phone  
(720) 305-0804 fax

[Bonanzacrk.com](http://Bonanzacrk.com)

October 5, 2018

State of Colorado  
Oil and Gas Conservation Commission  
1120 Lincoln Street, Suite 801  
Denver, CO 80203

**RE: Proposed Wellbore Spacing Unit**  
Antelope Federal 44-20-17XRLNC  
Niobrara New Drill  
SWSE Section 20, Township 5N, Range 62W, 6<sup>th</sup> PM  
Weld County, Colorado

Dear Director Murphy,

Bonanza Creek Energy Operating Company, LLC. ("Bonanza Creek") is planning to drill the above captioned well in accordance with the provisions of Colorado Oil and Gas Conservation Commission (COGCC) Rule 318A.e.

Bonanza Creek's proposed wellbore spacing unit consists of:

Township 5N, Range 62W (Weld County):  
Section 17: E2E2  
Section 20: E2E2  
Section 29: NENE

Total acres: 360ac

The 30 day notification time period has passed and we have not yet received any objections to such well locations or proposed spacing unit, therefore Bonanza Creek hereby requests the Director to approve the above mentioned well. Bonanza Creek respectfully requests the COGCC review the enclosed map illustrating the proposed wellbore spacing unit.

Regards,  
Bonanza Creek Energy Operating Company, LLC.

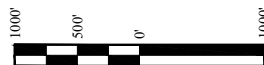
Brian Dodek, P.G.  
Manager – Environmental & Regulatory Compliance

# LEGEND:

- 90° SYMBOL
- PROPOSED WELLHEAD.
- TARGET 1 LOCATION.
- MID-LATERAL TARGET.
- TARGET BOTTOM HOLE.

T5N, R62W, 6th P.M.

LINE TABLE		
LINE	DIRECTION	LENGTH
L1	S69°34'50"E	1851.86'



NAD 83 (SURFACE LOCATION)	NAD 83 (TARGET 1 LOCATION)
LATITUDE = 40°22'46.95" (40.377970°)	LATITUDE = 40°22'40.44" (40.377899°)
LONGITUDE = 104°20'47.76" (104.346599°)	LONGITUDE = 104°20'25.40" (104.340389°)
STATE PLANE NAD 83 (CO. NORTH)	STATE PLANE NAD 83 (CO. NORTH)
N: 1383257.59' E: 3321321.25'	N: 1382621.45' E: 3323059.82'
NAD 83 (MID-LATERAL TARGET)	NAD 83 (TARGET BOTTOM HOLE)
LATITUDE = 40°23'32.53" (40.392370°)	LATITUDE = 40°24'19.89" (40.405525°)
LONGITUDE = 104°20'24.72" (104.340201°)	LONGITUDE = 104°20'22.34" (104.339540°)
STATE PLANE NAD 83 (CO. NORTH)	STATE PLANE NAD 83 (CO. NORTH)
N: 1387893.26' E: 3323043.20'	N: 1392687.84' E: 3323164.51'

BASIS OF BEARINGS  
TRANSVERSE MERCATOR PROJECTION WITH  
A CENTRAL MERIDIAN OF W105°00'00".  
BASIS OF ELEVATION  
OPUS SOLUTION GENERATED NAVD 88



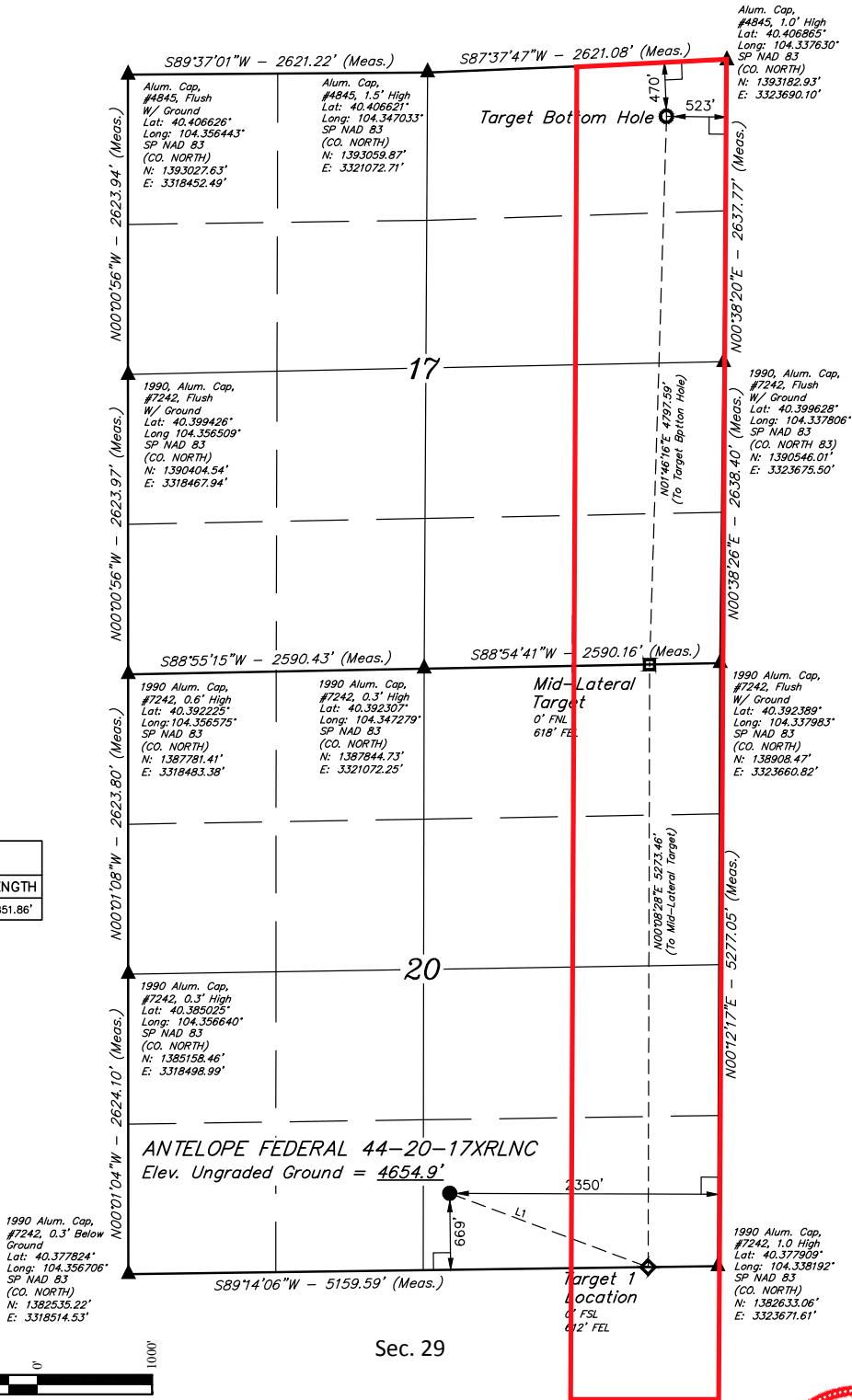
UELS, LLC  
Corporate Office \* 85 South 200 East  
Vernal, UT 84078 \* (435) 789-1017



BONANZA CREEK ENERGY  
OPERATING COMPANY, LLC  
ANTELOPE FEDERAL 44-20-17XRLNC  
SW 1/4 SE 1/4, SECTION 20, T5N, R62W, 6th P.M.  
WELD COUNTY, COLORADO

SURVEYED BY	CHAD MEIERS, O.R.	06-21-18	SCALE
DRAWN BY	J.U.	07-13-18	1" = 1000'

WELL LOCATION PLAT



CERTIFICATE OF SURVEY  
THIS IS TO CERTIFY THAT THE ABOVE PLAT WAS PREPARED BY ME AND  
NOTES OF ACTUAL SURVEYS MADE BY ME UNDER MY SUPERVISION  
AND THAT THE SAME ARE TRUE AND CORRECT TO THE BEST OF MY  
KNOWLEDGE AND BELIEF.  
REGISTERED LAND SURVEYOR  
REGISTRATION NO. 28285  
STATE OF COLORADO  
JUL 18 2018