

# BONANZA CREEK OIL COMPANY

Location: COLORADO Slot: SLOT#07 ANTELOPE E14-20-17XRLNC (210°FSL & 1338°FWL, SEC.20)  
Field: WELD COUNTY Well: ANTELOPE E14-20-17XRLNC  
Facility: SEC.20-T05N-R62W Wellbore: ANTELOPE E14-20-17XRLNC PWB

Plot reference wellpath is ANTELOPE E14-20-17XRLNC PWP (REV-A.0)	Grid System: NAD83 / Lambert Colorado SP, Northern Zone (501), US feet
True vertical depths are referenced to XTREME 19 (4664GL +17KB) (RKB)	* = Wellpath was transformed from a different geodetic datum
Measured depths are referenced to XTREME 19 (4664GL +17KB) (RKB)	North Reference: True north
XTREME 19 (4664GL +17KB) (RKB) to Mean Sea Level: 4681 feet	Scale: True distance
Mean Sea Level to Mud line (At Slot: SLOT#07 ANTELOPE E14-20-17XRLNC (210°FSL & 1338°FWL, SEC.20)): 0 feet	Depths are in feet
Coordinates are in feet referenced to Slot	Created by: ingrijamr on 2018-06-21
	Database: Denver

## Location Information

Facility Name				Grid East (US ft)	Grid North (US ft)	Latitude	Longitude
SEC.20-T05N-R62W				3318962.546	1383319.349	40°22'47.856"N	104°21'17.364"W
Slot	Local N (ft)	Local E (ft)		Grid East (US ft)	Grid North (US ft)	Latitude	Longitude
SLOT#07 ANTELOPE E14-20-17XRLNC (210°FSL & 1338°FWL, SEC.20)	-558.91	859.20		3318948.872	1382770.603	40°22'42.323"N	104°21'06.862"W
XTREME 19 (4664GL +17KB) (RKB) to Mud line (At Slot: SLOT#07 ANTELOPE E14-20-17XRLNC (210°FSL & 1338°FWL, SEC.20))						4681ft	
Mean Sea Level to Mud line (At Slot: SLOT#07 ANTELOPE E14-20-17XRLNC (210°FSL & 1338°FWL, SEC.20))						0ft	
XTREME 19 (4664GL +17KB) (RKB) to Mean Sea Level						4681ft	

## Well Profile Data

Design Comment	MD (ft)	Inc (°)	Az (°)	TVD (ft)	Local N (ft)	Local E (ft)	DLS (°/100ft)	VS (ft)
Tie On	17.00	0.000	249.891	17.00	0.00	0.00	0.00	0.00
End of Tangent	1750.00	0.000	249.891	1750.00	0.00	0.00	0.00	0.00
End of Build (XS)	2447.09	13.942	249.891	2440.23	-29.02	-79.25	2.00	-21.52
End of Tangent (XS)	5960.80	13.942	249.891	5850.43	-320.08	-874.22	0.00	-237.42
End of 3D Arc (XS)	6909.59	90.000	0.563	6456.00	252.16	-1009.26	10.00	344.89
End of Tangent (XS)	16462.96	90.000	0.563	6456.00	9805.07	-915.45	0.00	9847.71

## Hole and Casing Sections

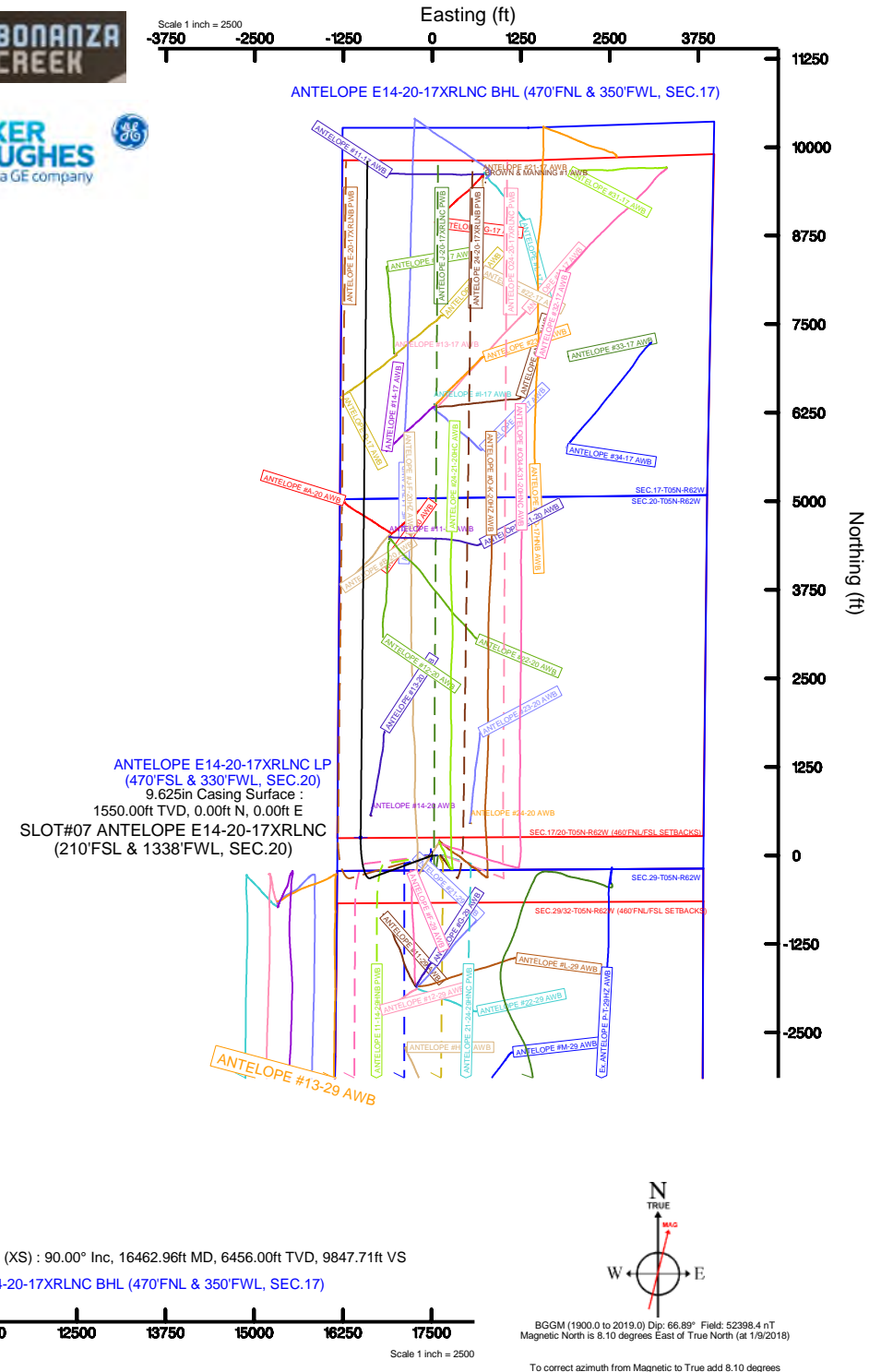
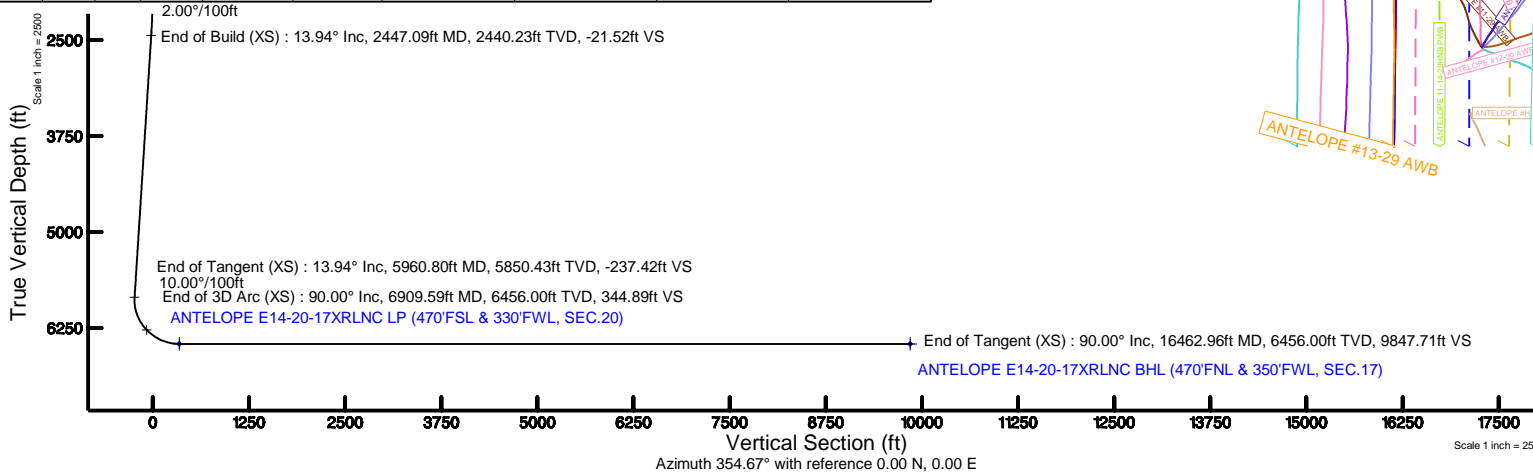
Name	Start MD (ft)	End MD (ft)	Interval (ft)	Start TVD (ft)	End TVD (ft)	Start Local N (ft)	Start Local E (ft)	End Local N (ft)	End Local E (ft)	Wellbore
9.625in Casing Surface	17.00	1550.00	1533.00	17.00	1550.00	0.00	0.00	0.00	0.00	ANTELOPE E14-20-17XRLNC PWB

## Survey Program

Start MD (ft)	End MD (ft)	Tool	Model	Log Name/Comment	Wellbore
17.00	1550.00	BHI NavTrak	BHI NavTrak (Rotating+Axial Corr)		ANTELOPE E14-20-17XRLNC PWB
1550.00	16519.05	BHI AutoTrak Curve	BHI AutoTrak Curve (Axial Corr, Short spacing)		ANTELOPE E14-20-17XRLNC PWB

## Bottom Hole Location

MD (ft)	Inc (°)	Az (°)	TVD (ft)	Local N (ft)	Local E (ft)	Grid East (US ft)	Grid North (US ft)	Latitude	Longitude
16462.96	90.000	0.563	6456.00	9805.07	-915.45	3318806.60	1392562.58	40°24'19.213"N	104°21'18.695"W





# Planned Wellpath Report

## ANTELOPE E14-20-17XRLNC PWP (REV-A.0)

Page 1 of 9



### REFERENCE WELLPATH IDENTIFICATION

Operator	BONANZA CREEK OIL COMPANY	Slot	SLOT#07 ANTELOPE E14-20-17XRLNC (210'FSL & 1338'FWL, SEC.20)
Area	COLORADO	Well	ANTELOPE E14-20-17XRLNC
Field	WELD COUNTY	Wellbore	ANTELOPE E14-20-17XRLNC PWB
Facility	SEC.20-T05N-R62W		

### REPORT SETUP INFORMATION

Projection System	NAD83 / Lambert Colorado SP, Northern Zone (501), US feet	Software System	WellArchitect® 5.0
North Reference	True	User	Ingmjmr
Scale	0.999959	Report Generated	6/21/2018 at 12:05:31 PM
Convergence at slot	0.75° East	Database/Source file	Denver/ANTELOPE_E14-20-17XRLNC_PWP__REV-A.0_.xml

### WELLPATH LOCATION

	Local coordinates		Grid coordinates		Geographic coordinates	
	North[ft]	East[ft]	Easting[US ft]	Northing[US ft]	Latitude	Longitude
Slot Location	-559.91	859.20	3319848.87	1382770.60	40°22'42.323"N	104°21'06.862"W
Facility Reference Pt			3318982.55	1383319.35	40°22'47.856"N	104°21'17.964"W
Field Reference Pt			3224525.77	1254425.87	40°01'44.400"N	104°41'53.556"W

### WELLPATH DATUM

Calculation method	Minimum curvature	XTREME 19 (4664'GL +17'KB) (RKB) to Facility Vertical Datum	4681.00ft
Horizontal Reference Pt	Slot	XTREME 19 (4664'GL +17'KB) (RKB) to Mean Sea Level	4681.00ft
Vertical Reference Pt	XTREME 19 (4664'GL +17'KB) (RKB)	XTREME 19 (4664'GL +17'KB) (RKB) to Mud Line at Slot (SLOT#07 ANTELOPE E14-20-17XRLNC (210'FSL & 1338'FWL, SEC.20))	4681.00ft
MD Reference Pt	XTREME 19 (4664'GL +17'KB) (RKB)	Section Origin	N 0.00, E 0.00 ft
Field Vertical Reference	Mean Sea Level	Section Azimuth	354.67°



# Planned Wellpath Report

ANTELOPE E14-20-17XRLNC PWP (REV-A.0)

Page 2 of 9



REFERENCE WELLPATH IDENTIFICATION			
Operator	BONANZA CREEK OIL COMPANY	Slot	SLOT#07 ANTELOPE E14-20-17XRLNC (210'FSL & 1338'FWL, SEC.20)
Area	COLORADO	Well	ANTELOPE E14-20-17XRLNC
Field	WELD COUNTY	Wellbore	ANTELOPE E14-20-17XRLNC PWB
Facility	SEC.20-T05N-R62W		

WELLPATH DATA (171 stations) † = interpolated/extrapolated station										
MD [ft]	Inclination [°]	Azimuth [°]	TVD [ft]	Vert Sect [ft]	North [ft]	East [ft]	Latitude	Longitude	DLS [°/100ft]	Comments
0.00†	0.000	249.891	0.00	0.00	0.00	0.00	40°22'42.323"N	104°21'06.862"W	0.00	
17.00	0.000	249.891	17.00	0.00	0.00	0.00	40°22'42.323"N	104°21'06.862"W	0.00	Tie On
117.00†	0.000	249.891	117.00	0.00	0.00	0.00	40°22'42.323"N	104°21'06.862"W	0.00	
217.00†	0.000	249.891	217.00	0.00	0.00	0.00	40°22'42.323"N	104°21'06.862"W	0.00	
317.00†	0.000	249.891	317.00	0.00	0.00	0.00	40°22'42.323"N	104°21'06.862"W	0.00	
417.00†	0.000	249.891	417.00	0.00	0.00	0.00	40°22'42.323"N	104°21'06.862"W	0.00	
517.00†	0.000	249.891	517.00	0.00	0.00	0.00	40°22'42.323"N	104°21'06.862"W	0.00	
617.00†	0.000	249.891	617.00	0.00	0.00	0.00	40°22'42.323"N	104°21'06.862"W	0.00	
717.00†	0.000	249.891	717.00	0.00	0.00	0.00	40°22'42.323"N	104°21'06.862"W	0.00	
817.00†	0.000	249.891	817.00	0.00	0.00	0.00	40°22'42.323"N	104°21'06.862"W	0.00	
917.00†	0.000	249.891	917.00	0.00	0.00	0.00	40°22'42.323"N	104°21'06.862"W	0.00	
1017.00†	0.000	249.891	1017.00	0.00	0.00	0.00	40°22'42.323"N	104°21'06.862"W	0.00	
1117.00†	0.000	249.891	1117.00	0.00	0.00	0.00	40°22'42.323"N	104°21'06.862"W	0.00	
1217.00†	0.000	249.891	1217.00	0.00	0.00	0.00	40°22'42.323"N	104°21'06.862"W	0.00	
1317.00†	0.000	249.891	1317.00	0.00	0.00	0.00	40°22'42.323"N	104°21'06.862"W	0.00	
1417.00†	0.000	249.891	1417.00	0.00	0.00	0.00	40°22'42.323"N	104°21'06.862"W	0.00	
1517.00†	0.000	249.891	1517.00	0.00	0.00	0.00	40°22'42.323"N	104°21'06.862"W	0.00	
1617.00†	0.000	249.891	1617.00	0.00	0.00	0.00	40°22'42.323"N	104°21'06.862"W	0.00	
1717.00†	0.000	249.891	1717.00	0.00	0.00	0.00	40°22'42.323"N	104°21'06.862"W	0.00	
1750.00	0.000	249.891	1750.00	0.00	0.00	0.00	40°22'42.323"N	104°21'06.862"W	0.00	End of Tangent
1817.00†	1.340	249.891	1816.99	-0.20	-0.27	-0.74	40°22'42.320"N	104°21'06.872"W	2.00	
1917.00†	3.340	249.891	1916.91	-1.24	-1.67	-4.57	40°22'42.306"N	104°21'06.921"W	2.00	
2017.00†	5.340	249.891	2016.61	-3.17	-4.27	-11.68	40°22'42.281"N	104°21'07.013"W	2.00	
2117.00†	7.340	249.891	2116.00	-5.99	-8.07	-22.04	40°22'42.243"N	104°21'07.147"W	2.00	
2217.00†	9.340	249.891	2214.93	-9.69	-13.06	-35.66	40°22'42.194"N	104°21'07.323"W	2.00	
2317.00†	11.340	249.891	2313.31	-14.26	-19.23	-52.52	40°22'42.133"N	104°21'07.541"W	2.00	
2417.00†	13.340	249.891	2410.99	-19.71	-26.58	-72.59	40°22'42.060"N	104°21'07.800"W	2.00	
2447.09	13.942	249.891	2440.23	-21.52	-29.02	-79.25	40°22'42.036"N	104°21'07.886"W	2.00	End of Build (XS)
2517.00†	13.942	249.891	2508.08	-25.82	-34.81	-95.07	40°22'41.979"N	104°21'08.090"W	0.00	
2617.00†	13.942	249.891	2605.14	-31.96	-43.09	-117.69	40°22'41.897"N	104°21'08.383"W	0.00	



# Planned Wellpath Report

## ANTELOPE E14-20-17XRLNC PWP (REV-A.0)

Page 3 of 9



REFERENCE WELLPATH IDENTIFICATION			
Operator	BONANZA CREEK OIL COMPANY	Slot	SLOT#07 ANTELOPE E14-20-17XRLNC (210'FSL & 1338'FWL, SEC.20)
Area	COLORADO	Well	ANTELOPE E14-20-17XRLNC
Field	WELD COUNTY	Wellbore	ANTELOPE E14-20-17XRLNC PWB
Facility	SEC.20-T05N-R62W		

WELLPATH DATA (171 stations) † = interpolated/extrapolated station										
MD [ft]	Inclination [°]	Azimuth [°]	TVD [ft]	Vert Sect [ft]	North [ft]	East [ft]	Latitude	Longitude	DLS [°/100ft]	Comments
2717.00†	13.942	249.891	2702.19	-38.11	-51.37	-140.32	40°22'41.815"N	104°21'08.675"W	0.00	
2817.00†	13.942	249.891	2799.24	-44.25	-59.66	-162.94	40°22'41.733"N	104°21'08.967"W	0.00	
2917.00†	13.942	249.891	2896.30	-50.40	-67.94	-185.57	40°22'41.652"N	104°21'09.260"W	0.00	
3017.00†	13.942	249.891	2993.35	-56.54	-76.22	-208.19	40°22'41.570"N	104°21'09.552"W	0.00	
3117.00†	13.942	249.891	3090.41	-62.69	-84.51	-230.82	40°22'41.488"N	104°21'09.844"W	0.00	
3217.00†	13.942	249.891	3187.46	-68.83	-92.79	-253.44	40°22'41.406"N	104°21'10.137"W	0.00	
3317.00†	13.942	249.891	3284.51	-74.97	-101.08	-276.07	40°22'41.324"N	104°21'10.429"W	0.00	
3417.00†	13.942	249.891	3381.57	-81.12	-109.36	-298.69	40°22'41.242"N	104°21'10.721"W	0.00	
3517.00†	13.942	249.891	3478.62	-87.26	-117.64	-321.32	40°22'41.160"N	104°21'11.014"W	0.00	
3617.00†	13.942	249.891	3575.68	-93.41	-125.93	-343.94	40°22'41.079"N	104°21'11.306"W	0.00	
3717.00†	13.942	249.891	3672.73	-99.55	-134.21	-366.56	40°22'40.997"N	104°21'11.598"W	0.00	
3817.00†	13.942	249.891	3769.78	-105.70	-142.49	-389.19	40°22'40.915"N	104°21'11.891"W	0.00	
3917.00†	13.942	249.891	3866.84	-111.84	-150.78	-411.81	40°22'40.833"N	104°21'12.183"W	0.00	
4017.00†	13.942	249.891	3963.89	-117.99	-159.06	-434.44	40°22'40.751"N	104°21'12.475"W	0.00	
4117.00†	13.942	249.891	4060.95	-124.13	-167.34	-457.06	40°22'40.669"N	104°21'12.768"W	0.00	
4217.00†	13.942	249.891	4158.00	-130.27	-175.63	-479.69	40°22'40.587"N	104°21'13.060"W	0.00	
4317.00†	13.942	249.891	4255.06	-136.42	-183.91	-502.31	40°22'40.506"N	104°21'13.352"W	0.00	
4417.00†	13.942	249.891	4352.11	-142.56	-192.19	-524.94	40°22'40.424"N	104°21'13.645"W	0.00	
4517.00†	13.942	249.891	4449.16	-148.71	-200.48	-547.56	40°22'40.342"N	104°21'13.937"W	0.00	
4617.00†	13.942	249.891	4546.22	-154.85	-208.76	-570.19	40°22'40.260"N	104°21'14.229"W	0.00	
4717.00†	13.942	249.891	4643.27	-161.00	-217.05	-592.81	40°22'40.178"N	104°21'14.522"W	0.00	
4817.00†	13.942	249.891	4740.33	-167.14	-225.33	-615.44	40°22'40.096"N	104°21'14.814"W	0.00	
4917.00†	13.942	249.891	4837.38	-173.29	-233.61	-638.06	40°22'40.014"N	104°21'15.107"W	0.00	
5017.00†	13.942	249.891	4934.43	-179.43	-241.90	-660.69	40°22'39.933"N	104°21'15.399"W	0.00	
5117.00†	13.942	249.891	5031.49	-185.58	-250.18	-683.31	40°22'39.851"N	104°21'15.691"W	0.00	
5217.00†	13.942	249.891	5128.54	-191.72	-258.46	-705.94	40°22'39.769"N	104°21'15.984"W	0.00	
5317.00†	13.942	249.891	5225.60	-197.86	-266.75	-728.56	40°22'39.687"N	104°21'16.276"W	0.00	
5417.00†	13.942	249.891	5322.65	-204.01	-275.03	-751.19	40°22'39.605"N	104°21'16.568"W	0.00	
5517.00†	13.942	249.891	5419.70	-210.15	-283.31	-773.81	40°22'39.523"N	104°21'16.861"W	0.00	
5617.00†	13.942	249.891	5516.76	-216.30	-291.60	-796.44	40°22'39.441"N	104°21'17.153"W	0.00	



# Planned Wellpath Report

ANTELOPE E14-20-17XRLNC PWP (REV-A.0)

Page 4 of 9



REFERENCE WELLPATH IDENTIFICATION			
Operator	BONANZA CREEK OIL COMPANY	Slot	SLOT#07 ANTELOPE E14-20-17XRLNC (210'FSL & 1338'FWL, SEC.20)
Area	COLORADO	Well	ANTELOPE E14-20-17XRLNC
Field	WELD COUNTY	Wellbore	ANTELOPE E14-20-17XRLNC PWB
Facility	SEC.20-T05N-R62W		

WELLPATH DATA (171 stations) † = interpolated/extrapolated station										
MD [ft]	Inclination [°]	Azimuth [°]	TVD [ft]	Vert Sect [ft]	North [ft]	East [ft]	Latitude	Longitude	DLS [°/100ft]	Comments
5717.00†	13.942	249.891	5613.81	-222.44	-299.88	-819.06	40°22'39.360"N	104°21'17.445"W	0.00	
5817.00†	13.942	249.891	5710.87	-228.59	-308.17	-841.69	40°22'39.278"N	104°21'17.738"W	0.00	
5917.00†	13.942	249.891	5807.92	-234.73	-316.45	-864.31	40°22'39.196"N	104°21'18.030"W	0.00	
5960.80	13.942	249.891	5850.43	-237.42	-320.08	-874.22	40°22'39.160"N	104°21'18.158"W	0.00	End of Tangent (XS)
6017.00†	13.097	273.834	5905.12	-238.14	-321.98	-886.94	40°22'39.141"N	104°21'18.322"W	10.00	
6117.00†	16.862	310.540	6001.91	-225.89	-311.77	-909.33	40°22'39.242"N	104°21'18.611"W	10.00	
6217.00†	24.364	329.707	6095.55	-196.70	-284.46	-930.81	40°22'39.512"N	104°21'18.889"W	10.00	
6317.00†	33.154	339.735	6183.18	-151.47	-240.89	-950.73	40°22'39.942"N	104°21'19.147"W	10.00	
6417.00†	42.437	345.846	6262.14	-91.55	-182.38	-968.50	40°22'40.521"N	104°21'19.376"W	10.00	
6517.00†	51.945	350.086	6330.03	-18.78	-110.70	-983.57	40°22'41.229"N	104°21'19.571"W	10.00	
6617.00†	61.570	353.339	6384.80	64.63	-28.03	-995.48	40°22'42.046"N	104°21'19.725"W	10.00	
6717.00†	71.259	356.043	6424.77	156.16	63.11	-1003.87	40°22'42.946"N	104°21'19.833"W	10.00	
6817.00†	80.983	358.450	6448.73	253.01	159.96	-1008.48	40°22'43.903"N	104°21'19.893"W	10.00	
6909.59	90.000	0.563	6456.00†	344.89	252.16	-1009.26	40°22'44.815"N	104°21'19.903"W	10.00	End of 3D Arc (XS)
6917.00†	90.000	0.563	6456.00	352.26	259.57	-1009.19	40°22'44.888"N	104°21'19.902"W	0.00	
7017.00†	90.000	0.563	6456.00	451.73	359.56	-1008.21	40°22'45.876"N	104°21'19.890"W	0.00	
7117.00†	90.000	0.563	6456.00	551.20	459.56	-1007.23	40°22'46.864"N	104°21'19.877"W	0.00	
7217.00†	90.000	0.563	6456.00	650.67	559.55	-1006.24	40°22'47.852"N	104°21'19.864"W	0.00	
7317.00†	90.000	0.563	6456.00	750.14	659.55	-1005.26	40°22'48.840"N	104°21'19.852"W	0.00	
7417.00†	90.000	0.563	6456.00	849.61	759.54	-1004.28	40°22'49.828"N	104°21'19.839"W	0.00	
7517.00†	90.000	0.563	6456.00	949.08	859.54	-1003.30	40°22'50.816"N	104°21'19.826"W	0.00	
7617.00†	90.000	0.563	6456.00	1048.55	959.53	-1002.32	40°22'51.805"N	104°21'19.814"W	0.00	
7717.00†	90.000	0.563	6456.00	1148.03	1059.53	-1001.33	40°22'52.793"N	104°21'19.801"W	0.00	
7817.00†	90.000	0.563	6456.00	1247.50	1159.52	-1000.35	40°22'53.781"N	104°21'19.788"W	0.00	
7917.00†	90.000	0.563	6456.00	1346.97	1259.52	-999.37	40°22'54.769"N	104°21'19.776"W	0.00	
8017.00†	90.000	0.563	6456.00	1446.44	1359.51	-998.39	40°22'55.757"N	104°21'19.763"W	0.00	
8117.00†	90.000	0.563	6456.00	1545.91	1459.51	-997.41	40°22'56.745"N	104°21'19.750"W	0.00	
8217.00†	90.000	0.563	6456.00	1645.38	1559.50	-996.42	40°22'57.733"N	104°21'19.738"W	0.00	
8317.00†	90.000	0.563	6456.00	1744.85	1659.50	-995.44	40°22'58.721"N	104°21'19.725"W	0.00	
8417.00†	90.000	0.563	6456.00	1844.32	1759.49	-994.46	40°22'59.710"N	104°21'19.713"W	0.00	





# Planned Wellpath Report

ANTELOPE E14-20-17XRLNC PWP (REV-A.0)

Page 5 of 9



REFERENCE WELLPATH IDENTIFICATION			
Operator	BONANZA CREEK OIL COMPANY	Slot	SLOT#07 ANTELOPE E14-20-17XRLNC (210'FSL & 1338'FWL, SEC.20)
Area	COLORADO	Well	ANTELOPE E14-20-17XRLNC
Field	WELD COUNTY	Wellbore	ANTELOPE E14-20-17XRLNC PWB
Facility	SEC.20-T05N-R62W		

WELLPATH DATA (171 stations) † = interpolated/extrapolated station										
MD [ft]	Inclination [°]	Azimuth [°]	TVD [ft]	Vert Sect [ft]	North [ft]	East [ft]	Latitude	Longitude	DLS [°/100ft]	Comments
8517.00†	90.000	0.563	6456.00	1943.79	1859.49	-993.48	40°23'00.698"N	104°21'19.700"W	0.00	
8617.00†	90.000	0.563	6456.00	2043.26	1959.48	-992.50	40°23'01.686"N	104°21'19.687"W	0.00	
8717.00†	90.000	0.563	6456.00	2142.73	2059.48	-991.51	40°23'02.674"N	104°21'19.675"W	0.00	
8817.00†	90.000	0.563	6456.00	2242.21	2159.48	-990.53	40°23'03.662"N	104°21'19.662"W	0.00	
8917.00†	90.000	0.563	6456.00	2341.68	2259.47	-989.55	40°23'04.650"N	104°21'19.649"W	0.00	
9017.00†	90.000	0.563	6456.00	2441.15	2359.47	-988.57	40°23'05.638"N	104°21'19.637"W	0.00	
9117.00†	90.000	0.563	6456.00	2540.62	2459.46	-987.59	40°23'06.626"N	104°21'19.624"W	0.00	
9217.00†	90.000	0.563	6456.00	2640.09	2559.46	-986.60	40°23'07.614"N	104°21'19.611"W	0.00	
9317.00†	90.000	0.563	6456.00	2739.56	2659.45	-985.62	40°23'08.603"N	104°21'19.599"W	0.00	
9417.00†	90.000	0.563	6456.00	2839.03	2759.45	-984.64	40°23'09.591"N	104°21'19.586"W	0.00	
9517.00†	90.000	0.563	6456.00	2938.50	2859.44	-983.66	40°23'10.579"N	104°21'19.574"W	0.00	
9617.00†	90.000	0.563	6456.00	3037.97	2959.44	-982.68	40°23'11.567"N	104°21'19.561"W	0.00	
9717.00†	90.000	0.563	6456.00	3137.44	3059.43	-981.69	40°23'12.555"N	104°21'19.548"W	0.00	
9817.00†	90.000	0.563	6456.00	3236.91	3159.43	-980.71	40°23'13.543"N	104°21'19.536"W	0.00	
9917.00†	90.000	0.563	6456.00	3336.38	3259.42	-979.73	40°23'14.531"N	104°21'19.523"W	0.00	
10017.00†	90.000	0.563	6456.00	3435.86	3359.42	-978.75	40°23'15.519"N	104°21'19.510"W	0.00	
10117.00†	90.000	0.563	6456.00	3535.33	3459.41	-977.77	40°23'16.508"N	104°21'19.498"W	0.00	
10217.00†	90.000	0.563	6456.00	3634.80	3559.41	-976.79	40°23'17.496"N	104°21'19.485"W	0.00	
10317.00†	90.000	0.563	6456.00	3734.27	3659.40	-975.80	40°23'18.484"N	104°21'19.472"W	0.00	
10417.00†	90.000	0.563	6456.00	3833.74	3759.40	-974.82	40°23'19.472"N	104°21'19.460"W	0.00	
10517.00†	90.000	0.563	6456.00	3933.21	3859.39	-973.84	40°23'20.460"N	104°21'19.447"W	0.00	
10617.00†	90.000	0.563	6456.00	4032.68	3959.39	-972.86	40°23'21.448"N	104°21'19.435"W	0.00	
10717.00†	90.000	0.563	6456.00	4132.15	4059.38	-971.88	40°23'22.436"N	104°21'19.422"W	0.00	
10817.00†	90.000	0.563	6456.00	4231.62	4159.38	-970.89	40°23'23.424"N	104°21'19.409"W	0.00	
10917.00†	90.000	0.563	6456.00	4331.09	4259.37	-969.91	40°23'24.413"N	104°21'19.397"W	0.00	
11017.00†	90.000	0.563	6456.00	4430.56	4359.37	-968.93	40°23'25.401"N	104°21'19.384"W	0.00	
11117.00†	90.000	0.563	6456.00	4530.04	4459.36	-967.95	40°23'26.389"N	104°21'19.371"W	0.00	
11217.00†	90.000	0.563	6456.00	4629.51	4559.36	-966.97	40°23'27.377"N	104°21'19.359"W	0.00	
11317.00†	90.000	0.563	6456.00	4728.98	4659.35	-965.98	40°23'28.365"N	104°21'19.346"W	0.00	
11417.00†	90.000	0.563	6456.00	4828.45	4759.35	-965.00	40°23'29.353"N	104°21'19.333"W	0.00	



# Planned Wellpath Report

ANTELOPE E14-20-17XRLNC PWP (REV-A.0)

Page 6 of 9



REFERENCE WELLPATH IDENTIFICATION			
Operator	BONANZA CREEK OIL COMPANY	Slot	SLOT#07 ANTELOPE E14-20-17XRLNC (210'FSL & 1338'FWL, SEC.20)
Area	COLORADO	Well	ANTELOPE E14-20-17XRLNC
Field	WELD COUNTY	Wellbore	ANTELOPE E14-20-17XRLNC PWB
Facility	SEC.20-T05N-R62W		

WELLPATH DATA (171 stations) † = interpolated/extrapolated station										
MD [ft]	Inclination [°]	Azimuth [°]	TVD [ft]	Vert Sect [ft]	North [ft]	East [ft]	Latitude	Longitude	DLS [°/100ft]	Comments
11517.00†	90.000	0.563	6456.00	4927.92	4859.35	-964.02	40°23'30.341"N	104°21'19.321"W	0.00	
11617.00†	90.000	0.563	6456.00	5027.39	4959.34	-963.04	40°23'31.329"N	104°21'19.308"W	0.00	
11717.00†	90.000	0.563	6456.00	5126.86	5059.34	-962.06	40°23'32.317"N	104°21'19.295"W	0.00	
11817.00†	90.000	0.563	6456.00	5226.33	5159.33	-961.07	40°23'33.306"N	104°21'19.283"W	0.00	
11917.00†	90.000	0.563	6456.00	5325.80	5259.33	-960.09	40°23'34.294"N	104°21'19.270"W	0.00	
12017.00†	90.000	0.563	6456.00	5425.27	5359.32	-959.11	40°23'35.282"N	104°21'19.258"W	0.00	
12117.00†	90.000	0.563	6456.00	5524.74	5459.32	-958.13	40°23'36.270"N	104°21'19.245"W	0.00	
12217.00†	90.000	0.563	6456.00	5624.22	5559.31	-957.15	40°23'37.258"N	104°21'19.232"W	0.00	
12317.00†	90.000	0.563	6456.00	5723.69	5659.31	-956.16	40°23'38.246"N	104°21'19.220"W	0.00	
12417.00†	90.000	0.563	6456.00	5823.16	5759.30	-955.18	40°23'39.234"N	104°21'19.207"W	0.00	
12517.00†	90.000	0.563	6456.00	5922.63	5859.30	-954.20	40°23'40.222"N	104°21'19.194"W	0.00	
12617.00†	90.000	0.563	6456.00	6022.10	5959.29	-953.22	40°23'41.210"N	104°21'19.182"W	0.00	
12717.00†	90.000	0.563	6456.00	6121.57	6059.29	-952.24	40°23'42.199"N	104°21'19.169"W	0.00	
12817.00†	90.000	0.563	6456.00	6221.04	6159.28	-951.25	40°23'43.187"N	104°21'19.156"W	0.00	
12917.00†	90.000	0.563	6456.00	6320.51	6259.28	-950.27	40°23'44.175"N	104°21'19.144"W	0.00	
13017.00†	90.000	0.563	6456.00	6419.98	6359.27	-949.29	40°23'45.163"N	104°21'19.131"W	0.00	
13117.00†	90.000	0.563	6456.00	6519.45	6459.27	-948.31	40°23'46.151"N	104°21'19.119"W	0.00	
13217.00†	90.000	0.563	6456.00	6618.92	6559.26	-947.33	40°23'47.139"N	104°21'19.106"W	0.00	
13317.00†	90.000	0.563	6456.00	6718.40	6659.26	-946.34	40°23'48.127"N	104°21'19.093"W	0.00	
13417.00†	90.000	0.563	6456.00	6817.87	6759.25	-945.36	40°23'49.115"N	104°21'19.081"W	0.00	
13517.00†	90.000	0.563	6456.00	6917.34	6859.25	-944.38	40°23'50.104"N	104°21'19.068"W	0.00	
13617.00†	90.000	0.563	6456.00	7016.81	6959.24	-943.40	40°23'51.092"N	104°21'19.055"W	0.00	
13717.00†	90.000	0.563	6456.00	7116.28	7059.24	-942.42	40°23'52.080"N	104°21'19.043"W	0.00	
13817.00†	90.000	0.563	6456.00	7215.75	7159.23	-941.43	40°23'53.068"N	104°21'19.030"W	0.00	
13917.00†	90.000	0.563	6456.00	7315.22	7259.23	-940.45	40°23'54.056"N	104°21'19.017"W	0.00	
14017.00†	90.000	0.563	6456.00	7414.69	7359.22	-939.47	40°23'55.044"N	104°21'19.005"W	0.00	
14117.00†	90.000	0.563	6456.00	7514.16	7459.22	-938.49	40°23'56.032"N	104°21'18.992"W	0.00	
14217.00†	90.000	0.563	6456.00	7613.63	7559.21	-937.51	40°23'57.020"N	104°21'18.979"W	0.00	
14317.00†	90.000	0.563	6456.00	7713.10	7659.21	-936.52	40°23'58.008"N	104°21'18.967"W	0.00	
14417.00†	90.000	0.563	6456.00	7812.57	7759.21	-935.54	40°23'58.997"N	104°21'18.954"W	0.00	



# Planned Wellpath Report

ANTELOPE E14-20-17XRLNC PWP (REV-A.0)

Page 7 of 9



REFERENCE WELLPATH IDENTIFICATION			
Operator	BONANZA CREEK OIL COMPANY	Slot	SLOT#07 ANTELOPE E14-20-17XRLNC (210'FSL & 1338'FWL, SEC.20)
Area	COLORADO	Well	ANTELOPE E14-20-17XRLNC
Field	WELD COUNTY	Wellbore	ANTELOPE E14-20-17XRLNC PWB
Facility	SEC.20-T05N-R62W		

WELLPATH DATA (171 stations) † = interpolated/extrapolated station										
MD [ft]	Inclination [°]	Azimuth [°]	TVD [ft]	Vert Sect [ft]	North [ft]	East [ft]	Latitude	Longitude	DLS [°/100ft]	Comments
14517.00†	90.000	0.563	6456.00	7912.05	7859.20	-934.56	40°23'59.985"N	104°21'18.942"W	0.00	
14617.00†	90.000	0.563	6456.00	8011.52	7959.20	-933.58	40°24'00.973"N	104°21'18.929"W	0.00	
14717.00†	90.000	0.563	6456.00	8110.99	8059.19	-932.60	40°24'01.961"N	104°21'18.916"W	0.00	
14817.00†	90.000	0.563	6456.00	8210.46	8159.19	-931.61	40°24'02.949"N	104°21'18.904"W	0.00	
14917.00†	90.000	0.563	6456.00	8309.93	8259.18	-930.63	40°24'03.937"N	104°21'18.891"W	0.00	
15017.00†	90.000	0.563	6456.00	8409.40	8359.18	-929.65	40°24'04.925"N	104°21'18.878"W	0.00	
15117.00†	90.000	0.563	6456.00	8508.87	8459.17	-928.67	40°24'05.913"N	104°21'18.866"W	0.00	
15217.00†	90.000	0.563	6456.00	8608.34	8559.17	-927.69	40°24'06.902"N	104°21'18.853"W	0.00	
15317.00†	90.000	0.563	6456.00	8707.81	8659.16	-926.70	40°24'07.890"N	104°21'18.840"W	0.00	
15417.00†	90.000	0.563	6456.00	8807.28	8759.16	-925.72	40°24'08.878"N	104°21'18.828"W	0.00	
15517.00†	90.000	0.563	6456.00	8906.75	8859.15	-924.74	40°24'09.866"N	104°21'18.815"W	0.00	
15617.00†	90.000	0.563	6456.00	9006.23	8959.15	-923.76	40°24'10.854"N	104°21'18.802"W	0.00	
15717.00†	90.000	0.563	6456.00	9105.70	9059.14	-922.78	40°24'11.842"N	104°21'18.790"W	0.00	
15817.00†	90.000	0.563	6456.00	9205.17	9159.14	-921.79	40°24'12.830"N	104°21'18.777"W	0.00	
15917.00†	90.000	0.563	6456.00	9304.64	9259.13	-920.81	40°24'13.818"N	104°21'18.764"W	0.00	
16017.00†	90.000	0.563	6456.00	9404.11	9359.13	-919.83	40°24'14.806"N	104°21'18.752"W	0.00	
16117.00†	90.000	0.563	6456.00	9503.58	9459.12	-918.85	40°24'15.795"N	104°21'18.739"W	0.00	
16217.00†	90.000	0.563	6456.00	9603.05	9559.12	-917.87	40°24'16.783"N	104°21'18.727"W	0.00	
16317.00†	90.000	0.563	6456.00	9702.52	9659.11	-916.88	40°24'17.771"N	104°21'18.714"W	0.00	
16417.00†	90.000	0.563	6456.00	9801.99	9759.11	-915.90	40°24'18.759"N	104°21'18.701"W	0.00	
16462.96	90.000	0.563	6456.00 <sup>2</sup>	9847.71	9805.07	-915.45	40°24'19.213"N	104°21'18.695"W	0.00	End of Tangent (XS)

HOLE & CASING SECTIONS - Ref Wellbore: ANTELOPE E14-20-17XRLNC PWB Ref Wellpath: ANTELOPE E14-20-17XRLNC PWP (REV-A.0)									
String/Diameter	Start MD [ft]	End MD [ft]	Interval [ft]	Start TVD [ft]	End TVD [ft]	Start N/S [ft]	Start E/W [ft]	End N/S [ft]	End E/W [ft]
9.625in Casing Surface	17.00	1550.00	1533.00	17.00	1550.00	0.00	0.00	0.00	0.00





# Planned Wellpath Report

ANTELOPE E14-20-17XRLNC PWP (REV-A.0)

Page 8 of 9



REFERENCE WELLPATH IDENTIFICATION			
Operator	BONANZA CREEK OIL COMPANY	Slot	SLOT#07 ANTELOPE E14-20-17XRLNC (210'FSL & 1338'FWL, SEC.20)
Area	COLORADO	Well	ANTELOPE E14-20-17XRLNC
Field	WELD COUNTY	Wellbore	ANTELOPE E14-20-17XRLNC PWB
Facility	SEC.20-T05N-R62W		

TARGETS									
Name	MD [ft]	TVD [ft]	North [ft]	East [ft]	Grid East [US ft]	Grid North [US ft]	Latitude	Longitude	Shape
SEC.17-T05N-R62W		0.00	-0.40	-20.04	3319828.83	1382769.94	40°22'42.319"N	104°21'07.121"W	polygon
SEC.20-T05N-R62W		0.00	-0.40	-20.04	3319828.83	1382769.94	40°22'42.319"N	104°21'07.121"W	polygon
SEC.29-T05N-R62W		0.00	-0.40	-20.04	3319828.83	1382769.94	40°22'42.319"N	104°21'07.121"W	polygon
SEC.17/20-T05N-R62W (460'FNL/FSL SETBACKS)		6381.00	-0.40	-20.04	3319828.83	1382769.94	40°22'42.319"N	104°21'07.121"W	polygon
SEC.29/32-T05N-R62W (460'FNL/FSL SETBACKS)		6381.00	-0.40	-20.04	3319828.83	1382769.94	40°22'42.319"N	104°21'07.121"W	polygon
STATE ANTELOPE A11-29-32XRLNC BHL (470'FSL & 325'FWL, SEC.32)		6446.00	-10239.90	-1131.62	3318849.96	1372517.34	40°21'01.135"N	104°21'21.478"W	point
2) ANTELOPE E14-20-17XRLNC BHL (470'FNL & 350'FWL, SEC.17)	16462.96	6456.00	9805.07	-915.45	3318806.60	1392562.58	40°24'19.213"N	104°21'18.695"W	point
1) ANTELOPE E14-20-17XRLNC LP (470'FSL & 330'FWL, SEC.20)	6909.59	6456.00	252.16	-1009.26	3318836.47	1383009.66	40°22'44.815"N	104°21'19.903"W	point

SURVEY PROGRAM - Ref Wellbore: ANTELOPE E14-20-17XRLNC PWB Ref Wellpath: ANTELOPE E14-20-17XRLNC PWP (REV-A.0)				
Start MD [ft]	End MD [ft]	Positional Uncertainty Model	Log Name/Comment	Wellbore
17.00	1550.00	BHI NaviTrak (Rotating+Axial Corr)		ANTELOPE E14-20-17XRLNC PWB
1550.00	16519.05	BHI AutoTrak Curve (Axial Corr, Short spacing)		ANTELOPE E14-20-17XRLNC PWB



# Planned Wellpath Report

ANTELOPE E14-20-17XRLNC PWP (REV-A.0)

Page 9 of 9



REFERENCE WELLPATH IDENTIFICATION			
Operator	BONANZA CREEK OIL COMPANY	Slot	SLOT#07 ANTELOPE E14-20-17XRLNC (210'FSL & 1338'FWL, SEC.20)
Area	COLORADO	Well	ANTELOPE E14-20-17XRLNC
Field	WELD COUNTY	Wellbore	ANTELOPE E14-20-17XRLNC PWB
Facility	SEC.20-T05N-R62W		

DESIGN COMMENTS				
MD [ft]	Inclination [°]	Azimuth [°]	TVD [ft]	Comment
17.00	0.000	249.891	17.00	Tie On
1750.00	0.000	249.891	1750.00	End of Tangent
2447.09	13.942	249.891	2440.23	End of Build (XS)
5960.80	13.942	249.891	5850.43	End of Tangent (XS)
6909.59	90.000	0.563	6456.00	End of 3D Arc (XS)
16462.96	90.000	0.563	6456.00	End of Tangent (XS)