



410 17th Street, Suite 1400  
Denver, CO 80202  
(720) 440-6100 phone  
(720) 305-0804 fax

[Bonanzacrk.com](http://Bonanzacrk.com)

October 5, 2018

State of Colorado  
Oil and Gas Conservation Commission  
1120 Lincoln Street, Suite 801  
Denver, CO 80203

**RE: Proposed Wellbore Spacing Unit**  
Antelope Federal O34-K31-20HNB  
Niobrara New Drill  
SWSE Section 20, Township 5N, Range 62W, 6<sup>th</sup> PM  
Weld County, Colorado

Dear Director Murphy,

Bonanza Creek Energy Operating Company, LLC. ("Bonanza Creek") is planning to drill the above captioned well in accordance with the provisions of Colorado Oil and Gas Conservation Commission (COGCC) Rule 318A.e.

Bonanza Creek's proposed wellbore spacing unit consists of:

Township 5N, Range 62W (Weld County):  
Section 17: SESW, SWSE  
Section 20: W2E2, E2W2  
Section 29: NWNE, NENW

Total acres: 480ac

The 30 day notification time period has passed and we have not yet received any objections to such well locations or proposed spacing unit, therefore Bonanza Creek hereby requests the Director to approve the above mentioned well. Bonanza Creek respectfully requests the COGCC review the enclosed map illustrating the proposed wellbore spacing unit.

Regards,  
Bonanza Creek Energy Operating Company, LLC.

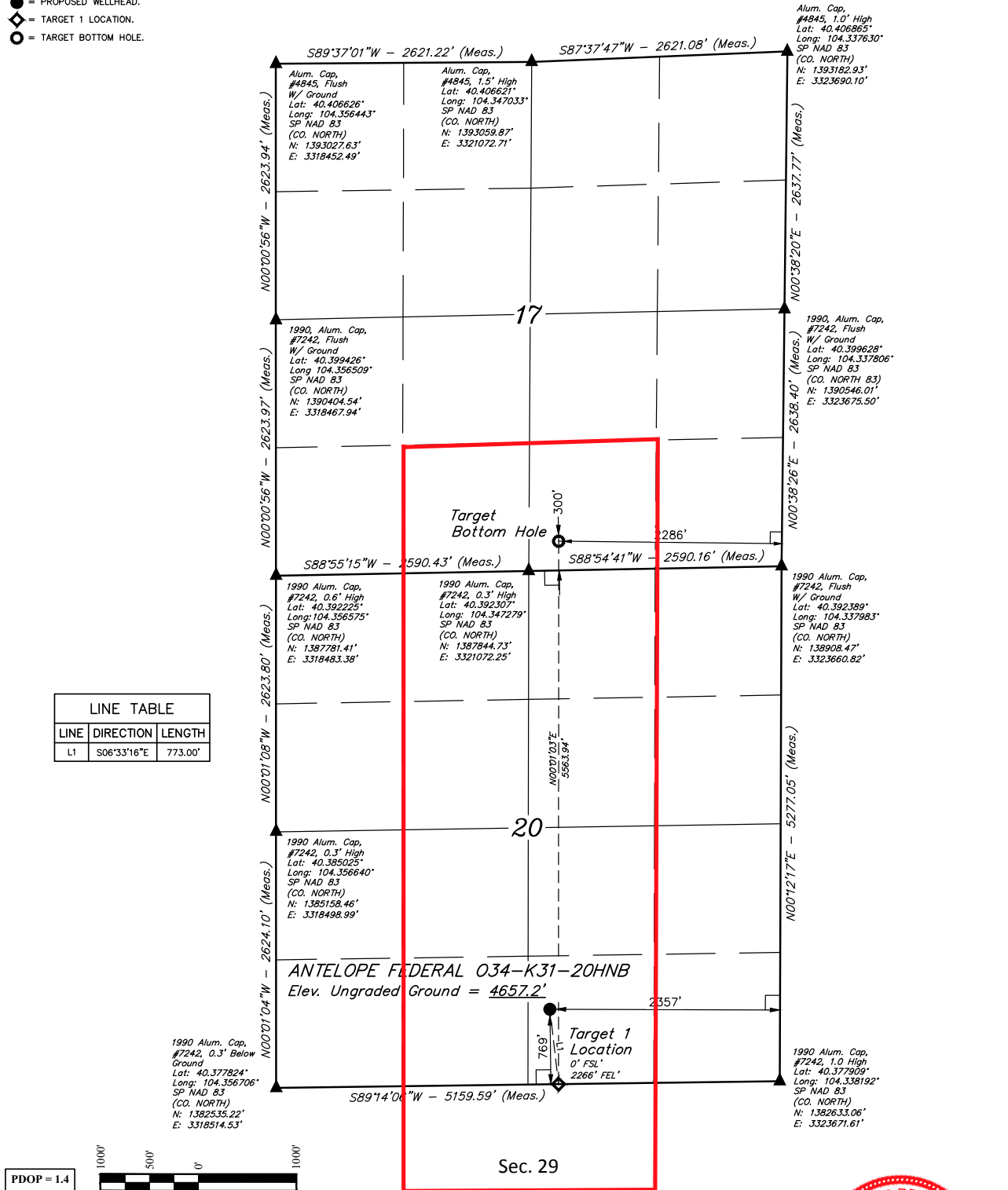
Brian Dodek, P.G.  
Manager – Environmental & Regulatory Compliance

# LEGEND:

- 90° SYMBOL
- PROPOSED WELLHEAD.
- TARGET 1 LOCATION.
- TARGET BOTTOM HOLE.

T5N, R62W, 6th P.M.

LINE TABLE		
LINE	DIRECTION	LENGTH
L1	S06°33'16"E	773.00'



NAD 83 (SURFACE LOCATION)	NAD 83 (TARGET 1 LOCATION)
LATITUDE = 40°22'47.93" (40.377981°)	LATITUDE = 40°22'40.34" (40.377872°)
LONGITUDE = 104°20'47.83" (104.346621°)	LONGITUDE = 104°20'46.77" (104.346324°)
STATE PLANE NAD 83 (CO. NORTH)	STATE PLANE NAD 83 (CO. NORTH)
N: 1383357.28' E: 3321313.87'	N: 1382590.08' E: 3321406.39'
	NAD 83 (TARGET BOTTOM HOLE)
	LATITUDE = 40°23'35.30" (40.393140°)
	LONGITUDE = 104°20'46.21" (104.346171°)
	STATE PLANE NAD 83 (CO. NORTH)
	N: 1388152.23' E: 3321376.85'

CERTIFICATE OF SURVEY

THIS IS TO CERTIFY THAT THE ABOVE DESCRIBED SURVEY WAS MADE IN ACCORDANCE WITH THE NOTES OF ACTUAL SURVEYS MADE BY ME, AND THAT THE SAME ARE TRUE AND CORRECT TO THE BEST OF MY KNOWLEDGE AND BELIEF.

REGISTERED LAND SURVEYOR  
REGISTRATION NO. 28285  
STATE OF COLORADO

18

REV: 1 08-01-18 K.M.R. (WELL NAME CHANGE)

BASIS OF BEARINGS  
TRANSVERSE MERCATOR PROJECTION WITH  
A CENTRAL MERIDIAN OF W105°00'00".

BASIS OF ELEVATION  
OPUS SOLUTION GENERATED NAVD 88



UELS, LLC  
Corporate Office \* 85 South 200 East  
Vernal, UT 84078 \* (435) 789-1017



BONANZA CREEK ENERGY  
OPERATING COMPANY, LLC

ANTELOPE FEDERAL 034-K31-20HNB  
SW 1/4 SE 1/4, SECTION 20, T5N, R62W, 6th P.M.  
WELD COUNTY, COLORADO

SURVEYED BY	CHAD MEIERS, O.R.	06-21-18	SCALE
DRAWN BY	J.U.	07-13-18	1" = 1000'

WELL LOCATION PLAT