

GENERAL NOTES:

DESIGN CODES:

1. AISC – MANUAL OF STEEL CONSTRUCTION. 14th EDITION, 2010.
2. ANSI/AWS D1.1 STRUCTURAL WELDING CODE – STEEL.

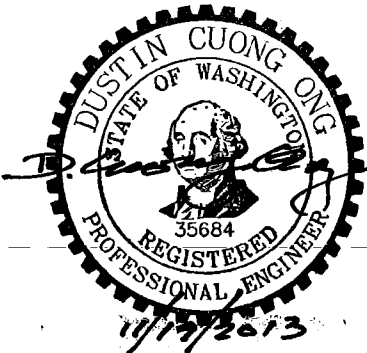
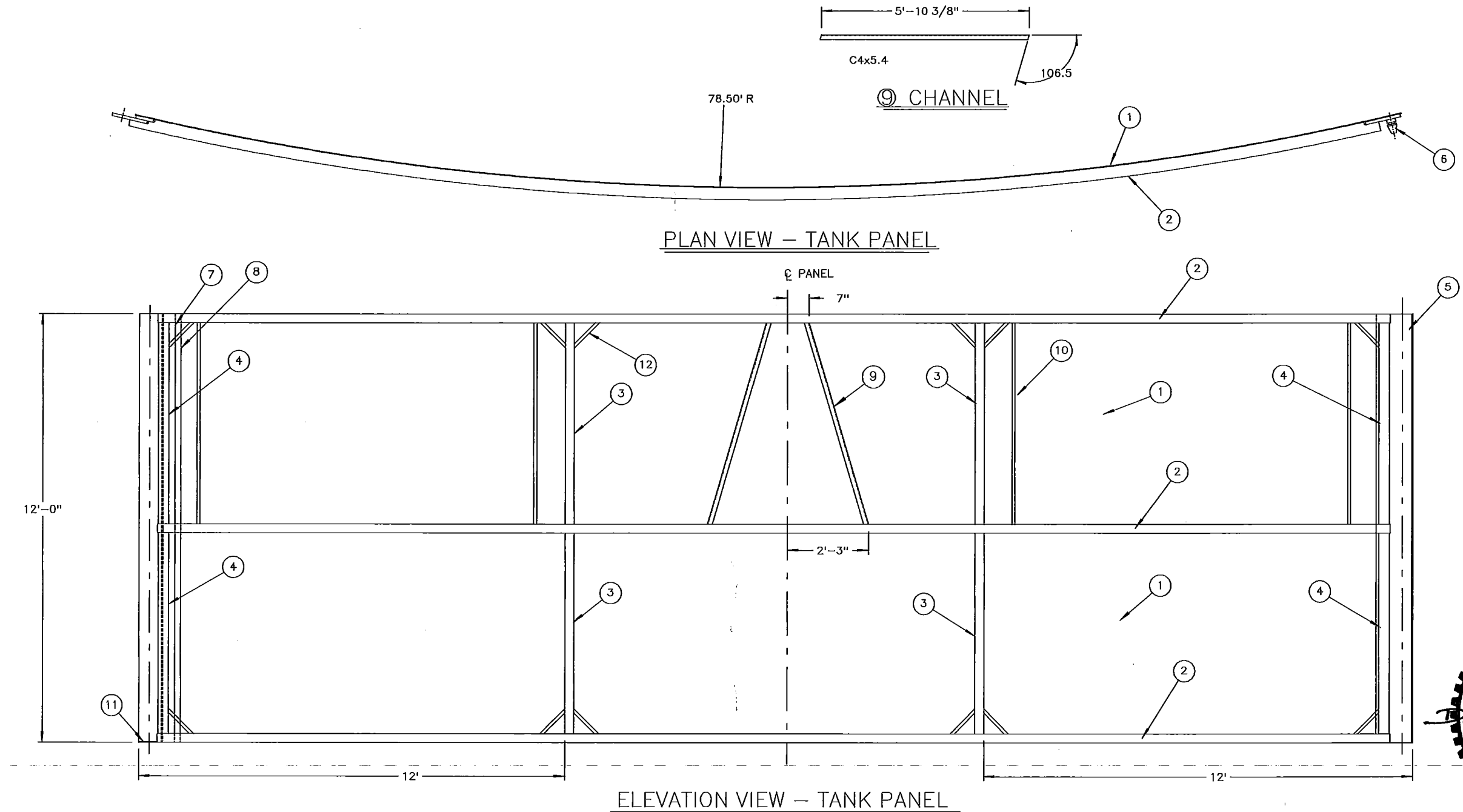
MATERIALS:

1. STRUCTURAL STEEL FABRICATION AND ERECTION SHALL BE IN ACCORDANCE WITH THE FOLLOWING,
ANSI/AISC 360–10, SPECIFICATIONS FOR STRUCTURAL STEEL BULDINGS.
AISC 303–05, CODE OF STANDARD PRACTICE FOR STEEL BUILDINGS AND BRIDGES.
2. WELDING SHALL CONFORM TO AWS D1.1 STANDARDS AND THE FOLLOWING,
PERFORMED BY AWS CERTIFIED WELDERS FOR ROD AND POSITIONS USING E70XX.
USE PRE–QUALIFIED WELDS AS DEFINED IN AWS.
3. ALL STEEL SHALL BE IN ACCORDANCE WITH THE MATERIAL LIST ON THIS SHEET AND SHALL BE PAINTED (1) COAT SHOP PRIMER.

NOTES:

1. ALL PINS, JOINT WELDS AND JOINT CONNECTIONS SHALL BE INSPECTED AND DOCUMENTED
AFTER EACH TANK ASSEMBLY AND BEFORE USE. ANY DAMAGE FOUND DURING INSPECTION
OR ANY ABNORMAL DEFORMATIONS AFTER A WATER FILL SHALL BE REPAIRED TO CONFORM TO THE PLANS.
2. THE TANK SEGMENTS SHALL BE PICKED AND TRANSPORTED IN A MANNER THAT PREVENTS DAMAGE.

MATERIAL LIST					
MK	QUAN	DESCRIPTION	SIZE	MATERIAL	WEIGHT
	1	TANK ASSEMBLY			
	14	TANK PANEL			6710
1	2	TANK SKIN	1/4" x 72" x 422.50"	ASTM A36	4335
2	3	TANK RIB	HSS 3" x 4" x 3/16" x 416.38"	ASTM A 500 GR. B	850
3	4	MID VERTICAL RIB	HSS 3" x 4" x 3/16" x 67.50"	ASTM A 500 GR. B	185
4	4	END VERTICAL RIB	HSS 3 1/2" SQ. 3/16" x 67.50"	ASTM A 500 GR. B	185
5	1	JOINT PLATE	.75" x 12" x 144"	ASTM A36	370
6	12	JOINT PIN	2.500" DIA. x 5.000"	ASTM A 1018 CR	70
7	1	JOINT PLATE	.75" x 12" x 144"	ASTM A36	370
8	1	JOINT PLATE	.75" x 6" x 144"	ASTM A36	185
9	2	CHANNEL	C4x5.4 x 71.00"	ASTM A572 GR. 50	65
10	4	SLIDER BAR	1" DIA. x 5' 7 1/2"	ASTM A36	60
11	1	GUSSET	.25" x 2.50" x 6 .25"	ASTM A36	1
12	12	GUSSET BAR	1" DIA. x 12"	ASTM A36	34
13	1	LOCK BAR	.375" x 4.50" x 66.5"	ASTM A36	
14	1	LOCK BAR	.375" x 4.50" x 76.0"	ASTM A36	



JCR FABRICATION
516 MULOCK STREET
ONTONAGON, MI. 49953
(906) 235-2683

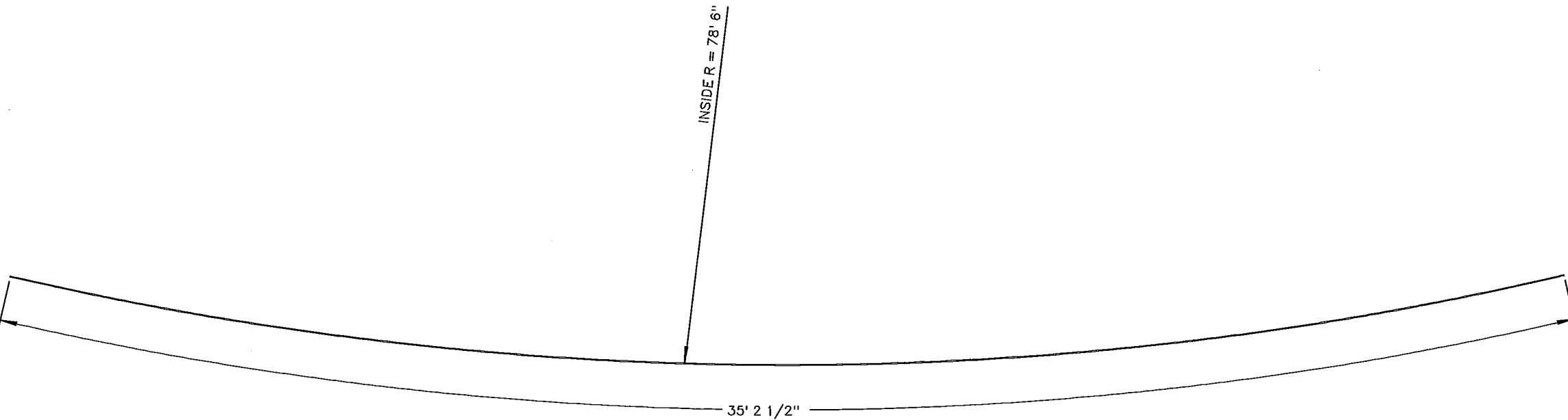
FRACK TANK
MATERIAL LIST

DRAWN: GAH
DATE: 11/18/13

REV.
DATE:

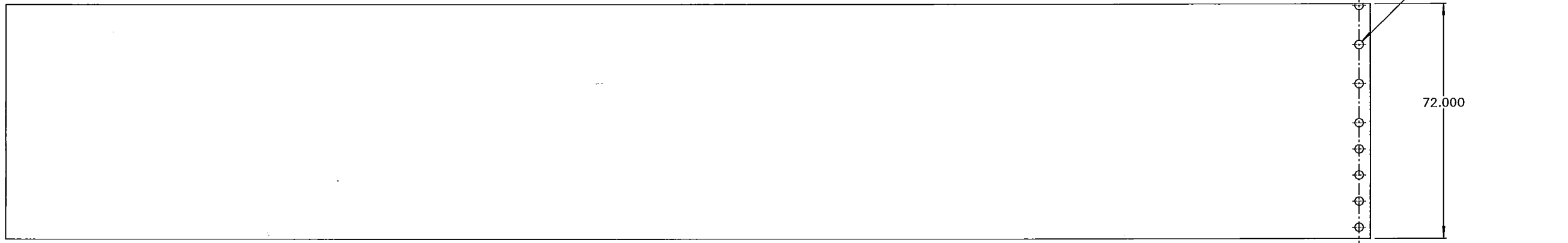
SHEET 1 of 8

DWG. NO. 1

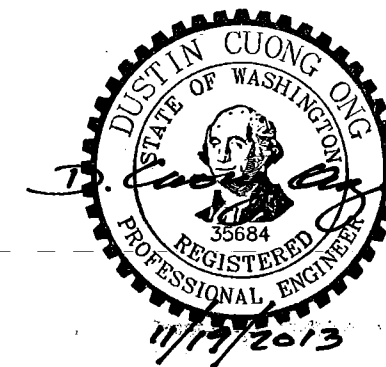


PLAN VIEW – ① TANK SKIN

1/4"



ELEVATION VIEW – ① TANK SKIN



JCR FABRICATION
516 MULOCK STREET
ONTONAGON, MI. 49953
(906) 235-2683

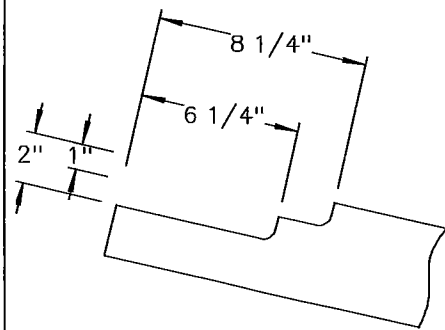
FRAC TANK SKIN DETAIL

DRAWN: GAH
DATE: 11/18/13

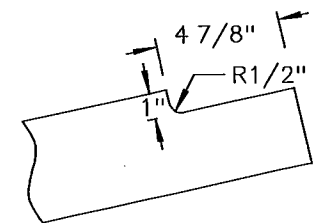
REV.
DATE:

SHEET 2 of 8

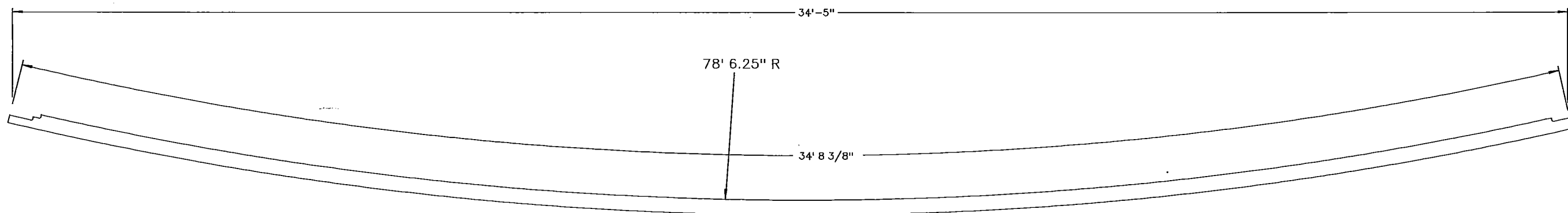
DWG. NO. 1



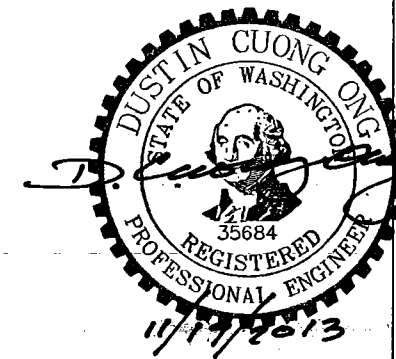
RIB END DETAIL



RIB END DETAIL



PLAN VIEW - ② RIB



JCR FABRICATION
516 MULOCK STREET
ONTONAGON, MI. 49953
(906) 235-2683

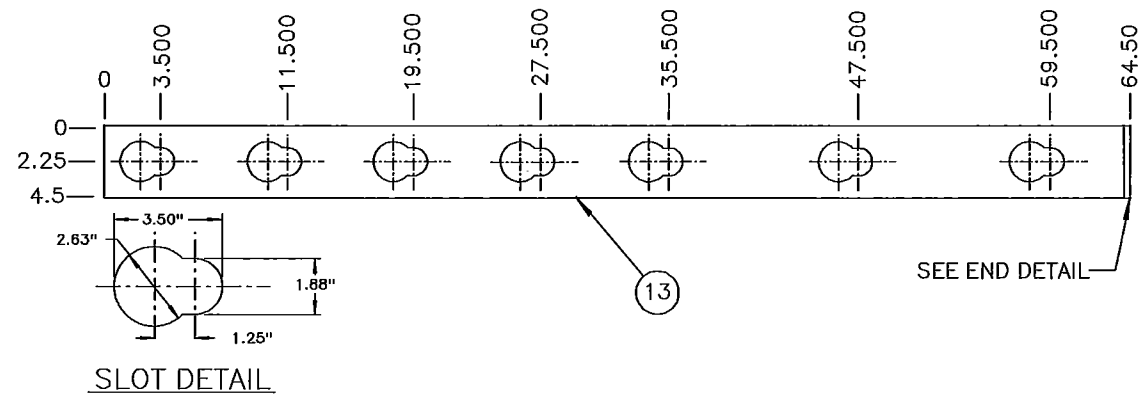
FRAC TANK RIB DETAIL

DRAWN: GAH
DATE: 11/18/13

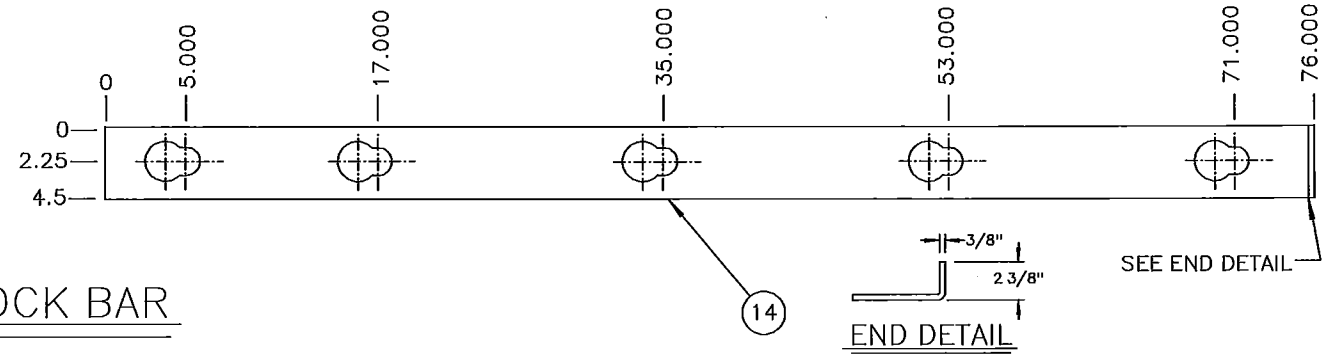
REV.
DATE:

SHEET 3 of 8

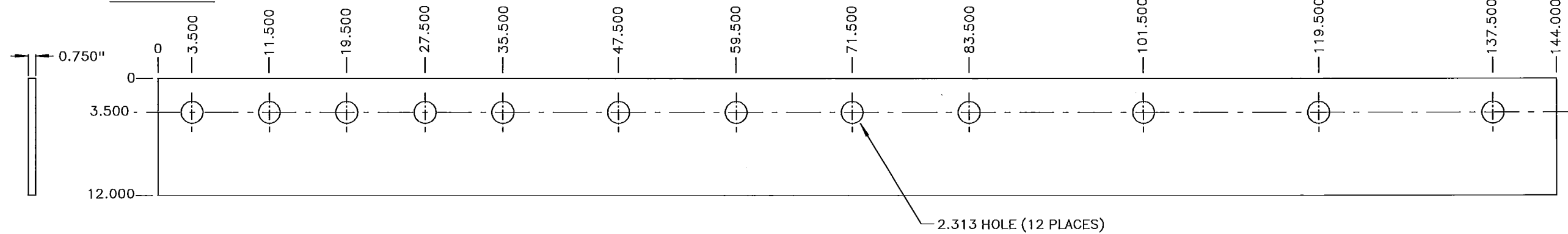
DWG. NO. 1



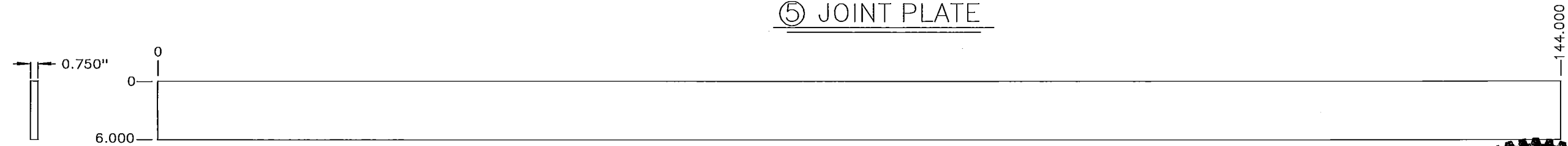
LOCK BAR



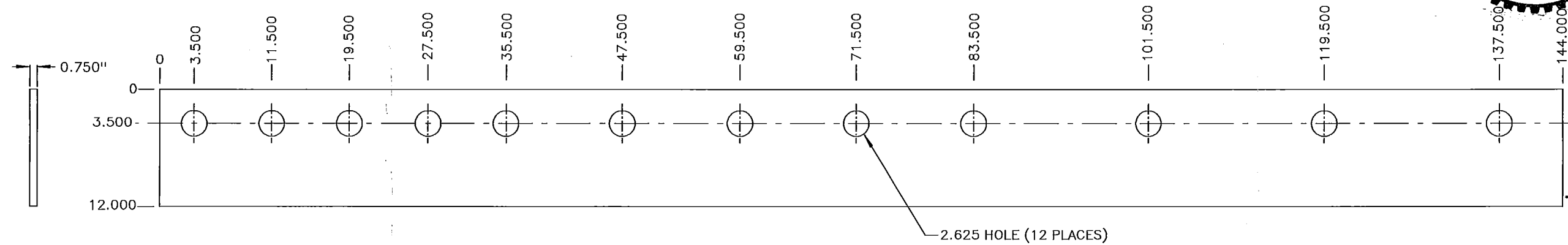
END DETAIL



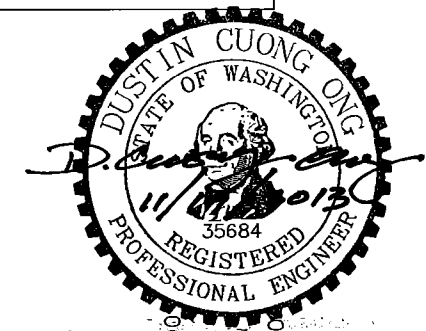
⑤ JOINT PLATE



⑧ JOINT PLATE



⑦ JOINT PLATE



JCR FABRICATION
516 MULOCK STREET
ONTONAGON, MI. 49953
(906) 235-2683

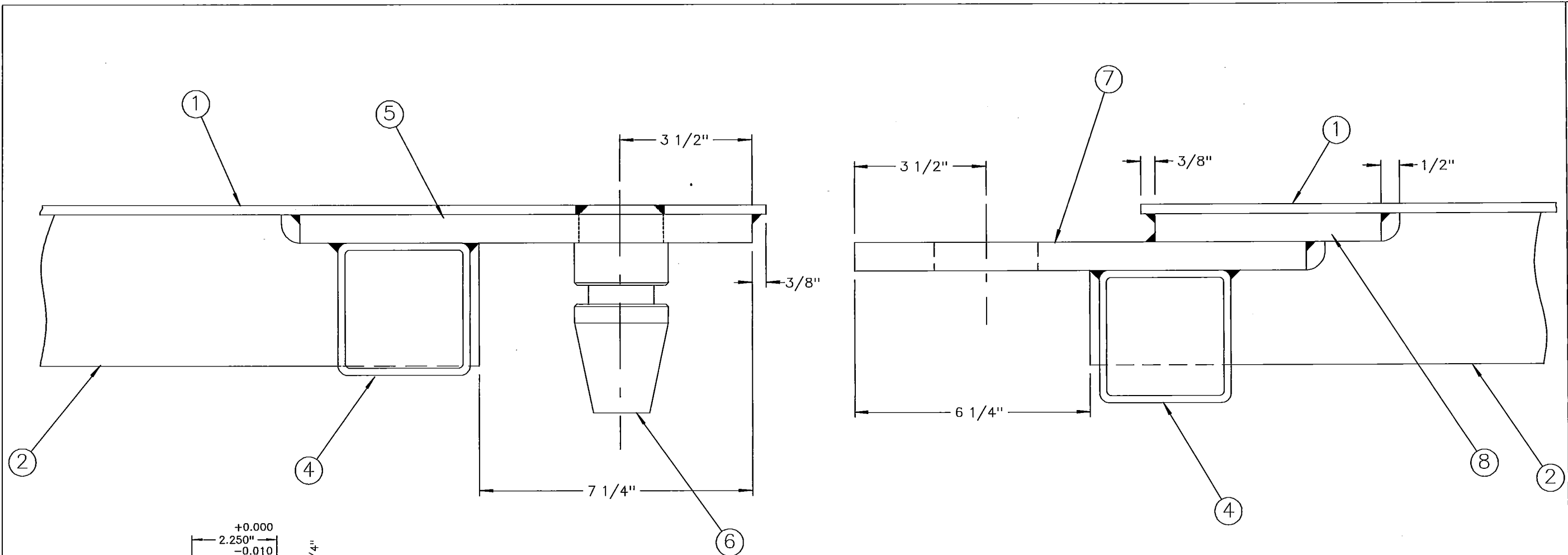
FRAC TANK END PLATE DETAILS

DRAWN: GAH
DATE: 11/18/13

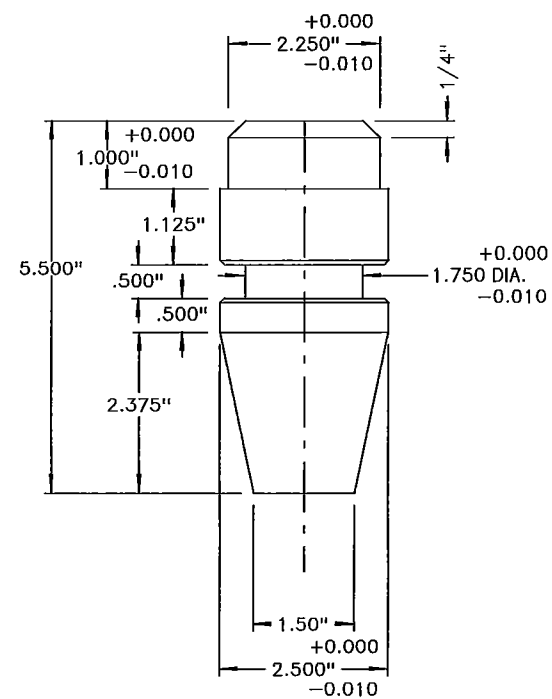
REV.
DATE:

SHEET 4 of 8

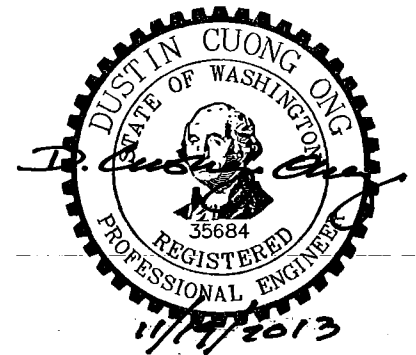
DWG. NO. 1



TANK JOINT DETAIL



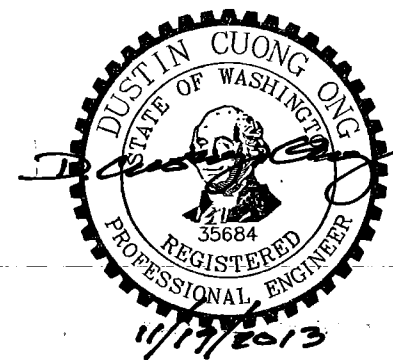
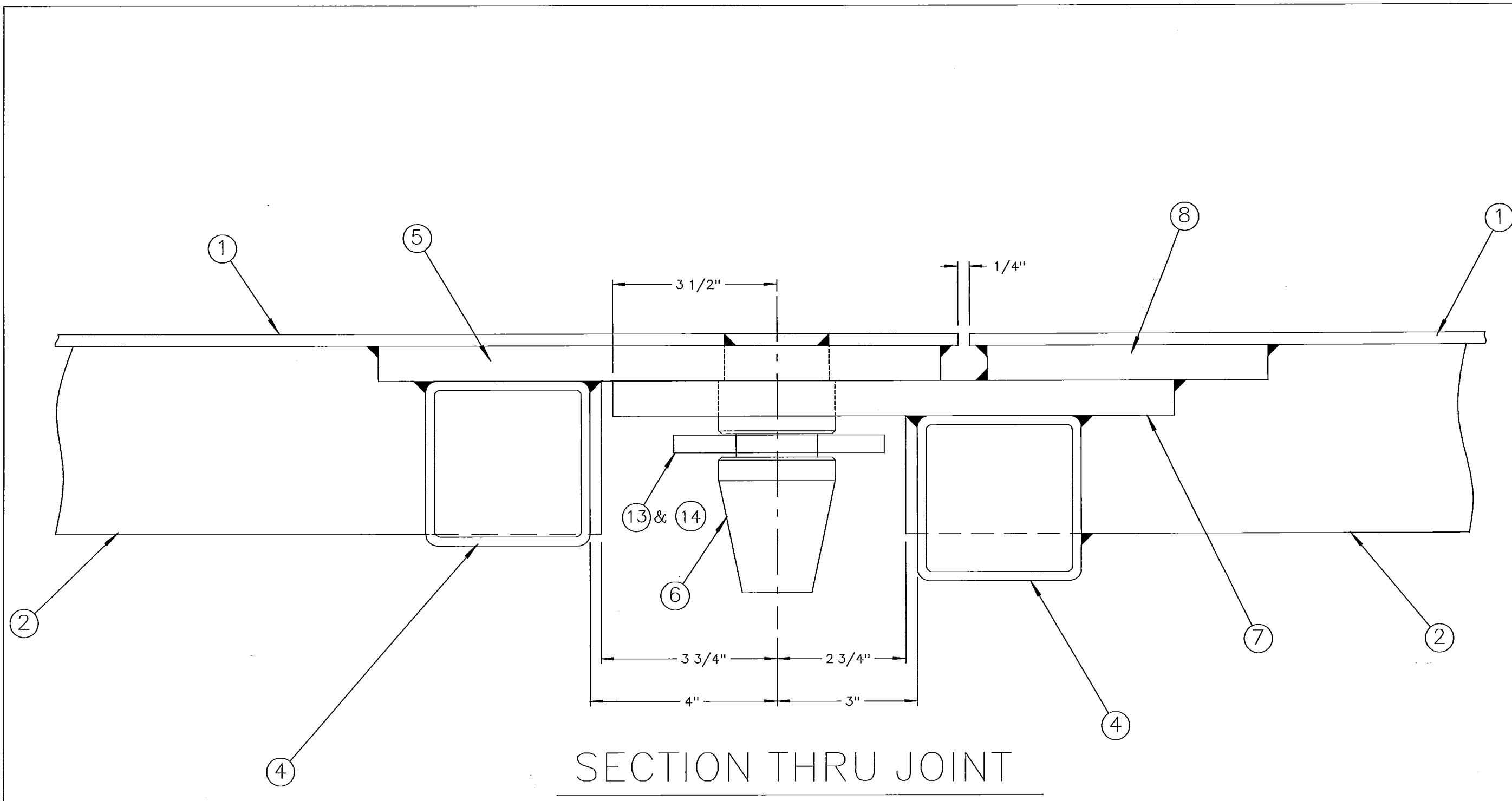
⑥ PIN DETAIL



JCR FABRICATION
516 MULOCK STREET
ONTONAGON, MI. 49953
(906) 235-2683

FRAC TANK JOINT DETAILS

DRAWN: GAH
DATE: 11/18/13
REV.
DATE:
SHEET 5 of 8
DWG. NO. 1



JCR FABRICATION
516 MULOCK STREET
ONTONAGON, MI. 49953
(906) 235-2683

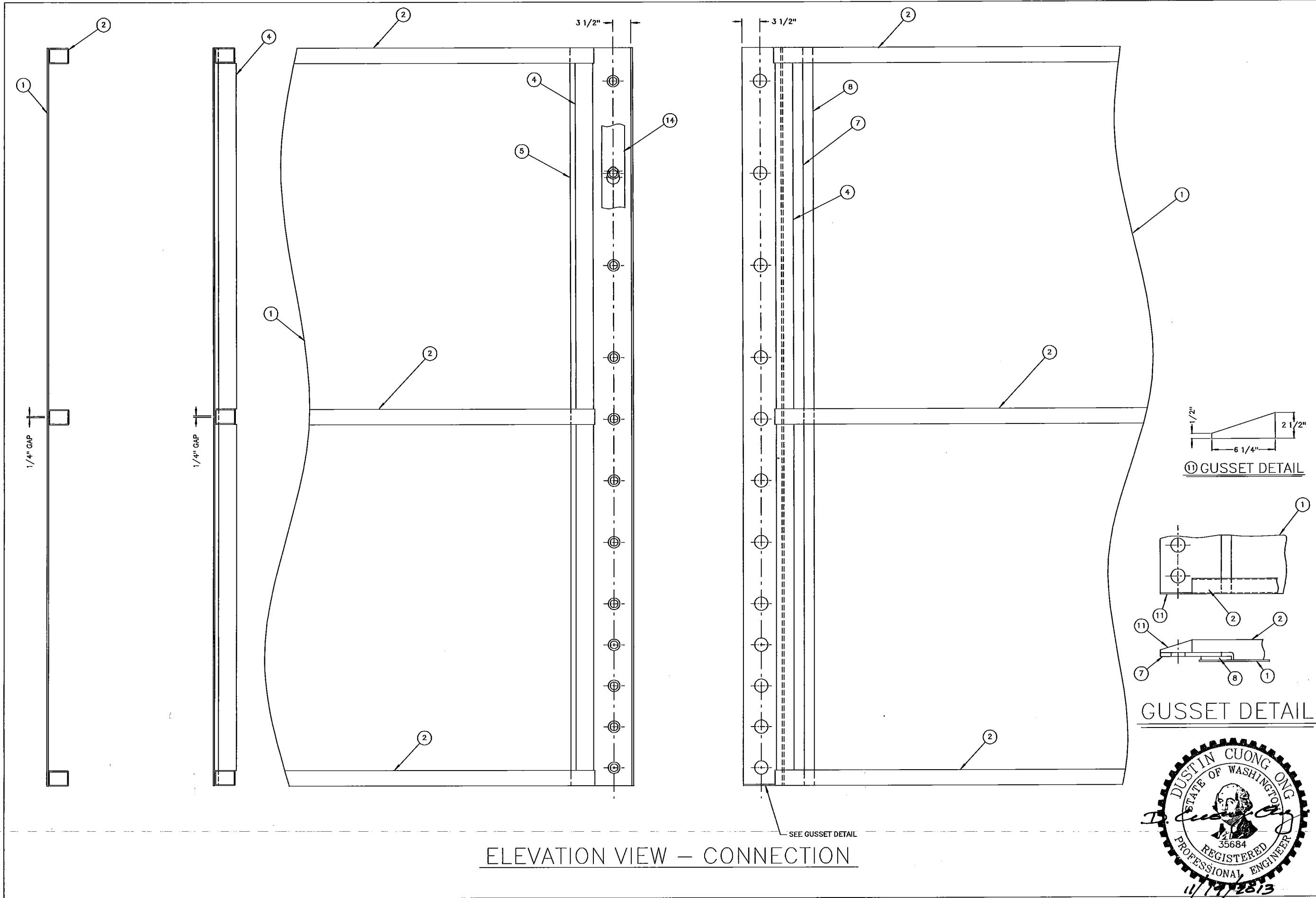
FRAC TANK JOINT DETAILS

DRAWN: GAH
DATE: 11/18/13

REV.
DATE:

SHEET 6 of 8

DWG. NO. 1

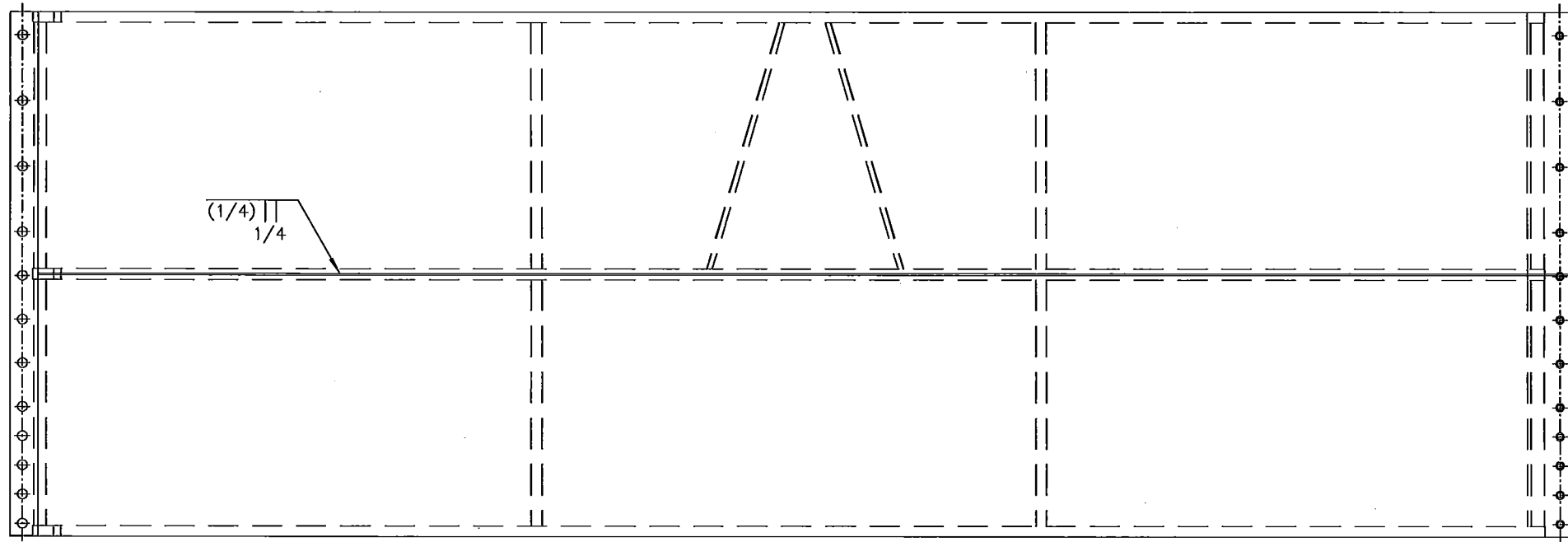


ELEVATION VIEW – CONNECTION

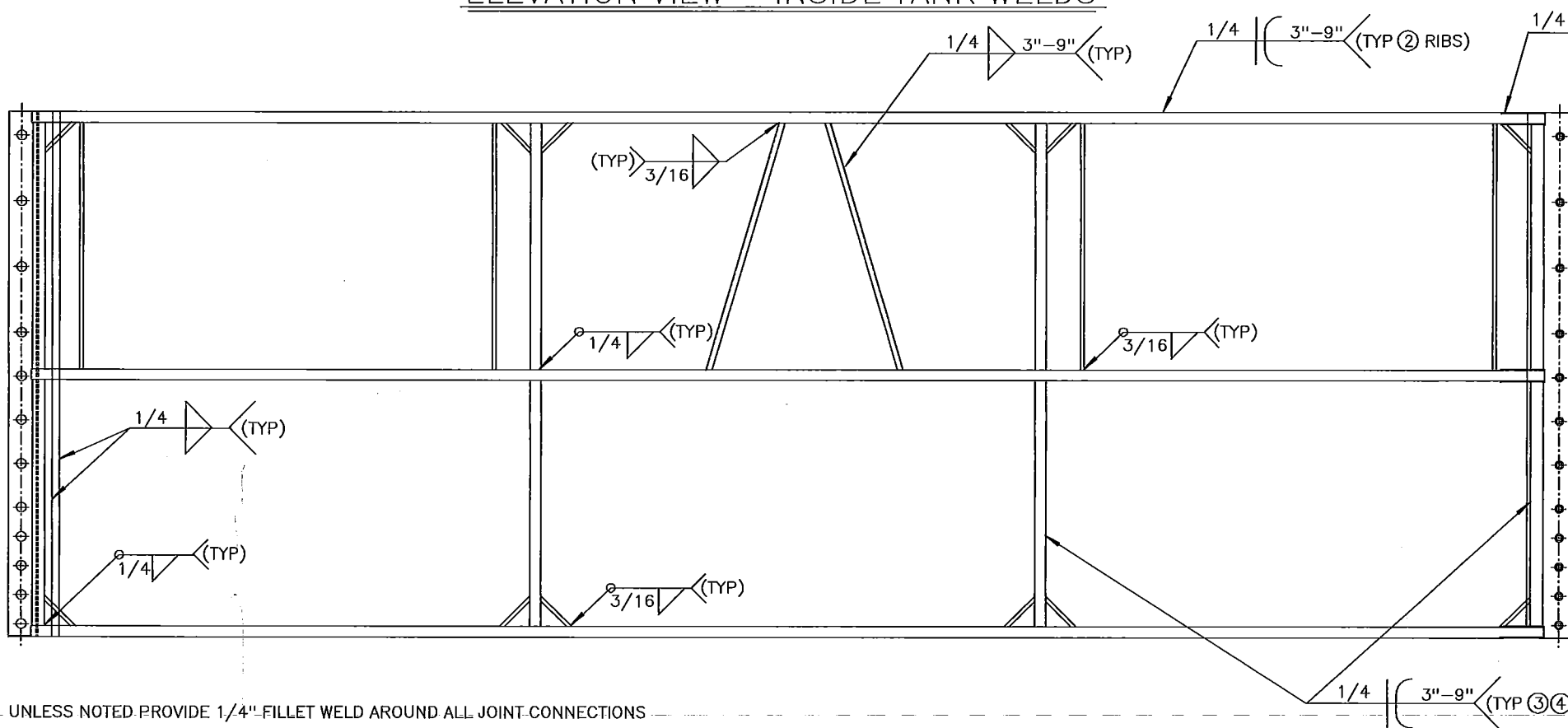
JCR FABRICATION
516 MULOCK STREET
ONTONAGON, MI. 49953
(906) 235-2683

FRAC TANK
JOINT DETAILS

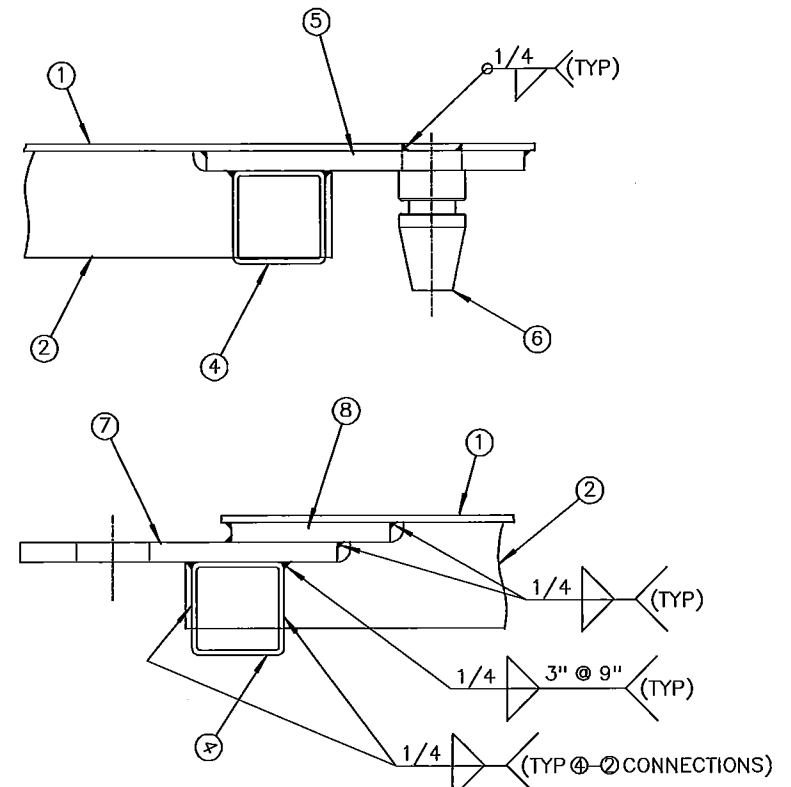
DRAWN: GAH
DATE: 11/18/13
REV.
DATE:
SHEET 7 of 8
DWG. NO. 1



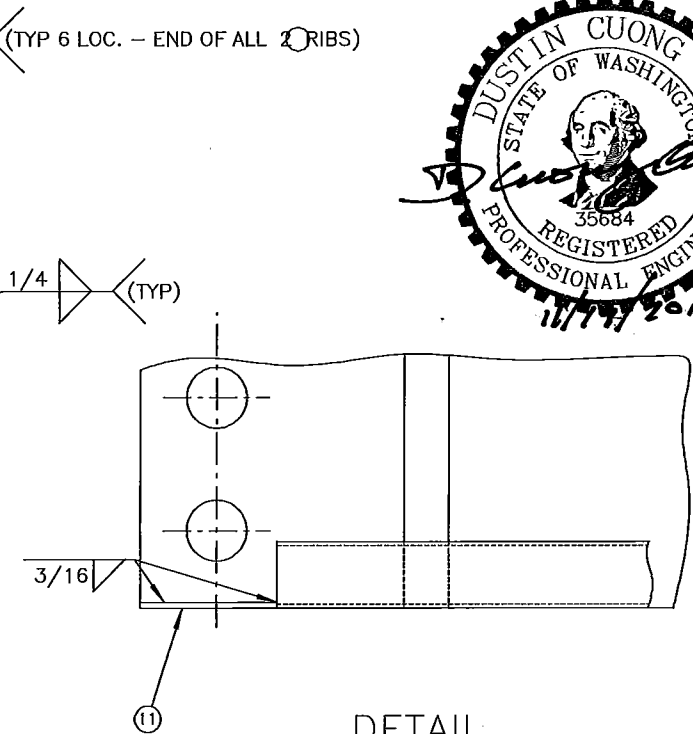
ELEVATION VIEW – INSIDE TANK WELDS



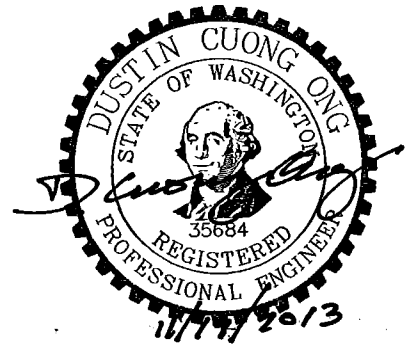
ELEVATION VIEW – OUTSIDE TANK WELDS



TANK JOINT DETAIL



DETAIL



JCR FABRICATION
516 MULOCK STREET
ONTONAGON, MI. 49953
(906) 235-2683

FRAC TANK WELD LOCATIONS

DRAWN: GAH
DATE: 11/18/13

REV.
DATE:

SHEET 8 of 8

DWG. NO. 1