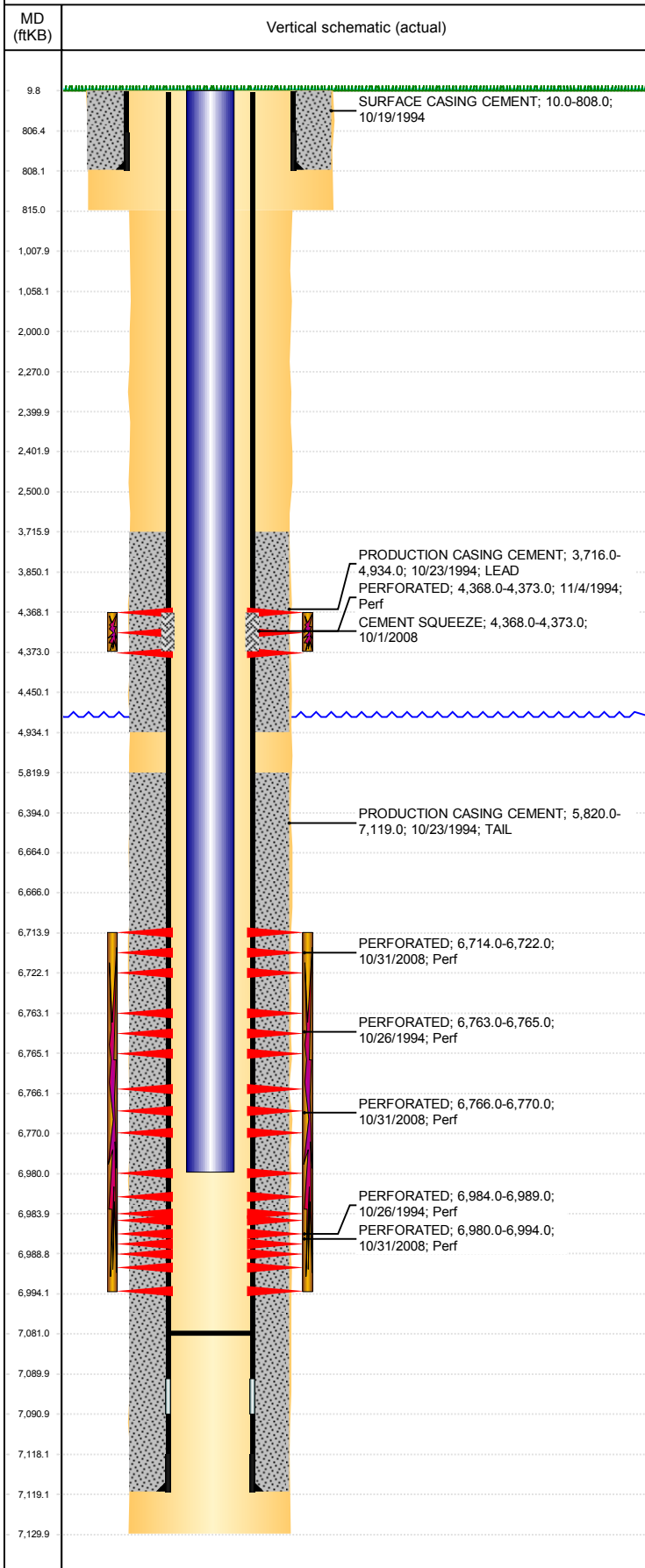


Well Name: HSR-LDS B 3-17

VERTICAL - ORIGINAL HOLE, 10/16/2018 1:14:46 PM



Well Header									
API 05-123-18507		Business Unit DJ BASIN		District 15		Well Config VERTICAL			
KB - GL / MSL (ft... 10.00		Spud Date 10/18/1994		P & A Date		Well Production Status SI			SoRT No
Comment LIMITED ENTRY ORIGINAL FRAC & REFRAC. 10/23/08- TIH W/ GLOBE BASKET. STILL DOWNHOLE?? 10/30/08 - CLEAN OUT TO PB. DEPTH??? STATE SHOWS SHUT IN SINCE MARCH 2017. FIELD OPERATIONS NOTICE - FLOWLINES ABANDONED PER RULE 1103, RCVD 6/28/17.									
Surface Location (Congressional)									
Qtr 3 NE	Qtr 4 NW	Section 17	Twnshp 3	Twshp... N	Range 64	Rng E/... W	Actual Latitude (°) 40.23081690		Actual Longitude (°) -104.57800180
Wellbore Sections									
Section Des		Size (in)			Act Top, MD (ftKB)		Act Btm, MD (ftKB)		
SURFACE		12 1/4			10		815		
PRODUCTION		7 7/8			815		7,130		
Casing Strings									
Csg Des		Run Date		OD (in)	Wt/Len (lb/ft)	Grade	Top, MD (ftKB)		MD (ftKB)
Surface		10/19/1994		8 5/8	24.00		10.0		808.0
Production		10/23/1994		4 1/2	11.60	I-70	10.0		7,119.0
Cement									
Des				Start Date		Top (ftKB)		Btm (ftKB)	
SURFACE CASING CEMENT				10/19/1994		10.0		808.0	
PRODUCTION CASING CEMENT				10/23/1994		3,716.0		4,934.0	
PRODUCTION CASING CEMENT				10/23/1994		5,820.0		7,119.0	
CEMENT SQUEEZE				10/1/2008		4,368.0		4,373.0	
Zone Statuses									
Zone Name		Status Date		Status	Fluid Type	Job			Prod Method
NIOBRARA		11/18/2008		PR	Water	RE-FRAC, 9/29/2008 00:00			Flowing
NIOBRARA		5/16/2014		PR	Water				Flowing
CODELL		5/16/2014		PR	Water				Flowing
CODELL		3/10/2017		SI					
SUSSEX		11/19/1994		PR		DRILLING/COMPLETION - ORIGINAL, 10/18/199...			Flowing
SUSSEX		10/1/2008		AB		RE-FRAC, 9/29/2008 00:00			
Perforation Data									
Linked Zone		Brnch/Stg		Entered Shot Total		Top (ftKB)		Btm (ftKB)	
SUSSEX, ORIGINAL HOLE				12		4,368.00		4,373.00	
NIOBRARA, ORIGINAL HOLE		A		24		6,714.00		6,722.00	
NIOBRARA, ORIGINAL HOLE		B		6		6,763.00		6,765.00	
NIOBRARA, ORIGINAL HOLE		B		12		6,766.00		6,770.00	
CODELL, ORIGINAL HOLE				28		6,980.00		6,994.00	
CODELL, ORIGINAL HOLE				12		6,984.00		6,989.00	
Stimulation Intervals									
Zone				Start Date		Top (ftKB)		Btm (ftKB)	
SUSSEX, ORIGINAL HOLE				11/7/1994		4,368.0		4,373.0	
NIOBRARA-CODELL, ORIGINAL HOLE				11/6/2008		6,714.0		6,994.0	
NIOBRARA-CODELL, ORIGINAL HOLE				10/31/1994		6,763.0		6,989.0	
Other In Hole									
Run Date		Des				OD (in)		Top (ftKB)	
Logs									
Date		Type				Top, MD (ftKB)		Btm, MD (ftKB)	
10/22/1994		COMPENSATED DENSITY				4,200.0		7,125.0	
10/22/1994		INDUCTION				800.0		7,124.0	
10/26/1994		CEMENT BOND				3,550.0		7,075.0	
Plug Back Total Depths									
Date		Type		Com				Depth (ftKB)	
10/23/1994		FLOAT COLLAR		TOP OF FLOAT COLLAR				7,113.0	
10/26/1994		FILL		DEPTH LOGGER ON CBL				7,081.0	