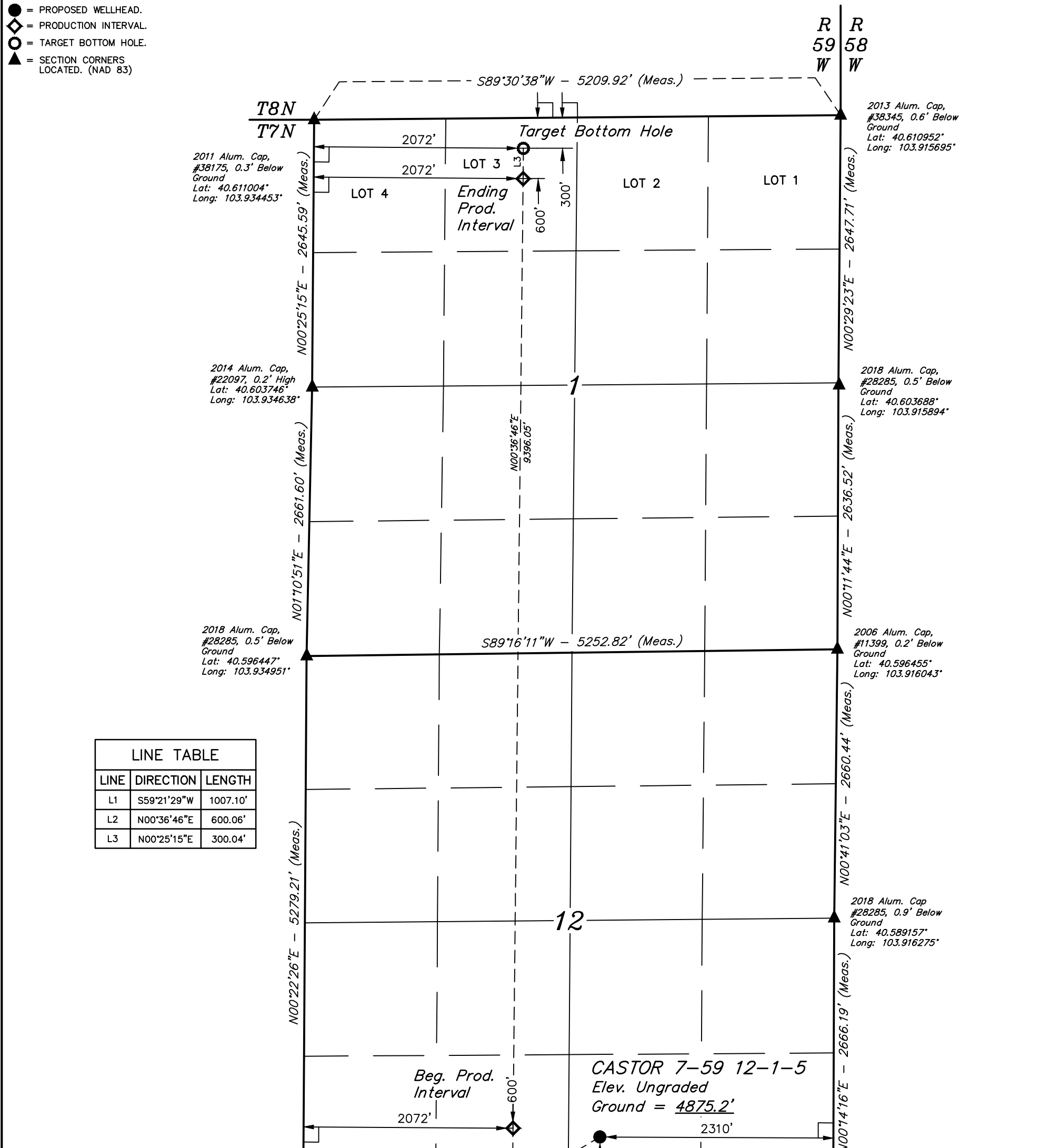


**LEGEND:**

- = 90° SYMBOL
- = PROPOSED WELLHEAD.
- ◇ = PRODUCTION INTERVAL.
- = TARGET BOTTOM HOLE.
- ▲ = SECTION CORNERS LOCATED. (NAD 83)

**T7N, R59W, 6th P.M.**



LINE TABLE		
LINE	DIRECTION	LENGTH
L1	S59°21'29"W	1007.10'
L2	N00°36'46"E	600.06'
L3	N00°25'15"E	300.04'

<b>SURFACE LOCATION</b> 510' FSL 2310' FWL
<b>NAD 83 (SURFACE LOCATION)</b> LATITUDE = 40°34'59.86" (40.583295°) LONGITUDE = 103°55'28.98" (103.924716°)
<b>NAD 27 (SURFACE LOCATION)</b> LATITUDE = 40°34'59.91" (40.583309°) LONGITUDE = 103°55'27.16" (103.924210°)
<b>STATE PLANE NAD 83 (CO. NORTH)</b> N: 1459222.17' E: 3437523.56'
<b>STATE PLANE NAD 27 (CO. NORTH)</b> N: 459221.44' E: 2437675.66'

2018 Alum. Cap, #28285, 1.0' Below Ground  
Lat: 40.581964°  
Long: 103.935305°

PDOP = 1.6



BEG. PROD. INTERVAL 600' FSL 2072' FWL	ENDING PROD. INTERVAL 600' FNL 2072' FWL	TARGET BOTTOM HOLE 300' FNL 2072' FWL
<b>NAD 83 (BEG. PROD. INTERVAL)</b> LATITUDE = 40°35'00.82" (40.583562°) LONGITUDE = 103°55'40.11" (103.927808°)	<b>NAD 83 (ENDING PROD. INTERVAL)</b> LATITUDE = 40°36'33.61" (40.609337°) LONGITUDE = 103°55'37.32" (103.927034°)	<b>NAD 83 (TARGET BOTTOM HOLE)</b> LATITUDE = 40°36'36.58" (40.610160°) LONGITUDE = 103°55'37.25" (103.927013°)
<b>NAD 27 (BEG. PROD. INTERVAL)</b> LATITUDE = 40°35'00.87" (40.583575°) LONGITUDE = 103°55'38.29" (103.927302°)	<b>NAD 27 (ENDING PROD. INTERVAL)</b> LATITUDE = 40°36'33.66" (40.609350°) LONGITUDE = 103°55'35.50" (103.926528°)	<b>NAD 27 (TARGET BOTTOM HOLE)</b> LATITUDE = 40°36'36.62" (40.610174°) LONGITUDE = 103°55'35.43" (103.926507°)
<b>STATE PLANE NAD 83 (CO. NORTH)</b> N: 1459304.10' E: 3436663.34'	<b>STATE PLANE NAD 83 (CO. NORTH)</b> N: 1468696.68' E: 3436711.67'	<b>STATE PLANE NAD 83 (CO. NORTH)</b> N: 1468996.61' E: 3436712.20'
<b>STATE PLANE NAD 27 (CO. NORTH)</b> N: 459303.35' E: 2436815.42'	<b>STATE PLANE NAD 27 (CO. NORTH)</b> N: 468695.76' E: 2436863.59'	<b>STATE PLANE NAD 27 (CO. NORTH)</b> N: 468995.69' E: 2436864.12'

THIS IS TO CERTIFY THAT THE ABOVE AND AS PREPARED FROM FIELD NOTES OF ACTUAL SURVEYS MADE BY ME OR UNDER MY SUPERVISION AND THAT THE SAME ARE TRUE AND CORRECT TO THE BEST OF MY KNOWLEDGE AND BELIEF.



**BASIS OF BEARINGS**  
TRANSVERSE MERCATOR PROJECTION WITH A CENTRAL MERIDIAN OF W105°00'00".

**BASIS OF ELEVATION**  
OPUS SOLUTION GENERATED NAVD 88



**UELS, LLC**  
Corporate Office \* 85 South 200 East  
Vernal, UT 84078 \* (435) 789-1017



**MORNING GUN EXPLORATION LLC**

**CASTOR 7-59 12-1-5**  
SW 1/4 SE 1/4, SECTION 12, T7N, R59W, 6th P.M.  
WELD COUNTY, COLORADO

<b>SURVEYED BY</b>	JARED CHRISTOPHER, D.E.	08-23-18	<b>SCALE</b>
<b>DRAWN BY</b>	K.M.R.	08-28-18	1" = 1000'

**WELL LOCATION PLAT**