



## **Ursa Operating Company, LLC**

Rio Blanco County, Colorado

BR C-240

BR C-240 42C-24-2-98

Wellbore #1

Design: Actual

## **End of Well Report**

07 August, 2018





<b>Company:</b>	Ursa Operating Company, LLC	<b>Local Co-ordinate Reference:</b>	Well BR C-24O 42C-24-2-98
<b>Project:</b>	Rio Blanco County, Colorado	<b>TVD Reference:</b>	BR C-24O 42C-24-2-98 @ 6325.5usft (Plan KB)
<b>Site:</b>	BR C-24O	<b>MD Reference:</b>	BR C-24O 42C-24-2-98 @ 6325.5usft (Plan KB)
<b>Well:</b>	BR C-24O 42C-24-2-98	<b>North Reference:</b>	True
<b>Wellbore:</b>	Wellbore #1	<b>Survey Calculation Method:</b>	Minimum Curvature
<b>Design:</b>	Actual	<b>Database:</b>	EDM 5000.1 Single User Db

<b>Project</b>	Rio Blanco County, Colorado		
<b>Map System:</b>	US State Plane 1983	<b>System Datum:</b>	Mean Sea Level
<b>Geo Datum:</b>	North American Datum 1983		
<b>Map Zone:</b>	Colorado Northern Zone		Using geodetic scale factor

<b>Site</b>	BR C-24O		
<b>Site Position:</b>		<b>Northing:</b>	1,203,233.71 usft
<b>From:</b>	Map	<b>Easting:</b>	2,203,189.00 usft
<b>Position Uncertainty:</b>	0.0 usft	<b>Slot Radius:</b>	13-3/16 "
		<b>Latitude:</b>	39.856238800
		<b>Longitude:</b>	-108.338695300
		<b>Grid Convergence:</b>	-1.83 °

Well		BR C-24O 42C-24-2-98, SHL: 39.8562473, -108.3387292				
Well Position	+N/-S	0.0 usft	Northing:	1,203,237.11 usft	Latitude:	39.856247300
	+E/-W	0.0 usft	Easting:	2,203,179.59 usft	Longitude:	-108.338729200
Position Uncertainty		0.0 usft	Wellhead Elevation:	6,325.5 usft	Ground Level:	6,304.5 usft

<b>Wellbore</b>	Wellbore #1				
<b>Magnetics</b>	<b>Model Name</b>	<b>Sample Date</b>	<b>Declination (°)</b>	<b>Dip Angle (°)</b>	<b>Field Strength (nT)</b>
	IGRF2015	6/2/2018	9.80	65.80	51,569

<b>Design</b>	Actual				
<b>Audit Notes:</b>					
<b>Version:</b>	1.0	<b>Phase:</b>	ACTUAL	<b>Tie On Depth:</b>	0.0
<b>Vertical Section:</b>	<b>Depth From (TVD) (usft)</b>	<b>+N/-S (usft)</b>	<b>+E/-W (usft)</b>	<b>Direction (°)</b>	
	0.0	0.0	0.0	9.65	

<b>Survey Program</b>	<b>Date</b>	8/7/2018			
<b>From (usft)</b>	<b>To (usft)</b>	<b>Survey (Wellbore)</b>	<b>Tool Name</b>	<b>Description</b>	
147.0	11,333.0	Actual (Wellbore #1)	MWD	MWD - Standard	



<b>Company:</b>	Ursa Operating Company, LLC	<b>Local Co-ordinate Reference:</b>	Well BR C-24O 42C-24-2-98
<b>Project:</b>	Rio Blanco County, Colorado	<b>TVD Reference:</b>	BR C-24O 42C-24-2-98 @ 6325.5usft (Plan KB)
<b>Site:</b>	BR C-24O	<b>MD Reference:</b>	BR C-24O 42C-24-2-98 @ 6325.5usft (Plan KB)
<b>Well:</b>	BR C-24O 42C-24-2-98	<b>North Reference:</b>	True
<b>Wellbore:</b>	Wellbore #1	<b>Survey Calculation Method:</b>	Minimum Curvature
<b>Design:</b>	Actual	<b>Database:</b>	EDM 5000.1 Single User Db

Survey									
MD (usft)	Inc (°)	Azi (azimuth) (°)	TVD (usft)	V. Sec (usft)	N/S (usft)	E/W (usft)	DLeg (°/100usft)	Build (°/100usft)	Turn (°/100usft)
0.0	0.00	0.00	0.0	0.0	0.0	0.0	0.00	0.00	0.00
147.0	0.75	3.78	147.0	1.0	1.0	0.1	0.51	0.51	0.00
241.0	0.66	6.28	241.0	2.1	2.1	0.2	0.10	-0.10	2.66
332.0	0.94	26.32	332.0	3.3	3.3	0.6	0.43	0.31	22.02
422.0	0.40	6.42	422.0	4.4	4.3	0.9	0.64	-0.60	-22.11
512.0	0.57	4.88	512.0	5.1	5.0	1.0	0.19	0.19	-1.71
602.0	0.04	64.91	602.0	5.6	5.5	1.1	0.61	-0.59	66.70
633.0	0.12	26.19	633.0	5.6	5.5	1.1	0.30	0.26	-124.90
694.0	0.00	197.23	694.0	5.7	5.6	1.1	0.20	-0.20	0.00
784.0	0.31	318.16	784.0	5.8	5.8	0.9	0.34	0.34	0.00
874.0	0.48	300.06	874.0	6.1	6.1	0.5	0.23	0.19	-20.11
904.0	0.40	302.17	904.0	6.2	6.3	0.3	0.27	-0.27	7.03
935.0	0.57	307.13	935.0	6.3	6.4	0.0	0.56	0.55	16.00
965.0	1.01	339.70	965.0	6.6	6.7	-0.2	2.04	1.47	108.57
996.0	1.85	8.00	996.0	7.4	7.5	-0.2	3.46	2.71	91.29
1,028.0	2.99	7.38	1,027.9	8.7	8.8	0.0	3.56	3.56	-1.94
1,059.0	3.83	9.62	1,058.9	10.6	10.7	0.3	2.74	2.71	7.23
1,091.0	4.70	13.01	1,090.8	12.9	13.0	0.7	2.83	2.72	10.59
1,123.0	5.49	14.59	1,122.7	15.8	15.7	1.4	2.51	2.47	4.94
1,154.0	6.59	11.69	1,153.5	19.0	18.9	2.2	3.68	3.55	-9.35
1,186.0	7.73	12.52	1,185.2	23.0	22.8	3.0	3.58	3.56	2.59
1,217.0	8.86	9.29	1,215.9	27.5	27.2	3.8	3.94	3.65	-10.42
1,249.0	9.62	10.24	1,247.5	32.6	32.3	4.7	2.42	2.37	2.97
1,280.0	10.59	9.32	1,278.0	38.0	37.6	5.6	3.17	3.13	-2.97
1,312.0	11.42	11.05	1,309.4	44.2	43.6	6.7	2.79	2.59	5.41
1,343.0	12.22	12.70	1,339.8	50.5	49.9	8.0	2.80	2.58	5.32
1,375.0	13.41	11.86	1,371.0	57.6	56.8	9.5	3.76	3.72	-2.62



<b>Company:</b>	Ursa Operating Company, LLC	<b>Local Co-ordinate Reference:</b>	Well BR C-24O 42C-24-2-98
<b>Project:</b>	Rio Blanco County, Colorado	<b>TVD Reference:</b>	BR C-24O 42C-24-2-98 @ 6325.5usft (Plan KB)
<b>Site:</b>	BR C-24O	<b>MD Reference:</b>	BR C-24O 42C-24-2-98 @ 6325.5usft (Plan KB)
<b>Well:</b>	BR C-24O 42C-24-2-98	<b>North Reference:</b>	True
<b>Wellbore:</b>	Wellbore #1	<b>Survey Calculation Method:</b>	Minimum Curvature
<b>Design:</b>	Actual	<b>Database:</b>	EDM 5000.1 Single User Db

Survey										
MD (usft)	Inc (°)	Azi (azimuth) (°)	TVD (usft)	V. Sec (usft)	N/S (usft)	E/W (usft)	DLeg (°/100usft)	Build (°/100usft)	Turn (°/100usft)	
1,406.0	14.59	10.37	1,401.0	65.1	64.2	11.0	3.98	3.81	-4.81	
1,438.0	15.79	8.95	1,431.9	73.5	72.4	12.4	3.93	3.75	-4.44	
1,470.0	17.23	9.76	1,462.6	82.6	81.4	13.8	4.56	4.50	2.53	
1,501.0	18.76	11.31	1,492.1	92.1	90.8	15.6	5.17	4.94	5.00	
1,533.0	20.13	12.00	1,522.3	102.8	101.2	17.8	4.34	4.28	2.16	
1,564.0	21.53	9.76	1,551.2	113.8	112.1	19.8	5.20	4.52	-7.23	
1,596.0	22.76	9.49	1,580.9	125.9	124.0	21.8	3.86	3.84	-0.84	
1,628.0	23.69	8.48	1,610.3	138.5	136.4	23.8	3.16	2.91	-3.16	
1,659.0	24.92	7.69	1,638.5	151.2	149.1	25.6	4.10	3.97	-2.55	
1,691.0	25.93	6.90	1,667.4	165.0	162.7	27.4	3.33	3.16	-2.47	
1,722.0	26.92	8.20	1,695.2	178.7	176.4	29.2	3.70	3.19	4.19	
1,754.0	27.91	10.20	1,723.6	193.5	190.9	31.5	4.22	3.09	6.25	
1,785.0	28.30	10.77	1,750.9	208.1	205.3	34.2	1.53	1.26	1.84	
1,817.0	28.17	11.69	1,779.1	223.2	220.1	37.1	1.42	-0.41	2.87	
1,848.0	28.61	10.72	1,806.4	237.9	234.6	40.0	2.06	1.42	-3.13	
1,880.0	29.36	11.21	1,834.4	253.5	249.8	42.9	2.46	2.34	1.53	
1,912.0	29.97	11.98	1,862.2	269.3	265.3	46.1	2.25	1.91	2.41	
1,943.0	31.09	10.98	1,888.9	285.0	280.7	49.3	3.97	3.61	-3.23	
2,006.0	32.34	9.54	1,942.5	318.1	313.3	55.2	2.32	1.98	-2.29	
2,101.0	32.61	7.82	2,022.6	369.1	363.7	62.8	1.01	0.28	-1.81	
2,196.0	32.48	7.56	2,102.7	420.2	414.4	69.7	0.20	-0.14	-0.27	
2,290.0	33.86	8.93	2,181.4	471.6	465.3	77.1	1.67	1.47	1.46	
2,385.0	34.98	9.49	2,259.8	525.3	518.3	85.7	1.23	1.18	0.59	
2,480.0	34.32	8.86	2,337.9	579.3	571.6	94.3	0.79	-0.69	-0.66	
2,575.0	33.09	7.78	2,417.0	632.0	623.8	101.9	1.44	-1.29	-1.14	
2,670.0	32.78	9.71	2,496.7	683.7	674.8	109.8	1.15	-0.33	2.03	
2,765.0	31.90	9.93	2,577.0	734.5	724.9	118.4	0.93	-0.93	0.23	



<b>Company:</b>	Ursa Operating Company, LLC	<b>Local Co-ordinate Reference:</b>	Well BR C-24O 42C-24-2-98
<b>Project:</b>	Rio Blanco County, Colorado	<b>TVD Reference:</b>	BR C-24O 42C-24-2-98 @ 6325.5usft (Plan KB)
<b>Site:</b>	BR C-24O	<b>MD Reference:</b>	BR C-24O 42C-24-2-98 @ 6325.5usft (Plan KB)
<b>Well:</b>	BR C-24O 42C-24-2-98	<b>North Reference:</b>	True
<b>Wellbore:</b>	Wellbore #1	<b>Survey Calculation Method:</b>	Minimum Curvature
<b>Design:</b>	Actual	<b>Database:</b>	EDM 5000.1 Single User Db

Survey										
MD (usft)	Inc (°)	Azi (azimuth) (°)	TVD (usft)	V. Sec (usft)	N/S (usft)	E/W (usft)	DLeg (°/100usft)	Build (°/100usft)	Turn (°/100usft)	
2,860.0	32.83	10.06	2,657.2	785.3	775.0	127.3	0.98	0.98	0.14	
2,955.0	30.81	8.70	2,737.9	835.4	824.4	135.4	2.26	-2.13	-1.43	
3,049.0	30.85	10.11	2,818.6	883.6	871.9	143.3	0.77	0.04	1.50	
3,144.0	31.64	11.16	2,899.9	932.9	920.3	152.4	1.01	0.83	1.11	
3,239.0	31.95	12.09	2,980.6	982.9	969.4	162.5	0.61	0.33	0.98	
3,334.0	33.55	11.18	3,060.5	1,034.2	1,019.7	172.9	1.76	1.68	-0.96	
3,429.0	33.09	11.03	3,139.9	1,086.4	1,070.9	182.9	0.49	-0.48	-0.16	
3,524.0	33.71	9.80	3,219.2	1,138.7	1,122.3	192.4	0.97	0.65	-1.29	
3,618.0	33.09	9.80	3,297.7	1,190.4	1,173.3	201.2	0.66	-0.66	0.00	
3,713.0	33.62	9.49	3,377.0	1,242.7	1,224.8	209.9	0.59	0.56	-0.33	
3,820.0	32.34	9.18	3,466.8	1,300.9	1,282.3	219.4	1.21	-1.20	-0.29	
3,893.0	31.90	10.02	3,528.6	1,339.7	1,320.6	225.8	0.86	-0.60	1.15	
3,988.0	30.89	8.92	3,609.7	1,389.2	1,369.4	234.0	1.22	-1.06	-1.16	
4,082.0	27.86	9.67	3,691.6	1,435.3	1,414.9	241.4	3.25	-3.22	0.80	
4,177.0	26.80	8.41	3,776.0	1,478.9	1,457.9	248.3	1.27	-1.12	-1.33	
4,272.0	27.47	9.71	3,860.5	1,522.2	1,500.7	255.1	0.94	0.71	1.37	
4,366.0	27.86	10.24	3,943.8	1,565.9	1,543.7	262.7	0.49	0.41	0.56	
4,461.0	29.49	13.32	4,027.1	1,611.4	1,588.3	272.0	2.32	1.72	3.24	
4,556.0	28.92	13.01	4,110.1	1,657.7	1,633.4	282.6	0.62	-0.60	-0.33	
4,651.0	29.79	11.96	4,192.9	1,704.2	1,678.9	292.6	1.06	0.92	-1.11	
4,746.0	28.34	10.72	4,275.9	1,750.3	1,724.2	301.7	1.65	-1.53	-1.31	
4,840.0	28.26	10.02	4,358.7	1,794.9	1,768.0	309.7	0.36	-0.09	-0.74	
4,935.0	27.20	9.23	4,442.8	1,839.1	1,811.6	317.1	1.18	-1.12	-0.83	
5,030.0	27.03	9.36	4,527.3	1,882.4	1,854.3	324.1	0.19	-0.18	0.14	
5,125.0	25.05	6.96	4,612.7	1,924.1	1,895.6	330.1	2.36	-2.08	-2.53	
5,219.0	24.96	6.64	4,697.9	1,963.8	1,935.0	334.8	0.17	-0.10	-0.34	
5,314.0	24.65	8.48	4,784.1	2,003.6	1,974.5	340.0	0.88	-0.33	1.94	



<b>Company:</b>	Ursa Operating Company, LLC	<b>Local Co-ordinate Reference:</b>	Well BR C-24O 42C-24-2-98
<b>Project:</b>	Rio Blanco County, Colorado	<b>TVD Reference:</b>	BR C-24O 42C-24-2-98 @ 6325.5usft (Plan KB)
<b>Site:</b>	BR C-24O	<b>MD Reference:</b>	BR C-24O 42C-24-2-98 @ 6325.5usft (Plan KB)
<b>Well:</b>	BR C-24O 42C-24-2-98	<b>North Reference:</b>	True
<b>Wellbore:</b>	Wellbore #1	<b>Survey Calculation Method:</b>	Minimum Curvature
<b>Design:</b>	Actual	<b>Database:</b>	EDM 5000.1 Single User Db

Survey										
MD (usft)	Inc (°)	Azi (azimuth) (°)	TVD (usft)	V. Sec (usft)	N/S (usft)	E/W (usft)	DLeg (°/100usft)	Build (°/100usft)	Turn (°/100usft)	
5,409.0	23.99	7.65	4,870.7	2,042.7	2,013.3	345.5	0.78	-0.69	-0.87	
5,504.0	24.39	9.54	4,957.3	2,081.6	2,051.7	351.3	0.92	0.42	1.99	
5,599.0	24.58	7.86	5,043.8	2,121.0	2,090.7	357.3	0.76	0.20	-1.77	
5,694.0	25.00	11.56	5,130.0	2,160.8	2,129.9	364.0	1.69	0.44	3.89	
5,789.0	24.96	9.71	5,216.1	2,200.9	2,169.3	371.4	0.82	-0.04	-1.95	
5,884.0	26.06	9.84	5,301.9	2,241.8	2,209.6	378.4	1.16	1.16	0.14	
5,979.0	24.52	9.54	5,387.8	2,282.4	2,249.7	385.2	1.63	-1.62	-0.32	
6,074.0	23.21	8.34	5,474.7	2,320.8	2,287.6	391.2	1.47	-1.38	-1.26	
6,168.0	22.30	12.42	5,561.3	2,357.2	2,323.4	397.7	1.94	-0.97	4.34	
6,263.0	20.83	10.28	5,649.7	2,392.0	2,357.6	404.6	1.75	-1.55	-2.25	
6,358.0	19.07	10.11	5,739.0	2,424.5	2,389.5	410.3	1.85	-1.85	-0.18	
6,453.0	17.36	13.97	5,829.2	2,454.1	2,418.5	416.5	2.20	-1.80	4.06	
6,548.0	15.07	12.52	5,920.4	2,480.6	2,444.3	422.6	2.45	-2.41	-1.53	
6,643.0	12.81	14.21	6,012.6	2,503.4	2,466.6	427.8	2.42	-2.38	1.78	
6,695.2	12.60	12.01	6,063.5	2,514.9	2,477.8	430.4	1.01	-0.40	-4.22	
42C-24-2-98 TGT										
6,738.0	12.44	10.15	6,105.3	2,524.2	2,486.9	432.2	1.01	-0.37	-4.34	
6,833.0	10.28	5.54	6,198.5	2,542.8	2,505.4	434.8	2.46	-2.27	-4.85	
6,928.0	8.00	10.11	6,292.3	2,557.9	2,520.3	436.8	2.52	-2.40	4.81	
7,023.0	6.55	14.85	6,386.5	2,569.9	2,532.1	439.4	1.65	-1.53	4.99	
7,118.0	5.84	24.70	6,480.9	2,580.0	2,541.7	442.8	1.34	-0.75	10.37	
7,213.0	4.88	30.54	6,575.5	2,588.4	2,549.6	446.9	1.16	-1.01	6.15	
7,307.0	4.53	27.51	6,669.2	2,595.7	2,556.3	450.6	0.46	-0.37	-3.22	
7,402.0	4.17	22.15	6,763.9	2,602.6	2,562.9	453.6	0.57	-0.38	-5.64	
7,497.0	3.21	15.21	6,858.7	2,608.7	2,568.6	455.6	1.11	-1.01	-7.31	
7,526.0	3.03	12.62	6,887.7	2,610.2	2,570.2	456.0	0.79	-0.62	-8.93	
7,621.0	1.93	19.69	6,982.6	2,614.3	2,574.1	457.1	1.20	-1.16	7.44	

<b>Company:</b>	Ursa Operating Company, LLC	<b>Local Co-ordinate Reference:</b>	Well BR C-24O 42C-24-2-98
<b>Project:</b>	Rio Blanco County, Colorado	<b>TVD Reference:</b>	BR C-24O 42C-24-2-98 @ 6325.5usft (Plan KB)
<b>Site:</b>	BR C-24O	<b>MD Reference:</b>	BR C-24O 42C-24-2-98 @ 6325.5usft (Plan KB)
<b>Well:</b>	BR C-24O 42C-24-2-98	<b>North Reference:</b>	True
<b>Wellbore:</b>	Wellbore #1	<b>Survey Calculation Method:</b>	Minimum Curvature
<b>Design:</b>	Actual	<b>Database:</b>	EDM 5000.1 Single User Db

Survey										
MD (usft)	Inc (°)	Azi (azimuth) (°)	TVD (usft)	V. Sec (usft)	N/S (usft)	E/W (usft)	DLeg (°/100usft)	Build (°/100usft)	Turn (°/100usft)	
7,716.0	2.59	57.44	7,077.5	2,617.3	2,576.8	459.5	1.67	0.69	39.74	
7,811.0	2.42	98.04	7,172.5	2,618.8	2,577.6	463.2	1.84	-0.18	42.74	
7,906.0	2.02	98.13	7,267.4	2,618.9	2,577.1	466.9	0.42	-0.42	0.09	
8,001.0	1.63	102.13	7,362.3	2,618.9	2,576.6	469.9	0.43	-0.41	4.21	
8,096.0	1.41	101.95	7,457.3	2,618.8	2,576.1	472.3	0.23	-0.23	-0.19	
8,190.0	1.32	105.95	7,551.3	2,618.6	2,575.5	474.5	0.14	-0.10	4.26	
8,285.0	1.23	117.82	7,646.3	2,618.2	2,574.8	476.5	0.29	-0.09	12.49	
8,380.0	1.10	139.83	7,741.2	2,617.3	2,573.6	477.9	0.49	-0.14	23.17	
8,474.0	1.10	167.70	7,835.2	2,615.9	2,572.0	478.7	0.56	0.00	29.65	
8,569.0	1.14	192.39	7,930.2	2,614.1	2,570.2	478.7	0.51	0.04	25.99	
8,664.0	1.32	198.46	8,025.2	2,612.1	2,568.3	478.2	0.23	0.19	6.39	
8,759.0	1.71	211.47	8,120.1	2,609.7	2,566.0	477.1	0.54	0.41	13.69	
8,854.0	1.76	214.67	8,215.1	2,607.0	2,563.6	475.5	0.11	0.05	3.37	
8,948.0	0.88	230.84	8,309.1	2,605.2	2,562.0	474.1	1.01	-0.94	17.20	
9,043.0	0.18	301.64	8,404.1	2,604.7	2,561.6	473.4	0.88	-0.74	74.53	
9,139.0	0.44	246.75	8,500.1	2,604.5	2,561.5	473.0	0.38	0.27	-57.18	
9,233.0	1.19	235.15	8,594.1	2,603.7	2,560.8	471.8	0.81	0.80	-12.34	
9,328.0	1.54	231.94	8,689.0	2,602.0	2,559.5	470.0	0.38	0.37	-3.38	
9,424.0	0.48	291.62	8,785.0	2,601.2	2,558.8	468.6	1.42	-1.10	62.17	
9,518.0	0.42	266.56	8,879.0	2,601.2	2,558.9	467.9	0.22	-0.06	-26.66	
9,615.0	1.10	229.40	8,976.0	2,600.4	2,558.3	466.9	0.83	0.70	-38.31	
9,710.0	1.70	234.60	9,071.0	2,598.7	2,556.9	465.0	0.64	0.63	5.47	
9,805.0	1.20	211.70	9,165.9	2,596.7	2,555.2	463.3	0.80	-0.53	-24.11	
9,900.0	0.50	127.10	9,260.9	2,595.6	2,554.1	463.2	1.32	-0.74	-89.05	
9,995.0	0.20	224.50	9,355.9	2,595.3	2,553.8	463.4	0.59	-0.32	102.53	
10,090.0	0.90	254.60	9,450.9	2,594.9	2,553.4	462.5	0.77	0.74	31.68	
10,185.0	2.00	282.70	9,545.9	2,594.6	2,553.6	460.2	1.35	1.16	29.58	



<b>Company:</b>	Ursa Operating Company, LLC	<b>Local Co-ordinate Reference:</b>	Well BR C-24O 42C-24-2-98
<b>Project:</b>	Rio Blanco County, Colorado	<b>TVD Reference:</b>	BR C-24O 42C-24-2-98 @ 6325.5usft (Plan KB)
<b>Site:</b>	BR C-24O	<b>MD Reference:</b>	BR C-24O 42C-24-2-98 @ 6325.5usft (Plan KB)
<b>Well:</b>	BR C-24O 42C-24-2-98	<b>North Reference:</b>	True
<b>Wellbore:</b>	Wellbore #1	<b>Survey Calculation Method:</b>	Minimum Curvature
<b>Design:</b>	Actual	<b>Database:</b>	EDM 5000.1 Single User Db

Survey										
MD (usft)	Inc (°)	Azi (azimuth) (°)	TVD (usft)	V. Sec (usft)	N/S (usft)	E/W (usft)	DLeg (°/100usft)	Build (°/100usft)	Turn (°/100usft)	
10,280.0	2.80	282.10	9,640.8	2,594.8	2,554.5	456.3	0.84	0.84	-0.63	
10,374.0	2.20	307.00	9,734.7	2,595.7	2,556.0	452.6	1.30	-0.64	26.49	
10,469.0	2.10	318.40	9,829.7	2,597.7	2,558.4	450.0	0.46	-0.11	12.00	
10,564.0	2.10	300.60	9,924.6	2,599.4	2,560.6	447.4	0.68	0.00	-18.74	
10,658.0	2.50	276.00	10,018.5	2,599.9	2,561.7	443.8	1.12	0.43	-26.17	
10,753.0	3.00	267.60	10,113.4	2,599.2	2,561.8	439.3	0.67	0.53	-8.84	
10,848.0	3.10	262.70	10,208.3	2,597.9	2,561.4	434.3	0.29	0.11	-5.16	
10,942.0	3.50	260.60	10,302.1	2,596.3	2,560.6	428.9	0.44	0.43	-2.23	
11,037.0	4.00	256.50	10,396.9	2,594.0	2,559.4	422.8	0.60	0.53	-4.32	
11,132.0	4.00	255.80	10,491.7	2,591.4	2,557.8	416.4	0.05	0.00	-0.74	
11,227.0	3.40	258.00	10,586.5	2,589.0	2,556.4	410.4	0.65	-0.63	2.32	
11,283.0	3.40	259.30	10,642.4	2,587.8	2,555.7	407.2	0.14	0.00	2.32	
Last PZD Survey										
11,333.0	3.40	259.30	10,692.3	2,586.8	2,555.2	404.3	0.00	0.00	0.00	
Straightline Projection to TD										

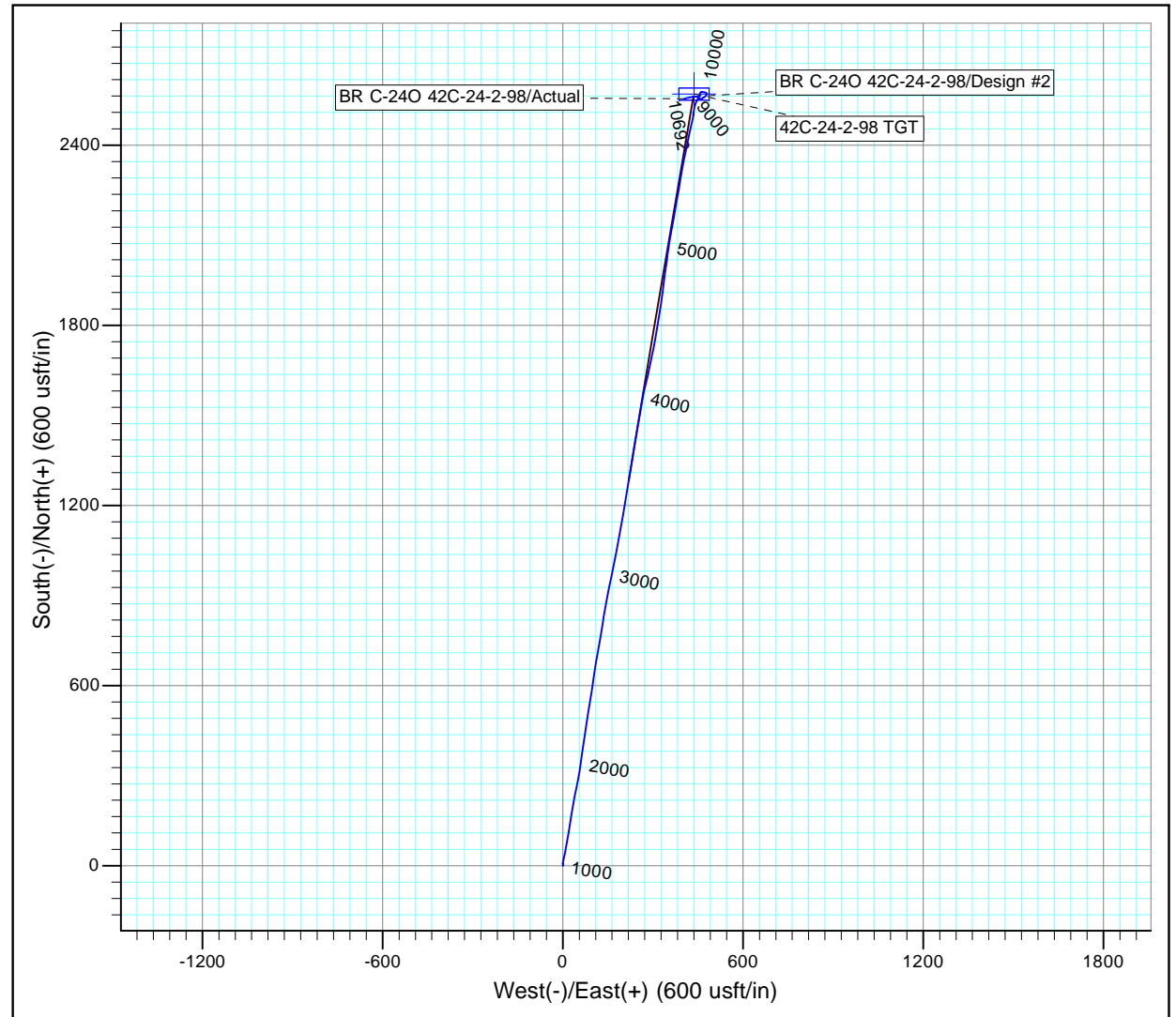
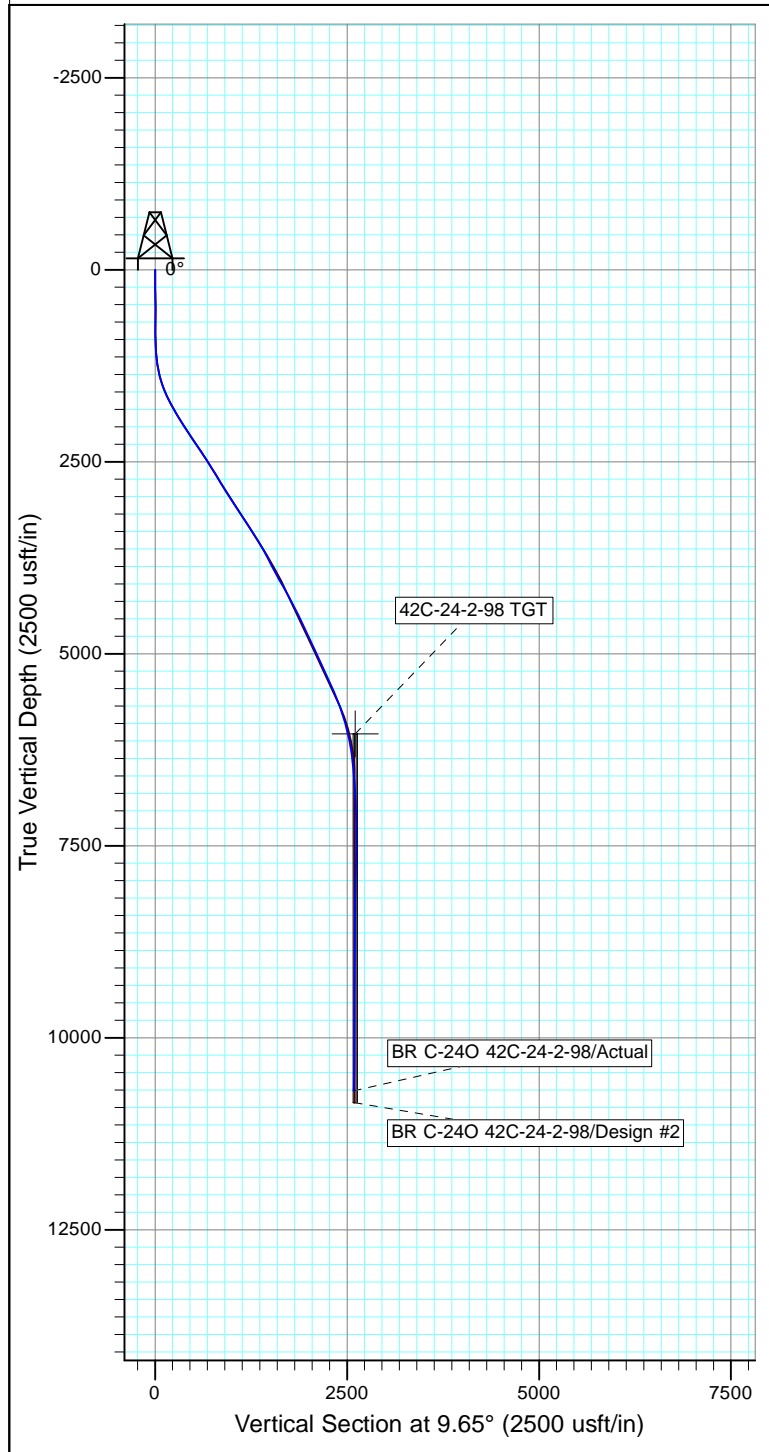
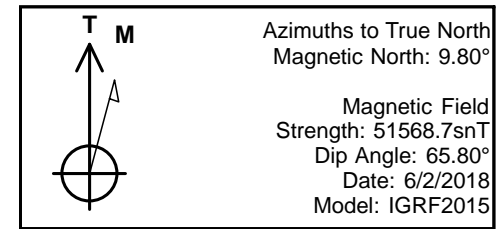
Design Annotations				
Measured Depth (usft)	Vertical Depth (usft)	Local Coordinates		Comment
		+N/-S (usft)	+E/-W (usft)	
11,283.0	10,642.4	2,555.7	407.2	Last PZD Survey
11,333.0	10,692.3	2,555.2	404.3	Straightline Projection to TD

Checked By: \_\_\_\_\_ Approved By: \_\_\_\_\_ Date: \_\_\_\_\_





Project: Rio Blanco County, Colorado  
 Site: BR C-24O  
 Well: BR C-24O 42C-24-2-98  
 Wellbore: Wellbore #1  
 Design: Actual



Design: Actual (BR C-24O 42C-24-2-98/Wellbore #1)

Created By: Derek Stephens Date: 7:23, August 07 2018

THIS SURVEY IS CORRECT TO THE BEST OF  
 MY KNOWLEDGE AND IS SUPPORTED  
 BY ACTUAL FIELD DATA