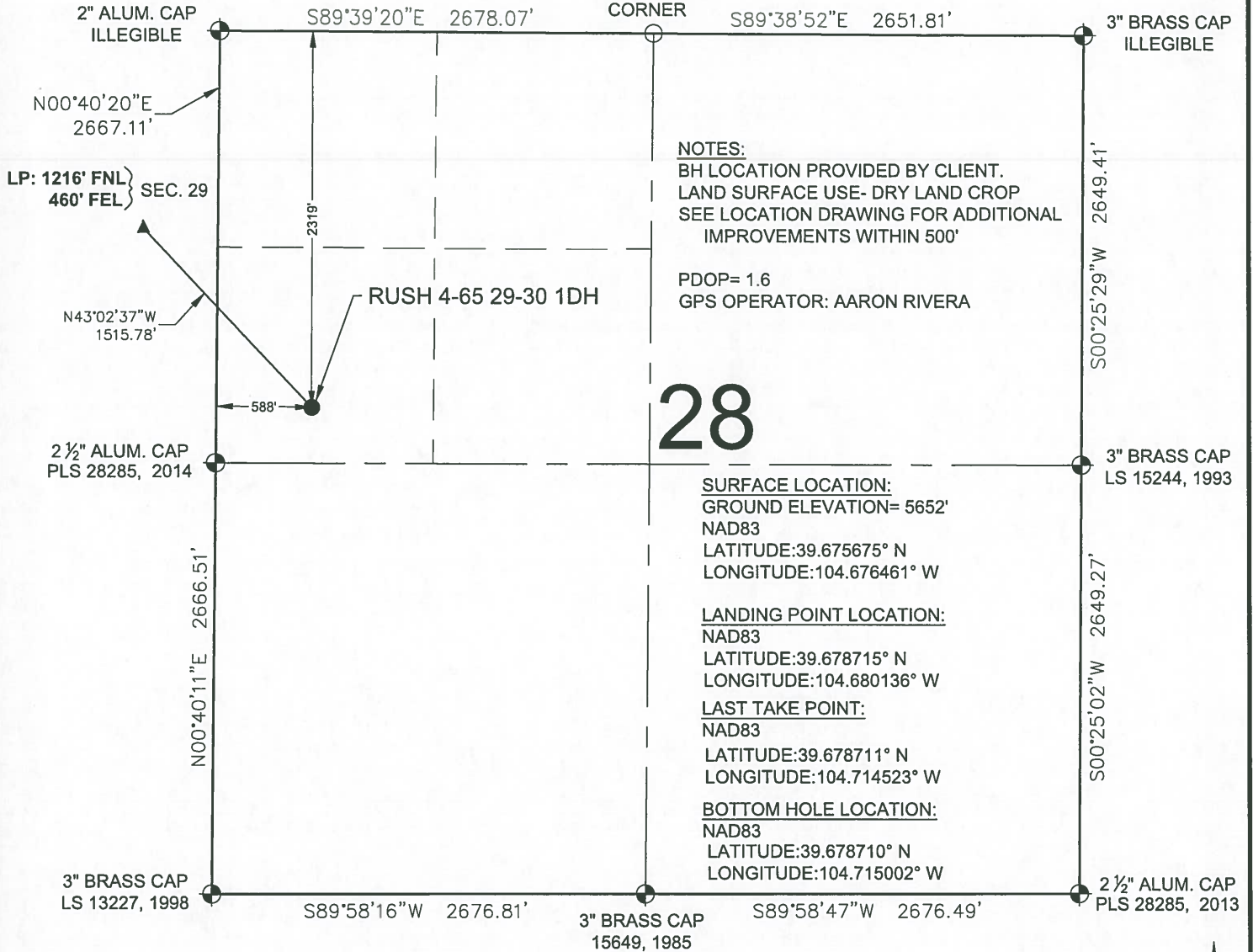


RUSH 4-65 29-30 1DH WELL LOCATION EXHIBIT

CALCULATED
CORNER



NOTES:
 BH LOCATION PROVIDED BY CLIENT.
 LAND SURFACE USE- DRY LAND CROP
 SEE LOCATION DRAWING FOR ADDITIONAL IMPROVEMENTS WITHIN 500'

PDOP= 1.6
 GPS OPERATOR: AARON RIVERA

SURFACE LOCATION:
 GROUND ELEVATION= 5652'
 NAD83
 LATITUDE:39.675675° N
 LONGITUDE:104.676461° W

LANDING POINT LOCATION:
 NAD83
 LATITUDE:39.678715° N
 LONGITUDE:104.680136° W

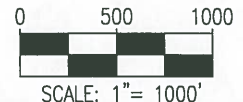
LAST TAKE POINT:
 NAD83
 LATITUDE:39.678711° N
 LONGITUDE:104.714523° W

BOTTOM HOLE LOCATION:
 NAD83
 LATITUDE:39.678710° N
 LONGITUDE:104.715002° W

LEGEND

- = EXISTING MONUMENT
- = CALCULATED POSITION
- = PROPOSED WELL
- ◆ = EXISTING WELL
- = BOTTOM HOLE
- ▲ = LANDING POINT
- = LAST TAKE POINT
- LTP = LAST TAKE POINT
- BHL = BOTTOM HOLE LOCATION
- LP = LANDING POINT

WELL RUSH 4-65 29-30 1DH TO BE LOCATED 2319' FNL & 588' FWL



- NOTES:**
- THIS FIELD SURVEY CONFORMS TO THE MINIMUM STANDARDS SET BY THE C.O.G.C.C., RULE NO. 215
 - ALL DISTANCES AND BEARINGS SHOWN HEREON ARE GROUND VALUES AS GPS MEASURED IN THE FIELD, WITH TIES TO WELLS MEASURED PERPENDICULAR TO LINES SHOWN HEREON. THIS LOW DISTORTION PROJECTION (LDP) IS BASED ON THE NORTH AMERICAN DATUM OF 1983, U.S. SURVEY FOOT WITH A LATITUDE ORIGIN OF 39.696714°N, A CENTRAL MERIDIAN LONGITUDE OF 104.659538°W, AND A SCALE FACTOR ON THE CENTRAL MERIDIAN OF 1.000269 (EXACT). THE LDP BASIS OF BEARINGS IS GEODETIC NORTH.
 - FIELD VERIFICATION OF MONUMENTS COMPLETED WITHIN 1 YEAR OF SIGNATURE DATE, UNLESS OTHERWISE NOTED.

NOTICE: ACCORDING TO COLORADO LAW YOU MUST COMMENCE ANY LEGAL ACTION BASED UPON ANY DEFECT IN THIS SURVEY WITHIN THREE YEARS AFTER YOU FIRST DISCOVER SUCH DEFECT. IN NO EVENT MAY ANY ACTION BASED UPON ANY DEFECT IN THIS SURVEY BE COMMENCED MORE THAN TEN YEARS FROM THIS SAID DATE OF THIS CERTIFICATION SHOWN HEREON.

I, JERRY R. JOHNSON, A LICENSED PROFESSIONAL LAND SURVEYOR IN THE STATE OF COLORADO, DO HEREBY STATE TO **CONOCO PHILLIPS** THAT THE WELL LOCATION EXHIBIT SHOWN HEREON WAS PREPARED BY ME OR UNDER MY DIRECT SUPERVISION AND THE DRAWING SHOWN HEREON ACCURATELY DEPICTS THE PROPOSED LOCATION OF THE WELL. THIS EXHIBIT MEETS THE REQUIREMENTS OF A GIS LAND POSITION AS DEFINED BY SECTION 38-51-102 (7.5) C.R.S. AND AS SUCH PER SECTION 38-51-109.3 C.R.S. CANNOT BE RELIED UPON TO DETERMINE OWNERSHIP.

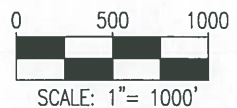
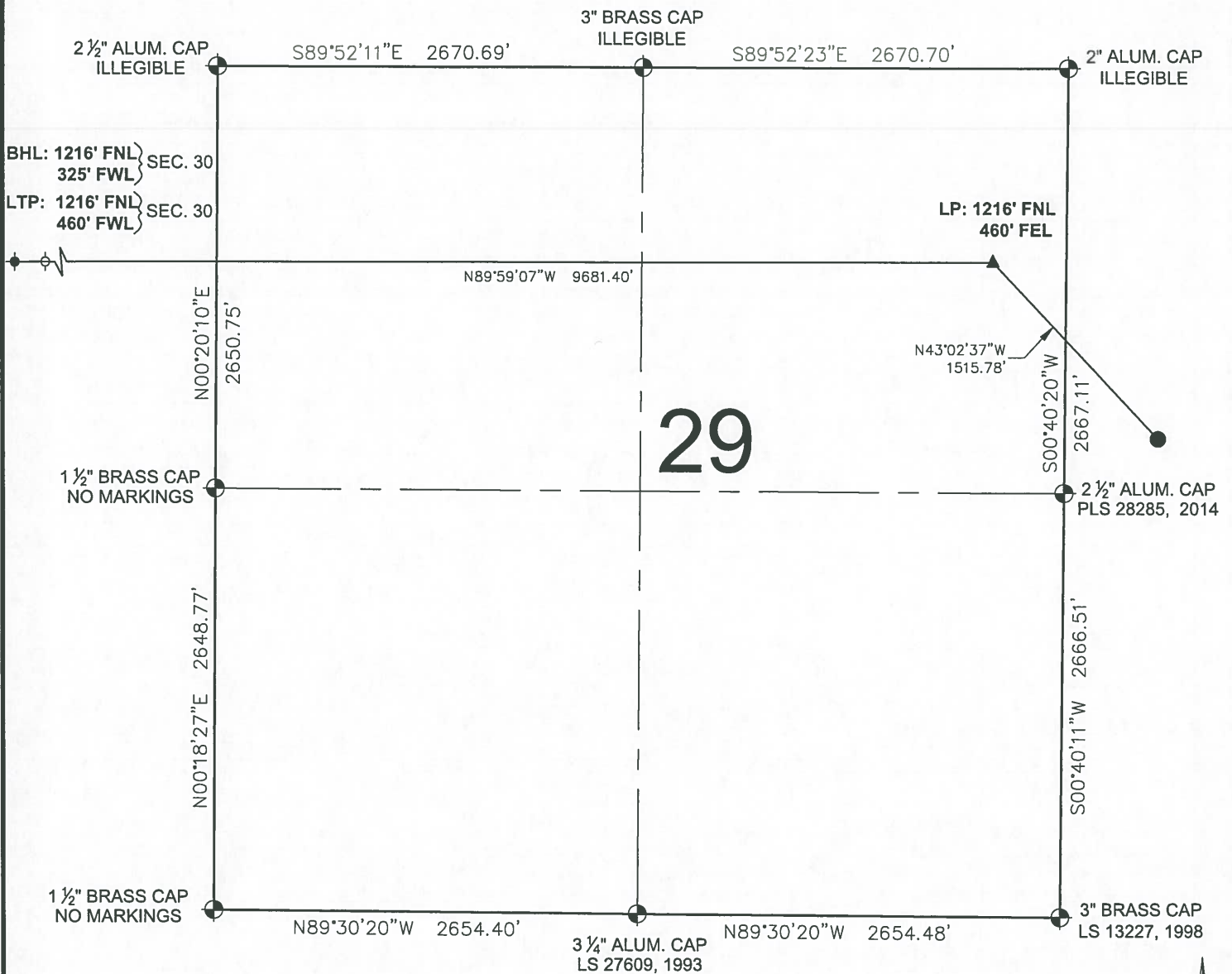


JERRY R. JOHNSON, PLS 29417
 COLORADO LICENSED PROFESSIONAL LAND SURVEYOR
 FOR AND ON BEHALF OF P.F.S., LLC
 d.b.a. ASCENT GEOMATICS SOLUTIONS

SHEET 1 OF 3

 7535 Hilltop Circle Denver, CO 80221 (303) 928-7128 www.ascentgeomatics.com	FIELD DATE: 04-30-18	WELL NAME: RUSH 4-65 29-30 1DH	PREPARED FOR:
	DRAWING DATE: 08-29-18	SURFACE LOCATION: SW 1/4 NW 1/4 SEC. 28, T4S, R65W, 6TH P.M. ARAPAHOE COUNTY, COLORADO	
BY: JW	CHECKED: SJH		

RUSH 4-65 29-30 1DH WELL LOCATION EXHIBIT





LEGEND

- ⊕ = EXISTING MONUMENT
- = CALCULATED POSITION
- = PROPOSED WELL
- ◆ = EXISTING WELL
- ⊕ = BOTTOM HOLE
- ▲ = LANDING POINT
- ⊖ = LAST TAKE POINT
- LTP = LAST TAKE POINT
- BHL = BOTTOM HOLE LOCATION
- LP = LANDING POINT

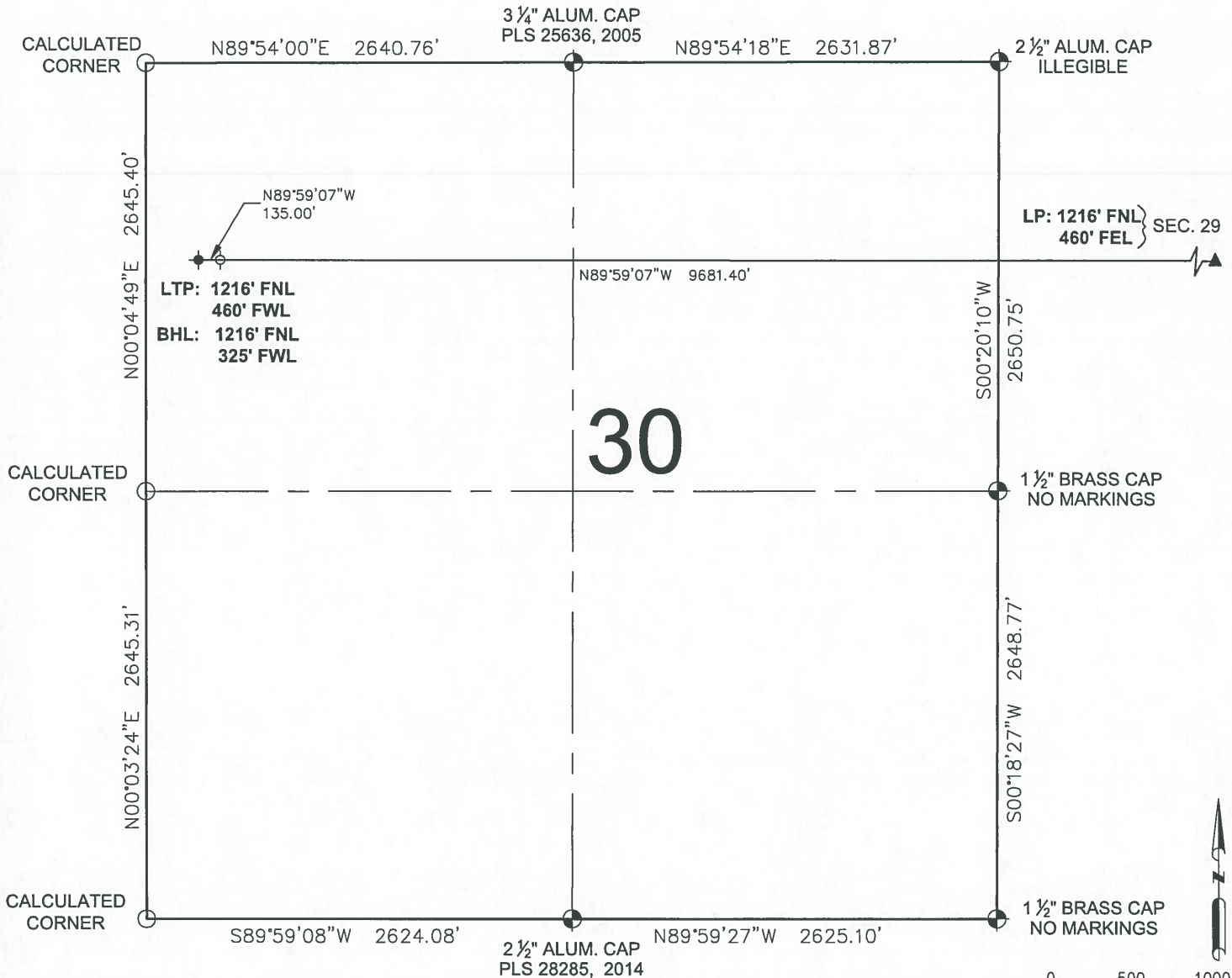
JERRY R. JOHNSON, PLS 29417
 COLORADO LICENSED PROFESSIONAL LAND SURVEYOR
 FOR AND ON BEHALF OF P.F.S., LLC
 d.b.a. ASCENT GEOMATICS SOLUTIONS

SHEET 2 OF 3

 <p>7535 Hilltop Circle Denver, CO 80221 (303) 928-7128 www.ascentgeomatics.com</p>	FIELD DATE: 04-30-18	WELL NAME: RUSH 4-65 29-30 1DH	PREPARED FOR: 
	DRAWING DATE: 08-29-18	SURFACE LOCATION: SW 1/4 NW 1/4 SEC. 28, T4S, R65W, 6TH P.M. ARAPAHOE COUNTY, COLORADO	
BY: JW	CHECKED: SJH		

RUSH 4-65 29-30 1DH WELL LOCATION EXHIBIT

3 1/4" ALUM. CAP
PLS 25636, 2005

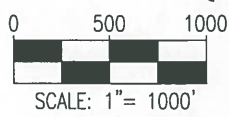


SEC. 29
LP: 1216' FNL }
460' FEL }

LTP: 1216' FNL
460' FWL
BHL: 1216' FNL
325' FWL

1 1/2" BRASS CAP
NO MARKINGS

1 1/2" BRASS CAP
NO MARKINGS





LEGEND

- ⊙ = EXISTING MONUMENT
- = CALCULATED POSITION
- = PROPOSED WELL
- ◆ = EXISTING WELL
- ⬮ = BOTTOM HOLE
- ▲ = LANDING POINT
- ⊕ = LAST TAKE POINT
- LTP = LAST TAKE POINT
- BHL = BOTTOM HOLE LOCATION
- LP = LANDING POINT

JERRY R. JOHNSON, PLS 29417
COLORADO LICENSED PROFESSIONAL LAND SURVEYOR
FOR AND ON BEHALF OF P.F.S., LLC
d.b.a. ASCENT GEOMATICS SOLUTIONS



SHEET 3 OF 3

 7535 Hilltop Circle Denver, CO 80221 (303) 928-7128 www.ascentgeomatics.com	FIELD DATE: 04-30-18	WELL NAME: RUSH 4-65 29-30 1DH	PREPARED FOR: 
	DRAWING DATE: 08-29-18	SURFACE LOCATION: SW 1/4 NW 1/4 SEC. 28, T4S, R65W, 6TH P.M. ARAPAHOE COUNTY, COLORADO	
BY: JW	CHECKED: SJH		