

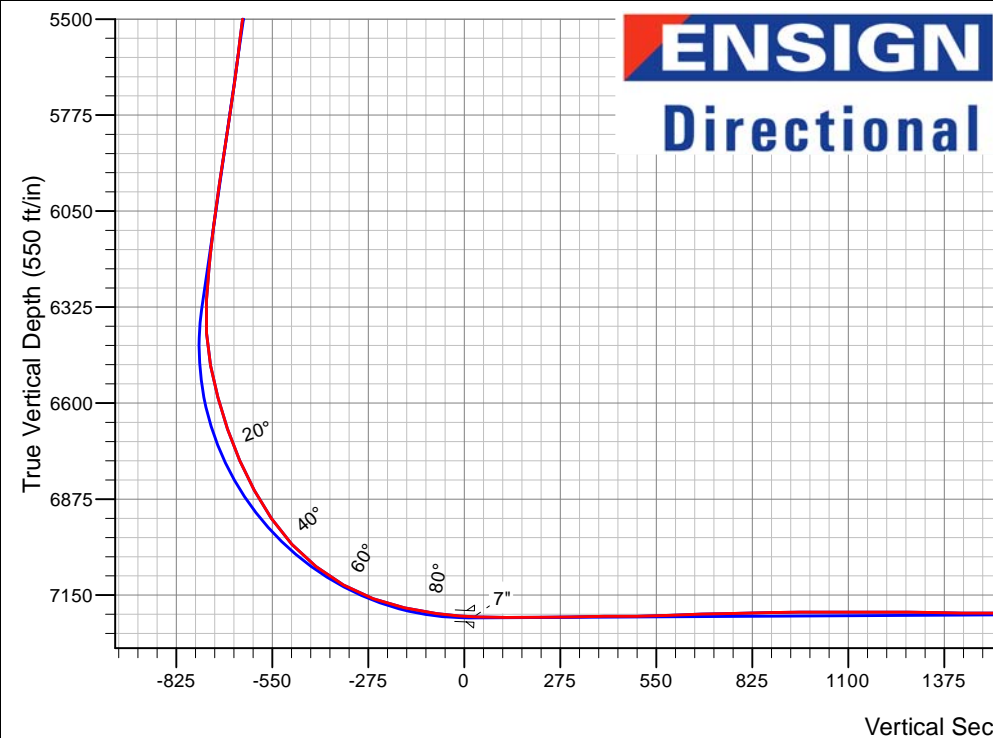
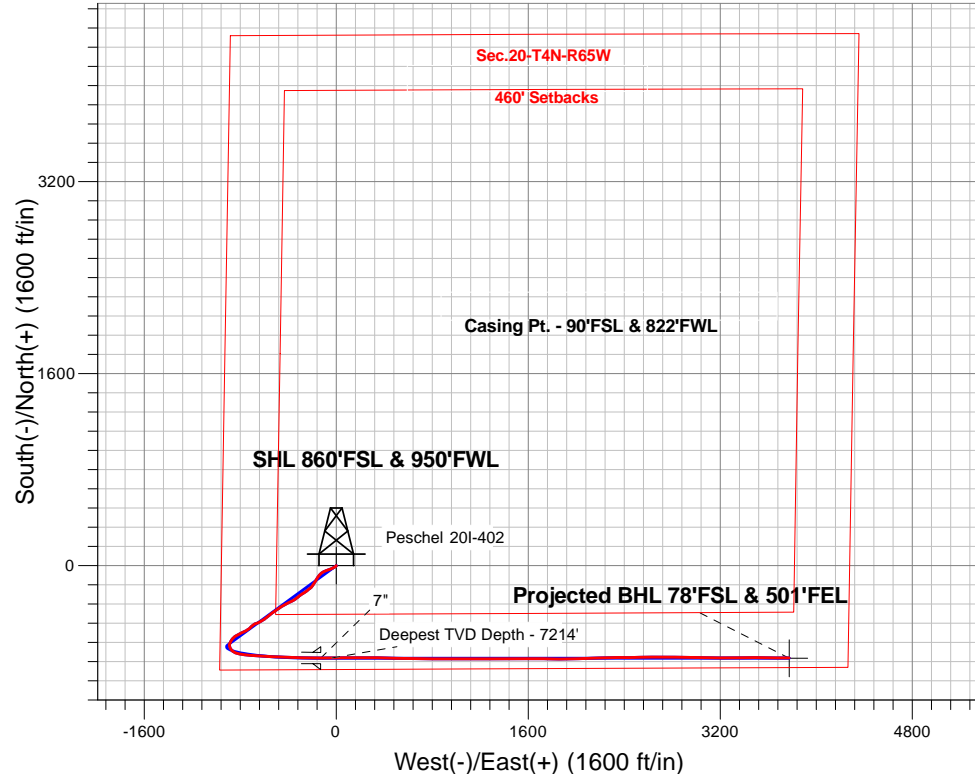
# PETROLEUM DEVELOPMENT CORP Weld County CO

Well Name: **Peschel 20I-402**

Surface Location: Peschel 4N65W20B Pad Sec.20-T4N-R65W  
 North American Datum 1983 , US State Plane 1983, Colorado Northern Zone  
 Ground Elevation: 4802.0  
 +N/-S+E/-W Northing Easting Latitude Longitude Slot  
 0.0 0.0 350604.93 225067.65 40.293000 -104.693150  
 Ensign Rig #134 RKB - 13' WELL @ 4815.0ft (Ensign Rig #134 RKB - 13')

## FINAL SURVEY

**Projected Bottom Hole Location**  
**11669'MD 7176'TVD 769'S & 3774'E of SHL**  
**92.4 degree Incl @ 90.5 degree AZM**



**ENSIGN**  
 Directional

Peschel 4N65W20B Pad Sec.20-T4N-R65W  
 Peschel 20I-402  
 Wellbore #1  
 12:35, September 22 2015

### ANNOTATIONS

TVD	MD	Annotation
7213.9	7860.0	Deepest TVD Depth - 7214'

### LEGEND

- △ Peschel 20I-402, Wellbore #1, Plan #2 (9-12-15)R V0
- Wellbore #1
- Survey #1



# **PETROLEUM DEVELOPMENT CORP Weld County CO**

**SEC.20-T4N-R65W**

**Peschel 4N65W20B Pad Sec.20-T4N-R65W**

**Peschel 20I-402**

**Wellbore #1**

**Survey: Survey #1**

## **Standard Survey Report**

**22 September, 2015**

<b>Company:</b>	PETROLEUM DEVELOPMENT CORP Weld County CO	<b>Local Co-ordinate Reference:</b>	Well Peschel 20I-402
<b>Project:</b>	SEC.20-T4N-R65W	<b>TVD Reference:</b>	WELL @ 4815.0ft (Ensign Rig #134 RKB - 13')
<b>Site:</b>	Peschel 4N65W20B Pad Sec.20-T4N-R65W	<b>MD Reference:</b>	WELL @ 4815.0ft (Ensign Rig #134 RKB - 13')
<b>Well:</b>	Peschel 20I-402	<b>North Reference:</b>	True
<b>Wellbore:</b>	Wellbore #1	<b>Survey Calculation Method:</b>	Minimum Curvature
<b>Design:</b>	Wellbore #1	<b>Database:</b>	US_EDM

<b>Project</b>	SEC.20-T4N-R65W, Weld, Colorado		
<b>Map System:</b>	US State Plane 1983	<b>System Datum:</b>	Mean Sea Level
<b>Geo Datum:</b>	North American Datum 1983		Using Well Reference Point
<b>Map Zone:</b>	Colorado Northern Zone		Using geodetic scale factor

Site	Peschel 4N65W20B Pad Sec.20-T4N-R65W				
Site Position:		Northing:	1,350,841.81 usft	Latitude:	40.293650
From:	Lat/Long	Easting:	3,225,068.28 usft	Longitude:	-104.693140
Position Uncertainty:	0.0 ft	Slot Radius:	13-3/16 "	Grid Convergence:	0.52 °

Well	Peschel 20I-402					
Well Position	+N/-S	0.0 ft	Northing:	1,350,604.99 usft	Latitude:	40.293000
	+E/-W	0.0 ft	Easting:	3,225,067.65 usft	Longitude:	-104.693150
Position Uncertainty		0.0 ft	Wellhead Elevation:	ft	Ground Level:	4,802.0 ft

<b>Wellbore</b>	Wellbore #1				
<b>Magnetics</b>	<b>Model Name</b>	<b>Sample Date</b>	<b>Declination (°)</b>	<b>Dip Angle (°)</b>	<b>Field Strength (nT)</b>
	IGRF2010	9/12/2015	8.24	66.83	52,636

<b>Design</b>	Wellbore #1				
<b>Audit Notes:</b>					
<b>Version:</b>	1.0	<b>Phase:</b>	ACTUAL	<b>Tie On Depth:</b>	0.0
<b>Vertical Section:</b>	<b>Depth From (TVD) (ft)</b>	<b>+N/-S (ft)</b>	<b>+E/-W (ft)</b>	<b>Direction (°)</b>	
	0.0	0.0	0.0	101.56	

<b>Survey Program</b>	<b>Date</b>	9/22/2015			
<b>From (ft)</b>	<b>To (ft)</b>	<b>Survey (Wellbore)</b>	<b>Tool Name</b>	<b>Description</b>	
75.0	11,669.0	Survey #1 (Wellbore #1)	MWD	MWD - Standard	

<b>Survey</b>										
<b>Measured Depth (ft)</b>	<b>Inclination (°)</b>	<b>Azimuth (°)</b>	<b>Vertical Depth (ft)</b>	<b>+N/-S (ft)</b>	<b>+E/-W (ft)</b>	<b>Vertical Section (ft)</b>	<b>Dogleg Rate (°/100usft)</b>	<b>Build Rate (°/100usft)</b>	<b>Turn Rate (°/100usft)</b>	
0.0	0.00	0.00	0.0	0.0	0.0	0.0	0.00	0.00	0.00	
1.0	0.01	152.00	1.0	0.0	0.0	0.0	0.53	0.53	0.00	
<b>SHL 860'FSL &amp; 950'FWL</b>										
6.4	0.03	152.00	6.4	0.0	0.0	0.0	0.53	0.53	0.00	
<b>50'N/S Hardline (20I-402)</b>										
75.0	0.40	152.00	75.0	-0.2	0.1	0.2	0.53	0.53	0.00	
168.0	0.40	148.50	168.0	-0.8	0.4	0.6	0.03	0.00	-3.76	
260.0	0.40	153.10	260.0	-1.4	0.8	1.0	0.03	0.00	5.00	
352.0	0.30	194.40	352.0	-1.9	0.8	1.2	0.29	-0.11	44.89	
445.0	0.20	163.50	445.0	-2.3	0.8	1.3	0.18	-0.11	-33.23	

<b>Company:</b>	PETROLEUM DEVELOPMENT CORP Weld County CO	<b>Local Co-ordinate Reference:</b>	Well Peschel 20I-402
<b>Project:</b>	SEC.20-T4N-R65W	<b>TVD Reference:</b>	WELL @ 4815.0ft (Ensign Rig #134 RKB - 13')
<b>Site:</b>	Peschel 4N65W20B Pad Sec.20-T4N-R65W	<b>MD Reference:</b>	WELL @ 4815.0ft (Ensign Rig #134 RKB - 13')
<b>Well:</b>	Peschel 20I-402	<b>North Reference:</b>	True
<b>Wellbore:</b>	Wellbore #1	<b>Survey Calculation Method:</b>	Minimum Curvature
<b>Design:</b>	Wellbore #1	<b>Database:</b>	US_EDM

Survey									
Measured Depth (ft)	Inclination (°)	Azimuth (°)	Vertical Depth (ft)	+N/-S (ft)	+E/-W (ft)	Vertical Section (ft)	Dogleg Rate (°/100usft)	Build Rate (°/100usft)	Turn Rate (°/100usft)
537.0	1.70	234.30	537.0	-3.2	-0.2	0.4	1.79	1.63	76.96
629.0	3.30	235.20	628.9	-5.5	-3.5	-2.3	1.74	1.74	0.98
721.0	5.00	236.60	720.6	-9.2	-9.0	-7.0	1.85	1.85	1.52
813.0	6.20	241.00	812.2	-13.9	-16.7	-13.6	1.38	1.30	4.78
906.0	6.90	242.60	904.6	-18.9	-26.1	-21.8	0.78	0.75	1.72
1,015.0	7.70	244.10	1,012.7	-25.1	-38.5	-32.7	0.75	0.73	1.38
1,107.0	9.10	250.30	1,103.7	-30.2	-50.9	-43.8	1.81	1.52	6.74
1,200.0	10.40	251.20	1,195.4	-35.4	-65.7	-57.3	1.41	1.40	0.97
1,292.0	11.80	251.70	1,285.7	-41.0	-82.5	-72.6	1.53	1.52	0.54
1,384.0	12.30	244.00	1,375.6	-48.3	-100.3	-88.6	1.83	0.54	-8.37
1,477.0	13.70	234.30	1,466.3	-59.0	-118.1	-103.9	2.78	1.51	-10.43
1,569.0	14.20	223.00	1,555.6	-73.7	-134.7	-117.2	3.01	0.54	-12.28
1,662.0	12.50	214.10	1,646.1	-90.3	-148.1	-127.0	2.86	-1.83	-9.57
1,754.0	14.50	213.90	1,735.5	-108.1	-160.1	-135.2	2.17	2.17	-0.22
1,847.0	13.10	209.50	1,825.8	-127.0	-171.8	-142.8	1.88	-1.51	-4.73
1,942.0	11.90	216.20	1,918.6	-144.3	-182.9	-150.2	1.98	-1.26	7.05
2,037.0	10.60	210.70	2,011.8	-159.7	-193.1	-157.2	1.77	-1.37	-5.79
2,133.0	9.90	218.30	2,106.2	-173.7	-202.7	-163.8	1.58	-0.73	7.92
2,228.0	9.30	230.60	2,199.9	-185.0	-213.7	-172.3	2.24	-0.63	12.95
2,323.0	10.30	233.10	2,293.5	-195.0	-226.4	-182.8	1.14	1.05	2.63
2,418.0	9.10	229.20	2,387.2	-205.0	-238.9	-193.0	1.44	-1.26	-4.11
2,514.0	10.10	235.00	2,481.8	-214.8	-251.6	-203.4	1.45	1.04	6.04
2,609.0	10.60	238.00	2,575.3	-224.2	-265.8	-215.5	0.77	0.53	3.16
2,704.0	11.30	236.40	2,668.5	-234.0	-281.0	-228.4	0.80	0.74	-1.68
2,800.0	11.10	233.80	2,762.7	-244.7	-296.3	-241.2	0.57	-0.21	-2.71
2,895.0	10.90	231.80	2,856.0	-255.6	-310.7	-253.2	0.45	-0.21	-2.11
2,990.0	11.40	236.40	2,949.2	-266.4	-325.6	-265.6	1.07	0.53	4.84
3,085.0	10.80	232.50	3,042.4	-277.0	-340.5	-278.1	1.01	-0.63	-4.11
3,180.0	10.30	235.30	3,135.8	-287.2	-354.5	-289.8	0.75	-0.53	2.95
3,276.0	10.70	243.80	3,230.2	-296.0	-369.6	-302.7	1.66	0.42	8.85
3,371.0	10.50	246.20	3,323.6	-303.4	-385.4	-316.8	0.51	-0.21	2.53
3,466.0	12.60	245.00	3,416.6	-311.3	-402.7	-332.2	2.22	2.21	-1.26
3,561.0	11.90	238.30	3,509.5	-320.8	-420.4	-347.6	1.67	-0.74	-7.05
3,657.0	11.10	240.10	3,603.6	-330.6	-436.9	-361.7	0.91	-0.83	1.88
3,752.0	12.80	240.80	3,696.5	-340.3	-454.0	-376.6	1.80	1.79	0.74
3,847.0	14.40	237.30	3,788.8	-351.9	-473.1	-393.0	1.89	1.68	-3.68
3,942.0	14.90	236.20	3,880.7	-365.0	-493.2	-410.0	0.60	0.53	-1.16
4,037.0	14.60	234.10	3,972.6	-378.8	-513.0	-426.7	0.65	-0.32	-2.21
4,133.0	13.30	231.00	4,065.8	-392.9	-531.4	-441.9	1.56	-1.35	-3.23
4,228.0	10.40	232.50	4,158.7	-405.0	-546.7	-454.5	3.07	-3.05	1.58
4,323.0	11.60	231.70	4,252.0	-416.1	-561.0	-466.3	1.27	1.26	-0.84
4,418.0	12.00	232.50	4,345.0	-428.1	-576.4	-478.9	0.45	0.42	0.84

<b>Company:</b>	PETROLEUM DEVELOPMENT CORP Weld County CO	<b>Local Co-ordinate Reference:</b>	Well Peschel 20I-402
<b>Project:</b>	SEC.20-T4N-R65W	<b>TVD Reference:</b>	WELL @ 4815.0ft (Ensign Rig #134 RKB - 13')
<b>Site:</b>	Peschel 4N65W20B Pad Sec.20-T4N-R65W	<b>MD Reference:</b>	WELL @ 4815.0ft (Ensign Rig #134 RKB - 13')
<b>Well:</b>	Peschel 20I-402	<b>North Reference:</b>	True
<b>Wellbore:</b>	Wellbore #1	<b>Survey Calculation Method:</b>	Minimum Curvature
<b>Design:</b>	Wellbore #1	<b>Database:</b>	US_EDM

Survey									
Measured Depth (ft)	Inclination (°)	Azimuth (°)	Vertical Depth (ft)	+N/-S (ft)	+E/-W (ft)	Vertical Section (ft)	Dogleg Rate (°/100usft)	Build Rate (°/100usft)	Turn Rate (°/100usft)
4,513.0	10.90	228.80	4,438.1	-440.0	-590.9	-490.8	1.39	-1.16	-3.89
4,609.0	11.20	236.40	4,532.3	-451.1	-605.5	-502.9	1.55	0.31	7.92
4,704.0	11.50	243.10	4,625.5	-460.5	-621.7	-516.8	1.42	0.32	7.05
4,799.0	9.20	238.30	4,718.9	-468.8	-636.6	-529.7	2.58	-2.42	-5.05
4,894.0	10.40	248.00	4,812.5	-476.0	-651.0	-542.4	2.14	1.26	10.21
4,990.0	11.50	250.60	4,906.8	-482.4	-668.1	-557.8	1.26	1.15	2.71
5,085.0	12.00	238.30	4,999.8	-490.8	-685.4	-573.2	2.68	0.53	-12.95
5,180.0	12.90	227.80	5,092.6	-503.1	-701.7	-586.6	2.56	0.95	-11.05
5,275.0	10.00	223.60	5,185.7	-516.2	-715.2	-597.3	3.17	-3.05	-4.42
5,371.0	10.30	232.90	5,280.2	-527.4	-727.8	-607.4	1.73	0.31	9.69
5,466.0	10.40	239.90	5,373.6	-536.8	-742.0	-619.4	1.33	0.11	7.37
5,561.0	9.40	241.20	5,467.2	-544.8	-756.2	-631.7	1.08	-1.05	1.37
5,656.0	8.40	242.40	5,561.1	-551.8	-769.2	-643.0	1.07	-1.05	1.26
5,752.0	9.70	241.00	5,655.9	-559.0	-782.4	-654.6	1.37	1.35	-1.46
5,847.0	10.00	246.80	5,749.5	-566.1	-797.0	-667.4	1.09	0.32	6.11
5,942.0	10.80	248.40	5,842.9	-572.6	-812.9	-681.6	0.90	0.84	1.68
6,038.0	10.40	243.60	5,937.3	-579.8	-829.0	-696.0	1.01	-0.42	-5.00
6,133.0	13.90	227.10	6,030.2	-591.4	-845.1	-709.4	5.16	3.68	-17.37
6,228.0	14.10	219.50	6,122.4	-608.1	-860.8	-721.5	1.95	0.21	-8.00
6,324.0	13.60	215.50	6,215.6	-626.3	-874.8	-731.5	1.12	-0.52	-4.17
6,419.0	13.10	204.60	6,308.0	-645.2	-885.7	-738.5	2.70	-0.53	-11.47
6,514.0	15.50	178.00	6,400.2	-667.7	-889.8	-737.9	7.29	2.53	-28.00
6,610.0	15.80	149.70	6,492.7	-691.8	-882.7	-726.2	7.88	0.31	-29.48
6,705.0	17.00	129.50	6,584.0	-711.8	-865.5	-705.3	6.10	1.26	-21.26
6,800.0	18.70	109.70	6,674.5	-725.8	-840.4	-677.9	6.60	1.79	-20.84
6,896.0	23.60	101.10	6,764.0	-734.7	-807.0	-643.4	6.03	5.10	-8.96
6,991.0	28.60	97.70	6,849.3	-741.4	-765.8	-601.7	5.49	5.26	-3.58
7,086.0	34.20	96.30	6,930.3	-747.4	-716.7	-552.4	5.94	5.89	-1.47
7,181.0	43.10	93.00	7,004.5	-752.0	-657.6	-493.6	9.61	9.37	-3.47
7,276.0	52.10	94.20	7,068.5	-756.5	-587.7	-424.2	9.52	9.47	1.26
7,371.0	60.70	91.20	7,121.0	-760.1	-508.7	-346.1	9.43	9.05	-3.16
7,466.0	70.30	92.10	7,160.3	-762.6	-422.4	-261.0	10.14	10.11	0.95
7,561.0	77.60	92.60	7,186.6	-766.4	-331.3	-171.0	7.70	7.68	0.53
7,656.0	82.10	90.50	7,203.3	-768.9	-237.8	-78.9	5.21	4.74	-2.21
7,722.0	86.70	91.20	7,209.8	-769.9	-172.1	-14.4	7.05	6.97	1.06
7,766.0	87.72	90.24	7,211.9	-770.4	-128.2	28.8	3.18	2.32	-2.18
7"									
7,860.0	89.90	88.20	7,213.9	-769.1	-34.2	120.6	3.18	2.32	-2.17
Deepest TVD Depth - 7214'									
7,955.0	90.50	89.60	7,213.5	-767.3	60.7	213.3	1.60	0.63	1.47
8,050.0	91.00	89.60	7,212.3	-766.7	155.7	306.2	0.53	0.53	0.00
8,146.0	90.50	90.90	7,211.0	-767.1	251.7	400.3	1.45	-0.52	1.35
8,240.0	90.10	89.60	7,210.5	-767.5	345.7	492.5	1.45	-0.43	-1.38

<b>Company:</b>	PETROLEUM DEVELOPMENT CORP Weld County CO	<b>Local Co-ordinate Reference:</b>	Well Peschel 20I-402
<b>Project:</b>	SEC.20-T4N-R65W	<b>TVD Reference:</b>	WELL @ 4815.0ft (Ensign Rig #134 RKB - 13')
<b>Site:</b>	Peschel 4N65W20B Pad Sec.20-T4N-R65W	<b>MD Reference:</b>	WELL @ 4815.0ft (Ensign Rig #134 RKB - 13')
<b>Well:</b>	Peschel 20I-402	<b>North Reference:</b>	True
<b>Wellbore:</b>	Wellbore #1	<b>Survey Calculation Method:</b>	Minimum Curvature
<b>Design:</b>	Wellbore #1	<b>Database:</b>	US_EDM

Survey									
Measured Depth (ft)	Inclination (°)	Azimuth (°)	Vertical Depth (ft)	+N/-S (ft)	+E/-W (ft)	Vertical Section (ft)	Dogleg Rate (°/100usft)	Build Rate (°/100usft)	Turn Rate (°/100usft)
8,336.0	93.10	91.90	7,207.9	-768.7	441.6	586.7	3.94	3.13	2.40
8,431.0	91.30	92.60	7,204.2	-772.5	536.5	680.4	2.03	-1.89	0.74
8,526.0	91.00	90.70	7,202.3	-775.2	631.4	774.0	2.02	-0.32	-2.00
8,621.0	91.40	91.00	7,200.3	-776.6	726.4	867.3	0.53	0.42	0.32
8,716.0	90.60	90.00	7,198.7	-777.4	821.4	960.5	1.35	-0.84	-1.05
8,811.0	89.60	90.30	7,198.5	-777.7	916.4	1,053.6	1.10	-1.05	0.32
8,907.0	90.20	89.60	7,198.7	-777.6	1,012.4	1,147.7	0.96	0.63	-0.73
9,002.0	90.00	90.70	7,198.5	-777.8	1,107.4	1,240.8	1.18	-0.21	1.16
9,097.0	88.60	89.10	7,199.7	-777.7	1,202.4	1,333.8	2.24	-1.47	-1.68
9,192.0	89.30	89.10	7,201.4	-776.2	1,297.3	1,426.6	0.74	0.74	0.00
9,287.0	90.80	89.50	7,201.3	-775.0	1,392.3	1,519.4	1.63	1.58	0.42
9,382.0	92.00	89.60	7,199.0	-774.3	1,487.3	1,612.3	1.27	1.26	0.11
9,478.0	91.00	90.70	7,196.5	-774.5	1,583.3	1,706.4	1.55	-1.04	1.15
9,573.0	90.10	90.30	7,195.6	-775.4	1,678.3	1,799.6	1.04	-0.95	-0.42
9,668.0	89.80	91.70	7,195.6	-777.0	1,773.2	1,893.0	1.51	-0.32	1.47
9,763.0	88.70	90.30	7,196.9	-778.7	1,868.2	1,986.4	1.87	-1.16	-1.47
9,858.0	87.80	88.20	7,199.8	-777.4	1,963.1	2,079.1	2.40	-0.95	-2.21
9,953.0	90.40	87.20	7,201.3	-773.6	2,058.1	2,171.3	2.93	2.74	-1.05
10,048.0	90.00	88.40	7,201.0	-770.0	2,153.0	2,263.6	1.33	-0.42	1.26
10,144.0	91.30	88.90	7,199.9	-767.7	2,248.9	2,357.2	1.45	1.35	0.52
10,239.0	91.70	89.30	7,197.4	-766.2	2,343.9	2,449.9	0.60	0.42	0.42
10,334.0	90.60	89.30	7,195.5	-765.1	2,438.9	2,542.7	1.16	-1.16	0.00
10,429.0	90.30	88.70	7,194.7	-763.4	2,533.9	2,635.4	0.71	-0.32	-0.63
10,524.0	90.90	90.00	7,193.7	-762.3	2,628.8	2,728.3	1.51	0.63	1.37
10,619.0	89.50	90.70	7,193.4	-762.9	2,723.8	2,821.5	1.65	-1.47	0.74
10,714.0	90.50	90.30	7,193.4	-763.7	2,818.8	2,914.7	1.13	1.05	-0.42
10,810.0	90.30	90.90	7,192.7	-764.7	2,914.8	3,008.9	0.66	-0.21	0.63
10,905.0	90.20	90.70	7,192.3	-766.1	3,009.8	3,102.3	0.24	-0.11	-0.21
11,000.0	90.70	90.90	7,191.6	-767.4	3,104.8	3,195.6	0.57	0.53	0.21
11,095.0	91.20	90.30	7,190.0	-768.4	3,199.8	3,288.9	0.82	0.53	-0.63
11,190.0	90.40	89.30	7,188.7	-768.1	3,294.8	3,381.8	1.35	-0.84	-1.05
11,285.0	91.20	89.10	7,187.3	-766.7	3,389.7	3,474.6	0.87	0.84	-0.21
11,381.0	91.50	90.20	7,185.1	-766.1	3,485.7	3,568.5	1.19	0.31	1.15
11,476.0	90.80	90.70	7,183.2	-766.9	3,580.7	3,661.7	0.91	-0.74	0.53
11,570.0	92.70	90.90	7,180.3	-768.2	3,674.6	3,754.0	2.03	2.02	0.21
11,611.0	92.40	90.50	7,178.5	-768.7	3,715.6	3,794.3	1.22	-0.73	-0.98
11,669.0	92.40	90.50	7,176.0	-769.2	3,773.5	3,851.1	0.00	0.00	0.00
BHL 75°FSL & 500°FEL									

<b>Company:</b>	PETROLEUM DEVELOPMENT CORP Weld County CO	<b>Local Co-ordinate Reference:</b>	Well Peschel 20I-402
<b>Project:</b>	SEC.20-T4N-R65W	<b>TVD Reference:</b>	WELL @ 4815.0ft (Ensign Rig #134 RKB - 13')
<b>Site:</b>	Peschel 4N65W20B Pad Sec.20-T4N-R65W	<b>MD Reference:</b>	WELL @ 4815.0ft (Ensign Rig #134 RKB - 13')
<b>Well:</b>	Peschel 20I-402	<b>North Reference:</b>	True
<b>Wellbore:</b>	Wellbore #1	<b>Survey Calculation Method:</b>	Minimum Curvature
<b>Design:</b>	Wellbore #1	<b>Database:</b>	US_EDM

Design Targets									
Target Name	Dip Angle (°)	Dip Dir. (°)	TVD (ft)	+N/-S (ft)	+E/-W (ft)	Northing (usft)	Easting (usft)	Latitude	Longitude
SHL 860'FSL & 950'FWL - hit/miss target - Shape - survey hits target center - Point	0.00	0.00	1.0	0.0	0.0	1,350,605.01	3,225,067.65	40.293000	-104.693150
BHL 75'FSL & 500'FEL - survey misses target center by 18.2ft at 11669.0ft MD (7176.0 TVD, -769.2 N, 3773.5 E) - Point	0.00	0.00	7,194.0	-772.0	3,774.5	1,349,867.38	3,228,848.83	40.290880	-104.679620

Casing Points				
Measured Depth (ft)	Vertical Depth (ft)	Name	Casing Diameter (")	Hole Diameter (")
7,766.0	7,211.9	7"	7	7-1/2

Survey Annotations				
Measured Depth (ft)	Vertical Depth (ft)	+N/-S (ft)	+E/-W (ft)	Comment
7,860.0	7,213.9	-769.1	-34.2	Deepest TVD Depth - 7214'

Checked By: _____	Approved By: _____	Date: _____
-------------------	--------------------	-------------