

# Inspection Photos

10/12/2018

Operator: PDC ENERGY INC - 69175

Location ID: 322636

Inspection Doc. Number: 682504024

Weld County, CO

Aaron Trujillo  
NE Reclamation Specialist  
COGCC

Inspection Photos  
Operator: PDC ENERGY INC - 69175  
Location ID: 322636



**Photo 1:** Photo taken from the battery location, facing west. Previous inspections documented subsidence concerns at the battery location and required operator to repair. Photo shows subsidence concerns remain.

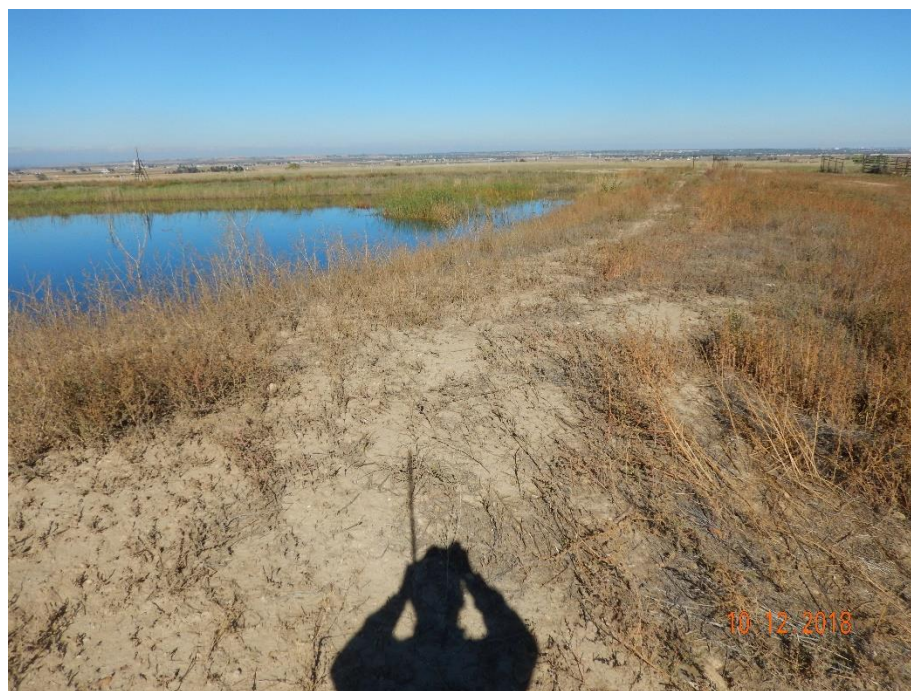


**Photo 2:** Photo taken from the battery location, facing west. Previous inspections documented subsidence concerns at the battery location and required operator to repair. Photo shows subsidence concerns remain and appear to be expanding. 6 foot measuring stick for reference.

Inspection Photos  
Operator: PDC ENERGY INC - 69175  
Location ID: 322636



**Photo 3:** Photo taken from the battery location, facing west. Photo shows inspector irrigation pond. Surface owner has expanded irrigation pond incorporating the western half of the production facility.



**Photo 4:** Photo taken from the battery location, facing north. Photo shows inspector irrigation pond. Surface owner has expanded irrigation pond incorporating the western half of the production facility.

Inspection Photos  
Operator: PDC ENERGY INC - 69175  
Location ID: 322636



**Photo 5:** Photo taken from the battery location, facing northeast. Photo shows former production facility.



**Photo 6:** Photo taken from the battery location, facing east. Photo shows former production facility.

Inspection Photos  
Operator: PDC ENERGY INC - 69175  
Location ID: 322636



**Photo 7:** Photo taken from the battery location, facing northeast. Photo shows former production facility is either bare and exposed soil, or predominantly undesirable weedy plant species such as kochia and Russian thistle.



**Photo 8:** Photo taken from the well location, facing north. Photo shows well remains predominantly bare and exposed soil.

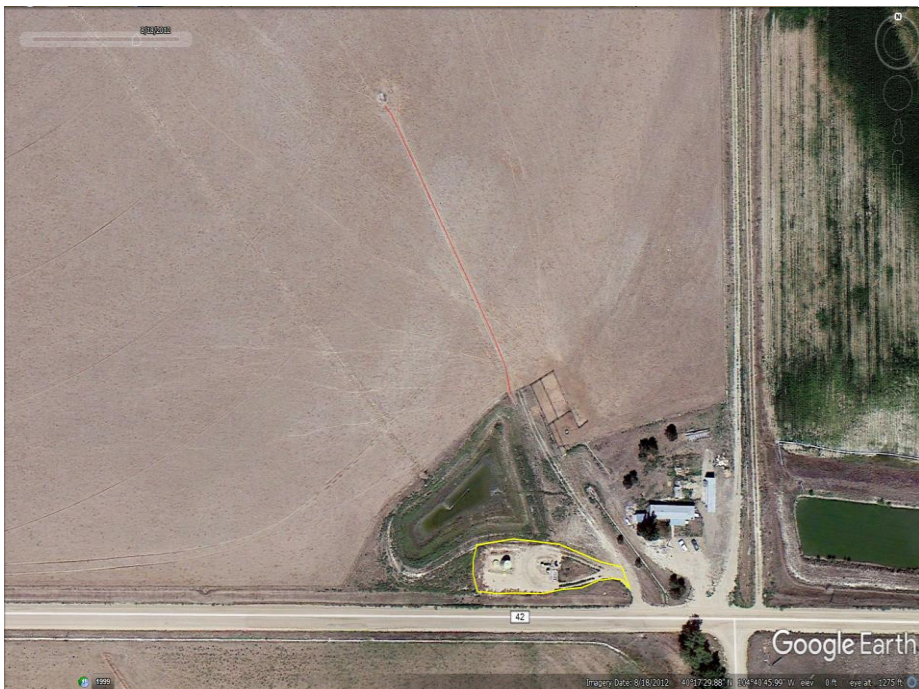


**Photo 9:** Photo taken from the well location, facing south. Photo shows access road.

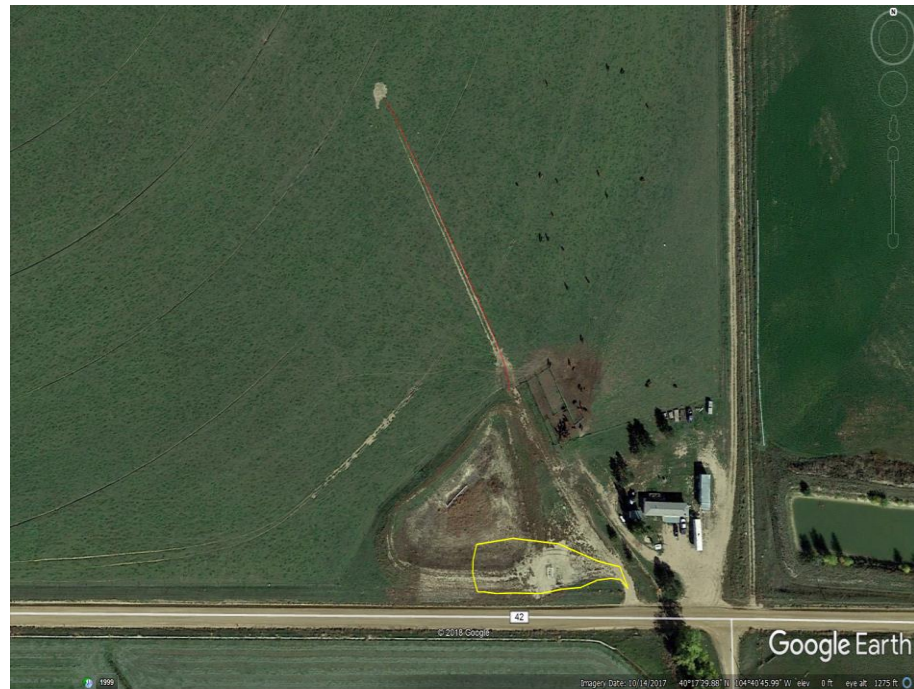


**Photo 10:** Photo taken from the adjacent reference area. Photo shows vegetation in reference area. Reference area is an irrigated perennial grassland crop.

Inspection Photos  
Operator: PDC ENERGY INC - 69175  
Location ID: 322636



**Photo 11:** 2012 aerial imagery. Photo shows aerial of the well location, access road and production facility subject to the SOVR.



**Photo 12:** Most current available aerial imagery (2017). Photo shows surface owner has expanded the irrigation pond to include a portion of the battery facility.