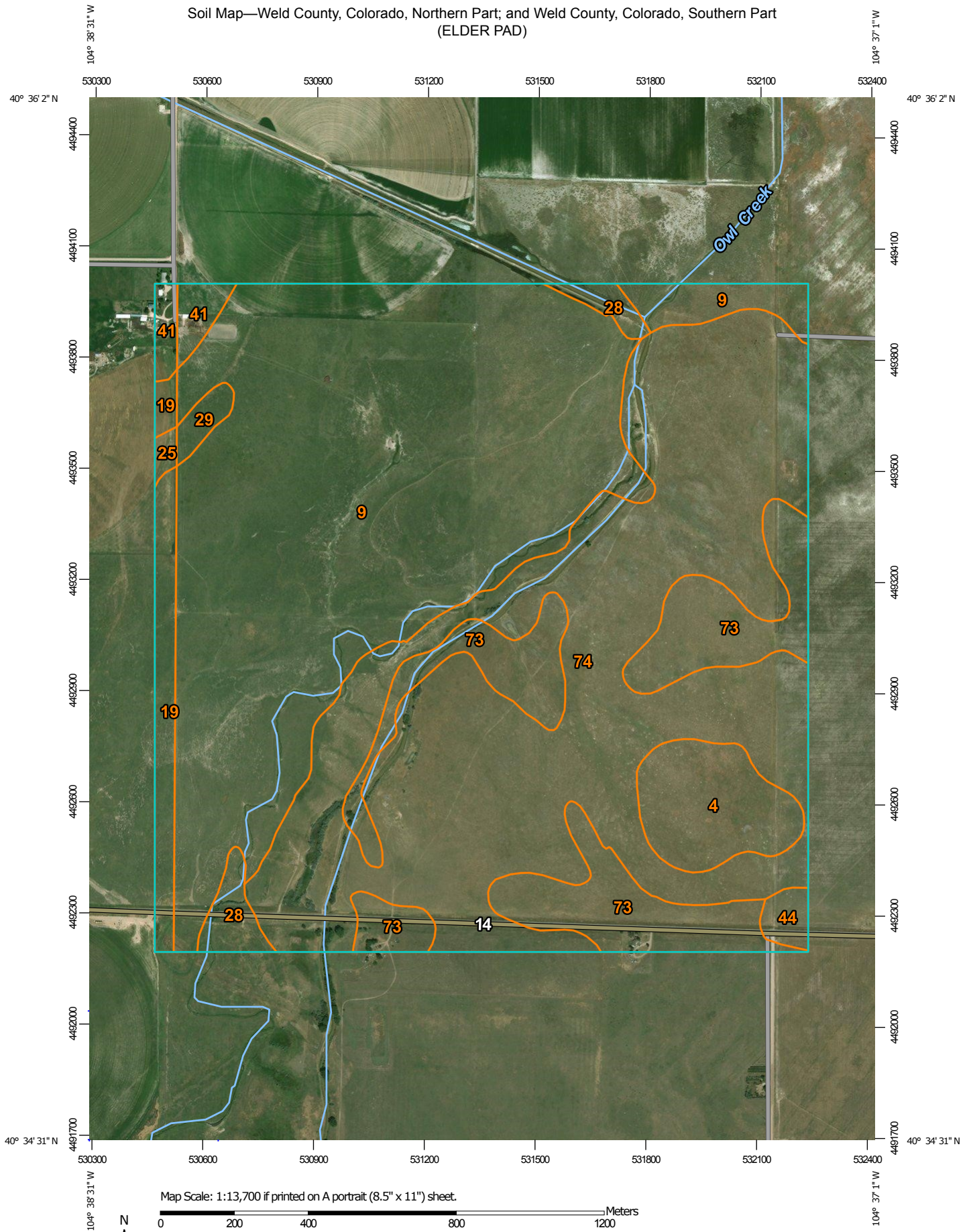


Soil Map—Weld County, Colorado, Northern Part; and Weld County, Colorado, Southern Part
(ELDER PAD)



Map Unit Legend

Map Unit Symbol	Map Unit Name	Acres in AOI	Percent of AOI
4	Ascalon fine sandy loam, 0 to 6 percent slopes	29.5	3.7%
9	Avar fine sandy loam	324.8	41.0%
28	Haplaquolls-Fluvaquents complex, frequently flooded	11.5	1.4%
29	Haverson loam, 0 to 3 percent slopes	4.1	0.5%
41	Nunn clay loam, 0 to 6 percent slopes	5.1	0.6%
44	Olney fine sandy loam, 0 to 6 percent slopes	4.5	0.6%
73	Vona sandy loam, 0 to 3 percent slopes	88.4	11.2%
74	Vona sandy loam, 3 to 9 percent slopes	298.4	37.7%
Subtotals for Soil Survey Area		766.4	96.8%
Totals for Area of Interest		791.7	100.0%

Map Unit Symbol	Map Unit Name	Acres in AOI	Percent of AOI
19	Colombo clay loam, 0 to 1 percent slopes	19.8	2.5%
25	Haverson loam, 0 to 1 percent slopes	1.7	0.2%
41	Nunn clay loam, 0 to 1 percent slopes	3.8	0.5%
Subtotals for Soil Survey Area		25.3	3.2%
Totals for Area of Interest		791.7	100.0%

Weld County, Colorado, Northern Part

9—Avar fine sandy loam

Map Unit Setting

National map unit symbol: 3615

Elevation: 4,500 to 5,500 feet

Mean annual precipitation: 11 to 14 inches

Mean annual air temperature: 46 to 48 degrees F

Frost-free period: 130 to 160 days

Farmland classification: Not prime farmland

Map Unit Composition

Avar and similar soils: 80 percent

Minor components: 20 percent

Estimates are based on observations, descriptions, and transects of the mapunit.

Description of Avar

Setting

Landform: Flood plains, swales, stream terraces

Down-slope shape: Linear

Across-slope shape: Linear

Parent material: Calcareous loamy alluvium

Typical profile

H1 - 0 to 3 inches: fine sandy loam

H2 - 3 to 8 inches: clay loam

H3 - 8 to 60 inches: sandy clay loam

Properties and qualities

Slope: 0 to 3 percent

Depth to restrictive feature: More than 80 inches

Natural drainage class: Well drained

Runoff class: Low

Capacity of the most limiting layer to transmit water (Ksat):

Moderately low to moderately high (0.06 to 0.60 in/hr)

Depth to water table: More than 80 inches

Frequency of flooding: None

Frequency of ponding: None

Calcium carbonate, maximum in profile: 15 percent

Salinity, maximum in profile: Slightly saline to strongly saline (4.0 to 32.0 mmhos/cm)

Sodium adsorption ratio, maximum in profile: 250.0

Available water storage in profile: Moderate (about 6.6 inches)

Interpretive groups

Land capability classification (irrigated): None specified

Land capability classification (nonirrigated): 7s

Hydrologic Soil Group: C

Ecological site: Salt Flat (R067XY033CO)

Hydric soil rating: No

Minor Components

Fluvaquentic haplustolls

Percent of map unit: 6 percent

Landform: Terraces

Hydric soil rating: Yes

Ascalon

Percent of map unit: 5 percent

Hydric soil rating: No

Haverson

Percent of map unit: 4 percent

Hydric soil rating: No

Nunn

Percent of map unit: 3 percent

Hydric soil rating: No

Bankard

Percent of map unit: 2 percent

Hydric soil rating: No

Data Source Information

Soil Survey Area: Weld County, Colorado, Northern Part

Survey Area Data: Version 12, Oct 10, 2017

Soil Survey Area: Weld County, Colorado, Southern Part

Survey Area Data: Version 16, Oct 10, 2017

Weld County, Colorado, Southern Part

19—Colombo clay loam, 0 to 1 percent slopes

Map Unit Setting

National map unit symbol: 361v

Elevation: 4,600 to 4,780 feet

Mean annual precipitation: 12 to 16 inches

Mean annual air temperature: 48 to 52 degrees F

Frost-free period: 130 to 160 days

Farmland classification: Prime farmland if irrigated

Map Unit Composition

Colombo and similar soils: 85 percent

Minor components: 15 percent

Estimates are based on observations, descriptions, and transects of the mapunit.

Description of Colombo

Setting

Landform: Flood plains, terraces

Down-slope shape: Linear

Across-slope shape: Linear

Parent material: Stratified, calcareous alluvium

Typical profile

H1 - 0 to 14 inches: clay loam

H2 - 14 to 21 inches: stratified loam to clay loam

H3 - 21 to 60 inches: stratified sand to loam to clay loam

Properties and qualities

Slope: 0 to 1 percent

Depth to restrictive feature: More than 80 inches

Natural drainage class: Well drained

Runoff class: Low

Capacity of the most limiting layer to transmit water (Ksat):

Moderately high (0.20 to 0.60 in/hr)

Depth to water table: More than 80 inches

Frequency of flooding: None

Frequency of ponding: None

Calcium carbonate, maximum in profile: 10 percent

Salinity, maximum in profile: Nonsaline to very slightly saline (0.0 to 2.0 mmhos/cm)

Available water storage in profile: High (about 9.4 inches)

Interpretive groups

Land capability classification (irrigated): 1

Land capability classification (nonirrigated): 3e

Hydrologic Soil Group: C

Ecological site: Clayey Plains (R067BY042CO)

Hydric soil rating: No

Minor Components

Nunn

Percent of map unit: 5 percent

Hydric soil rating: No

Heldt

Percent of map unit: 5 percent

Hydric soil rating: No

Dacono

Percent of map unit: 5 percent

Hydric soil rating: No

Data Source Information

Soil Survey Area: Weld County, Colorado, Northern Part

Survey Area Data: Version 12, Oct 10, 2017

Soil Survey Area: Weld County, Colorado, Southern Part

Survey Area Data: Version 16, Oct 10, 2017