

PARAMETERS REPORT

Final Corrected.

Depth (ft)	Tool Name	Mnemonic	Description	Value	Units
TOP					
	SHARED	BS	Bit Size	4.750	in
	SHARED	UBS	Use Bit Size instead of Caliper for all applications.	No	
	SHARED	MDWT	Borehole Fluid Weight	8.333	ppg
	SHARED	OBM	Oil Based Mud System?	No	
	SHARED	RMUD	Mud Resistivity	2.000	ohmm
	SHARED	TRM	Temperature of Mud	75.0	degF
	SHARED	CSD	Logging Interval is Cased?	No	
	SHARED	ICOD	AHV Casing OD	5.500	in
	SHARED	ST	Surface Temperature	50.0	degF
	SHARED	TD	Total Well Depth	5752.00	ft
	SHARED	BHT	Bottom Hole Temperature	185.0	degF
	GTET	GROK	Process Gamma Ray?	Yes	
	GTET	GRSO	Gamma Tool Standoff	0.000	in
	GTET	GEOK	Process Gamma Ray EVR?	No	
	DSNT	DNOK	Process DSN?	Yes	
	DSNT	DEOK	Process DSN EVR?	No	
	DSNT	NLIT	Neutron Lithology	Sandstone	
	DSNT	DNSO	DSNTool Standoff	0.000	in
	DSNT	DNTP	Temperature Correction Type	None	
	DSNT	DPRS	DSN Pressure Correction Type	None	
	DSNT	SHCO	View More Correction Options	No	
	DSNT	UTVD	Use TVD for Gradient Corrections?	No	
	DSNT	LHWT	Logging Horizontal Water Tank?	No	
BOTTOM					
Data: SCHWAKE_CRAIG\0003 DSNT\002.02 08-Mar-10 13:15 Up				Date: 08-Mar-10 13:17:33	

HALLIBURTON										DUAL SPA	
MERCHANT ENERGY PARTNERS, LLC SCHWAKE A-1 WEST PEETZ LOGAN CO					COMPANY		MERCHANT ENERGY PARTNERS, LLC				
					WELL		SCHWAKE A-1				
					FIELD		WEST PEETZ				
COMPANY					COUNTY		LOGAN				
					STATE		STA				
Permanent Datum					GL	Sect. 6		Twp. 11	Rge. 52W	Elev. 4547	
Log measured from					KB					above perm. D	
Drilling measured from					KB						
Date					22-Feb-10						
Run No.					THREE						
Depth - Driller					5766.00 ft						
Depth - Logger					5752.0 ft						
Bottom - Logged Interval					5746 ft						
Top - Logged Interval					5100 ft						
Casing - Driller					5,500 in @ 5350.0 ft		@				
Casing - Logger					5350.0 ft						
Bit Size					4.750 in		@				
Type Fluid in Hole					WBM						
Density					8.3 ppg						
PH											
Source of Sample											
Rm @ Meas. Temperature					0.80 ohmm @ 75.00 degF		@				
Rmt @ Meas. Temperature					0.67 ohmm @ 75.00 degF		@				
Rmc @ Meas. Temperature					0.74 ohmm @ 75.00 degF		@				
Source Rmt					CHART						
Rm @ BHT					0.34 ohmm @ 185.0 degF		@				
Time Since Circulation					3.0 hr						
Time on Bottom					22-Feb-10 17:29						
Max. Rec. Temperature					185.0 degF @ 5752.0 ft		@				
Equipment					10549597		BRIGHTON				
Recorded By					C. BLUE						
Witnessed By					JEFF SCHNEIDER						

HALLIBURTON

Plot Time: 08-Mar-10 13:24:06
Plot Range: 5285 ft to 5755.92 ft
Data: SCHWAKE_CRAIG\Well Based\DSNT\
Plot File: \DSNT\MAIN

MAIN PASS 5" = 100'

10K	Tens	0
	pounds	
0	Gamma API	250
	api	

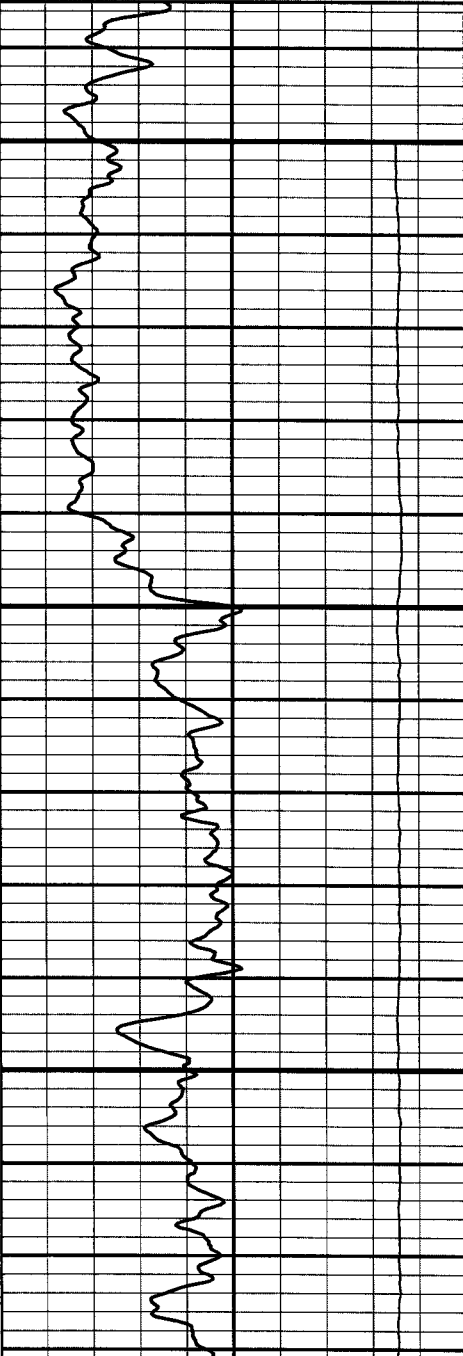
1 : 240

30

Neutron Porosity

-10

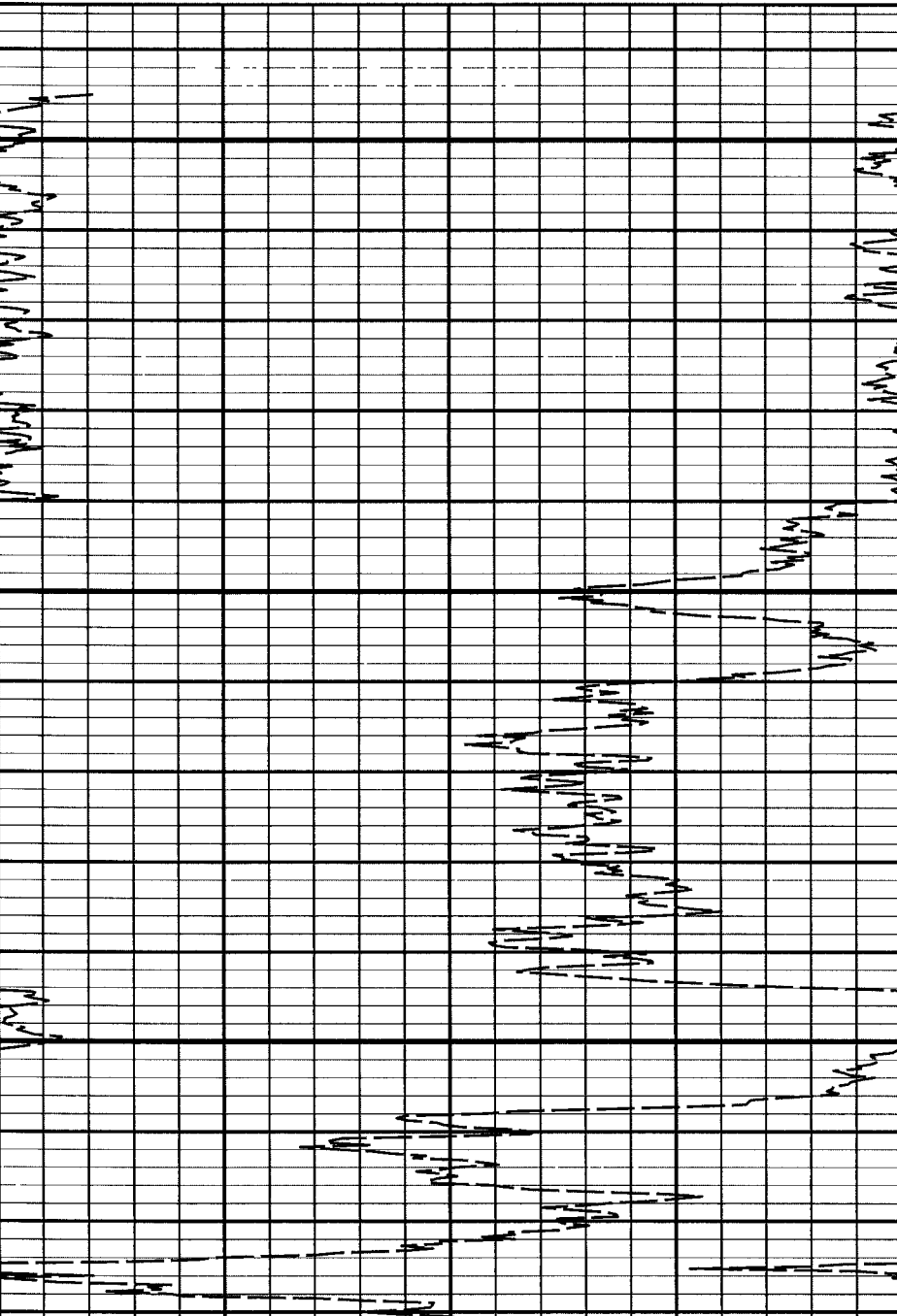
percent

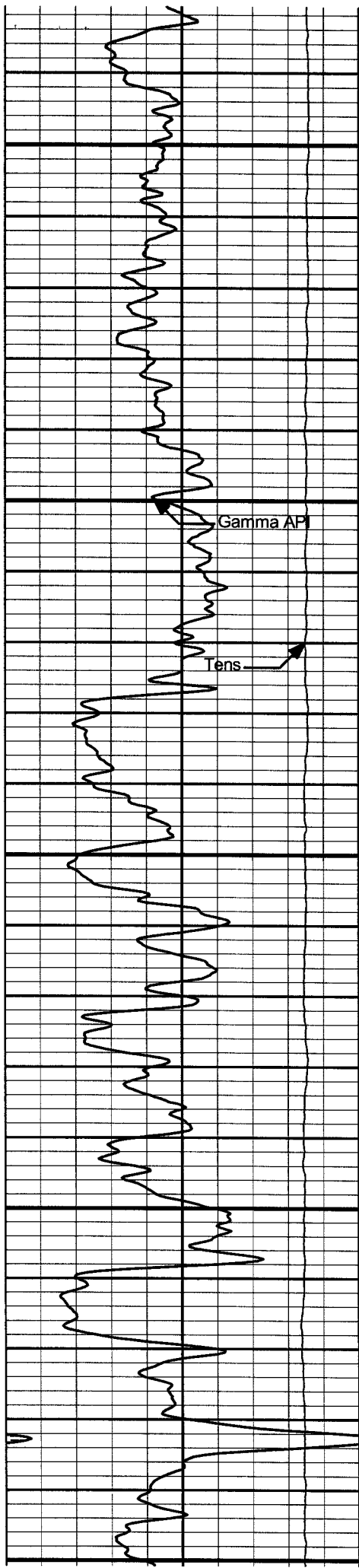


5300

5350

5400





5450

5500

5550

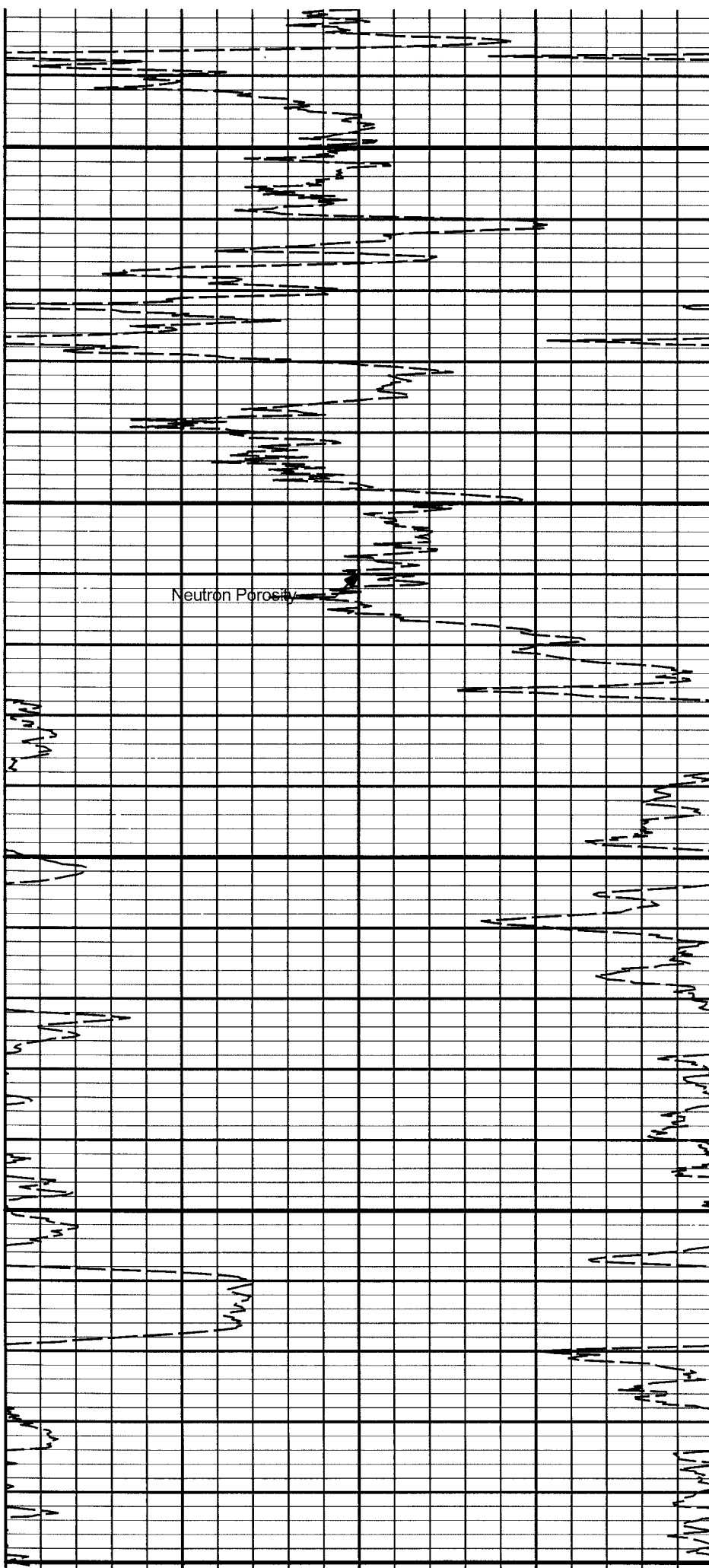
5600

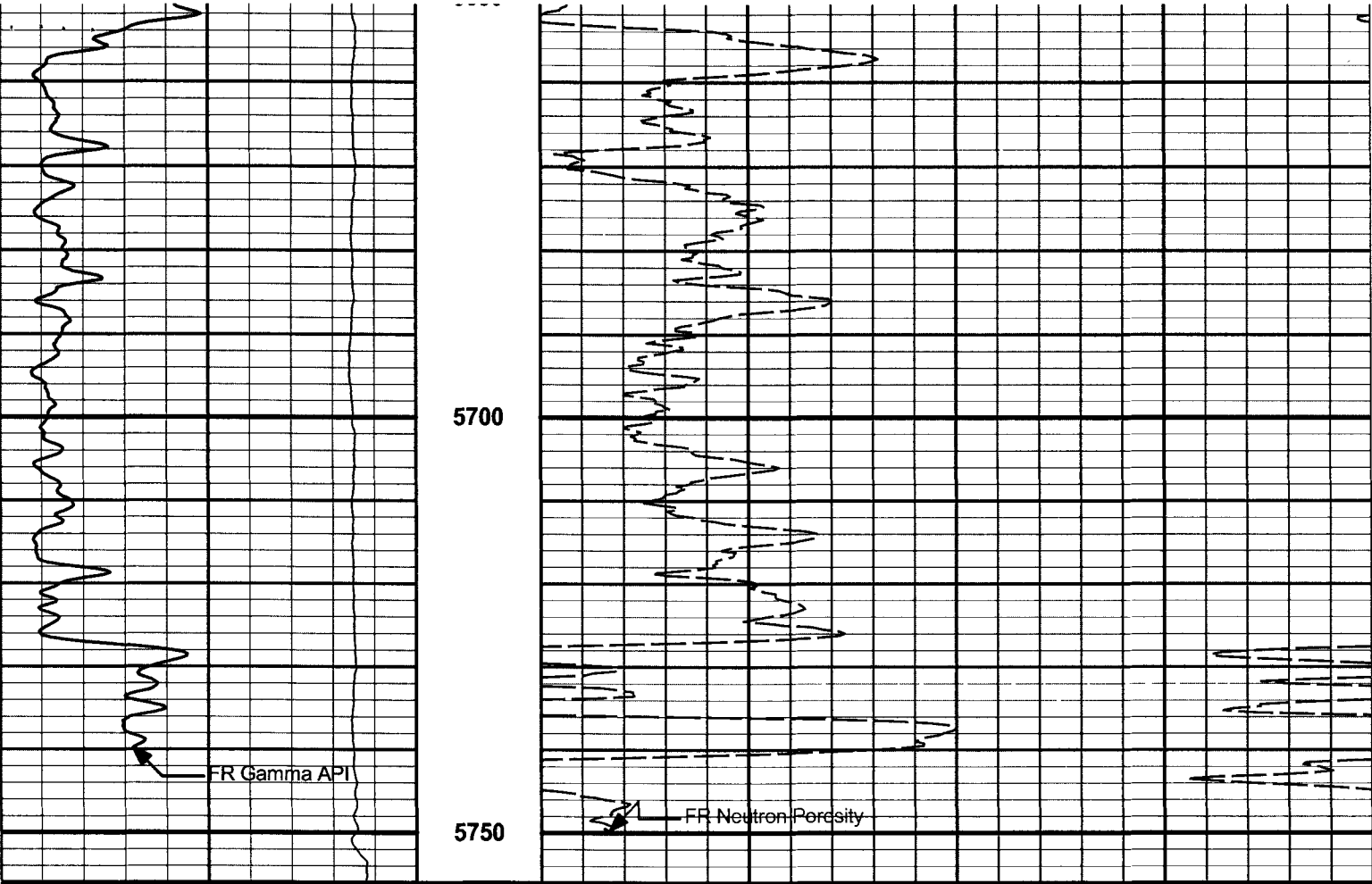
5650

Gamma API

Tens

Neutron Porosity





0	Gamma API	250	1 : 240	30	Neutron Porosity	-10
	api				percent	

10K	Tens	0				
	pounds					


HALLIBURTON

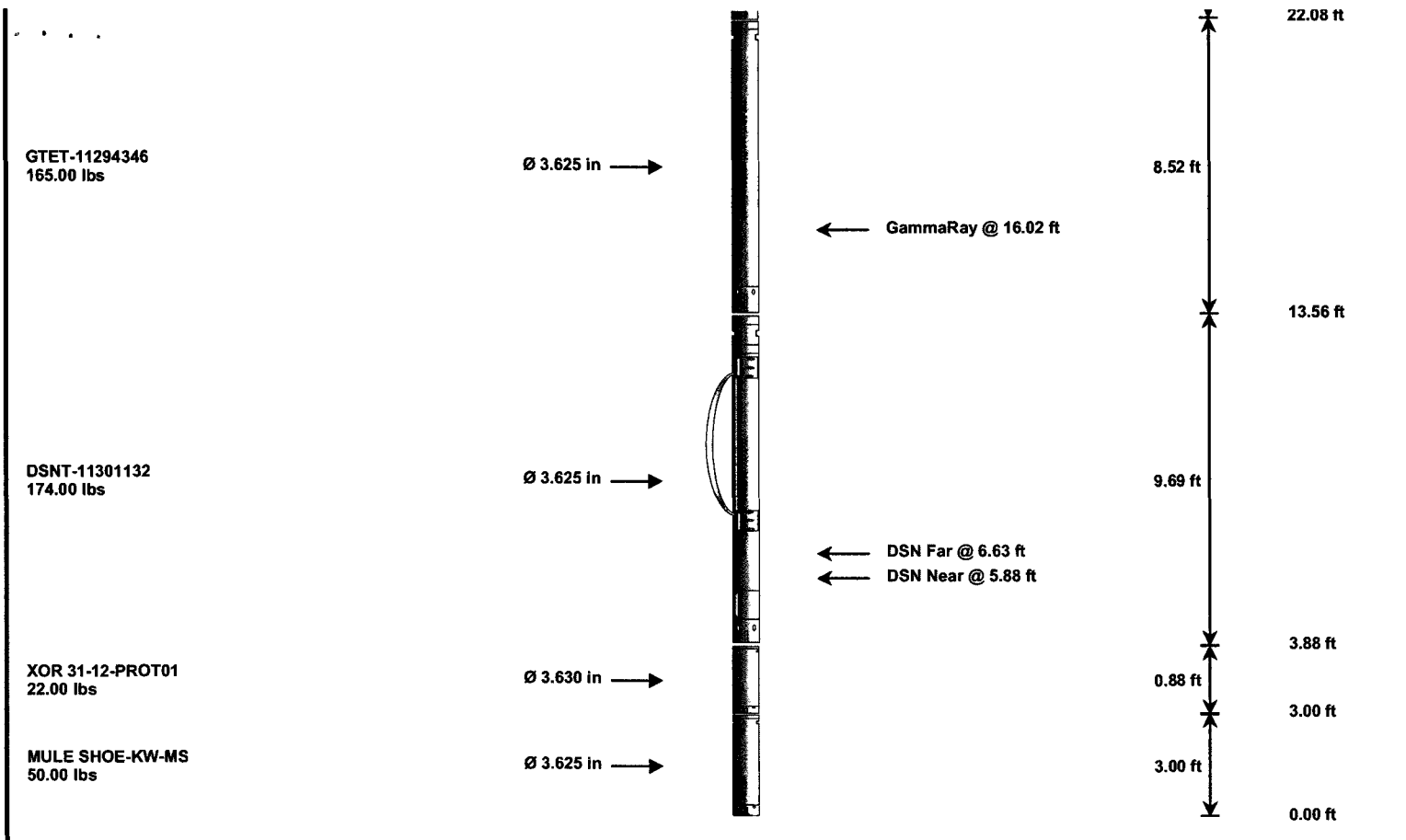
Plot Time: 08-Mar-10 13:24:07
Plot Range: 5285 ft to 5755.92 ft
Data: SCHWAKE_CRAIG\Well Based\DSNT\
Plot File: \DSNT\MAIN

MAIN PASS 5" = 100'

HALLIBURTON

TOOL STRING DIAGRAM REPORT

Description	O.D.	Diagram	Sensors @ Delays	Length	Accumulated Length
RWCH-B097 135.00 lbs	Ø 3.625 in →		← Load Cell @ 24.65 ft ← BH Temperature @ 24.08 ft	6.25 ft	28.33 ft



Mnemonic	Tool Name	Serial Number	Weight (lbs)	Length (ft)	Accumulated Length (ft)	Max.Log. Speed (fpm)
RWCH	Releasable Wireline Cable Head	B097	135.00	6.25	22.08	300.00
GTET	Natural Gamma Ray Tool	11294346	165.00	8.52	13.56	60.00
DSNT	Dual Spaced Neutron	11301132	174.00	9.69	3.88	60.00
DCNT	DSN Decentralizer	11277440	50.00	5.13 *	7.21	300.00
XOR	Crossover DSNT 31 to 12 Pins	PROT01	22.00	0.88	3.00	300.00
MS	MS	KW-MS	50.00	3.00	0.00	100.00
Total			596.00	28.33		
Data: SCHWAKE\0003 DSNT\IDLE			* Not included in Total Length and Length Accumulation.			
			Date: 22-Feb-10 17:24:36			

COMPANY	MERCHANT ENERGY PARTNERS, LLC		
WELL	SCHWAKE A-1		
FIELD	WEST PEETZ		
COUNTY	LOGAN	STATE	CO
HALLIBURTON		DUAL SPACED NEUTRON	