

HALLIBURTON

DUAL SPACED NEUTRON

COMPANY				MERCHANT ENERGY PARTNERS, LLC			
WELL				SCHWAKE A-1			
FIELD				WEST PEETZ			
COUNTY				LOGAN			
STATE				CO			
Permanent Datum				GL			
Log measured from				KB			
Drilling measured from				KB			
Date				12-Nov-09			
Run No.				THREE			
Depth - Driller				5666.00 ft			
Depth - Logger				5653.0 ft			
Bottom - Logged Interval				5649 ft			
Top - Logged Interval				5100 ft			
Casing - Driller				5.500 in @ 5350.0 ft			
Casing - Logger				5350.0 ft			
Bit Size				4.750 in			
Type Fluid in Hole				WBM			
Density				8.3 ppg			
Viscosity							
PH							
Source of Sample				FLOWLINE			
Rm @ Meas. Temperature				0.80 ohmm @ 75.00 degF			
Rmf @ Meas. Temperature				0.67 ohmm @ 75.00 degF			
Rmc @ Meas. Temperature				0.74 ohmm @ 75.00 degF			
Source Rmf				CHART			
Rm @ BHT				0.34 ohmm @ 185.0 degF			
Time Since Circulation				3.0 hr			
Time on Bottom				12-Nov-09 02:11			
Max. Rec. Temperature				185.0 degF @ 5666.0 ft			
Equipment				10549597			
Recorded By				F. LODER			
Witnessed By				JEFF SCHNEIDER			
Location				1650' FNL & 1650' FEL NESWNE			
API No.				0507507167			
Other Services:				BSAT ACRT			
Sect. 6				Twp. 11			
Rge. 52W							
Elev. 4547.0 ft				Elev. K.B. 4549.0 ft			
D.F. 4550.0 ft				D.F. 4550.0 ft			
G.L. 4547.0 ft				G.L. 4547.0 ft			

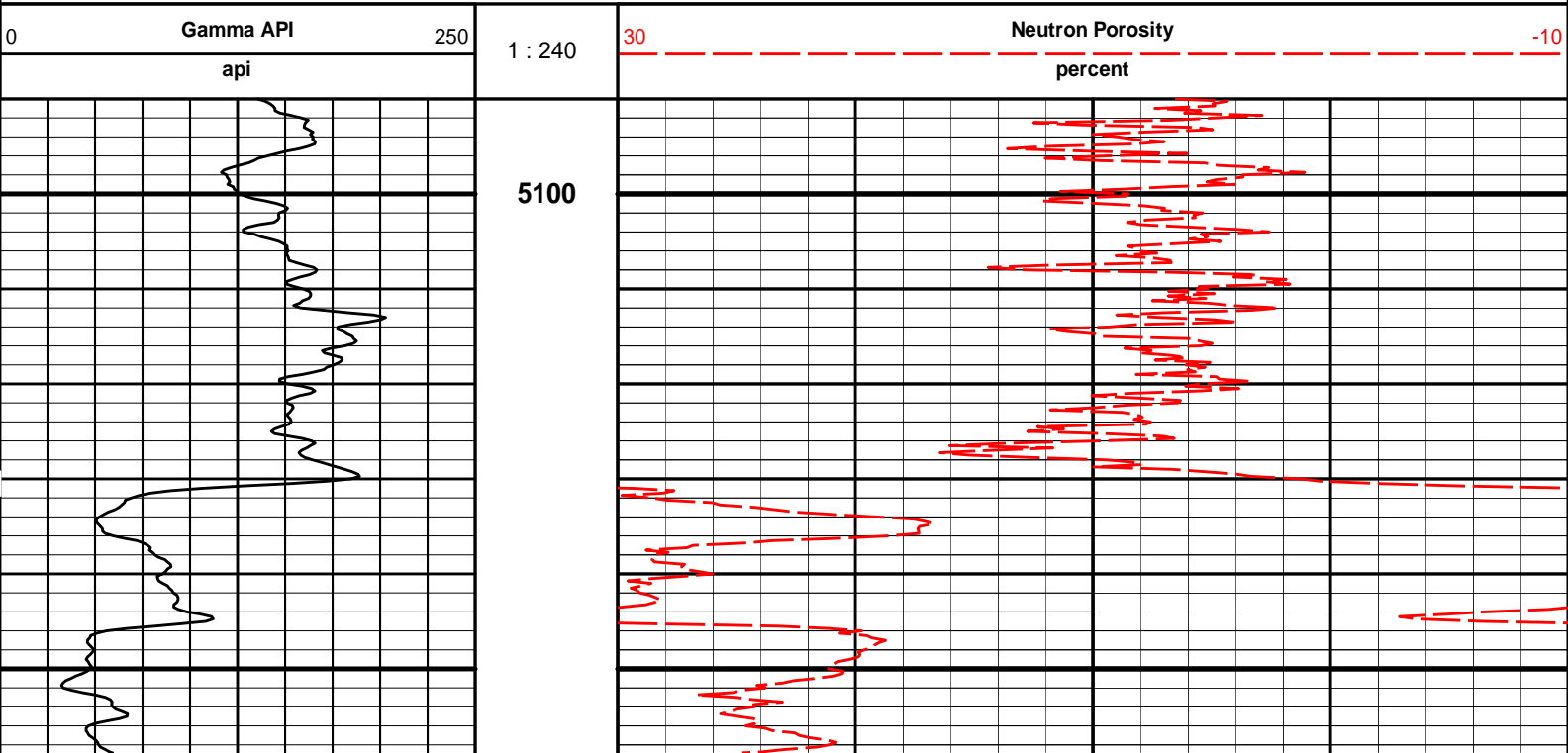
Fold here

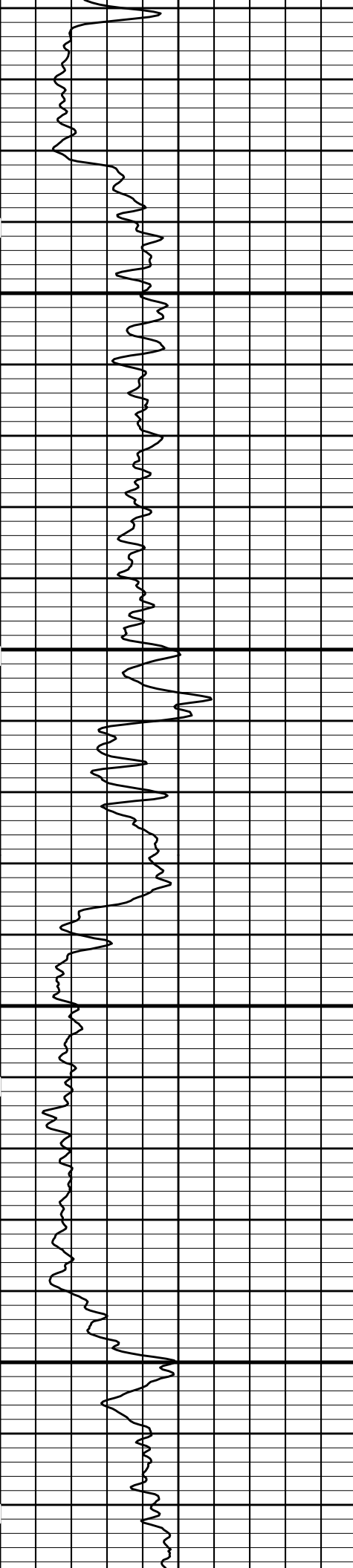
Service Ticket No.: 7002705				API Serial No.: 0507507167				PGM Version: WL INSITE R2.4 (Build 20)											
CHANGE IN MUD TYPE OR ADDITIONAL SAMPLE						RESISTIVITY SCALE CHANGES													
Date	Sample No.					Type Log	Depth	Scale Up Hole	Scale Down Hole										
Depth-Driller																			
Type Fluid in Hole																			
Density	Viscosity																		
Ph	Fluid Loss																		
Source of Sample						RESISTIVITY EQUIPMENT DATA													
Rm @ Meas. Temp	@		@			Run No.	Tool Type & No.	Pad Type	Tool Pos.	Other									
Rmf @ Meas. Temp.	@		@																
Rmc @ Meas. Temp.	@		@																
Source Rmf	Rmc																		
Rm @ BHT	@		@																
Rmf @ BHT	@		@																
Rmc @ BHT	@		@																
EQUIPMENT DATA																			
GAMMA				ACOUSTIC				DENSITY				NEUTRON							
Run No.	THREE			Run No.				Run No.				Run No.	THREE						
Serial No.	11294346			Serial No.				Serial No.				Serial No.	11301132						
Model No.	GTET			Model No.				Model No.				Model No.	DSNT						
Diameter	3.625"			No. of Cent.				Diameter				Diameter	3.625"						
Detector Model No.	102-T			Spacing				Log Type				Log Type	NEU-NEU						
Type	SCINT							Source Type				Source Type	Am241Be						
Length	8"			LSA [Y/N]				Serial No.				Serial No.	DSN-434						
Distance to Source	10'			FWDA [Y/N]				Strength				Strength	15 Ci						
LOGGING DATA																			
GENERAL				GAMMA				ACOUSTIC				DENSITY				NEUTRON			

GENERAL			GAMMA	ACOUSTIC		DENSITY		NEUTRON					
Run	Depth		Speed	Scale		Scale		Matrix	Scale		Matrix		
No.	From	To	ft/min	L	R	L	R		L	R			
THREE	0	250	REC							30	-10	SAND	
DIRECTIONAL INFORMATION													
Maximum Deviation								@	KOP				@
Remarks:													
RUN ONE: RWCH-GTET-ACRT RAN IN COMBINATION													
RUN TWO: RWCH-GTET-BSAT RAN IN COMBINATION													
RUN THREE: RWCH-GTET-DSNT RAN IN COMBINATION													
ANNULAR HOLE VOLUME NOT CALCULATED -- NO CALIPER IN HOLE													
TENSION PULLS AFFECT TOOL RESPONSE													
TIGHT HOLE -- BIT SIZE 4.75 INCH													
NO MUD DATA PROVIDED -- WATER USED													
CREW: A. LEWIS													
THANK YOU FOR CHOSING HALLIBURTON ENERGY SERVICES 303-825-4346													
<p>HALLIBURTON DOES NOT GUARANTEE THE ACCURACY OF ANY INTERPRETATION OF THE LOG DATA, CONVERSION OF LOG DATA TO PHYSICAL ROCK PARAMETERS OR RECOMMENDATIONS WHICH MAY BE GIVEN BY HALLIBURTON PERSONNEL OR WHICH APPEAR ON THE LOG OR IN ANY OTHER FORM. ANY USER OF SUCH DATA, INTERPRETATIONS, CONVERSIONS, OR RECOMMENDATIONS AGREES THAT HALLIBURTON IS NOT RESPONSIBLE EXCEPT WHERE DUE TO GROSS NEGLIGENCE OR WILLFUL MISCONDUCT, FOR ANY LOSS, DAMAGES, OR EXPENSES RESULTING FROM THE USE THEREOF.</p> <p>HALLIBURTON</p>													

HALLIBURTON	Plot Time: 12-Nov-09 02:29:42 Plot Range: 5090 ft to 5655.92 ft Data: {ActiveWell}\Well Based\DAQ Current\ Plot File: \DSNT\IQ_POROSITY_5IN_RM
--------------------	---

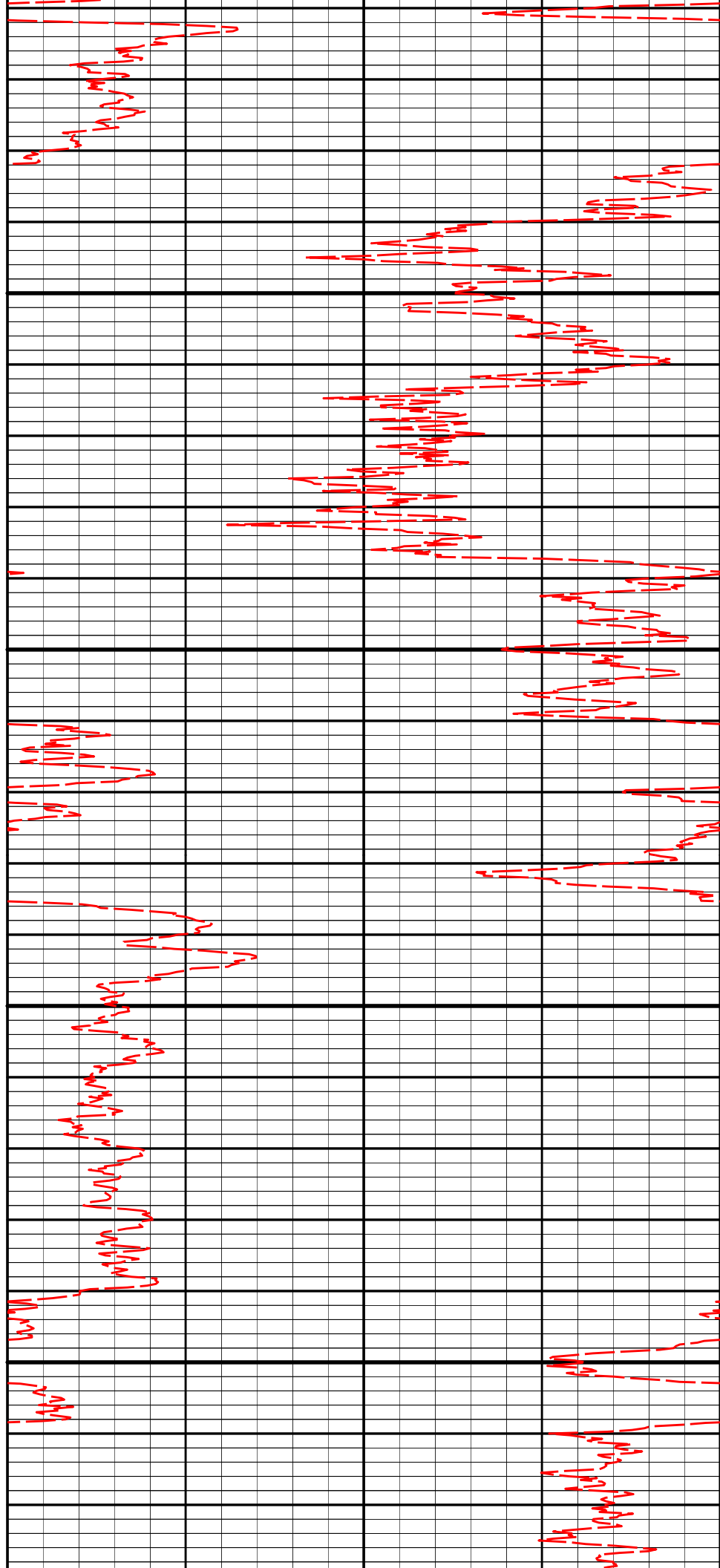
MAIN PASS 5" = 100'

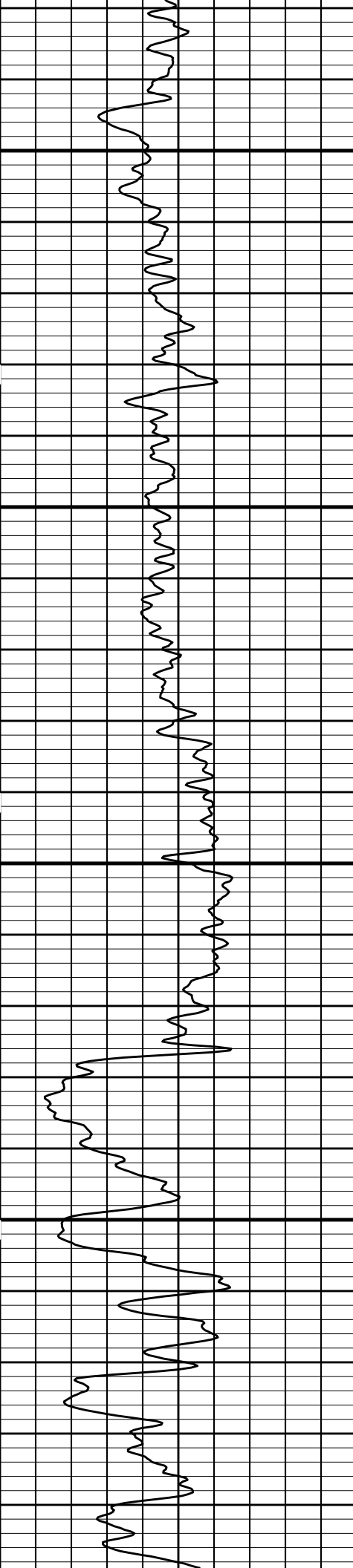




5200

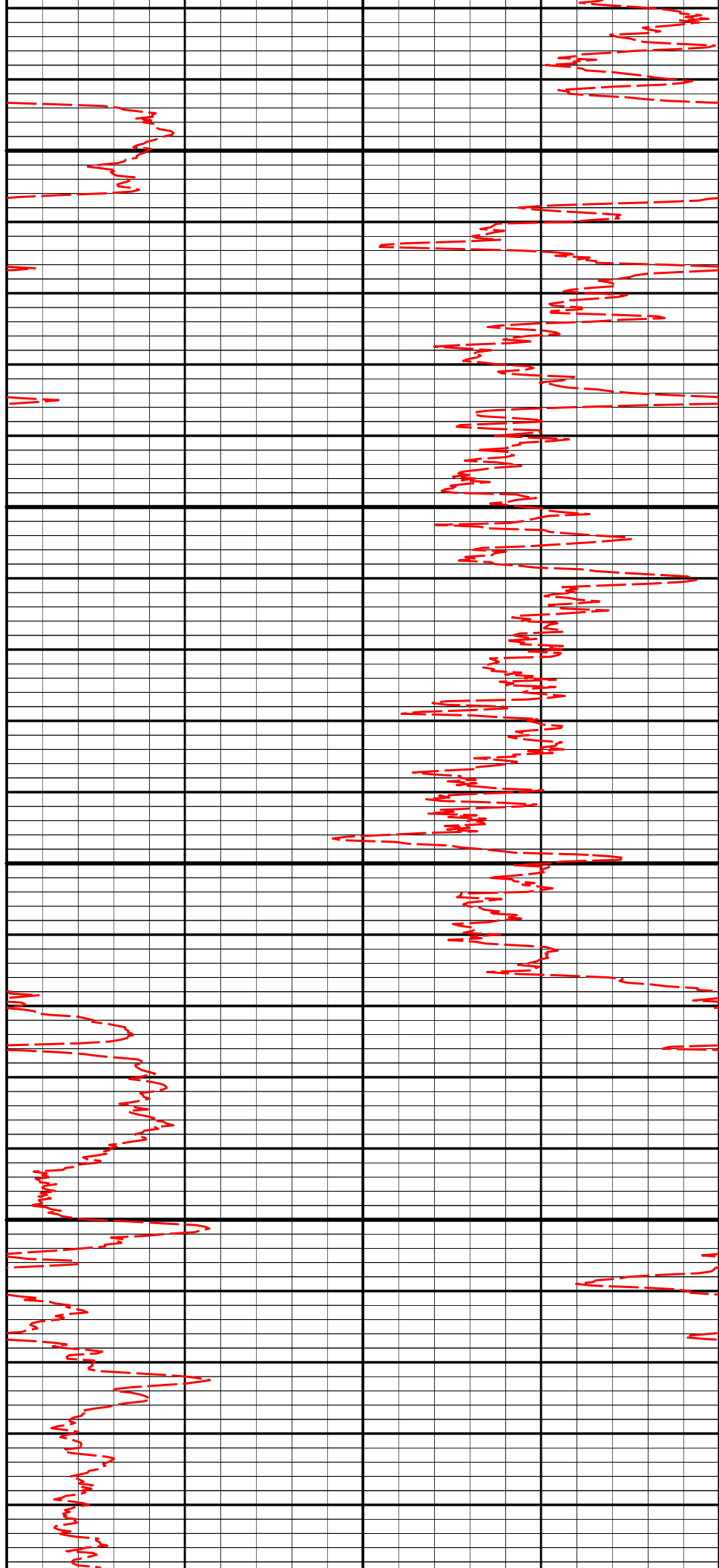
5300

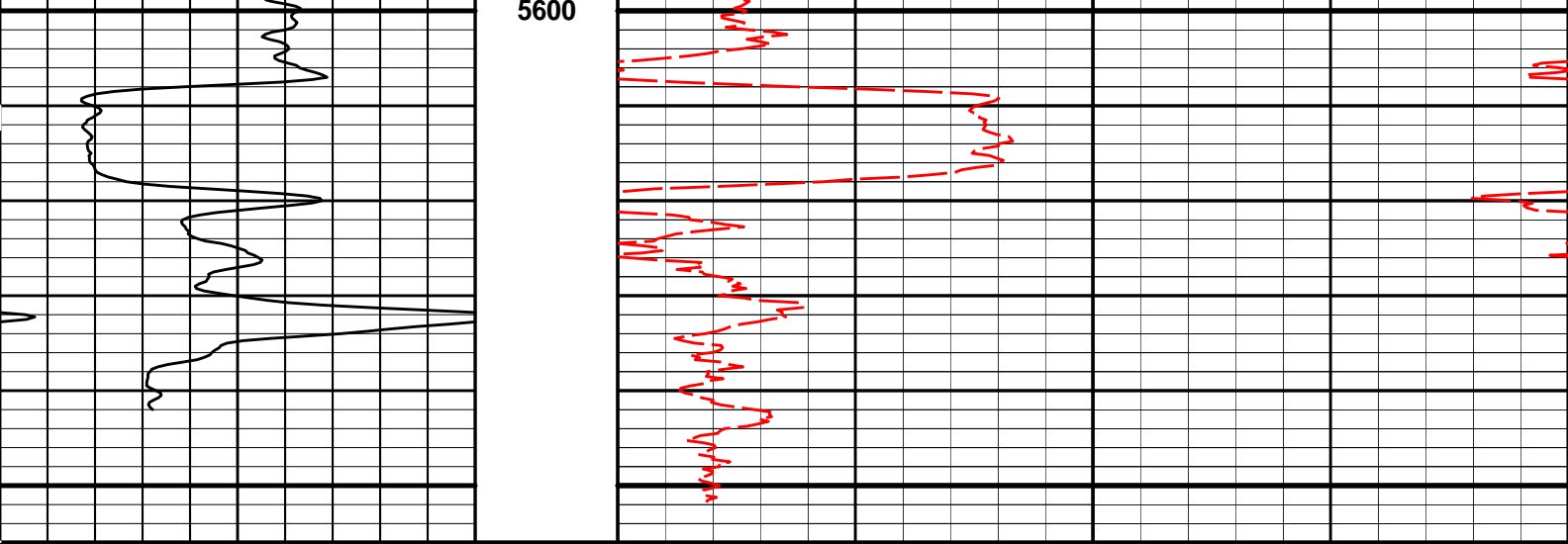




5400

5500





0 250 1 : 240 30 -10

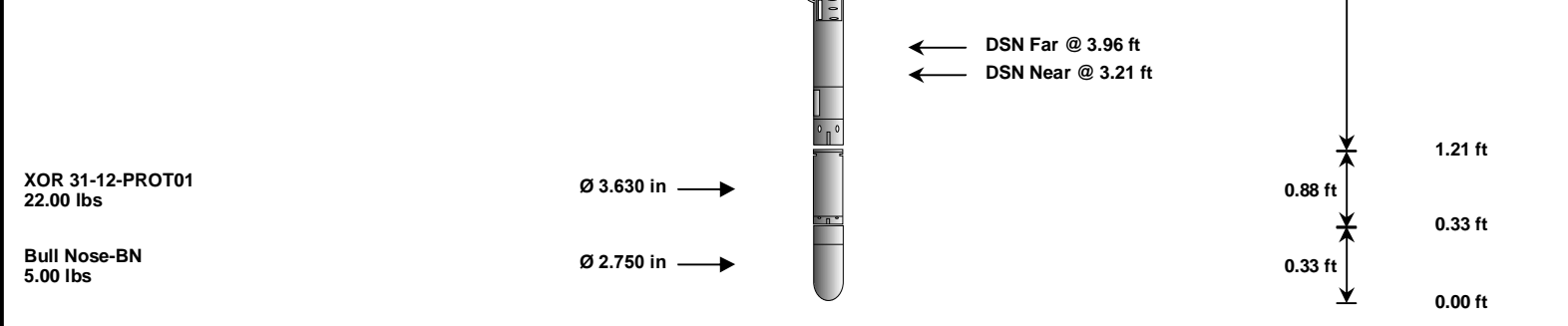
HALLIBURTON

Plot Time: 12-Nov-09 02:29:44
 Plot Range: 5090 ft to 5655.92 ft
 Data: {ActiveWell}\Well Based\DAQ Current\
 Plot File: \DSNT\IQ_POROSITY_5IN_RM

MAIN PASS 5" = 100'

HALLIBURTON **TOOL STRING DIAGRAM REPORT**

Description	O.D.	Diagram	Sensors @ Delays	Length	Accumulated Length
RWCH-B097 135.00 lbs	Ø 3.625 in →		← Load Cell @ 21.98 ft ← BH Temperature @ 21.42 ft	6.25 ft	25.67 ft
GTET-11294346 165.00 lbs	Ø 3.625 in →		← GammaRay @ 13.36 ft	8.52 ft	19.42 ft
DSNT-11301132 174.00 lbs	Ø 3.625 in →			9.69 ft	10.90 ft



Mnemonic	Tool Name	Serial Number	Weight (lbs)	Length (ft)	Accumulated Length (ft)	Max.Log. Speed (fpm)
RWCH	Releasable Wireline Cable Head	B097	135.00	6.25	19.42	300.00
GTET	Natural Gamma Ray Tool	11294346	165.00	8.52	10.90	60.00
DSNT	Dual Spaced Neutron	11301132	174.00	9.69	1.21	60.00
DCNT	DSN Decentralizer	11277440	50.00	5.13	*	300.00
XOR	Crossover DSNT 31 to 12 Pins	PROT01	22.00	0.88	0.33	300.00
BLNS	Bull Nose	BN	5.00	0.33	0.00	300.00
Total			551.00	25.67		
Data: SCHWAKE_A_1\0003 DSNT\002 12-Nov-09 02:06 Up @5656.0f						* Not included in Total Length and Length Accumulation.
						Date: 12-Nov-09 02:12:34

COMPANY	MERCHANT ENERGY PARTNERS, LLC		
WELL	SCHWAKE A-1		
FIELD	WEST PEETZ		
COUNTY	LOGAN	STATE	CO
HALLIBURTON		DUAL SPACED NEUTRON	