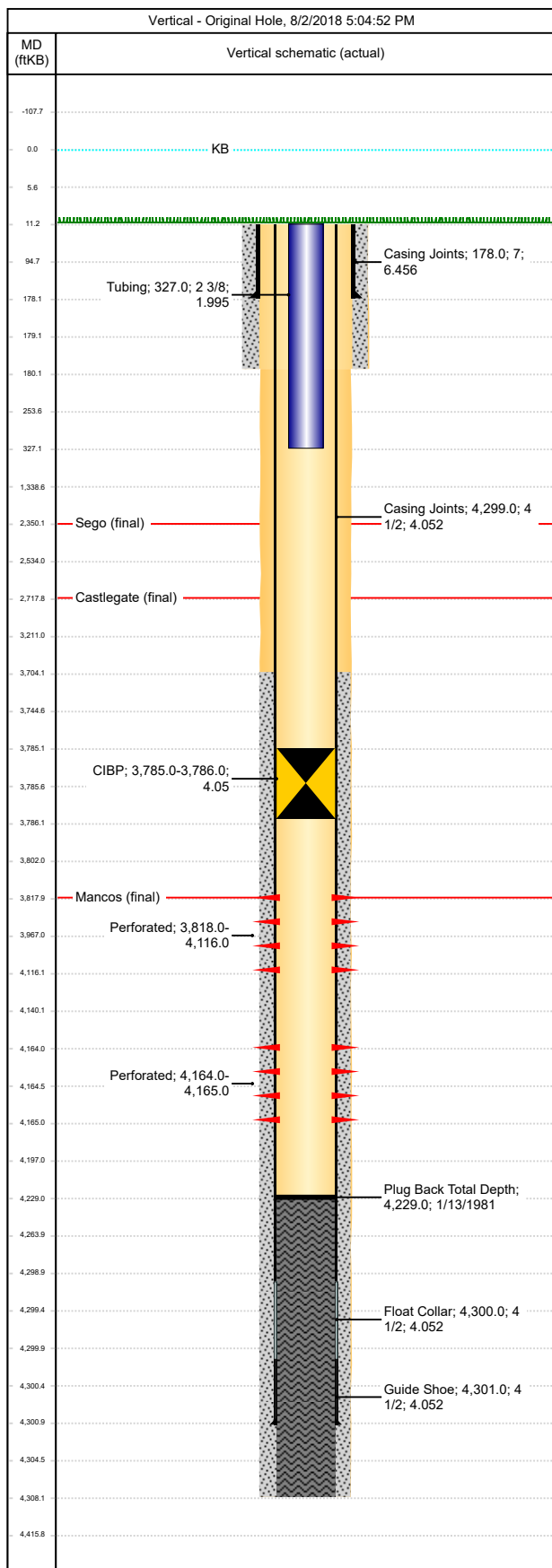




UGC - Downhole Well Profile

Well Name: CATHEDRAL FEDERAL H-27-3S-101W

API/UWI 05103085320000	Surface Legal Location SENE-S27-T3S-R101W-6PM	Field Name Cathedral	License #	State/Province CO	Well Configuration Type Vertical
Original KB Elevation (ft) 7,638	KB-Tubing Head Distance (ft) 11	Spud Date 12/16/1980 00:00	Rig Release Date 12/23/1980 00:00	PBTD (All) (ftKB) Original Hole - 4,229.0	Total Depth All (TVD) (ftKB) Original Hole - 4,308.0



Casing Strings						
Casing Description Surface	OD (in) 7	Wt/Len (lb/ft) 20.00	String Grade K-55	Top Connection	Set Depth (ftKB) 178.0	
Casing Components						
Item Description Casing Joints	Length (ft) 167	ID (in) 6.456	Joints 7	Drift (in) 6.331	P Collapse (psi) 2270	P Burst (psi) 3740
Casing Description Production	OD (in) 4 1/2	Wt/Len (lb/ft) 10.50	String Grade K-55	Top Connection ST&C	Set Depth (ftKB) 4,301.0	
Casing Components						
Item Description Casing Joints	Length (ft) 4288	ID (in) 4.052	Joints 108	Drift (in) 3.927	P Collapse (psi) 4010	P Burst (psi) 4790
Item Description Float Collar	Length (ft) 1	ID (in) 4.052	Joints 1	Drift (in)	P Collapse (psi)	P Burst (psi)
Item Description Guide Shoe	Length (ft) 1	ID (in) 4.052	Joints 1	Drift (in)	P Collapse (psi)	P Burst (psi)
Perforations						
Date	Top (ftKB)	Btm (ftKB)	Shot Dens (shots/ft)	Entered Shot Total	Linked Zone	
1/14/1981	3818	4116	0.1	24	Mancos, Original Hole	
1/14/1981	4164	4165	1.0	1	Mancos, Original Hole	
Tubing Strings						
Tubing Description Tubing - Workstring	Run Date 7/26/2018	String Length (ft) 316.00		Set Depth (ftKB) 327.0		
Item Des	Jts	OD (in)	Wt (lb/ft)	Grade	Len (ft)	Tensile Max (1000lbf)
Tubing	10	2 3/8	4.70	J-55	316	85
Rod Strings						
Rod Des	Run Date	Len (ft)	Set Depth (ftKB)	Comment		
Item Des	Jts	OD (in)	Wt (lb/ft)	Grade	Len (ft)	Com
Other In Hole						
Description CIBP	OD (in) 4.052	Top (ftKB) 3785	Run Date 7/27/2018	Pull Date	Comment	
Cement Stages						
Stg # 1	Description Surface Casing Cement	Top (ftKB) 11	Btm (ftKB) 180	Comment 65 sx Thixotropic + 12% calseal + 3% CaCl2.		
Stg # 1	Description Cement Plug	Top (ftKB) 4229	Btm (ftKB) 4308	Comment		
Stg # 1	Description Production Casing Cement	Top (ftKB) 3704	Btm (ftKB) 4308	Comment 66 sx Class "G" w/ 2% CaCl2 + 1/4 # Flocele.		