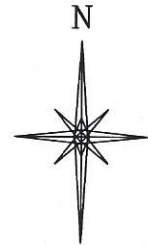
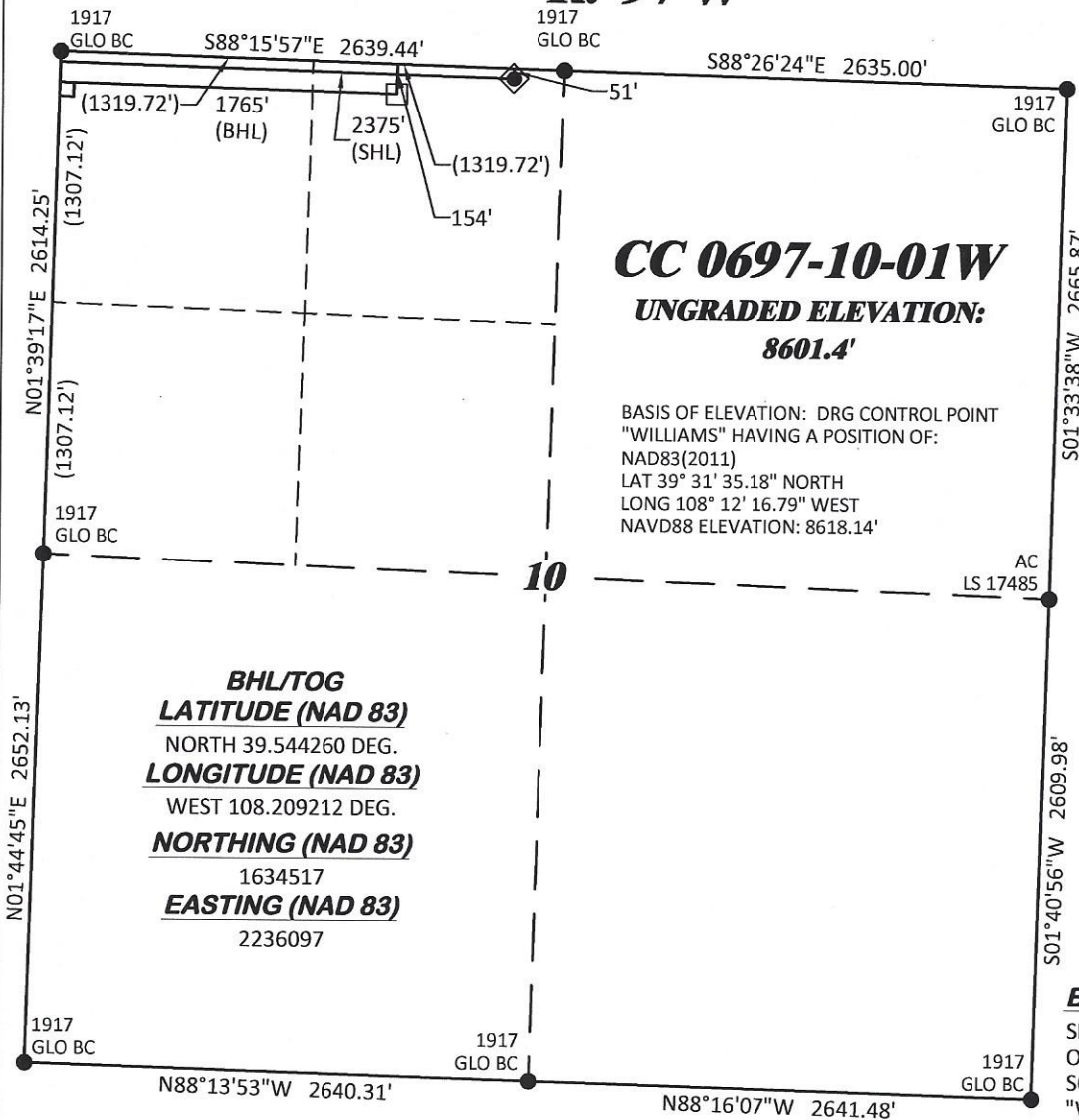


R. 97 W



GRID NORTH
SCALE 1" = 1000'
500' 0 1000'

T. 6 S.

BHL/TOG
LATITUDE (NAD 83)
NORTH 39.544260 DEG.
LONGITUDE (NAD 83)
WEST 108.209212 DEG.
NORTHING (NAD 83)
1634517
EASTING (NAD 83)
2236097

SHL
LATITUDE (NAD 83)
NORTH 39.544544 DEG.
LONGITUDE (NAD 83)
WEST 108.207049 DEG.
NORTHING (NAD 83)
1634601.82
EASTING (NAD 83)
2236709.33

BASIS OF BEARING/DATUM

SPCS COLORADO CENTRAL NAD 27 BASED
ON GPS OBSERVATIONS AND OPUS
SOLUTION ON DRG CONTROL POINT
"WILLIAMS" HAVING A POSITION OF:
NAD83(2011)
LAT 39° 31' 35.18" NORTH
LONG 108° 12' 16.79" WEST
NAVD88 ELEVATION: 8618.14'

THE NORTH LINE OF THE NW¼ OF
SECTION 10, MONUMENTED BY BLM BC'S
AND BEARING
S 88°15'57" E.

NOTES

1. GPS OPERATOR T. SHERRILL OBSERVED A PDOP OF 1.5.
2. ALL GPS OBSERVATIONS ARE IN COMPLIANCE WITH COGCC RULE No.215.
3. EXISTING IMPROVEMENTS WITHIN 500' OF LOCATION. SEE LOCATION DRAWING.
4. SURROUNDING SURFACE USE IS NATIVE BRUSH, NON CROP RANGELAND.

LEGEND

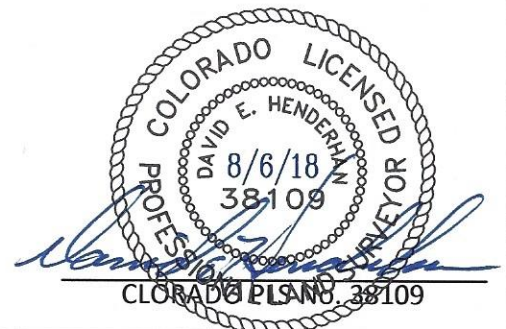
- ◆ WELL LOCATION
- APPROX. BHL
- └ DENOTES 90° TIE
- FOUND MONUMENT

SURVEYOR'S STATEMENT

I, DAVID E HENDERHAN, AN EMPLOYEE AND AGENT ON BEHALF OF D.R. GRIFFIN & ASSOCIATES, INC. STATE THE PLAT HEREON IS A CORRECT REPRESENTATION OF A SURVEY MADE UNDER MY SUPERVISION ON THE 4th DAY OF AUGUST, 2017 OF THE SHOWN CC 0697-10-01W AND THAT THE LOCATION HAS BEEN STAKED ON THE GROUND.

Notice: In accordance with Colorado State Law, any legal action based upon any defect in this survey plat must commence within three (3) years after first discovery of such defect. In no event, may any action based upon any defect in this survey plat be commenced more than ten (10) years from the date of certification shown hereon.

CC 610-21-41 PAD



DRG RIFFIN & ASSOCIATES, INC.
(307) 362-5028 1414 ELK ST., ROCK SPRINGS, WY 82901

DRAWN: 12/27/2017 - TCM/DEH

SCALE: 1" = 1000'

REVISED: 8/3/2018 - TCM

DRG JOB No. 21293

REVISED SHLS & BHLS

EXHIBIT A12

**PLAT OF DRILLING LOCATION IN
NENW, SECTION 10, FOR
LARAMIE ENERGY, LLC**

**51' F/NL, & 2375' F/WL, SECTION 10,
T. 6 S., R. 97 W, 6TH P.M.,
GARFIELD COUNTY, CLORADO**