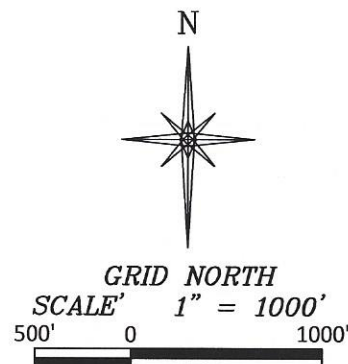
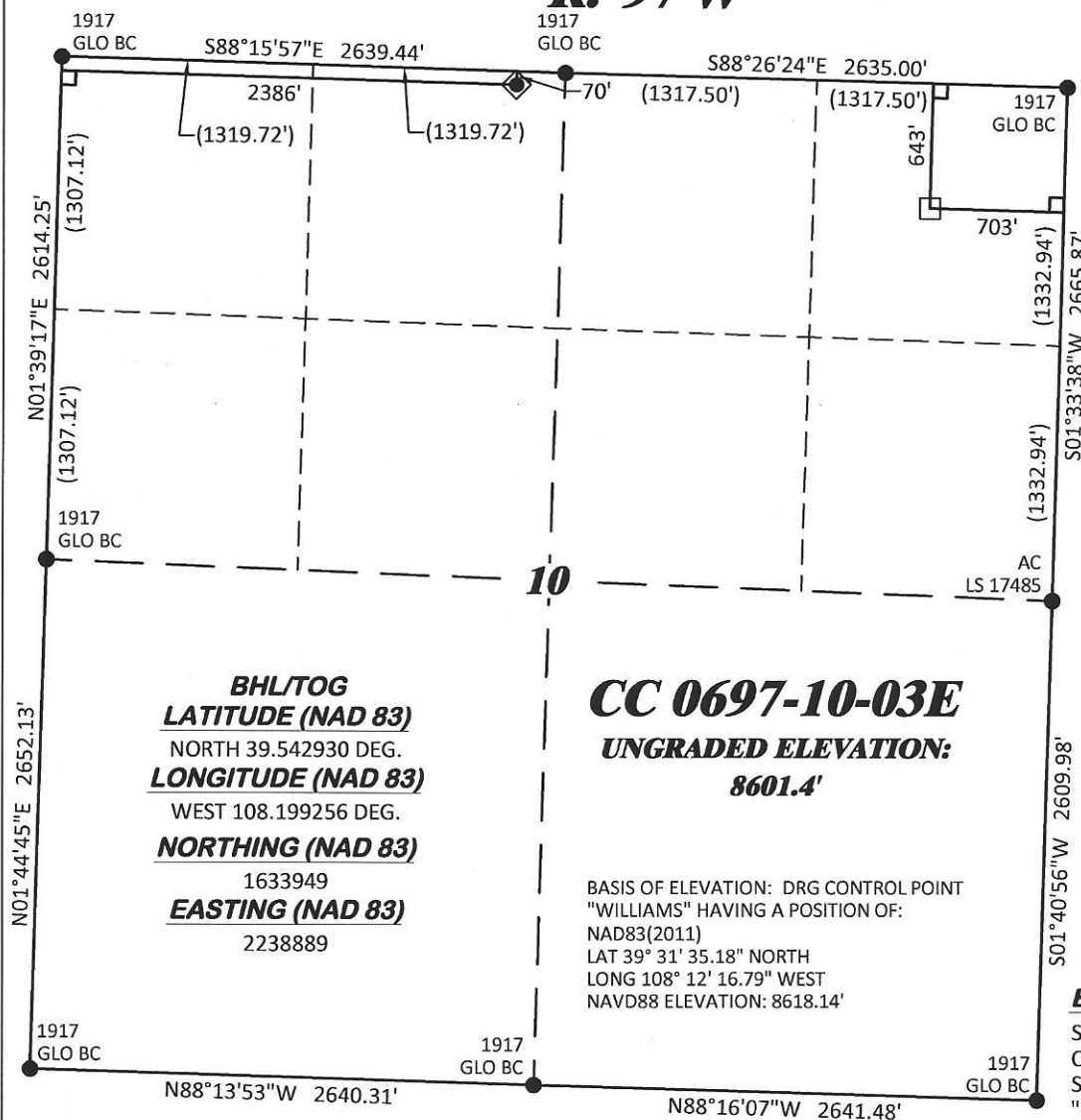


**R. 97 W**



**T. 6 S.**

**BHL/TOG**  
**LATITUDE (NAD 83)**  
NORTH 39.542930 DEG.  
**LONGITUDE (NAD 83)**  
WEST 108.199256 DEG.  
**NORTHING (NAD 83)**  
1633949  
**EASTING (NAD 83)**  
2238889

**CC 0697-10-03E**  
**UNGRADED ELEVATION:**  
**8601.4'**

BASIS OF ELEVATION: DRG CONTROL POINT  
"WILLIAMS" HAVING A POSITION OF:  
NAD83(2011)  
LAT 39° 31' 35.18" NORTH  
LONG 108° 12' 16.79" WEST  
NAVD88 ELEVATION: 8618.14'

**SHL**  
**LATITUDE (NAD 83)**  
NORTH 39.544490 DEG.  
**LONGITUDE (NAD 83)**  
WEST 108.207013 DEG.  
**NORTHING (NAD 83)**  
1634581.65  
**EASTING (NAD 83)**  
2236718.98

**BASIS OF BEARING/DATUM**  
SPCS COLORADO CENTRAL NAD 27 BASED  
ON GPS OBSERVATIONS AND OPUS  
SOLUTION ON DRG CONTROL POINT  
"WILLIAMS" HAVING A POSITION OF:  
NAD83(2011)  
LAT 39° 31' 35.18" NORTH  
LONG 108° 12' 16.79" WEST  
NAVD88 ELEVATION: 8618.14'

**NOTES**

1. GPS OPERATOR T. SHERRILL OBSERVED A PDOP OF 1.5.
2. ALL GPS OBSERVATIONS ARE IN COMPLIANCE WITH COGCC RULE No.215.
3. EXISTING IMPROVEMENTS WITHIN 500' OF LOCATION. SEE LOCATION DRAWING.
4. SURROUNDING SURFACE USE IS NATIVE BRUSH, NON CROP RANGELAND.

**SURVEYOR'S STATEMENT**

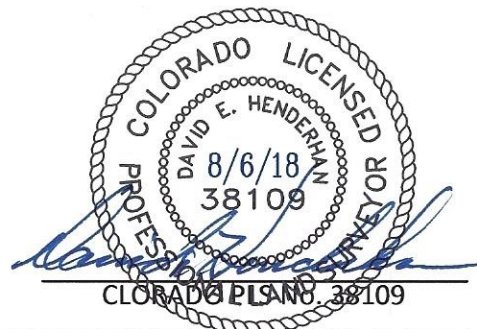
I, DAVID E HENDERHAN, AN EMPLOYEE AND AGENT ON BEHALF OF D.R. GRIFFIN & ASSOCIATES, INC. STATE THE PLAT HEREON IS A CORRECT REPRESENTATION OF A SURVEY MADE UNDER MY SUPERVISION ON THE 4th DAY OF AUGUST, 2017 OF THE SHOWN CC 0697-10-03E AND THAT THE LOCATION HAS BEEN STAKED ON THE GROUND.

Notice: In accordance with Colorado State Law, any legal action based upon any defect in this survey plat must commence within three (3) years after first discovery of such defect. In no event, may any action based upon any defect in this survey plat be commenced more than ten (10) years from the date of certification shown hereon.

**LEGEND**

- ◆ WELL LOCATION
- APPROX. BHL
- └ DENOTES 90° TIE
- FOUND MONUMENT

THE NORTH LINE OF THE NW¼ OF SECTION 10, MONUMENTED BY BLM BC'S AND BEARING S 88°15'57" E.



**CC 610-21-41 PAD**

**DRG** RIFFIN & ASSOCIATES, INC.  
(307) 362-5028 1414 ELK ST., ROCK SPRINGS, WY 82901

**DRAWN: 12/27/2017 - TCM/DEH**

**SCALE: 1" = 1000'**

**REVISED: 8/3/2018 - TCM**

**DRG JOB No. 21293**

**REVISED SHLS & BHLS**

**EXHIBIT B10**

**PLAT OF DRILLING LOCATION IN  
NENW, SECTION 10, FOR  
LARAMIE ENERGY, LLC**

**70' F/NL, & 2386' F/WL, SECTION 10,  
T. 6 S., R. 97 W, 6TH P.M.,  
GARFIELD COUNTY, COLORADO**