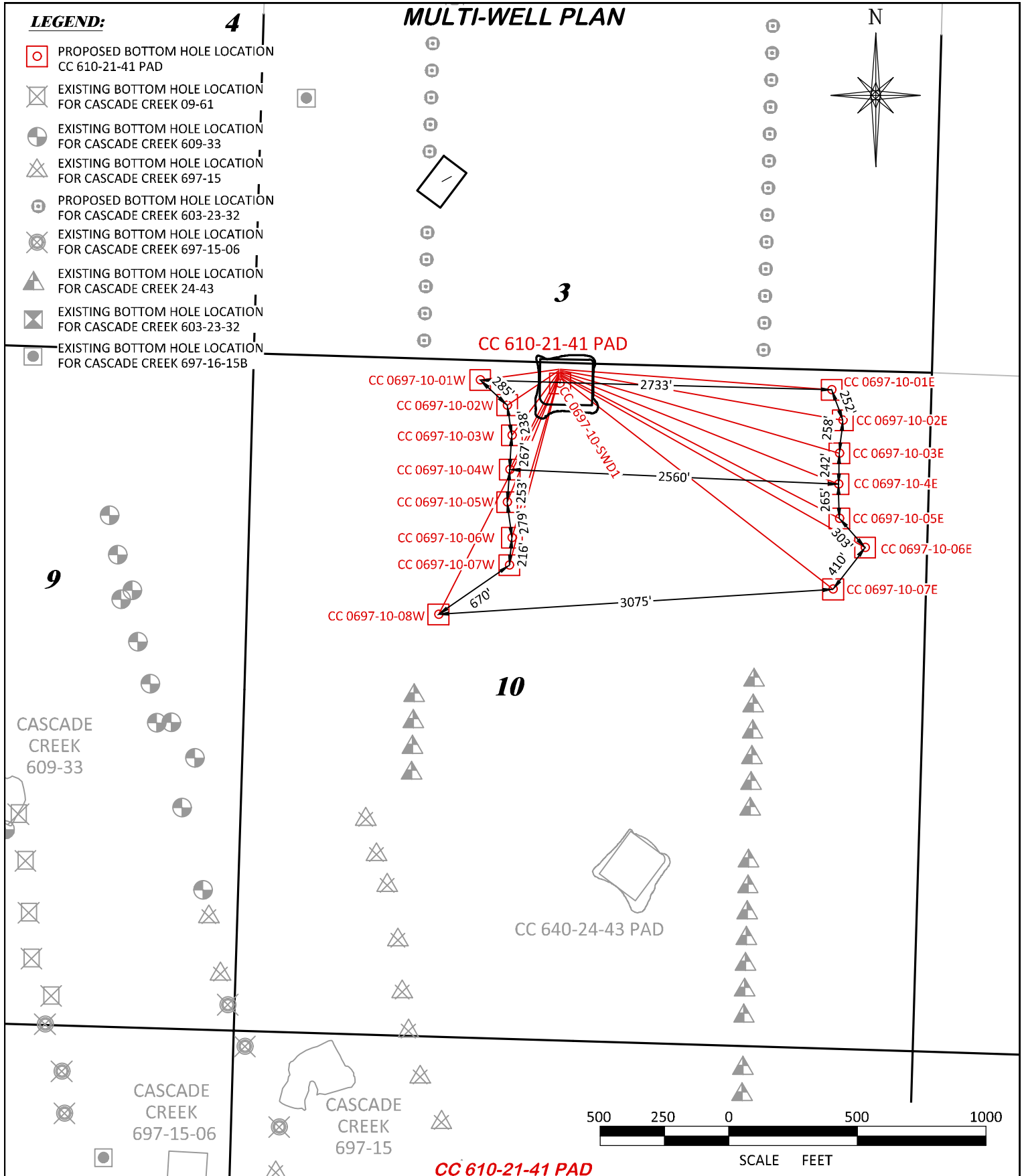


LEGEND:**4****MULTI-WELL PLAN**

-  PROPOSED BOTTOM HOLE LOCATION
CC 610-21-41 PAD
-  EXISTING BOTTOM HOLE LOCATION
FOR CASCADE CREEK 09-61
-  EXISTING BOTTOM HOLE LOCATION
FOR CASCADE CREEK 609-33
-  EXISTING BOTTOM HOLE LOCATION
FOR CASCADE CREEK 697-15
-  PROPOSED BOTTOM HOLE LOCATION
FOR CASCADE CREEK 603-23-32
-  EXISTING BOTTOM HOLE LOCATION
FOR CASCADE CREEK 697-15-06
-  EXISTING BOTTOM HOLE LOCATION
FOR CASCADE CREEK 24-43
-  EXISTING BOTTOM HOLE LOCATION
FOR CASCADE CREEK 603-23-32
-  EXISTING BOTTOM HOLE LOCATION
FOR CASCADE CREEK 697-16-15B

**RIFFIN & ASSOCIATES, INC.**

(307) 362-5028

1414 ELK ST., ROCK SPRINGS, WY 82901

DRAWN: 12/27/2017 - TCM/DEH

SCALE: 1" = 1000'

REVISED: 8/3/2018 - TCM

DRG JOB No. 21293

REVISED SHLS & BHLs

15 MULTI

MULTI-WELL PLAN**LARAMIE ENERGY, LLC****CC 610-21-41 PAD****SECTION 10, T. 6 S., R. 97 W, 6th P.M.,
GARFIELD COUNTY, COLORADO****PAD LOCATED IN NENW OF
SECTION 10, T. 6 S., R. 97 W, 6th P.M.,
GARFIELD COUNTY, COLORADO**