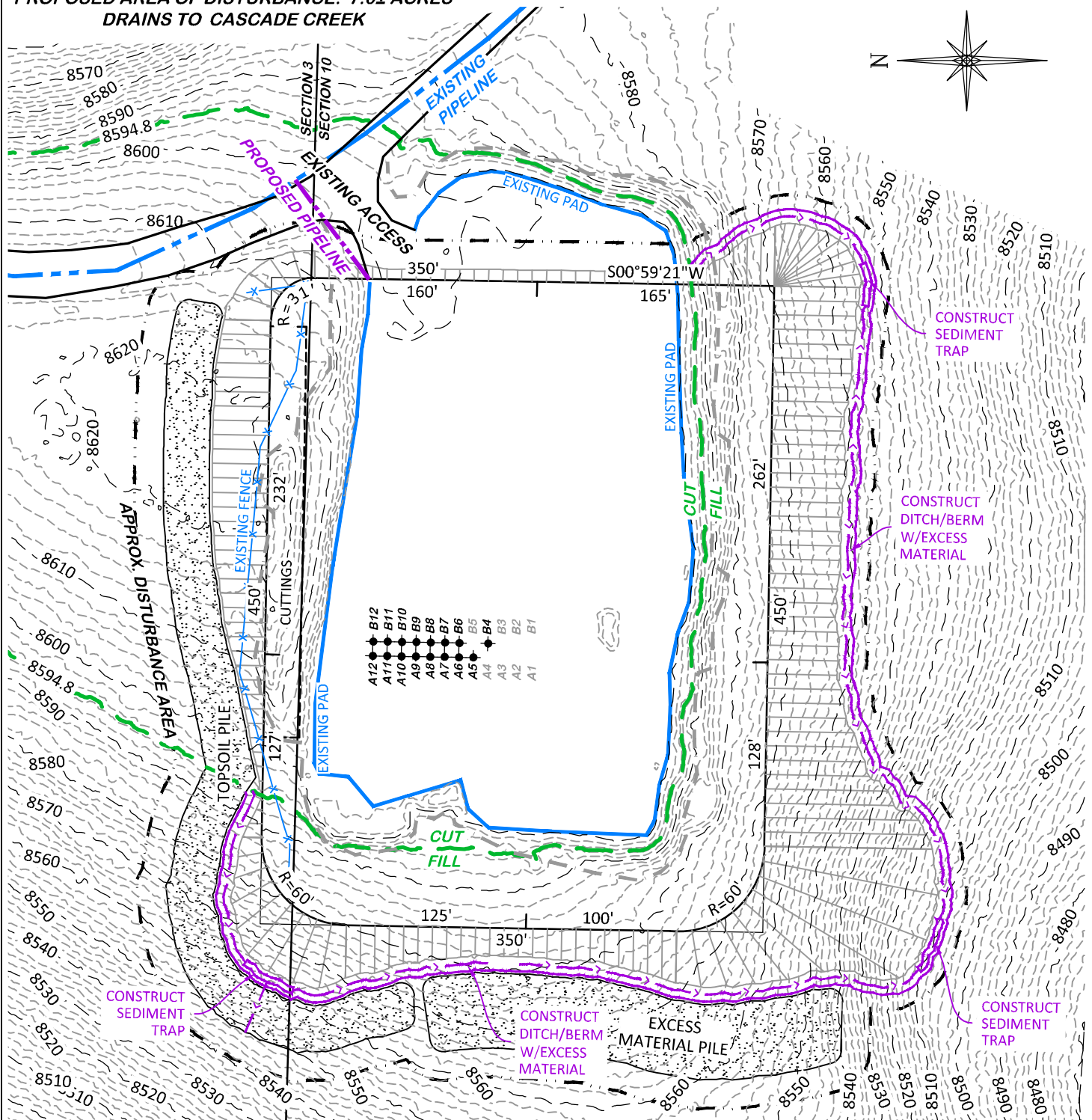


UNGRADED ELEVATION: 8601.3'

FINAL ELEVATION: 8594.8'

PROPOSED AREA OF DISTURBANCE: 7.0± ACRES
DRAINS TO CASCADE CREEK

STORMWATER BMP's



**BEFORE DIGGING
CALL FOR
UTILITY LINE LOCATION**

CC 610-21-41 PAD



RIFFIN & ASSOCIATES, INC.

(307) 362-5028

1414 ELK ST., ROCK SPRINGS, WY 82901

DRAWN: 12/27/2017 - TCM/DEH

SCALE: 1" = 100'

REVISED: 8/3/2018 - TCM

DRG JOB No. 21293

REVISED SHLS & BHLs

06 STM WTR

STORMWATER BMP's

LARAMIE ENERGY, LLC

CC 610-21-41 PAD

**NENW, SECTION 10, T. 6 S., R. 97 W., 6th P.M.,
GARFIELD COUNTY, COLORADO**