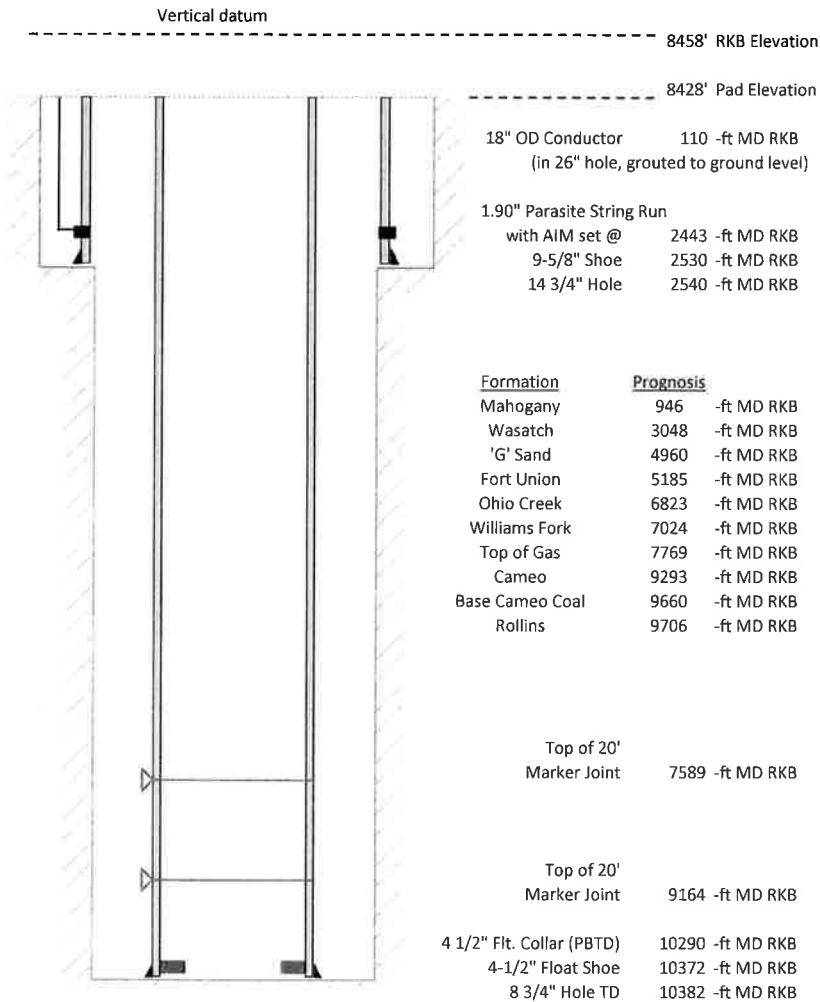


Laramie Energy, LLC
CC 0697-03-17W
Slot B-12
H&P 522 (30-ft KB)

API # : 05-045-23815-00
 Lot 11/S3/T6S/R97W/6th PM
 Garfield County, CO
 Date of diagram : 8/2/2018



Cementing details

8-5/8" 24# Surface Csg	Lead	Tail
Density (ppg)	12.3	12.8
Volume (sx)	1015	292
Yield (cf/sx)	2.38	2.11
Top (ft RKB)	30	2030
Bottom (ft RKB)	2030	2530
Returns (full or partial)	none	none

4-1/2" 11.6# Prod Csg	Lead	Tail
Density (ppg)	12.5	13.0
Volume (sx)	1062	545
Yield (cf/sx)	1.94	2.06
Est Top (ft RKB)	2030	7483
Est Bottom (ft RKB)	7483	10372
Returns (full or partial)	partial	partial

Displacement
8.3 ppg
160 bbls

Other Remarks : No returns throughout job, 21 bbl top job on surface. Production-10 bbls spacer to surface no returns in disp