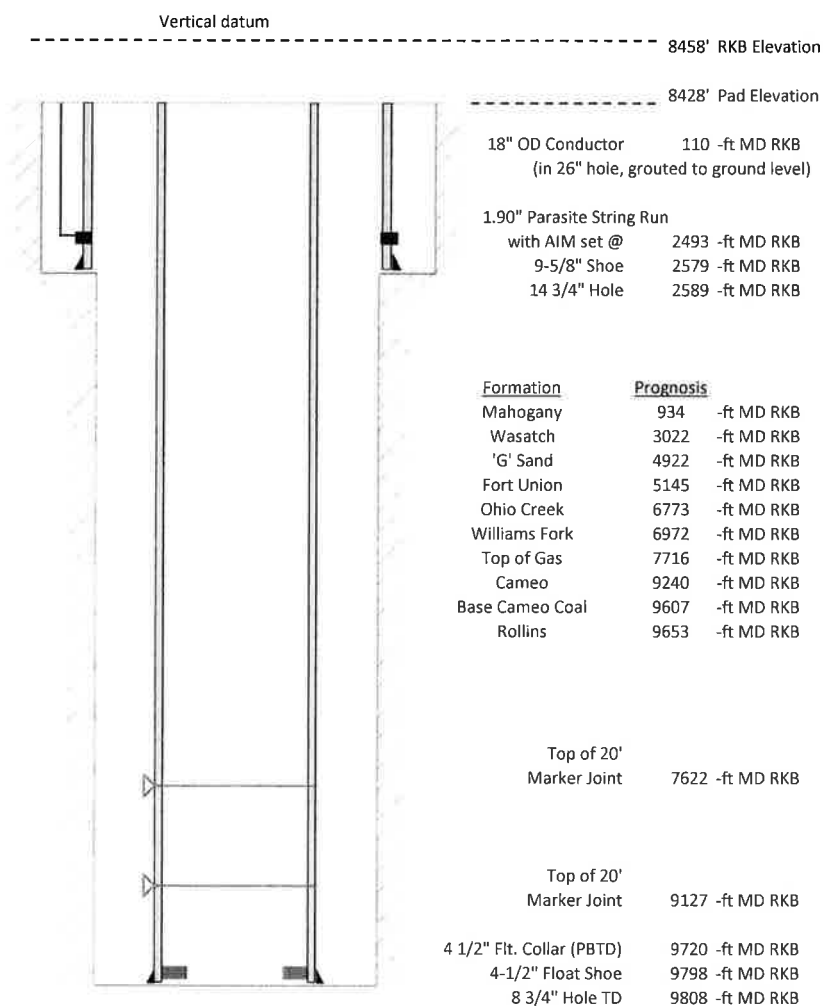


**Laramie Energy, LLC**  
**CC 0697-03-16W**  
**Slot B-11**  
**H&P 522 (30-ft KB)**

API # : 05-045-23810-00  
 Lot 11/S3/T6S/R97W/6th PM  
 Garfield County, CO  
 Date of diagram : 7/27/2018



#### Cementing details

8-5/8" 24# Surface Csg	Lead	Tail
Density (ppg)	12.3	12.8
Volume (sx)	1020	295
Yield (cf/sx)	2.38	2.11
Top (ft RKB)	50	2030
Bottom (ft RKB)	2030	2579
Returns (full or partial)	Partial	Partial

4-1/2" 11.6# Prod Csg	Lead	Tail
Density (ppg)	12.5	13.0
Volume (sx)	1068	445
Yield (cf/sx)	1.94	2.06
Est Top (ft RKB)	2030	7516
Est Bottom (ft RKB)	7516	9798
Returns (full or partial)	Full	Full

Displacement
8.3 ppg
150.7 bbls

Other Remarks : Partial returns throughout job, 2 bbl top job on surface. Full returns through job-partial in disp, 10 bbls spacer back on production