

## HALLIBURTON

## Cementing Job Summary

*The Road to Excellence Starts with Safety*

|  |                              |   |                           |               |                        |                |               |              |                     |               |
|--|------------------------------|---|---------------------------|---------------|------------------------|----------------|---------------|--------------|---------------------|---------------|
| Sold To #: 375989                                | Ship To #: 3892948           | Quote #: 0022489066                     | Sales Order #: 0905133090 |               |                        |                |               |              |                     |               |
| Customer: CONFLUENCE DJ LLC-EBUS                 |                              | Customer Rep: Justin Gale               |                           |               |                        |                |               |              |                     |               |
| Well Name: DESHA                                 | Well #: 4-15-1               | API/UWI #: 05-123-47343-00              |                           |               |                        |                |               |              |                     |               |
| Field: WATTENBERG                                | City (SAP): LOCHBUIE         | County/Parish: WELD                     | State: COLORADO           |               |                        |                |               |              |                     |               |
| Legal Description: SW SW-33-1N-65W-635FSL-450FWL |                              |   |                           |               |                        |                |               |              |                     |               |
| Contractor:                                      |                              | Rig/Platform Name/Num:                  |                           |               |                        |                |               |              |                     |               |
| Job BOM: 7526 7526                               |                              |   |                           |               |                        |                |               |              |                     |               |
| Well Type: HORIZONTAL OIL                        |                              |   |                           |               |                        |                |               |              |                     |               |
| Sales Person: HALAMERICA\HX38199                 |                              | Srv Supervisor: Kendall Broom - H194727 |                           |               |                        |                |               |              |                     |               |
| Job  |                              |   |                           |               |                        |                |               |              |                     |               |
| Formation Name                                   |                              |   |                           |               |                        |                |               |              |                     |               |
| Formation Depth (MD)                             | Top                          | Bottom                                  |                           |               |                        |                |               |              |                     |               |
| Form Type  | BHST                         |   |                           |               |                        |                |               |              |                     |               |
| Job depth MD                                     | 9785ft                       | Job Depth TVD                           |                           |               |                        |                |               |              |                     |               |
| Water Depth                                      |                              | Wk Ht Above Floor                       |                           |               |                        |                |               |              |                     |               |
| Perforation Depth (MD)                           | From                         | To                                      |                           |               |                        |                |               |              |                     |               |
| Well Data  |                              |   |                           |               |                        |                |               |              |                     |               |
| Description                                      | New / Used                   | Size in                                 | ID in                     | Weight lbm/ft | Thread                 | Grade          | Top MD ft     | Bottom MD ft | Top TVD ft          | Bottom TVD ft |
| Casing   |                              | 9.625                                   | 8.921                     | 36            |                        |                | 0             | 1560         |                     |               |
| Casing   |                              | 5.5                                     | 4.778                     | 20            |                        |                | 0             | 9785         |                     |               |
| Open Hole Section                                |                              |   | 8.5                       |               |                        |                | 1560          | 9830         |                     |               |
| Tools and Accessories                            |                              |   |                           |               |                        |                |               |              |                     |               |
| Type   | Size in                      | Qty                                     | Make                      | Depth ft      |                        | Type           | Size in       | Qty          | Make                |               |
| Guide Shoe                                       | 5.5                          |   |                           |               |                        | Top Plug       | 5.5           |              | HES                 |               |
| Float Shoe                                       | 5.5                          |   |                           |               |                        | Bottom Plug    | 5.5           | 1            | HES                 |               |
| Float Collar                                     | 5.5                          |   |                           |               |                        | SSR plug set   | 5.5           |              | HES                 |               |
| Insert Float                                     | 5.5                          |   |                           |               |                        | Plug Container | 5.5           |              | HES                 |               |
| Stage Tool                                       | 5.5                          |   |                           |               |                        | Centralizers   | 5.5           |              | HES                 |               |
| Fluid Data                                       |                              |   |                           |               |                        |                |               |              |                     |               |
| Stage/Plug #: 1                                  |                              |   |                           |               |                        |                |               |              |                     |               |
| Fluid #  | Stage Type                   | Fluid Name                              | Qty                       | Qty UoM       | Mixing Density lbm/gal | Yield ft3/sack | Mix Fluid Gal | Rate bbl/min | Total Mix Fluid Gal |               |
| 1  | OBM                          |   | 219                       | bbl           | 9.5                    |                |               |              |                     |               |
| Stage/Plug #: 2                                  |                              |   |                           |               |                        |                |               |              |                     |               |
| Fluid #  | Stage Type                   | Fluid Name                              | Qty                       | Qty UoM       | Mixing Density lbm/gal | Yield ft3/sack | Mix Fluid Gal | Rate bbl/min | Total Mix Fluid Gal |               |
| 2  | 10.5 lb/gal Tuned Spacer III | Tuned Spacer III                        | 160                       | bbl           | 10.5                   | 6.26           |               |              |                     |               |

last updated on 9/19/2018 10:24:44 AM

Page 1 of 3

## HALLIBURTON

## Cementing Job Summary

| Fluid #             | Stage Type         | Fluid Name   | Qty                 | Qty UoM | Mixing Density<br>lbm/gal | Yield<br>ft3/sack | Mix Fluid<br>Gal       | Rate<br>bbl/min | Total Mix Fluid<br>Gal |
|---------------------|--------------------|--|---------------------|---------|---------------------------|-------------------|------------------------|-----------------|------------------------|
| 3                   | TergoVis           | CMT PKG TERGOVIS I                                   | 300                 | bbl     | 10.6                      | 3.63              |                        |                 |                        |
|                     |                    |  |                     |         |                           |                   |                        |                 |                        |
| Fluid #             | Stage Type         | Fluid Name   | Qty                 | Qty UoM | Mixing Density<br>lbm/gal | Yield<br>ft3/sack | Mix Fluid<br>Gal       | Rate<br>bbl/min | Total Mix Fluid<br>Gal |
| 4                   | ElastiCem          | ELASTICEM (TM) SYSTEM                                | 1005                | sack    | 14.4                      | 1.7               |                        | 8               | 7.3                    |
|                     |                    |  |                     |         |                           |                   |                        |                 |                        |
| Fluid #             | Stage Type         | Fluid Name   | Qty                 | Qty UoM | Mixing Density<br>lbm/gal | Yield<br>ft3/sack | Mix Fluid<br>Gal       | Rate<br>bbl/min | Total Mix Fluid<br>Gal |
| 5                   | MMCR ahead of plug | MMCR ahead of plug                                   | 3                   | bbl     | 8.34                      |                   |                        |                 |                        |
| 0.50 gal/bbl        |                    | MICRO MATRIX CEMENT RETARDER, 5 GAL PAIL (100003781) |                     |         |                           |                   |                        |                 |                        |
|                     |                    |  |                     |         |                           |                   |                        |                 |                        |
| Fluid #             | Stage Type         | Fluid Name   | Qty                 | Qty UoM | Mixing Density<br>lbm/gal | Yield<br>ft3/sack | Mix Fluid<br>Gal       | Rate<br>bbl/min | Total Mix Fluid<br>Gal |
| 6                   | MMCR Displacement  | MMCR Displacement                                    | 30                  | bbl     | 8.34                      |                   |                        |                 |                        |
| 0.50 gal/bbl        |                    | MICRO MATRIX CEMENT RETARDER, 5 GAL PAIL (100003781) |                     |         |                           |                   |                        |                 |                        |
|                     |                    |  |                     |         |                           |                   |                        |                 |                        |
| Fluid #             | Stage Type         | Fluid Name   | Qty                 | Qty UoM | Mixing Density<br>lbm/gal | Yield<br>ft3/sack | Mix Fluid<br>Gal       | Rate<br>bbl/min | Total Mix Fluid<br>Gal |
| 7                   | Displacement       | Displacement   | 189                 | bbl     | 8.34                      |                   |                        |                 |                        |
| 0.30 lbm/bbl        |                    | BE-3S, 50 LB BOX (101382962)                         |                     |         |                           |                   |                        |                 |                        |
| 0.02 gal/bbl        |                    | CLA-WEB - TOTE (101985045)                           |                     |         |                           |                   |                        |                 |                        |
|                     |                    |  |                     |         |                           |                   |                        |                 |                        |
| Cement Left In Pipe |                    | Amount   | ft                  |         | Reason                    |                   |                        | Shoe Joint      |                        |
| Mix Water:          |                    | pH 7   | Mix Water Chloride: |         | 0 ppm                     |                   | Mix Water Temperature: |                 | 77 °F °C               |
|                     |                    |  |                     |         |                           |                   |                        |                 |                        |
|                     |                    |  |                     |         |                           |                   |                        |                 |                        |
|                     |                    |  |                     |         |                           |                   |                        |                 |                        |
| Comment             |                    |  |                     |         |                           |                   |                        |                 |                        |

## 2.0 Real-Time Job Summary

## 2.1 Job Event Log

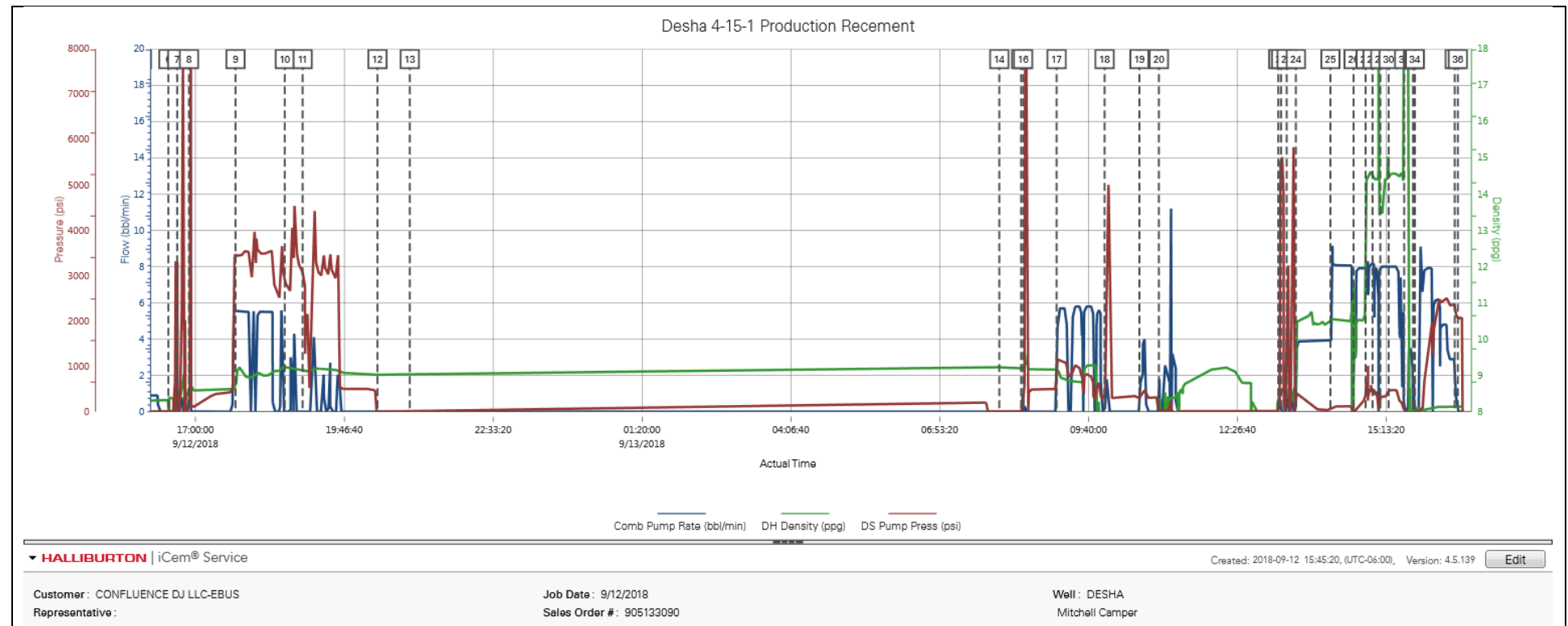
| Type  | Seq. No. | Activity                 | Graph Label              | Date      | Time     | Source | Comb Pump Rate<br>(bbl/min) | DH Density<br>(ppg) | DS Pump Press<br>(psi) | Comments   |
|-------|----------|--------------------------|--------------------------|-----------|----------|--------|-----------------------------|---------------------|------------------------|--|
| Event | 1        | Call Out                 | Call Out                 | 9/12/2018 | 11:00:00 | USER   |                             |                     |                        | Called crew out to be on location at 1400                                      |
| Event | 2        | Depart Shop for Location | Depart Shop for Location | 9/12/2018 | 14:00:00 | USER   |                             |                     |                        | Held a safety meeting before leaving for location                              |
| Event | 3        | Arrive At Loc            | Arrive At Loc            | 9/12/2018 | 14:20:00 | USER   |                             |                     |                        | Arrive at location and met with the company man                                |
| Event | 4        | Rig-up Lines             | Rig-up Lines             | 9/12/2018 | 14:30:00 | USER   |                             |                     |                        | Held a hazard hunt before spotting in trucks and rigging up                    |
| Event | 5        | Safety Meeting           | Safety Meeting           | 9/12/2018 | 16:00:00 | USER   | 0.90                        | 8.31                | 3.00                   | Held a safety meeting with the rig to discuss the operation and safety         |
| Event | 6        | Start Job                | Start Job                | 9/12/2018 | 16:29:38 | COM5   | 0.00                        | 8.32                | 2.00                   |  |
| Event | 7        | Test Lines               | Test Lines               | 9/12/2018 | 16:39:34 | COM5   | 0.00                        | 8.58                | 3121.00                | Tested our lines to 8000 psi   |
| Event | 8        | Test Lines               | Test Lines               | 9/12/2018 | 16:52:47 | COM5   | 0.00                        | 8.58                | 54.00                  | Tested wire line plug  |
| Event | 9        | Pump Well Fluid          | Pump Spacer 1            | 9/12/2018 | 17:44:52 | COM5   | 5.60                        | 8.75                | 3464.00                | Pumped down the plug 112 bbls. Pumped 220 bbls obm to circulate out the water. |
| Event | 10       | Shutdown                 | Shutdown                 | 9/12/2018 | 18:40:02 | COM5   | 0.00                        | 9.23                | 2886.00                |  |
| Event | 11       | Set Tool                 | Set Tool                 | 9/12/2018 | 19:00:00 | USER   | 0.00                        | 9.16                | 3082.00                |  |
| Event | 12       | End Job                  | End Job                  | 9/12/2018 | 20:23:49 | COM5   | 0.00                        | 9.02                | -6.00                  |  |
| Event | 13       | Depart Location for Shop | Depart Location for Shop | 9/12/2018 | 21:00:00 | USER   |                             |                     |                        |  |
| Event | 14       | Safety Meeting - Pre Job | Safety Meeting - Pre Job | 9/13/2018 | 08:00:00 | USER   | 0.00                        | 9.23                | 1.00                   | Held a safety meeting with all parties to discuss the operation and safety     |
| Event | 15       | Start Job                | Start Job                | 9/13/2018 | 08:24:36 | COM5   | 0.00                        | 9.20                | 1.00                   |  |
| Event | 16       | Test Lines               | Test Lines               | 9/13/2018 | 08:26:49 | COM5   | 0.00                        | 9.21                | 554.00                 | Test wire line to 8000 psi   |

|       |    |                   |                   |           |          |      |      |       |         |  |
|-------|----|-------------------|-------------------|-----------|----------|------|------|-------|---------|--|
| Event | 17 | Pump Well Fluid   | Other             | 9/13/2018 | 09:04:16 | COM5 | 1.70 | 9.17  | 595.00  | Pumped 219 bbls. Pumped down wire line   |
| Event | 18 | Pressure Up Well  | Pressure up well  | 9/13/2018 | 09:58:00 | COM5 | 0.00 | 7.54  | 321.00  | Set Plug. Pressured up to 5000 psi. Then bled off to 2300 psi.   |
| Event | 19 | Pump Well Fluid   | Other             | 9/13/2018 | 10:36:56 | COM5 | 0.00 | 7.57  | 284.00  | Pumped 20 bbls well fluid  |
| Event | 20 | End Job           | End Job           | 9/13/2018 | 10:58:43 | COM5 | 0.00 | 7.53  | 11.00   | Completed pumping for wire line  |
| Event | 21 | Start Job         | Start Job         | 9/13/2018 | 13:12:25 | COM5 |      |       |         |  |
| Event | 22 | Test Lines        | Test Lines        | 9/13/2018 | 13:15:28 | COM5 | 0.00 | 8.51  | 5638.00 | Tested lines to 5765 psi   |
| Event | 23 | Pump Spacer 1     | Pump Spacer 1     | 9/13/2018 | 13:21:50 | COM5 | 0.00 | 8.37  | 1.00    | Started pumping spacer and the truck kicked out. The wing on the bop was closed. Retested bop at 5960 psi.   |
| Event | 24 | Pump Spacer 1     | Pump Spacer 1     | 9/13/2018 | 13:32:10 | COM5 | 0.00 | 8.10  | 300.00  | Restarted the Tuned Spacer. Pumped 160 bbl 10.5#, 6.26 Yield, 40.7 gal/sks. Pumped at 4bpm and 480 psi. Musol and dual spacer were added on the fly.         |
| Event | 25 | Pump Spacer 2     | Pump Spacer 2     | 9/13/2018 | 14:10:50 | COM5 | 3.90 | 10.57 | 46.00   | Pumped 300 bbl Tergo Vis, 10.6#, 3.63 yield, 22.2 gal/sks. pumped at 8 bpm and 122 psi.  |
| Event | 26 | Other             | Other             | 9/13/2018 | 14:36:44 | COM5 | 1.30 | 9.75  | -7.00   | Shut down for water  |
| Event | 27 | Pump Cement       | Pump Cement       | 9/13/2018 | 14:50:18 | COM5 |      |       |         | Pumped 304 bbl Elasticem. 1005 sks, 14.4#, 1.7 yield, 7.32gal/sks. Pumped at 8bpm and 535 psi. Got spacer back at 235 bbl away.                              |
| Event | 28 | Check Weight      | Check Weight      | 9/13/2018 | 14:57:58 | COM5 | 8.20 | 14.42 | 456.00  | Verified weight with the pressurized scale   |
| Event | 29 | Check Weight      | Check Weight      | 9/13/2018 | 15:06:43 | COM5 |      |       |         | Verified weight with the pressurized scale   |
| Event | 30 | Check Weight      | Check Weight      | 9/13/2018 | 15:16:00 | COM5 |      |       |         | Verified weight with the pressurized scale   |
| Event | 31 | Shutdown          | Shutdown          | 9/13/2018 | 15:33:25 | COM5 |      |       |         | Shut down and washed up cement head and lines  |
| Event | 32 | Drop Top Plug     | Drop Top Plug     | 9/13/2018 | 15:43:36 | COM5 |      |       |         | Dropped plug witnessed by the company man  |
| Event | 33 | Pump Displacement | Pump Displacement | 9/13/2018 | 15:43:39 | COM5 | 0.00 | 7.35  | -20.00  | Pumped 3 bbls water ahead of the plug with MMCR  |
| Event | 34 | Pump Displacement | Pump Displacement | 9/13/2018 | 15:45:20 | COM5 |      |       |         | Pumped 217 bbls plus 2 water displacement. 1st 30bbls had MMCR and the balance had Biocide and cla-web. Pumped at 8-6 bpm and 2000 psi. Shut down at 219 bbl |
| Event | 35 | Rig Down Lines    | Rig Down Lines    | 9/13/2018 | 16:30:00 | USER | 2.90 | 8.14  | 2387.00 | Held a safety meeting before rigging down lines  |

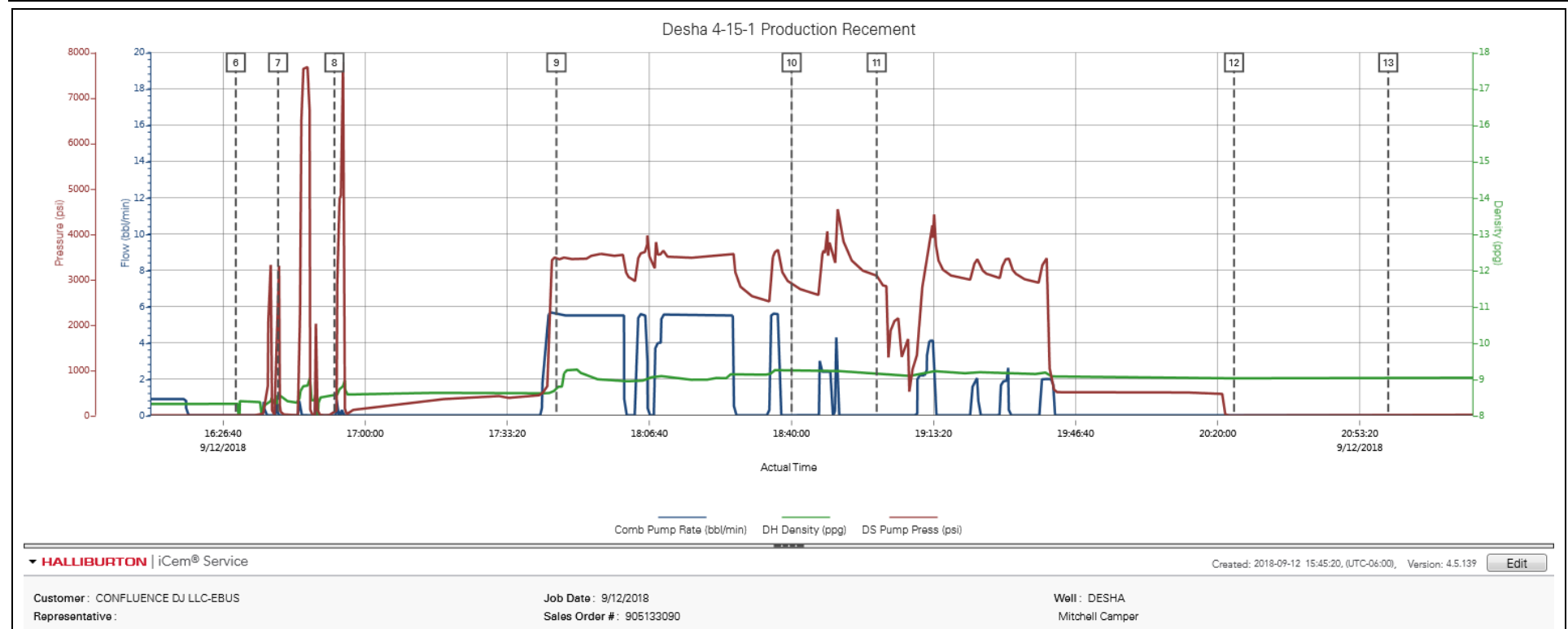
|       |    |                 |                 |           |          |      |  |
|-------|----|-----------------|-----------------|-----------|----------|------|--|
| Event | 36 | End Job         | End Job         | 9/13/2018 | 16:33:35 | COM5 |  |
| Event | 37 | Depart Location | Depart Location | 9/13/2018 | 17:30:00 | USER | Held a safety huddle before leaving location |

## 3.0 Attachments

### 3.1 Desha 4-15-1 Production – Job Chart with Events



## 3.2 Desha 4-15-1 Production – Pump Wireline



## 3.3 Desha 4-15-1 Production – Pump Cement

