

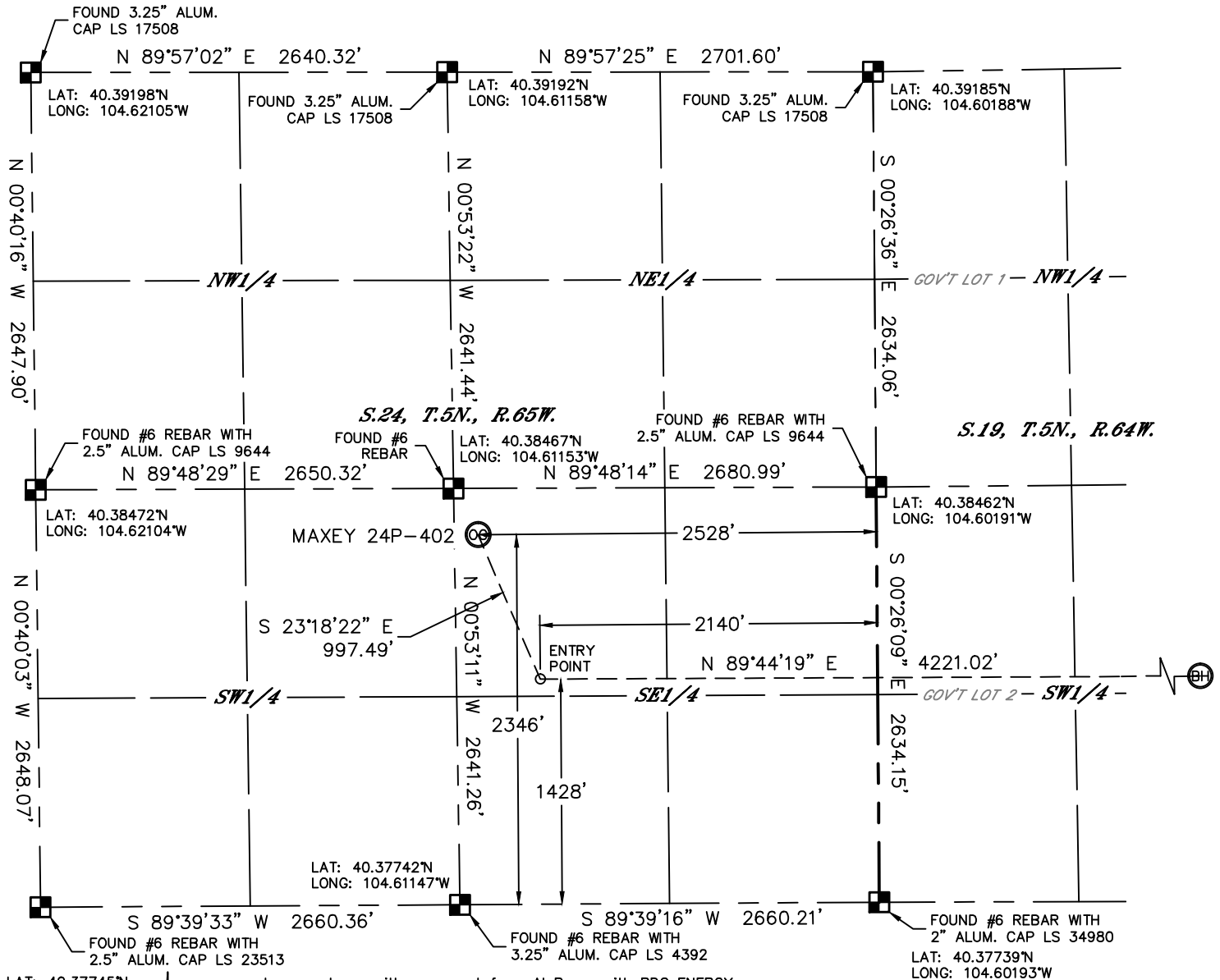


Lat40°, Inc. 1635 Foxtrail Drive, Suite 325 Loveland, CO 970-776-3321

WELL LOCATION CERTIFICATE

THIS MAP DOES NOT REPRESENT A BOUNDARY SURVEY

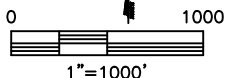
SECTION: 24
TOWNSHIP: 5N
RANGE: 65W



LAT: 40.37745N
LONG: 104.62102W

In accordance with a request from Al Bragg with PDC ENERGY
Lat40°, Inc. has determined the surface location of the MAXEY 24P-402 to be 2346' from the SOUTH line and 2528' from the EAST line as measured at right angles from the section lines of Section 24, Township 5 North, Range 65 West and the bottom hole to be 1428' from the SOUTH line and 2081' from the WEST line as measured at right angles from the section lines of Section 19, Township 5 North, Range 64 West of the Sixth Principal Meridian, County of Weld, State of Colorado.

I hereby state that this Well Location Certificate was prepared by me, or under my direct supervision, that the fieldwork was completed on 1/10/2013, for and on behalf of PDC ENERGY. That this is not a Land Survey Plat or an Improvement Survey Plat, and that it is not to be relied upon for establishment of fence, building, or other future improvement lines.



NOTE:

- 1) Bearings shown are Grid Bearings of the Colorado State Plane Coordinate System, North Zone, North American Datum 1983/2007. The lineal dimensions as contained herein are based upon the "U.S. Survey Foot."
- 2) Ground elevations are based on an observed GPS elevation (NAVD 1988 DATUM).
- 3) IMPROVEMENTS: See LOCATION DRAWING for all visible improvements within 400' of disturbed area.
- 4) SURFACE USE: CROPLAND
- 5) INSTRUMENT OPERATOR: BRIAN ROTTINGHAUS

SURFACE LOCATION

LAT: 40.38386N
LONG: 104.61098W
PDOP: 2.4
ELEV: 4637'
1/4, 1/4: NW1/4SE1/4
NEAREST PROPERTY LINE: 151' WEST

ENTRY POINT

LAT: 40.38133N
LONG: 104.60960W

BOTTOM HOLE

LAT: 40.38127N
LONG: 104.59445W

NOTE

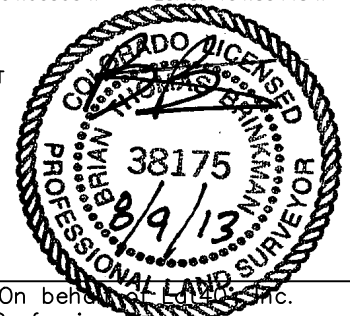
According to Colorado law, you must commence any legal action based upon any defect in this W.L.C. within three years after you discover such defect. In no event, may any action based upon any defect in this survey be commenced more than ten years after the date of the certificate shown hereon. (13-80-105 C.R.S.)

LEGEND

- = ALIQUOT MONUMENT AS DESCRIBED
- = CALCULATED POSITION

SHEET 1 OF 2

Brian T. Brinkman—On behalf of Lat40°, Inc.
Colorado Licensed Professional
Land Surveyor No. 38175
DATE: rev 8/9/2013
PROJECT#: 2013003



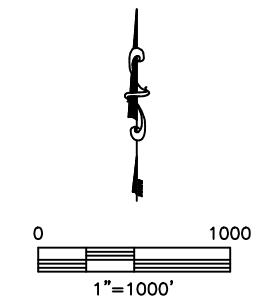
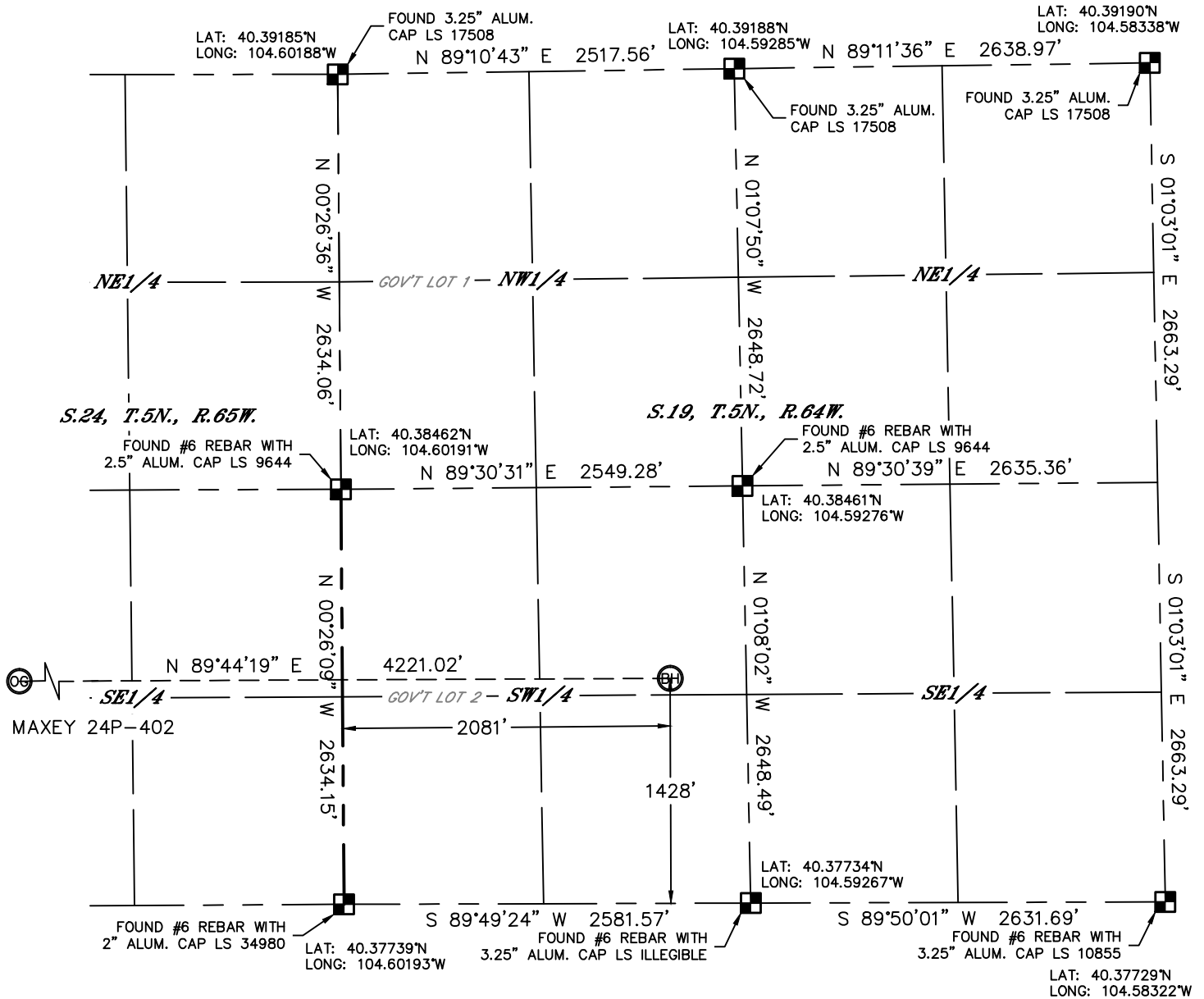


Lat40°, Inc. 1635 Foxtrail Drive, Suite 325 Loveland, CO 970-776-3321

WELL LOCATION CERTIFICATE

THIS MAP DOES NOT REPRESENT A BOUNDARY SURVEY

SECTION: 24
TOWNSHIP: 5N
RANGE: 65W



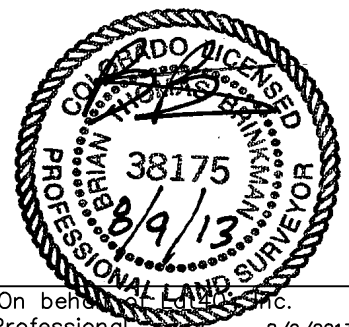
NOTE
According to Colorado law, you must commence any legal action based upon any defect in this W.L.C. within three years after you discover such defect. In no event, may any action based upon any defect in this survey be commenced more than ten years after the date of the certificate shown hereon. (13-80-105 C.R.S.)

LEGEND

- = ALIQUOT MONUMENT AS DESCRIBED
- = CALCULATED POSITION

SHEET 2 OF 2

Brian T. Brinkman—On behalf of Lat40°, Inc.
Colorado Licensed Professional
Land Surveyor No. 38175
DATE: rev 8/9/2013
PROJECT#: 2013003



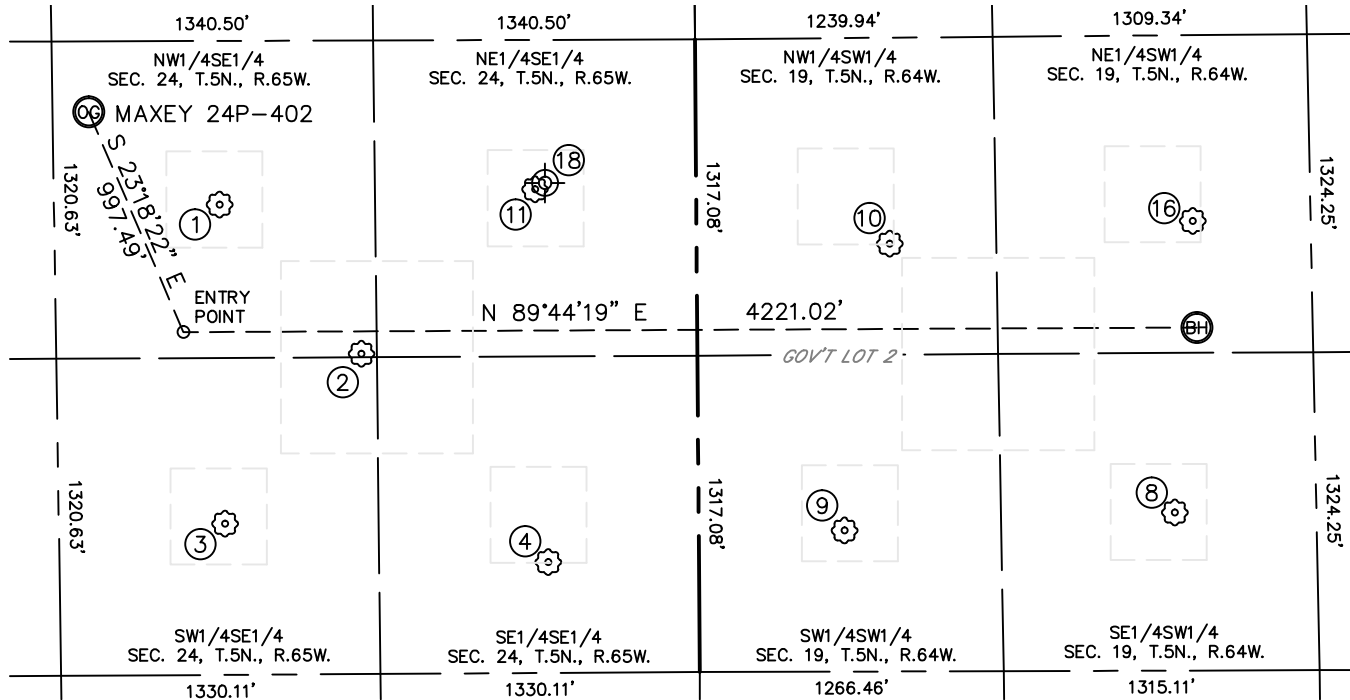


Lat40°, Inc. 1635 Foxtrail Drive, Suite 325 Loveland, CO 970-776-3321

SITE SKETCH

MAXEY 24P-402

SECTION: 24
TOWNSHIP: 5N
RANGE: 65W



①

MAXEY 33-24
NW1/4SE1/4
1958' FSL
1986' FEL
LAT-40.38278°N
LONG-104.60904°W
PDOP: 1.8
ELEV: 4636'

②

MAXEY 24D
NW1/4SE1/4
1333' FSL
1399' FEL
LAT-40.38106°N
LONG-104.60694°W
PDOP: 1.8
ELEV: 4636'

③

MAXEY 2
SW1/4SE1/4
629' FSL
1973' FEL
LAT-40.37914°N
LONG-104.60900°W
PDOP: 1.8
ELEV: 4635'

④

MAXEY 44-24
SE1/4SE1/4
461' FSL
628' FEL
LAT-40.37866°N
LONG-104.60418°W
PDOP: 1.8
ELEV: 4632'

⑧

EMILY 24-19
SE1/4SW1/4
658' FSL
1983' FWL
LAT-40.37916°N
LONG-104.59481°W
PDOP: 2.1
ELEV: 4629'

⑨

MAXEY HOFF 1
SW1/4SW1/4
(GOV'T LOT 2)
587' FSL
607' FWL
LAT-40.37899°N
LONG-104.59975°W
PDOP: 2.1
ELEV: 4631'

⑩

MAXEY HOFF 2
NW1/4SW1/4
(GOV'T LOT 2)
1781' FSL
804' FWL
LAT-40.38226°N
LONG-104.59903°W
PDOP: 2.0
ELEV: 4631'

⑪

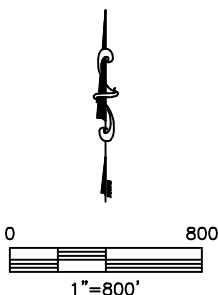
MAXEY 43-24
NE1/4SE1/4
2014' FSL
672' FEL
LAT-40.38292°N
LONG-104.60432°W
PDOP: 2.0
ELEV: 4635'

⑫

EMILY 1
NE1/4SW1/4
1871' FSL
2067' FWL
LAT-40.38248°N
LONG-104.59449°W
PDOP: 2.9
ELEV: 4628'

⑬

MAXEY 1
Plugged & Abandoned
NE1/4SE1/4
2040' FSL (COGCC)
630' FEL (COGCC)
LAT-40.38295°N (COGCC)
LONG-104.60417°W (COGCC)
PDOP: N/A
ELEV: 4633' (COGCC)



DATE: rev 8/9/2013
PROJECT#: 2013003