

# PETROLEUM DEVELOPMENT CORP Weld County CO

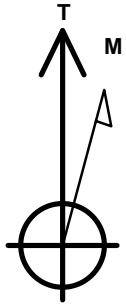
Well Name: **Maxey 24P-402**

Surface Location: Maxey 24O-HZ Pad Sec.24-T5N-R65W  
North American Datum 1983 , US State Plane 1983 , Colorado Northern Zone  
Ground Elevation: 4637.0

+N/-S	+E/-W	Northing	Easting	Latitude	Longitude	Slot
0.0	0.0	1383922.10	3247656.08	40.383860	-104.610980	
RKB - 15' WELL @ 4652.0ft (RKB - 15')						

## WELLBORE TARGET DETAILS

Name	TVD	+N/-S	+E/-W	Shape
BHL 1428'FSL & 2081'FWL, Sec.19	6912.0	-943.1	4604.7	Point



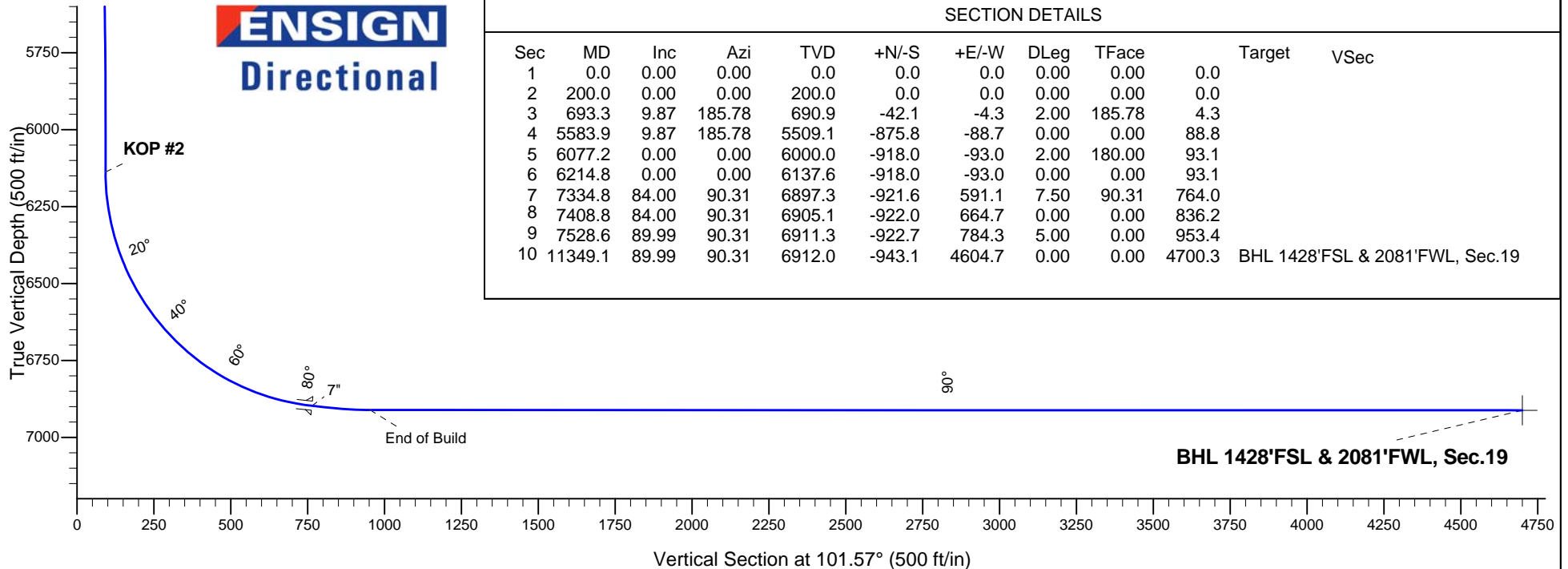
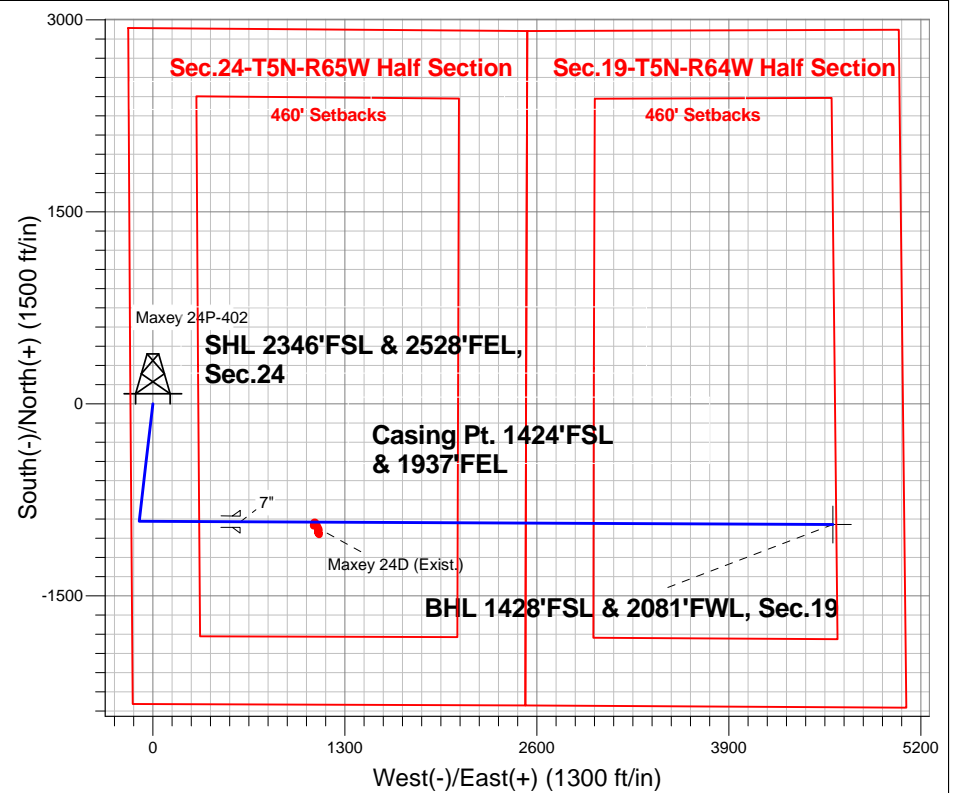
Azimuths to True North  
Magnetic North: 8.49°

Magnetic Field  
Strength: 52914.0snT  
Dip Angle: 66.99°  
Date: 8/9/2013  
Model: IGRF2010

## ANNOTATIONS

TVD	MD	Annotation
200.0	200.0	KOP #1
6137.6	6214.8	KOP #2
6911.3	7528.6	End of Build

Maxey 24O-HZ Pad Sec.24-T5N-R65W  
Maxey 24P-402  
Plan #2 (8-9-13)  
10:29, August 12 2013



## SECTION DETAILS

Sec	MD	Inc	Azi	TVD	+N/-S	+E/-W	DLeg	TFace	Target	VSec
1	0.0	0.00	0.00	0.0	0.0	0.0	0.00	0.00	0.0	
2	200.0	0.00	0.00	200.0	0.0	0.0	0.00	0.00	0.0	
3	693.3	9.87	185.78	690.9	-42.1	-4.3	2.00	185.78	4.3	
4	5583.9	9.87	185.78	5509.1	-875.8	-88.7	0.00	0.00	88.8	
5	6077.2	0.00	0.00	6000.0	-918.0	-93.0	2.00	180.00	93.1	
6	6214.8	0.00	0.00	6137.6	-918.0	-93.0	0.00	0.00	93.1	
7	7334.8	84.00	90.31	6897.3	-921.6	591.1	7.50	90.31	764.0	
8	7408.8	84.00	90.31	6905.1	-922.0	664.7	0.00	0.00	836.2	
9	7528.6	89.99	90.31	6911.3	-922.7	784.3	5.00	0.00	953.4	
10	11349.1	89.99	90.31	6912.0	-943.1	4604.7	0.00	0.00	4700.3	BHL 1428'FSL & 2081'FWL, Sec.19



# **PETROLEUM DEVELOPMENT CORP Weld County CO**

**SEC.24-T5N-R65W**

**Maxey 24O-HZ Pad Sec.24-T5N-R65W**

**Maxey 24P-402**

**Wellbore #1**

**Plan: Plan #2 (8-9-13)**

## **Standard Planning Report**

**12 August, 2013**

<b>Database:</b>	Landmark	<b>Local Co-ordinate Reference:</b>	Well Maxey 24P-402
<b>Company:</b>	PETROLEUM DEVELOPMENT CORP Weld County CO	<b>TVD Reference:</b>	WELL @ 4652.0ft (RKB - 15')
<b>Project:</b>	SEC.24-T5N-R65W	<b>MD Reference:</b>	WELL @ 4652.0ft (RKB - 15')
<b>Site:</b>	Maxey 24O-HZ Pad Sec.24-T5N-R65W	<b>North Reference:</b>	True
<b>Well:</b>	Maxey 24P-402	<b>Survey Calculation Method:</b>	Minimum Curvature
<b>Wellbore:</b>	Wellbore #1		
<b>Design:</b>	Plan #2 (8-9-13)		

<b>Project</b>	SEC.24-T5N-R65W, Weld County, Colorado		
<b>Map System:</b>	US State Plane 1983	<b>System Datum:</b>	Mean Sea Level
<b>Geo Datum:</b>	North American Datum 1983		Using Well Reference Point
<b>Map Zone:</b>	Colorado Northern Zone		Using geodetic scale factor

Site						Maxey 24O-HZ Pad Sec.24-T5N-R65W											
<b>Site Position:</b>						<b>Northing:</b>			1,383,922.11 ft			<b>Latitude:</b>			40.383860		
<b>From:</b>			Lat/Long			<b>Easting:</b>			3,247,656.08 ft			<b>Longitude:</b>			-104.610980		
<b>Position Uncertainty:</b>			0.0 ft			<b>Slot Radius:</b>			"			<b>Grid Convergence:</b>			0.57 °		

Well	Maxey 24P-402					
Well Position	+N-S	0.0 ft	Northing:	1,383,922.10 ft	Latitude:	40.383860
	+E-W	0.0 ft	Easting:	3,247,656.08 ft	Longitude:	-104.610980
Position Uncertainty		0.0 ft	Wellhead Elevation:	ft	Ground Level:	4,637.0 ft

<b>Wellbore</b>	Wellbore #1				
<b>Magnetics</b>	<b>Model Name</b>	<b>Sample Date</b>	<b>Declination (°)</b>	<b>Dip Angle (°)</b>	<b>Field Strength (nT)</b>
	IGRF2010	8/9/2013	8.49	66.99	52,914

<b>Design</b>	Plan #2 (8-9-13)			
<b>Audit Notes:</b>				
<b>Version:</b>	<b>Phase:</b>	PROTOTYPE	<b>Tie On Depth:</b>	0.0
<b>Vertical Section:</b>	<b>Depth From (TVD) (ft)</b>	<b>+N/-S (ft)</b>	<b>+E/-W (ft)</b>	<b>Direction (°)</b>
	0.0	0.0	0.0	101.57

<b>Plan Sections</b>										
Measured Depth (ft)	Inclination (°)	Azimuth (°)	Vertical Depth (ft)	+N/-S (ft)	+E/-W (ft)	Dogleg Rate (°/100ft)	Build Rate (°/100ft)	Turn Rate (°/100ft)	TFO (°)	Target
0.0	0.00	0.00	0.0	0.0	0.0	0.00	0.00	0.00	0.00	
200.0	0.00	0.00	200.0	0.0	0.0	0.00	0.00	0.00	0.00	
693.3	9.87	185.78	690.9	-42.1	-4.3	2.00	2.00	0.00	185.78	
5,583.9	9.87	185.78	5,509.1	-875.8	-88.7	0.00	0.00	0.00	0.00	
6,077.2	0.00	0.00	6,000.0	-918.0	-93.0	2.00	-2.00	0.00	180.00	
6,214.8	0.00	0.00	6,137.6	-918.0	-93.0	0.00	0.00	0.00	0.00	
7,334.8	84.00	90.31	6,897.3	-921.6	591.1	7.50	7.50	0.00	90.31	
7,408.8	84.00	90.31	6,905.1	-922.0	664.7	0.00	0.00	0.00	0.00	
7,528.6	89.99	90.31	6,911.3	-922.7	784.3	5.00	5.00	0.00	0.00	
11,349.1	89.99	90.31	6,912.0	-943.1	4,604.7	0.00	0.00	0.00	0.00	BHL 1428'FSL & 2C

<b>Database:</b>	Landmark	<b>Local Co-ordinate Reference:</b>	Well Maxey 24P-402
<b>Company:</b>	PETROLEUM DEVELOPMENT CORP Weld County CO	<b>TVD Reference:</b>	WELL @ 4652.0ft (RKB - 15')
<b>Project:</b>	SEC.24-T5N-R65W	<b>MD Reference:</b>	WELL @ 4652.0ft (RKB - 15')
<b>Site:</b>	Maxey 24O-HZ Pad Sec.24-T5N-R65W	<b>North Reference:</b>	True
<b>Well:</b>	Maxey 24P-402	<b>Survey Calculation Method:</b>	Minimum Curvature
<b>Wellbore:</b>	Wellbore #1		
<b>Design:</b>	Plan #2 (8-9-13)		

Planned Survey										
Measured Depth (ft)	Inclination (°)	Azimuth (°)	Vertical Depth (ft)	+N/-S (ft)	+E/-W (ft)	Vertical Section (ft)	Dogleg Rate (°/100ft)	Build Rate (°/100ft)	Turn Rate (°/100ft)	
0.0	0.00	0.00	0.0	0.0	0.0	0.0	0.00	0.00	0.00	
100.0	0.00	0.00	100.0	0.0	0.0	0.0	0.00	0.00	0.00	
200.0	0.00	0.00	200.0	0.0	0.0	0.0	0.00	0.00	0.00	
KOP #1										
300.0	2.00	185.78	300.0	-1.7	-0.2	0.2	2.00	2.00	0.00	
400.0	4.00	185.78	399.8	-6.9	-0.7	0.7	2.00	2.00	0.00	
500.0	6.00	185.78	499.5	-15.6	-1.6	1.6	2.00	2.00	0.00	
600.0	8.00	185.78	598.7	-27.7	-2.8	2.8	2.00	2.00	0.00	
693.3	9.87	185.78	690.9	-42.1	-4.3	4.3	2.00	2.00	0.00	
700.0	9.87	185.78	697.5	-43.3	-4.4	4.4	0.00	0.00	0.00	
800.0	9.87	185.78	796.0	-60.3	-6.1	6.1	0.00	0.00	0.00	
900.0	9.87	185.78	894.5	-77.4	-7.8	7.8	0.00	0.00	0.00	
1,000.0	9.87	185.78	993.0	-94.4	-9.6	9.6	0.00	0.00	0.00	
1,100.0	9.87	185.78	1,091.6	-111.5	-11.3	11.3	0.00	0.00	0.00	
1,200.0	9.87	185.78	1,190.1	-128.5	-13.0	13.0	0.00	0.00	0.00	
1,300.0	9.87	185.78	1,288.6	-145.6	-14.7	14.8	0.00	0.00	0.00	
1,400.0	9.87	185.78	1,387.1	-162.6	-16.5	16.5	0.00	0.00	0.00	
1,500.0	9.87	185.78	1,485.6	-179.7	-18.2	18.2	0.00	0.00	0.00	
1,600.0	9.87	185.78	1,584.2	-196.7	-19.9	19.9	0.00	0.00	0.00	
1,700.0	9.87	185.78	1,682.7	-213.8	-21.7	21.7	0.00	0.00	0.00	
1,800.0	9.87	185.78	1,781.2	-230.8	-23.4	23.4	0.00	0.00	0.00	
1,900.0	9.87	185.78	1,879.7	-247.9	-25.1	25.1	0.00	0.00	0.00	
2,000.0	9.87	185.78	1,978.2	-264.9	-26.8	26.9	0.00	0.00	0.00	
2,100.0	9.87	185.78	2,076.8	-281.9	-28.6	28.6	0.00	0.00	0.00	
2,200.0	9.87	185.78	2,175.3	-299.0	-30.3	30.3	0.00	0.00	0.00	
2,300.0	9.87	185.78	2,273.8	-316.0	-32.0	32.0	0.00	0.00	0.00	
2,400.0	9.87	185.78	2,372.3	-333.1	-33.7	33.8	0.00	0.00	0.00	
2,500.0	9.87	185.78	2,470.8	-350.1	-35.5	35.5	0.00	0.00	0.00	
2,600.0	9.87	185.78	2,569.4	-367.2	-37.2	37.2	0.00	0.00	0.00	
2,700.0	9.87	185.78	2,667.9	-384.2	-38.9	39.0	0.00	0.00	0.00	
2,800.0	9.87	185.78	2,766.4	-401.3	-40.7	40.7	0.00	0.00	0.00	
2,900.0	9.87	185.78	2,864.9	-418.3	-42.4	42.4	0.00	0.00	0.00	
3,000.0	9.87	185.78	2,963.5	-435.4	-44.1	44.1	0.00	0.00	0.00	
3,100.0	9.87	185.78	3,062.0	-452.4	-45.8	45.9	0.00	0.00	0.00	
3,200.0	9.87	185.78	3,160.5	-469.5	-47.6	47.6	0.00	0.00	0.00	
3,300.0	9.87	185.78	3,259.0	-486.5	-49.3	49.3	0.00	0.00	0.00	
3,400.0	9.87	185.78	3,357.5	-503.6	-51.0	51.1	0.00	0.00	0.00	
3,500.0	9.87	185.78	3,456.1	-520.6	-52.7	52.8	0.00	0.00	0.00	
3,600.0	9.87	185.78	3,554.6	-537.7	-54.5	54.5	0.00	0.00	0.00	
3,700.0	9.87	185.78	3,653.1	-554.7	-56.2	56.2	0.00	0.00	0.00	
3,800.0	9.87	185.78	3,751.6	-571.7	-57.9	58.0	0.00	0.00	0.00	
3,900.0	9.87	185.78	3,850.1	-588.8	-59.6	59.7	0.00	0.00	0.00	
4,000.0	9.87	185.78	3,948.7	-605.8	-61.4	61.4	0.00	0.00	0.00	
4,100.0	9.87	185.78	4,047.2	-622.9	-63.1	63.2	0.00	0.00	0.00	
4,200.0	9.87	185.78	4,145.7	-639.9	-64.8	64.9	0.00	0.00	0.00	
4,300.0	9.87	185.78	4,244.2	-657.0	-66.6	66.6	0.00	0.00	0.00	
4,400.0	9.87	185.78	4,342.8	-674.0	-68.3	68.3	0.00	0.00	0.00	
4,500.0	9.87	185.78	4,441.3	-691.1	-70.0	70.1	0.00	0.00	0.00	
4,600.0	9.87	185.78	4,539.8	-708.1	-71.7	71.8	0.00	0.00	0.00	
4,700.0	9.87	185.78	4,638.3	-725.2	-73.5	73.5	0.00	0.00	0.00	
4,800.0	9.87	185.78	4,736.8	-742.2	-75.2	75.3	0.00	0.00	0.00	
4,900.0	9.87	185.78	4,835.4	-759.3	-76.9	77.0	0.00	0.00	0.00	
5,000.0	9.87	185.78	4,933.9	-776.3	-78.6	78.7	0.00	0.00	0.00	

<b>Database:</b>	Landmark	<b>Local Co-ordinate Reference:</b>	Well Maxey 24P-402
<b>Company:</b>	PETROLEUM DEVELOPMENT CORP Weld County CO	<b>TVD Reference:</b>	WELL @ 4652.0ft (RKB - 15')
<b>Project:</b>	SEC.24-T5N-R65W	<b>MD Reference:</b>	WELL @ 4652.0ft (RKB - 15')
<b>Site:</b>	Maxey 24O-HZ Pad Sec.24-T5N-R65W	<b>North Reference:</b>	True
<b>Well:</b>	Maxey 24P-402	<b>Survey Calculation Method:</b>	Minimum Curvature
<b>Wellbore:</b>	Wellbore #1		
<b>Design:</b>	Plan #2 (8-9-13)		

Planned Survey									
Measured Depth (ft)	Inclination (°)	Azimuth (°)	Vertical Depth (ft)	+N-S (ft)	+E-W (ft)	Vertical Section (ft)	Dogleg Rate (°/100ft)	Build Rate (°/100ft)	Turn Rate (°/100ft)
5,100.0	9.87	185.78	5,032.4	-793.4	-80.4	80.4	0.00	0.00	0.00
5,200.0	9.87	185.78	5,130.9	-810.4	-82.1	82.2	0.00	0.00	0.00
5,300.0	9.87	185.78	5,229.4	-827.4	-83.8	83.9	0.00	0.00	0.00
5,400.0	9.87	185.78	5,328.0	-844.5	-85.6	85.6	0.00	0.00	0.00
5,500.0	9.87	185.78	5,426.5	-861.5	-87.3	87.4	0.00	0.00	0.00
5,583.9	9.87	185.78	5,509.1	-875.8	-88.7	88.8	0.00	0.00	0.00
5,600.0	9.54	185.78	5,525.0	-878.5	-89.0	89.1	2.00	-2.00	0.00
5,700.0	7.54	185.78	5,623.9	-893.3	-90.5	90.6	2.00	-2.00	0.00
5,800.0	5.54	185.78	5,723.2	-904.7	-91.6	91.7	2.00	-2.00	0.00
5,900.0	3.54	185.78	5,822.9	-912.5	-92.4	92.5	2.00	-2.00	0.00
6,000.0	1.54	185.78	5,922.8	-917.0	-92.9	93.0	2.00	-2.00	0.00
6,077.2	0.00	0.00	6,000.0	-918.0	-93.0	93.1	2.00	-2.00	0.00
6,100.0	0.00	0.00	6,022.8	-918.0	-93.0	93.1	0.00	0.00	0.00
6,200.0	0.00	0.00	6,122.8	-918.0	-93.0	93.1	0.00	0.00	0.00
6,214.8	0.00	0.00	6,137.6	-918.0	-93.0	93.1	0.00	0.00	0.00
<b>KOP #2</b>									
6,300.0	6.39	90.31	6,222.6	-918.0	-88.2	97.7	7.50	7.50	0.00
6,400.0	13.89	90.31	6,321.0	-918.1	-70.6	115.0	7.50	7.50	0.00
6,500.0	21.39	90.31	6,416.2	-918.3	-40.4	144.7	7.50	7.50	0.00
6,600.0	28.89	90.31	6,506.7	-918.5	2.1	186.3	7.50	7.50	0.00
6,700.0	36.39	90.31	6,590.8	-918.8	56.0	239.2	7.50	7.50	0.00
6,800.0	43.89	90.31	6,667.2	-919.1	120.4	302.4	7.50	7.50	0.00
6,900.0	51.39	90.31	6,734.5	-919.5	194.3	374.8	7.50	7.50	0.00
7,000.0	58.89	90.31	6,791.7	-920.0	276.3	455.2	7.50	7.50	0.00
7,100.0	66.39	90.31	6,837.6	-920.4	365.0	542.3	7.50	7.50	0.00
7,200.0	73.89	90.31	6,871.5	-920.9	459.0	634.5	7.50	7.50	0.00
7,300.0	81.39	90.31	6,892.9	-921.5	556.6	730.2	7.50	7.50	0.00
7,334.8	84.00	90.31	6,897.3	-921.7	591.1	764.0	7.49	7.49	0.00
<b>7"</b>									
7,400.0	84.00	90.31	6,904.1	-922.0	656.0	827.6	0.00	0.00	0.00
7,408.8	84.00	90.31	6,905.1	-922.0	664.7	836.2	0.00	0.00	0.00
7,500.0	88.56	90.31	6,911.0	-922.5	755.7	925.4	5.00	5.00	0.00
7,528.6	89.99	90.31	6,911.3	-922.7	784.3	953.5	4.99	4.99	0.00
<b>End of Build</b>									
7,600.0	89.99	90.31	6,911.3	-923.1	855.7	1,023.5	0.00	0.00	0.00
7,700.0	89.99	90.31	6,911.4	-923.6	955.7	1,121.6	0.00	0.00	0.00
7,800.0	89.99	90.31	6,911.4	-924.1	1,055.7	1,219.7	0.00	0.00	0.00
7,900.0	89.99	90.31	6,911.4	-924.7	1,155.7	1,317.7	0.00	0.00	0.00
8,000.0	89.99	90.31	6,911.4	-925.2	1,255.7	1,415.8	0.00	0.00	0.00
8,100.0	89.99	90.31	6,911.4	-925.7	1,355.7	1,513.9	0.00	0.00	0.00
8,200.0	89.99	90.31	6,911.5	-926.3	1,455.7	1,611.9	0.00	0.00	0.00
8,300.0	89.99	90.31	6,911.5	-926.8	1,555.7	1,710.0	0.00	0.00	0.00
8,400.0	89.99	90.31	6,911.5	-927.3	1,655.7	1,808.1	0.00	0.00	0.00
8,500.0	89.99	90.31	6,911.5	-927.9	1,755.7	1,906.2	0.00	0.00	0.00
8,600.0	89.99	90.31	6,911.5	-928.4	1,855.7	2,004.2	0.00	0.00	0.00
8,700.0	89.99	90.31	6,911.5	-928.9	1,955.7	2,102.3	0.00	0.00	0.00
8,800.0	89.99	90.31	6,911.6	-929.5	2,055.7	2,200.4	0.00	0.00	0.00
8,900.0	89.99	90.31	6,911.6	-930.0	2,155.7	2,298.4	0.00	0.00	0.00
9,000.0	89.99	90.31	6,911.6	-930.6	2,255.7	2,396.5	0.00	0.00	0.00
9,100.0	89.99	90.31	6,911.6	-931.1	2,355.7	2,494.6	0.00	0.00	0.00
9,200.0	89.99	90.31	6,911.6	-931.6	2,455.7	2,592.7	0.00	0.00	0.00
9,300.0	89.99	90.31	6,911.6	-932.2	2,555.7	2,690.7	0.00	0.00	0.00
9,400.0	89.99	90.31	6,911.7	-932.7	2,655.7	2,788.8	0.00	0.00	0.00

<b>Database:</b>	Landmark	<b>Local Co-ordinate Reference:</b>	Well Maxey 24P-402
<b>Company:</b>	PETROLEUM DEVELOPMENT CORP Weld County CO	<b>TVD Reference:</b>	WELL @ 4652.0ft (RKB - 15')
<b>Project:</b>	SEC.24-T5N-R65W	<b>MD Reference:</b>	WELL @ 4652.0ft (RKB - 15')
<b>Site:</b>	Maxey 24O-HZ Pad Sec.24-T5N-R65W	<b>North Reference:</b>	True
<b>Well:</b>	Maxey 24P-402	<b>Survey Calculation Method:</b>	Minimum Curvature
<b>Wellbore:</b>	Wellbore #1		
<b>Design:</b>	Plan #2 (8-9-13)		

#### Planned Survey

Measured Depth (ft)	Inclination (°)	Azimuth (°)	Vertical Depth (ft)	+N/-S (ft)	+E/-W (ft)	Vertical Section (ft)	Dogleg Rate (°/100ft)	Build Rate (°/100ft)	Turn Rate (°/100ft)
9,500.0	89.99	90.31	6,911.7	-933.2	2,755.7	2,886.9	0.00	0.00	0.00
9,600.0	89.99	90.31	6,911.7	-933.8	2,855.7	2,985.0	0.00	0.00	0.00
9,700.0	89.99	90.31	6,911.7	-934.3	2,955.7	3,083.0	0.00	0.00	0.00
9,800.0	89.99	90.31	6,911.7	-934.8	3,055.7	3,181.1	0.00	0.00	0.00
9,900.0	89.99	90.31	6,911.7	-935.4	3,155.7	3,279.2	0.00	0.00	0.00
10,000.0	89.99	90.31	6,911.8	-935.9	3,255.7	3,377.2	0.00	0.00	0.00
10,100.0	89.99	90.31	6,911.8	-936.4	3,355.7	3,475.3	0.00	0.00	0.00
10,200.0	89.99	90.31	6,911.8	-937.0	3,455.7	3,573.4	0.00	0.00	0.00
10,300.0	89.99	90.31	6,911.8	-937.5	3,555.7	3,671.5	0.00	0.00	0.00
10,400.0	89.99	90.31	6,911.8	-938.0	3,655.7	3,769.5	0.00	0.00	0.00
10,500.0	89.99	90.31	6,911.9	-938.6	3,755.7	3,867.6	0.00	0.00	0.00
10,600.0	89.99	90.31	6,911.9	-939.1	3,855.7	3,965.7	0.00	0.00	0.00
10,700.0	89.99	90.31	6,911.9	-939.6	3,955.7	4,063.7	0.00	0.00	0.00
10,800.0	89.99	90.31	6,911.9	-940.2	4,055.7	4,161.8	0.00	0.00	0.00
10,900.0	89.99	90.31	6,911.9	-940.7	4,155.7	4,259.9	0.00	0.00	0.00
11,000.0	89.99	90.31	6,911.9	-941.2	4,255.7	4,358.0	0.00	0.00	0.00
11,100.0	89.99	90.31	6,912.0	-941.8	4,355.6	4,456.0	0.00	0.00	0.00
11,200.0	89.99	90.31	6,912.0	-942.3	4,455.6	4,554.1	0.00	0.00	0.00
11,300.0	89.99	90.31	6,912.0	-942.9	4,555.6	4,652.2	0.00	0.00	0.00
11,349.1	89.99	90.31	6,912.0	-943.1	4,604.7	4,700.3	0.00	0.00	0.00
BHL 1428'FSL & 2081'FWL, Sec.19									

#### Casing Points

Measured Depth (ft)	Vertical Depth (ft)	Name	Casing Diameter (")	Hole Diameter (")
7,334.8	6,897.3	7"	7	7-1/2

#### Plan Annotations

Measured Depth (ft)	Vertical Depth (ft)	Local Coordinates		Comment
		+N/-S (ft)	+E/-W (ft)	
200.0	200.0	0.0	0.0	KOP #1
6,214.8	6,137.6	-918.0	-93.0	KOP #2
7,528.6	6,911.3	-922.7	784.3	End of Build



# **PETROLEUM DEVELOPMENT CORP Weld County CO**

**SEC.24-T5N-R65W**

**Maxey 24O-HZ Pad Sec.24-T5N-R65W**

**Maxey 24P-402**

**Wellbore #1**

**Plan #2 (8-9-13)**

## **Anticollision Report**

**12 August, 2013**



<b>Company:</b>	PETROLEUM DEVELOPMENT CORP Weld County CO	<b>Local Co-ordinate Reference:</b>	Well Maxey 24P-402
<b>Project:</b>	SEC.24-T5N-R65W	<b>TVD Reference:</b>	WELL @ 4652.0ft (RKB - 15')
<b>Reference Site:</b>	Maxey 24O-HZ Pad Sec.24-T5N-R65W	<b>MD Reference:</b>	WELL @ 4652.0ft (RKB - 15')
<b>Site Error:</b>	0.0ft	<b>North Reference:</b>	True
<b>Reference Well:</b>	Maxey 24P-402	<b>Survey Calculation Method:</b>	Minimum Curvature
<b>Well Error:</b>	0.0ft	<b>Output errors are at</b>	2.00 sigma
<b>Reference Wellbore</b>	Wellbore #1	<b>Database:</b>	Landmark
<b>Reference Design:</b>	Plan #2 (8-9-13)	<b>Offset TVD Reference:</b>	Offset Datum

<b>Reference</b>	Plan #2 (8-9-13)
<b>Filter type:</b>	NO GLOBAL FILTER: Using user defined selection & filtering criteria
<b>Interpolation Method:</b>	MD Interval 100.0ft
<b>Depth Range:</b>	Unlimited
<b>Results Limited by:</b>	Maximum center-center distance of 1,000.0ft
<b>Warning Levels Evaluated at:</b>	2.00 Sigma
<b>Error Model:</b>	ISCWSA
<b>Scan Method:</b>	Closest Approach 3D
<b>Error Surface:</b>	Elliptical Conic

Survey Tool Program		Date	8/9/2013		
From (ft)	To (ft)	Survey (Wellbore)	Tool Name	Description	
0.0	11,349.1	Plan #2 (8-9-13) (Wellbore #1)	MWD	MWD - Standard	

Summary						
Site Name	Reference Measured Depth (ft)	Offset Measured Depth (ft)	Distance Between Centres (ft)	Between Ellipses (ft)	Separation Factor	Warning
Offset Well - Wellbore - Design						
Maxey 24O-HZ Pad Sec.24-T5N-R65W						
Maxey 24O-232 - Wellbore #1 - Plan #2 (8-9-13)	200.0	199.0	61.3	60.6	91.198	CC
Maxey 24O-232 - Wellbore #1 - Plan #2 (8-9-13)	300.0	299.0	61.5	60.4	56.016	ES
Maxey 24O-232 - Wellbore #1 - Plan #2 (8-9-13)	11,349.1	11,137.4	656.8	409.2	2.653	SF
Maxey 24O-402 - Wellbore #1 - Plan #2 (8-9-13)	200.0	199.0	89.2	88.6	132.762	CC
Maxey 24O-402 - Wellbore #1 - Plan #2 (8-9-13)	300.0	299.0	89.3	88.2	81.397	ES
Maxey 24O-402 - Wellbore #1 - Plan #2 (8-9-13)	11,349.1	11,295.6	976.3	718.3	3.784	SF
Maxey 24P-312 - Wellbore #1 - Plan #2 (8-9-13)	200.0	200.0	30.6	30.0	45.447	CC
Maxey 24P-312 - Wellbore #1 - Plan #2 (8-9-13)	300.0	300.0	30.9	29.8	28.063	ES
Maxey 24P-312 - Wellbore #1 - Plan #2 (8-9-13)	11,349.1	11,243.6	319.4	77.6	1.321	Level 3, SF
Maxey 24Q-HZ Pad Sec.24-T5N-R65W						
Maxey 24D (Exist.) - Wellbore #1 - Wellbore #1	7,834.0	6,800.0	101.6	80.7	4.847	CC, ES, SF

<b>Offset Design</b> Maxey 24O-HZ Pad Sec.24-T5N-R65W - Maxey 24O-232 - Wellbore #1 - Plan #2 (8-9-13)												
Survey Program: 0-MWD												
<b>Reference</b>	<b>Offset</b>	<b>Semi Major Axis</b>		<b>Distance</b>		<b>Minimum Separation</b>		<b>Warning</b>				
<b>Measured Depth (ft)</b>	<b>Vertical Depth (ft)</b>	<b>Measured Depth (ft)</b>	<b>Vertical Depth (ft)</b>	<b>Reference (ft)</b>	<b>Offset (ft)</b>	<b>Highside Toolface (°)</b>	<b>Offset Wellbore Centre +N/-S (ft)</b>	<b>+E/-W (ft)</b>	<b>Between Centres (ft)</b>	<b>Between Ellipses (ft)</b>	<b>Minimum Separation (ft)</b>	<b>Separation Factor</b>
0.0	0.0	0.0	0.0	0.0	0.0	90.00	0.0	61.3	61.3			
100.0	100.0	99.0	99.0	0.1	0.1	90.00	0.0	61.3	61.3	61.1	0.22	274.049
200.0	200.0	199.0	199.0	0.3	0.3	90.00	0.0	61.3	61.3	60.6	0.67	91.198 CC
300.0	300.0	299.0	299.0	0.5	0.6	-97.40	0.0	61.3	61.5	60.4	1.10	56.016 ES
400.0	399.8	398.8	398.8	0.8	0.8	-102.15	0.0	61.3	62.4	60.9	1.53	40.784
500.0	499.5	498.5	498.5	1.0	1.0	-109.63	0.0	61.3	64.8	62.8	2.00	32.455
600.0	598.7	597.7	597.7	1.3	1.2	-118.95	0.0	61.3	69.8	67.4	2.49	28.034
700.0	697.5	696.5	696.5	1.6	1.5	-128.76	0.0	61.3	78.7	75.7	3.00	26.217
800.0	796.0	795.0	795.0	2.0	1.7	-137.20	0.0	61.3	90.5	87.0	3.49	25.888
900.0	894.5	893.5	893.5	2.4	1.9	-143.60	0.0	61.3	103.8	99.8	3.97	26.121
1,000.0	993.0	992.0	992.0	2.7	2.1	-148.52	0.0	61.3	118.1	113.6	4.44	26.583
1,100.0	1,091.6	1,090.6	1,090.6	3.1	2.3	-152.37	0.0	61.3	133.0	128.1	4.90	27.121
1,200.0	1,190.1	1,189.1	1,189.1	3.5	2.6	-155.43	0.0	61.3	148.5	143.1	5.37	27.664
1,300.0	1,288.6	1,287.6	1,287.6	3.9	2.8	-157.91	0.0	61.3	164.2	158.4	5.83	28.181
1,400.0	1,387.1	1,386.1	1,386.1	4.3	3.0	-159.95	0.0	61.3	180.3	174.0	6.29	28.660

CC - Min centre to center distance or convergent point, SF - min separation factor, ES - min ellipse separation

<b>Company:</b>	PETROLEUM DEVELOPMENT CORP Weld County CO	<b>Local Co-ordinate Reference:</b>	Well Maxey 24P-402
<b>Project:</b>	SEC.24-T5N-R65W	<b>TVD Reference:</b>	WELL @ 4652.0ft (RKB - 15')
<b>Reference Site:</b>	Maxey 24O-HZ Pad Sec.24-T5N-R65W	<b>MD Reference:</b>	WELL @ 4652.0ft (RKB - 15')
<b>Site Error:</b>	0.0ft	<b>North Reference:</b>	True
<b>Reference Well:</b>	Maxey 24P-402	<b>Survey Calculation Method:</b>	Minimum Curvature
<b>Well Error:</b>	0.0ft	<b>Output errors are at</b>	2.00 sigma
<b>Reference Wellbore</b>	Wellbore #1	<b>Database:</b>	Landmark
<b>Reference Design:</b>	Plan #2 (8-9-13)	<b>Offset TVD Reference:</b>	Offset Datum

Offset Design Maxey 24O-HZ Pad Sec.24-T5N-R65W - Maxey 24O-232 - Wellbore #1 - Plan #2 (8-9-13)													Offset Site Error:	0.0 ft
Survey Program: 0-MWD													Offset Well Error:	0.0 ft
Measured Depth (ft)	Vertical Depth (ft)	Measured Depth (ft)	Vertical Depth (ft)	Reference	Offset	Semi Major Axis	Highside Toolface (°)	Offset Wellbore Centre +N/-S (ft)	+E/-W (ft)	Between Centres (ft)	Between Ellipses (ft)	Minimum Separation (ft)	Separation Factor	Warning
1,500.0	1,485.6	1,484.6	1,484.6	4.7	3.2	-161.67		0.0	61.3	196.5	189.7	6.75	29.100	
1,600.0	1,584.2	1,589.8	1,589.7	5.1	3.4	-163.25		-1.2	60.6	211.5	204.3	7.20	29.377	
1,700.0	1,682.7	1,697.0	1,696.9	5.5	3.6	-164.77		-5.9	58.0	223.1	215.5	7.62	29.261	
1,800.0	1,781.2	1,805.0	1,804.4	5.9	3.8	-166.29		-14.2	53.5	231.1	223.0	8.05	28.693	
1,900.0	1,879.7	1,905.4	1,904.2	6.3	4.0	-167.71		-23.8	48.2	237.1	228.6	8.48	27.954	
2,000.0	1,978.2	2,005.0	2,003.3	6.7	4.2	-169.05		-33.4	43.0	243.2	234.3	8.91	27.282	
2,100.0	2,076.8	2,104.7	2,102.3	7.1	4.5	-170.32		-42.9	37.7	249.4	240.1	9.35	26.670	
2,200.0	2,175.3	2,204.4	2,201.4	7.5	4.7	-171.53		-52.5	32.5	255.8	246.0	9.80	26.109	
2,300.0	2,273.8	2,304.0	2,300.4	7.9	5.0	-172.68		-62.1	27.2	262.3	252.0	10.25	25.595	
2,400.0	2,372.3	2,403.7	2,399.5	8.3	5.2	-173.77		-71.6	22.0	268.8	258.1	10.70	25.120	
2,500.0	2,470.8	2,503.3	2,498.6	8.7	5.5	-174.81		-81.2	16.8	275.5	264.3	11.16	24.681	
2,600.0	2,569.4	2,603.0	2,597.6	9.1	5.7	-175.80		-90.7	11.5	282.2	270.6	11.63	24.273	
2,700.0	2,667.9	2,702.6	2,696.7	9.5	6.0	-176.75		-100.3	6.3	289.1	277.0	12.10	23.893	
2,800.0	2,766.4	2,802.3	2,795.7	9.9	6.3	-177.65		-109.8	1.0	296.0	283.4	12.57	23.539	
2,900.0	2,864.9	2,901.9	2,894.8	10.3	6.5	-178.51		-119.4	-4.2	302.9	289.9	13.05	23.208	
3,000.0	2,963.5	3,001.6	2,993.8	10.7	6.8	-179.33		-128.9	-9.4	310.0	296.4	13.54	22.898	
3,100.0	3,062.0	3,101.3	3,092.9	11.1	7.1	179.88		-138.5	-14.7	317.1	303.1	14.03	22.606	
3,200.0	3,160.5	3,200.9	3,192.0	11.5	7.4	179.13		-148.0	-19.9	324.2	309.7	14.52	22.332	
3,300.0	3,259.0	3,300.6	3,291.0	11.9	7.7	178.41		-157.6	-25.2	331.4	316.4	15.02	22.074	
3,400.0	3,357.5	3,400.2	3,390.1	12.3	7.9	177.72		-167.2	-30.4	338.7	323.2	15.52	21.829	
3,500.0	3,456.1	3,499.9	3,489.1	12.7	8.2	177.07		-176.7	-35.7	346.0	330.0	16.02	21.599	
3,600.0	3,554.6	3,599.5	3,588.2	13.1	8.5	176.43		-186.3	-40.9	353.3	336.8	16.53	21.380	
3,700.0	3,653.1	3,699.2	3,687.3	13.5	8.8	175.83		-195.8	-46.1	360.7	343.7	17.04	21.173	
3,800.0	3,751.6	3,798.8	3,786.3	13.9	9.1	175.25		-205.4	-51.4	368.2	350.6	17.55	20.976	
3,900.0	3,850.1	3,898.5	3,885.4	14.3	9.4	174.69		-214.9	-56.6	375.6	357.6	18.07	20.790	
4,000.0	3,948.7	3,998.2	3,984.4	14.7	9.7	174.15		-224.5	-61.9	383.1	364.5	18.59	20.612	
4,100.0	4,047.2	4,097.8	4,083.5	15.1	10.0	173.64		-234.0	-67.1	390.6	371.5	19.11	20.443	
4,200.0	4,145.7	4,197.5	4,182.5	15.5	10.3	173.14		-243.6	-72.4	398.2	378.6	19.63	20.281	
4,300.0	4,244.2	4,297.1	4,281.6	15.9	10.6	172.66		-253.2	-77.6	405.8	385.6	20.16	20.127	
4,400.0	4,342.8	4,396.8	4,380.7	16.2	10.9	172.20		-262.7	-82.8	413.4	392.7	20.69	19.980	
4,500.0	4,441.3	4,496.4	4,479.7	16.6	11.2	171.76		-272.3	-88.1	421.1	399.8	21.22	19.840	
4,600.0	4,539.8	4,585.6	4,568.4	17.0	11.4	171.46		-279.8	-92.2	429.8	408.1	21.70	19.804	
4,700.0	4,638.3	4,673.5	4,656.2	17.4	11.6	171.36		-284.8	-95.0	441.3	419.1	22.15	19.920	
4,800.0	4,736.8	4,760.9	4,743.5	17.8	11.8	171.44		-287.5	-96.4	455.3	432.7	22.58	20.165	
4,900.0	4,835.4	4,851.7	4,834.4	18.2	11.9	171.69		-288.0	-96.7	471.7	448.7	23.00	20.511	
5,000.0	4,933.9	4,950.3	4,932.9	18.6	12.1	171.98		-288.0	-96.7	488.6	465.2	23.42	20.861	
5,100.0	5,032.4	5,048.8	5,031.4	19.0	12.3	172.25		-288.0	-96.7	505.6	481.8	23.85	21.198	
5,200.0	5,130.9	5,147.3	5,129.9	19.4	12.4	172.50		-288.0	-96.7	522.6	498.3	24.28	21.522	
5,300.0	5,229.4	5,245.8	5,228.4	19.8	12.6	172.74		-288.0	-96.7	539.6	514.9	24.71	21.833	
5,400.0	5,328.0	5,344.3	5,327.0	20.2	12.8	172.96		-288.0	-96.7	556.6	531.5	25.15	22.132	
5,500.0	5,426.5	5,442.9	5,425.5	20.6	12.9	173.17		-288.0	-96.7	573.6	548.0	25.59	22.419	
5,600.0	5,525.0	5,541.4	5,524.0	21.0	13.1	173.38		-288.0	-96.7	590.6	564.6	26.03	22.692	
5,700.0	5,623.9	5,640.3	5,622.9	21.3	13.3	173.57		-288.0	-96.7	605.4	578.9	26.44	22.898	
5,800.0	5,723.2	5,739.6	5,722.2	21.5	13.5	173.72		-288.0	-96.7	616.7	589.9	26.82	22.995	
5,900.0	5,822.9	5,839.3	5,821.9	21.7	13.7	173.81		-288.0	-96.7	624.6	597.4	27.17	22.990	
6,000.0	5,922.8	5,939.2	5,921.8	21.8	13.8	173.87		-288.0	-96.7	629.0	601.5	27.48	22.887	
6,100.0	6,022.8	6,039.5	6,022.1	22.0	14.0	-0.23		-288.0	-95.5	630.0	594.4	35.59	17.700	
6,161.6	6,084.4	6,101.1	6,083.4	22.0	14.1	0.30		-288.0	-89.7	630.0	594.2	35.79	17.602	
6,200.0	6,122.8	6,138.9	6,120.7	22.1	14.2	0.85		-288.1	-83.6	630.0	594.1	35.92	17.541	
6,300.0	6,222.6	6,234.8	6,213.7	22.2	14.3	-87.68		-288.2	-60.1	630.5	602.3	28.25	22.318	
6,400.0	6,321.0	6,328.5	6,300.9	22.3	14.4	-85.95		-288.4	-26.0	631.6	603.1	28.46	22.192	

CC - Min centre to center distance or convergent point, SF - min separation factor, ES - min ellipse separation

<b>Company:</b>	PETROLEUM DEVELOPMENT CORP Weld County CO	<b>Local Co-ordinate Reference:</b>	Well Maxey 24P-402
<b>Project:</b>	SEC.24-T5N-R65W	<b>TVD Reference:</b>	WELL @ 4652.0ft (RKB - 15')
<b>Reference Site:</b>	Maxey 24O-HZ Pad Sec.24-T5N-R65W	<b>MD Reference:</b>	WELL @ 4652.0ft (RKB - 15')
<b>Site Error:</b>	0.0ft	<b>North Reference:</b>	True
<b>Reference Well:</b>	Maxey 24P-402	<b>Survey Calculation Method:</b>	Minimum Curvature
<b>Well Error:</b>	0.0ft	<b>Output errors are at</b>	2.00 sigma
<b>Reference Wellbore</b>	Wellbore #1	<b>Database:</b>	Landmark
<b>Reference Design:</b>	Plan #2 (8-9-13)	<b>Offset TVD Reference:</b>	Offset Datum

Offset Design Maxey 24O-HZ Pad Sec.24-T5N-R65W - Maxey 24O-232 - Wellbore #1 - Plan #2 (8-9-13)												Offset Site Error:	0.0 ft
Survey Program: 0-MWD												Offset Well Error:	0.0 ft
Reference	Offset	Semi Major Axis		Distance		Warning							
Measured Depth (ft)	Vertical Depth (ft)	Measured Depth (ft)	Vertical Depth (ft)	Reference (ft)	Offset (ft)	Highside Toolface (°)	Offset Wellbore Centre +N/-S (ft)	+E/-W (ft)	Between Centres (ft)	Between Ellipses (ft)	Minimum Separation (ft)	Separation Factor	
6,500.0	6,416.2	6,420.2	6,381.6	22.4	14.4	-84.30	-288.6	17.4	633.2	604.5	28.73	22.039	
6,600.0	6,506.7	6,510.2	6,455.1	22.5	14.5	-82.75	-288.9	69.1	635.2	606.1	29.13	21.807	
6,700.0	6,590.8	6,600.0	6,522.0	22.6	14.6	-81.31	-289.2	128.9	637.4	607.7	29.73	21.438	
6,800.0	6,667.2	6,685.6	6,578.8	22.7	14.9	-80.06	-289.5	193.0	639.8	609.1	30.62	20.890	
6,900.0	6,734.5	6,771.6	6,628.3	22.9	15.6	-78.94	-289.9	263.2	642.1	610.2	31.88	20.138	
7,000.0	6,791.7	6,856.6	6,669.1	23.2	16.6	-77.99	-290.3	337.7	644.2	610.7	33.55	19.200	
7,100.0	6,837.6	6,940.9	6,701.2	23.7	17.9	-77.22	-290.7	415.6	646.1	610.4	35.68	18.110	
7,200.0	6,871.5	7,024.6	6,724.4	24.4	19.3	-76.64	-291.1	495.9	647.6	609.4	38.23	16.939	
7,300.0	6,892.9	7,107.9	6,738.6	25.4	20.9	-76.24	-291.6	578.0	648.6	607.5	41.16	15.757	
7,400.0	6,904.1	7,190.8	6,743.8	26.8	22.6	-75.87	-292.0	660.7	649.8	605.3	44.58	14.576	
7,500.0	6,911.0	7,288.4	6,743.5	28.4	24.7	-75.20	-292.5	758.3	651.6	603.3	48.36	13.475	
7,600.0	6,911.3	7,388.4	6,743.0	30.3	27.0	-75.13	-293.0	858.3	651.9	599.2	52.66	12.378	
7,700.0	6,911.4	7,488.4	6,742.6	32.4	29.4	-75.09	-293.6	958.3	652.0	594.8	57.22	11.394	
7,800.0	6,911.4	7,588.4	6,742.1	34.6	31.8	-75.05	-294.1	1,058.3	652.1	590.2	61.92	10.532	
7,900.0	6,911.4	7,688.4	6,741.7	36.9	34.4	-75.01	-294.6	1,158.3	652.2	585.5	66.73	9.775	
8,000.0	6,911.4	7,788.4	6,741.2	39.3	36.9	-74.97	-295.2	1,258.3	652.4	580.8	71.62	9.109	
8,100.0	6,911.4	7,888.4	6,740.7	41.7	39.5	-74.93	-295.7	1,358.3	652.5	575.9	76.59	8.520	
8,200.0	6,911.5	7,988.4	6,740.3	44.2	42.1	-74.89	-296.2	1,458.2	652.6	571.0	81.61	7.997	
8,300.0	6,911.5	8,088.4	6,739.8	46.8	44.7	-74.85	-296.7	1,558.2	652.8	566.1	86.68	7.531	
8,400.0	6,911.5	8,188.4	6,739.4	49.3	47.4	-74.81	-297.3	1,658.2	652.9	561.1	91.79	7.113	
8,500.0	6,911.5	8,288.4	6,738.9	51.9	50.1	-74.77	-297.8	1,758.2	653.0	556.1	96.93	6.737	
8,600.0	6,911.5	8,388.4	6,738.5	54.5	52.7	-74.73	-298.3	1,858.2	653.2	551.1	102.10	6.397	
8,700.0	6,911.5	8,488.4	6,738.0	57.1	55.4	-74.69	-298.9	1,958.2	653.3	546.0	107.29	6.089	
8,800.0	6,911.6	8,588.4	6,737.6	59.8	58.1	-74.65	-299.4	2,058.2	653.4	540.9	112.50	5.808	
8,900.0	6,911.6	8,688.4	6,737.1	62.5	60.9	-74.61	-299.9	2,158.2	653.5	535.8	117.73	5.551	
9,000.0	6,911.6	8,788.4	6,736.7	65.1	63.6	-74.57	-300.4	2,258.2	653.7	530.7	122.97	5.316	
9,100.0	6,911.6	8,888.4	6,736.2	67.8	66.3	-74.53	-301.0	2,358.2	653.8	525.6	128.22	5.099	
9,200.0	6,911.6	8,988.3	6,735.8	70.5	69.1	-74.49	-301.5	2,458.2	653.9	520.5	133.48	4.899	
9,300.0	6,911.6	9,088.3	6,735.3	73.2	71.8	-74.45	-302.0	2,558.2	654.1	515.3	138.76	4.714	
9,400.0	6,911.7	9,188.3	6,734.8	75.9	74.6	-74.41	-302.6	2,658.2	654.2	510.2	144.04	4.542	
9,500.0	6,911.7	9,288.3	6,734.4	78.6	77.3	-74.37	-303.1	2,758.2	654.3	505.0	149.33	4.382	
9,600.0	6,911.7	9,388.3	6,733.9	81.4	80.1	-74.33	-303.6	2,858.2	654.5	499.8	154.62	4.233	
9,700.0	6,911.7	9,488.3	6,733.5	84.1	82.8	-74.29	-304.1	2,958.2	654.6	494.7	159.92	4.093	
9,800.0	6,911.7	9,588.3	6,733.0	86.8	85.6	-74.25	-304.7	3,058.2	654.7	489.5	165.22	3.963	
9,900.0	6,911.7	9,688.3	6,732.6	89.6	88.4	-74.21	-305.2	3,158.2	654.9	484.3	170.53	3.840	
10,000.0	6,911.8	9,788.3	6,732.1	92.3	91.1	-74.17	-305.7	3,258.2	655.0	479.2	175.84	3.725	
10,100.0	6,911.8	9,888.3	6,731.7	95.1	93.9	-74.13	-306.3	3,358.2	655.1	474.0	181.15	3.616	
10,200.0	6,911.8	9,988.3	6,731.2	97.8	96.7	-74.09	-306.8	3,458.2	655.3	468.8	186.47	3.514	
10,300.0	6,911.8	10,088.3	6,730.8	100.6	99.4	-74.05	-307.3	3,558.2	655.4	463.6	191.79	3.417	
10,400.0	6,911.8	10,188.3	6,730.3	103.3	102.2	-74.02	-307.8	3,658.2	655.5	458.4	197.11	3.326	
10,500.0	6,911.9	10,288.3	6,729.9	106.1	105.0	-73.98	-308.4	3,758.2	655.7	453.3	202.43	3.239	
10,600.0	6,911.9	10,388.3	6,729.4	108.9	107.8	-73.94	-308.9	3,858.2	655.8	448.1	207.75	3.157	
10,700.0	6,911.9	10,488.3	6,728.9	111.6	110.6	-73.90	-309.4	3,958.2	656.0	442.9	213.07	3.079	
10,800.0	6,911.9	10,588.3	6,728.5	114.4	113.4	-73.86	-310.0	4,058.2	656.1	437.7	218.40	3.004	
10,900.0	6,911.9	10,688.3	6,728.0	117.2	116.1	-73.82	-310.5	4,158.2	656.2	432.5	223.72	2.933	
11,000.0	6,911.9	10,788.3	6,727.6	119.9	118.9	-73.78	-311.0	4,258.1	656.4	427.3	229.04	2.866	
11,100.0	6,912.0	10,888.3	6,727.1	122.7	121.7	-73.74	-311.5	4,358.1	656.5	422.1	234.37	2.801	
11,200.0	6,912.0	10,988.3	6,726.7	125.5	124.5	-73.70	-312.1	4,458.1	656.6	416.9	239.69	2.740	
11,300.0	6,912.0	11,088.3	6,726.2	128.3	127.3	-73.66	-312.6	4,558.1	656.8	411.8	245.02	2.681	
11,349.1	6,912.0	11,137.4	6,726.0	129.6	128.7	-73.64	-312.9	4,607.2	656.8	409.2	247.63	2.653 SF	

<b>Company:</b>	PETROLEUM DEVELOPMENT CORP Weld County CO	<b>Local Co-ordinate Reference:</b>	Well Maxey 24P-402
<b>Project:</b>	SEC.24-T5N-R65W	<b>TVD Reference:</b>	WELL @ 4652.0ft (RKB - 15')
<b>Reference Site:</b>	Maxey 24O-HZ Pad Sec.24-T5N-R65W	<b>MD Reference:</b>	WELL @ 4652.0ft (RKB - 15')
<b>Site Error:</b>	0.0ft	<b>North Reference:</b>	True
<b>Reference Well:</b>	Maxey 24P-402	<b>Survey Calculation Method:</b>	Minimum Curvature
<b>Well Error:</b>	0.0ft	<b>Output errors are at</b>	2.00 sigma
<b>Reference Wellbore</b>	Wellbore #1	<b>Database:</b>	Landmark
<b>Reference Design:</b>	Plan #2 (8-9-13)	<b>Offset TVD Reference:</b>	Offset Datum

Offset Design Maxey 24O-HZ Pad Sec.24-T5N-R65W - Maxey 24O-402 - Wellbore #1 - Plan #2 (8-9-13)													Offset Site Error:	0.0 ft
Survey Program: 0-MWD													Offset Well Error:	0.0 ft
Measured Depth (ft)	Vertical Depth (ft)	Measured Depth (ft)	Vertical Depth (ft)	Reference	Offset	Semi Major Axis	Highside Toolface (°)	Offset Wellbore Centre +N/-S (ft)	Offset Wellbore Centre +E/-W (ft)	Between Centres (ft)	Between Ellipses (ft)	Minimum Separation (ft)	Separation Factor	Warning
0.0	0.0	0.0	0.0	0.0	0.0	92.34		-3.6	89.1	89.2				
100.0	100.0	99.0	99.0	0.1	0.1	92.34		-3.6	89.1	89.2	89.0	0.22	398.949	
200.0	200.0	199.0	199.0	0.3	0.3	92.34		-3.6	89.1	89.2	88.6	0.67	132.762 CC	
300.0	300.0	299.0	299.0	0.5	0.6	-94.56		-3.6	89.1	89.3	88.2	1.10	81.397 ES	
400.0	399.8	398.8	398.8	0.8	0.8	-97.87		-3.6	89.1	89.9	88.4	1.53	58.795	
500.0	499.5	498.5	498.5	1.0	1.0	-103.23		-3.6	89.1	91.5	89.5	2.00	45.835	
600.0	598.7	597.7	597.7	1.3	1.2	-110.29		-3.6	89.1	95.1	92.6	2.50	38.042	
700.0	697.5	696.5	696.5	1.6	1.5	-118.40		-3.6	89.1	101.6	98.6	3.03	33.559	
800.0	796.0	795.0	795.0	2.0	1.7	-126.14		-3.6	89.1	110.9	107.3	3.55	31.215	
900.0	894.5	893.5	893.5	2.4	1.9	-132.61		-3.6	89.1	121.8	117.8	4.06	30.030	
1,000.0	993.0	992.0	992.0	2.7	2.1	-137.97		-3.6	89.1	134.1	129.6	4.55	29.494	
1,100.0	1,091.6	1,090.6	1,090.6	3.1	2.3	-142.41		-3.6	89.1	147.4	142.3	5.03	29.324	
1,200.0	1,190.1	1,189.1	1,189.1	3.5	2.6	-146.10		-3.6	89.1	161.4	155.9	5.50	29.357	
1,300.0	1,288.6	1,287.6	1,287.6	3.9	2.8	-149.21		-3.6	89.1	175.9	169.9	5.96	29.502	
1,400.0	1,387.1	1,386.1	1,386.1	4.3	3.0	-151.83		-3.6	89.1	190.9	184.4	6.43	29.706	
1,500.0	1,485.6	1,484.6	1,484.6	4.7	3.2	-154.07		-3.6	89.1	206.2	199.3	6.89	29.937	
1,600.0	1,584.2	1,583.2	1,583.2	5.1	3.4	-156.01		-3.6	89.1	221.8	214.4	7.35	30.178	
1,700.0	1,682.7	1,681.7	1,681.7	5.5	3.7	-157.68		-3.6	89.1	237.5	229.7	7.81	30.419	
1,800.0	1,781.2	1,780.2	1,780.2	5.9	3.9	-159.15		-3.6	89.1	253.5	245.2	8.27	30.652	
1,900.0	1,879.7	1,878.7	1,878.7	6.3	4.1	-160.44		-3.6	89.1	269.6	260.9	8.73	30.876	
2,000.0	1,978.2	1,977.2	1,977.2	6.7	4.3	-161.59		-3.6	89.1	285.9	276.7	9.19	31.088	
2,100.0	2,076.8	2,076.5	2,076.5	7.1	4.5	-162.82		-3.3	88.2	302.1	292.4	9.65	31.312	
2,200.0	2,175.3	2,175.7	2,175.6	7.5	4.8	-164.53		-2.0	84.0	318.2	308.1	10.08	31.570	
2,300.0	2,273.8	2,274.2	2,273.8	7.9	5.0	-166.64		0.3	76.6	334.4	323.9	10.50	31.841	
2,400.0	2,372.3	2,371.9	2,370.9	8.3	5.2	-168.97		3.3	66.9	351.1	340.2	10.93	32.118	
2,500.0	2,470.8	2,469.5	2,468.0	8.7	5.4	-171.11		6.4	57.0	368.3	356.9	11.37	32.379	
2,600.0	2,569.4	2,567.1	2,565.0	9.1	5.7	-173.05		9.4	47.1	385.9	374.1	11.83	32.621	
2,700.0	2,667.9	2,664.7	2,662.1	9.5	5.9	-174.83		12.5	37.2	404.0	391.7	12.30	32.850	
2,800.0	2,766.4	2,762.3	2,759.1	9.9	6.1	-176.46		15.6	27.4	422.4	409.6	12.78	33.060	
2,900.0	2,864.9	2,859.9	2,856.2	10.3	6.4	-177.95		18.6	17.5	441.1	427.8	13.26	33.254	
3,000.0	2,963.5	2,957.5	2,953.2	10.7	6.6	-179.32		21.7	7.6	460.1	446.3	13.76	33.435	
3,100.0	3,062.0	3,055.1	3,050.3	11.1	6.9	179.42		24.8	-2.3	479.3	465.0	14.26	33.602	
3,200.0	3,160.5	3,152.7	3,147.4	11.5	7.1	178.25		27.9	-12.2	498.7	484.0	14.77	33.758	
3,300.0	3,259.0	3,250.3	3,244.4	11.9	7.4	177.17		30.9	-22.1	518.3	503.0	15.29	33.903	
3,400.0	3,357.5	3,347.9	3,341.5	12.3	7.7	176.17		34.0	-31.9	538.1	522.3	15.81	34.039	
3,500.0	3,456.1	3,445.5	3,438.5	12.7	7.9	175.24		37.1	-41.8	558.0	541.7	16.33	34.166	
3,600.0	3,554.6	3,543.1	3,535.6	13.1	8.2	174.38		40.1	-51.7	578.1	561.2	16.86	34.285	
3,700.0	3,653.1	3,640.7	3,632.6	13.5	8.5	173.57		43.2	-61.6	598.3	580.9	17.39	34.398	
3,800.0	3,751.6	3,738.3	3,729.7	13.9	8.7	172.81		46.3	-71.5	618.5	600.6	17.93	34.504	
3,900.0	3,850.1	3,835.9	3,826.7	14.3	9.0	172.10		49.4	-81.4	638.9	620.5	18.46	34.604	
4,000.0	3,948.7	3,935.9	3,926.2	14.7	9.3	171.44		52.5	-91.3	659.3	640.3	19.00	34.706	
4,100.0	4,047.2	4,042.5	4,032.4	15.1	9.5	171.01		54.9	-99.2	678.9	659.4	19.50	34.818	
4,200.0	4,145.7	4,149.7	4,139.6	15.5	9.7	170.91		56.2	-103.2	697.2	677.2	19.96	34.933	
4,300.0	4,244.2	4,253.4	4,243.2	15.9	9.9	171.09		56.4	-103.9	714.3	693.9	20.40	35.020	
4,400.0	4,342.8	4,351.9	4,341.8	16.2	10.1	171.30		56.4	-103.9	731.3	710.4	20.84	35.083	
4,500.0	4,441.3	4,450.4	4,440.3	16.6	10.3	171.50		56.4	-103.9	748.2	726.9	21.30	35.129	
4,600.0	4,539.8	4,549.0	4,538.8	17.0	10.5	171.69		56.4	-103.9	765.2	743.4	21.76	35.171	
4,700.0	4,638.3	4,647.5	4,637.3	17.4	10.7	171.87		56.4	-103.9	782.1	759.9	22.21	35.211	
4,800.0	4,736.8	4,746.0	4,735.8	17.8	10.9	172.04		56.4	-103.9	799.1	776.4	22.67	35.249	
4,900.0	4,835.4	4,844.5	4,834.4	18.2	11.1	172.21		56.4	-103.9	816.1	792.9	23.13	35.284	
5,000.0	4,933.9	4,943.1	4,932.9	18.6	11.3	172.37		56.4	-103.9	833.0	809.5	23.59	35.318	

CC - Min centre to center distance or convergent point, SF - min separation factor, ES - min ellipse separation

<b>Company:</b>	PETROLEUM DEVELOPMENT CORP Weld County CO	<b>Local Co-ordinate Reference:</b>	Well Maxey 24P-402
<b>Project:</b>	SEC.24-T5N-R65W	<b>TVD Reference:</b>	WELL @ 4652.0ft (RKB - 15')
<b>Reference Site:</b>	Maxey 24O-HZ Pad Sec.24-T5N-R65W	<b>MD Reference:</b>	WELL @ 4652.0ft (RKB - 15')
<b>Site Error:</b>	0.0ft	<b>North Reference:</b>	True
<b>Reference Well:</b>	Maxey 24P-402	<b>Survey Calculation Method:</b>	Minimum Curvature
<b>Well Error:</b>	0.0ft	<b>Output errors are at</b>	2.00 sigma
<b>Reference Wellbore</b>	Wellbore #1	<b>Database:</b>	Landmark
<b>Reference Design:</b>	Plan #2 (8-9-13)	<b>Offset TVD Reference:</b>	Offset Datum

Offset Design Maxey 24O-HZ Pad Sec.24-T5N-R65W - Maxey 24O-402 - Wellbore #1 - Plan #2 (8-9-13)													Offset Site Error:	0.0 ft
Survey Program: 0-MWD													Offset Well Error:	0.0 ft
Measured Depth (ft)	Vertical Depth (ft)	Measured Depth (ft)	Vertical Depth (ft)	Reference	Offset	Semi Major Axis	Highside Toolface (°)	Offset Wellbore Centre +N/-S (ft)	Offset Wellbore Centre +E/-W (ft)	Between Centres (ft)	Between Ellipses (ft)	Minimum Separation (ft)	Separation Factor	Warning
5,100.0	5,032.4	5,041.6	5,031.4	19.0	11.5	172.52		56.4	-103.9	850.0	826.0	24.05	35.350	
5,200.0	5,130.9	5,140.1	5,129.9	19.4	11.7	172.67		56.4	-103.9	867.0	842.5	24.51	35.379	
5,300.0	5,229.4	5,238.6	5,228.4	19.8	12.0	172.81		56.4	-103.9	884.0	859.1	24.97	35.408	
5,400.0	5,328.0	5,337.1	5,327.0	20.2	12.2	172.95		56.4	-103.9	901.0	875.6	25.43	35.434	
5,500.0	5,426.5	5,435.7	5,425.5	20.6	12.4	173.08		56.4	-103.9	918.1	892.2	25.89	35.460	
5,600.0	5,525.0	5,534.2	5,524.0	21.0	12.6	173.21		56.4	-103.9	935.0	908.7	26.36	35.473	
5,700.0	5,623.9	5,633.1	5,622.9	21.3	12.8	173.35		56.4	-103.9	949.8	923.0	26.82	35.417	
5,800.0	5,723.2	5,732.4	5,722.2	21.5	13.0	173.46		56.4	-103.9	961.1	933.9	27.24	35.280	
5,900.0	5,822.9	5,832.1	5,821.9	21.7	13.2	173.53		56.4	-103.9	969.0	941.3	27.63	35.067	
6,000.0	5,922.8	5,932.0	5,921.8	21.8	13.4	173.57		56.4	-103.9	973.4	945.4	27.99	34.781	
6,100.0	6,022.8	6,032.0	6,021.8	22.0	13.6	-0.64		56.4	-103.9	974.4	939.4	35.00	27.840	
6,200.0	6,122.8	6,132.0	6,121.8	22.1	13.9	-0.64		56.4	-103.9	974.4	939.1	35.32	27.587	
6,300.0	6,222.6	6,233.7	6,223.4	22.2	14.0	-90.95		56.3	-99.0	974.4	945.4	29.05	33.545	
6,400.0	6,321.0	6,335.8	6,323.8	22.3	14.2	-90.93		56.2	-80.8	974.4	945.1	29.33	33.228	
6,500.0	6,416.2	6,437.8	6,420.8	22.4	14.3	-90.90		56.1	-49.4	974.4	944.9	29.57	32.948	
6,600.0	6,506.7	6,539.8	6,512.6	22.5	14.4	-90.85		55.9	-5.4	974.4	944.6	29.87	32.624	
6,700.0	6,590.8	6,641.6	6,597.7	22.6	14.7	-90.79		55.6	50.3	974.4	944.1	30.32	32.143	
6,800.0	6,667.2	6,743.3	6,674.6	22.7	15.0	-90.72		55.3	116.7	974.5	943.4	31.06	31.372	
6,900.0	6,734.5	6,844.7	6,741.8	22.9	15.7	-90.63		54.9	192.7	974.5	942.2	32.26	30.209	
7,000.0	6,791.7	6,946.0	6,798.3	23.2	16.6	-90.53		54.5	276.6	974.5	940.5	34.03	28.637	
7,100.0	6,837.6	7,047.0	6,843.1	23.7	17.8	-90.42		54.0	367.1	974.5	938.1	36.44	26.742	
7,200.0	6,871.5	7,147.8	6,875.5	24.4	19.4	-90.31		53.6	462.5	974.5	935.1	39.48	24.688	
7,300.0	6,892.9	7,248.4	6,895.0	25.4	21.2	-90.19		53.1	561.0	974.6	931.5	43.04	22.644	
7,400.0	6,904.1	7,348.4	6,905.7	26.8	23.2	-90.16		52.6	660.5	974.6	927.6	47.01	20.734	
7,500.0	6,911.0	7,448.6	6,911.3	28.4	25.3	-90.08		52.1	760.5	974.7	923.4	51.26	19.015	
7,600.0	6,911.3	7,548.6	6,911.3	30.3	27.6	-90.06		51.6	860.5	974.7	919.0	55.74	17.487	
7,700.0	6,911.4	7,648.6	6,911.4	32.4	29.9	-90.06		51.1	960.5	974.7	914.3	60.40	16.138	
7,800.0	6,911.4	7,748.6	6,911.4	34.6	32.3	-90.06		50.6	1,060.5	974.8	909.6	65.22	14.947	
7,900.0	6,911.4	7,848.6	6,911.4	36.9	34.8	-90.06		50.2	1,160.5	974.8	904.7	70.15	13.897	
8,000.0	6,911.4	7,948.6	6,911.4	39.3	37.3	-90.06		49.7	1,260.5	974.9	899.7	75.18	12.967	
8,100.0	6,911.4	8,048.6	6,911.4	41.7	39.9	-90.06		49.2	1,360.5	974.9	894.6	80.29	12.143	
8,200.0	6,911.5	8,148.6	6,911.5	44.2	42.5	-90.06		48.7	1,460.5	975.0	889.5	85.46	11.408	
8,300.0	6,911.5	8,248.6	6,911.5	46.8	45.1	-90.06		48.2	1,560.5	975.0	884.3	90.69	10.752	
8,400.0	6,911.5	8,348.6	6,911.5	49.3	47.7	-90.06		47.7	1,660.5	975.1	879.1	95.96	10.162	
8,500.0	6,911.5	8,448.6	6,911.5	51.9	50.4	-90.06		47.2	1,760.5	975.1	873.8	101.26	9.629	
8,600.0	6,911.5	8,548.6	6,911.5	54.5	53.1	-90.06		46.7	1,860.5	975.1	868.5	106.60	9.147	
8,700.0	6,911.5	8,648.6	6,911.5	57.1	55.7	-90.06		46.2	1,960.5	975.2	863.2	111.97	8.709	
8,800.0	6,911.6	8,748.6	6,911.6	59.8	58.4	-90.06		45.7	2,060.5	975.2	857.9	117.36	8.310	
8,900.0	6,911.6	8,848.6	6,911.6	62.5	61.1	-90.06		45.2	2,160.5	975.3	852.5	122.77	7.944	
9,000.0	6,911.6	8,948.6	6,911.6	65.1	63.9	-90.06		44.8	2,260.5	975.3	847.1	128.20	7.608	
9,100.0	6,911.6	9,048.6	6,911.6	67.8	66.6	-90.06		44.3	2,360.5	975.4	841.7	133.64	7.298	
9,200.0	6,911.6	9,148.6	6,911.6	70.5	69.3	-90.06		43.8	2,460.5	975.4	836.3	139.10	7.012	
9,300.0	6,911.6	9,248.6	6,911.6	73.2	72.1	-90.06		43.3	2,560.5	975.4	830.9	144.57	6.747	
9,400.0	6,911.7	9,348.6	6,911.7	75.9	74.8	-90.06		42.8	2,660.5	975.5	825.4	150.05	6.501	
9,500.0	6,911.7	9,448.6	6,911.7	78.6	77.5	-90.06		42.3	2,760.5	975.5	820.0	155.54	6.272	
9,600.0	6,911.7	9,548.6	6,911.7	81.4	80.3	-90.06		41.8	2,860.5	975.6	814.5	161.04	6.058	
9,700.0	6,911.7	9,648.6	6,911.7	84.1	83.0	-90.06		41.3	2,960.5	975.6	809.1	166.55	5.858	
9,800.0	6,911.7	9,748.6	6,911.7	86.8	85.8	-90.06		40.8	3,060.5	975.7	803.6	172.07	5.670	
9,900.0	6,911.7	9,848.6	6,911.7	89.6	88.6	-90.06		40.3	3,160.5	975.7	798.1	177.59	5.494	
10,000.0	6,911.8	9,948.6	6,911.8	92.3	91.3	-90.06		39.8	3,260.5	975.8	792.6	183.12	5.329	
10,100.0	6,911.8	10,048.6	6,911.8	95.1	94.1	-90.06		39.3	3,360.5	975.8	787.1	188.65	5.173	

CC - Min centre to center distance or convergent point, SF - min separation factor, ES - min ellipse separation

<b>Company:</b>	PETROLEUM DEVELOPMENT CORP Weld County CO	<b>Local Co-ordinate Reference:</b>	Well Maxey 24P-402
<b>Project:</b>	SEC.24-T5N-R65W	<b>TVD Reference:</b>	WELL @ 4652.0ft (RKB - 15')
<b>Reference Site:</b>	Maxey 24O-HZ Pad Sec.24-T5N-R65W	<b>MD Reference:</b>	WELL @ 4652.0ft (RKB - 15')
<b>Site Error:</b>	0.0ft	<b>North Reference:</b>	True
<b>Reference Well:</b>	Maxey 24P-402	<b>Survey Calculation Method:</b>	Minimum Curvature
<b>Well Error:</b>	0.0ft	<b>Output errors are at</b>	2.00 sigma
<b>Reference Wellbore</b>	Wellbore #1	<b>Database:</b>	Landmark
<b>Reference Design:</b>	Plan #2 (8-9-13)	<b>Offset TVD Reference:</b>	Offset Datum

<b>Offset Design</b> Maxey 24O-HZ Pad Sec.24-T5N-R65W - Maxey 24O-402 - Wellbore #1 - Plan #2 (8-9-13)												<b>Offset Site Error:</b>	0.0 ft
Survey Program: 0-MWD												<b>Offset Well Error:</b>	0.0 ft
Measured Depth (ft)	Vertical Depth (ft)	Measured Depth (ft)	Vertical Depth (ft)	Reference	Offset	Semi Major Axis Highside Toolface (°)	Offset Wellbore Centre +N/-S (ft)	Offset Wellbore Centre +E/-W (ft)	Between Centres (ft)	Between Ellipses (ft)	Minimum Separation (ft)	Separation Factor	Warning
10,200.0	6,911.8	10,148.6	6,911.8	97.8	96.9	-90.06	38.9	3,460.5	975.8	781.7	194.19	5.025	
10,300.0	6,911.8	10,248.6	6,911.8	100.6	99.6	-90.06	38.4	3,560.5	975.9	776.2	199.73	4.886	
10,400.0	6,911.8	10,348.6	6,911.8	103.3	102.4	-90.06	37.9	3,660.5	975.9	770.6	205.28	4.754	
10,500.0	6,911.9	10,448.6	6,911.9	106.1	105.2	-90.06	37.4	3,760.5	976.0	765.1	210.83	4.629	
10,600.0	6,911.9	10,548.6	6,911.9	108.9	108.0	-90.06	36.9	3,860.4	976.0	759.6	216.38	4.511	
10,700.0	6,911.9	10,648.6	6,911.9	111.6	110.8	-90.06	36.4	3,960.4	976.1	754.1	221.94	4.398	
10,800.0	6,911.9	10,748.6	6,911.9	114.4	113.5	-90.06	35.9	4,060.4	976.1	748.6	227.50	4.291	
10,900.0	6,911.9	10,848.6	6,911.9	117.2	116.3	-90.06	35.4	4,160.4	976.1	743.1	233.06	4.188	
11,000.0	6,911.9	10,948.6	6,911.9	119.9	119.1	-90.06	34.9	4,260.4	976.2	737.6	238.63	4.091	
11,100.0	6,912.0	11,048.6	6,912.0	122.7	121.9	-90.06	34.4	4,360.4	976.2	732.0	244.19	3.998	
11,200.0	6,912.0	11,148.6	6,912.0	125.5	124.7	-90.06	33.9	4,460.4	976.3	726.5	249.76	3.909	
11,300.0	6,912.0	11,248.6	6,912.0	128.3	127.5	-90.06	33.5	4,560.4	976.3	721.0	255.34	3.824	
11,319.7	6,912.0	11,268.3	6,912.0	128.8	128.0	-90.06	33.4	4,580.1	976.3	719.9	256.43	3.807	
11,349.1	6,912.0	11,295.6	6,912.0	129.6	128.8	-90.06	33.2	4,607.4	976.3	718.3	258.01	3.784 SF	

<b>Company:</b>	PETROLEUM DEVELOPMENT CORP Weld County CO	<b>Local Co-ordinate Reference:</b>	Well Maxey 24P-402
<b>Project:</b>	SEC.24-T5N-R65W	<b>TVD Reference:</b>	WELL @ 4652.0ft (RKB - 15')
<b>Reference Site:</b>	Maxey 24O-HZ Pad Sec.24-T5N-R65W	<b>MD Reference:</b>	WELL @ 4652.0ft (RKB - 15')
<b>Site Error:</b>	0.0ft	<b>North Reference:</b>	True
<b>Reference Well:</b>	Maxey 24P-402	<b>Survey Calculation Method:</b>	Minimum Curvature
<b>Well Error:</b>	0.0ft	<b>Output errors are at</b>	2.00 sigma
<b>Reference Wellbore</b>	Wellbore #1	<b>Database:</b>	Landmark
<b>Reference Design:</b>	Plan #2 (8-9-13)	<b>Offset TVD Reference:</b>	Offset Datum

Offset Design Maxey 24O-HZ Pad Sec.24-T5N-R65W - Maxey 24P-312 - Wellbore #1 - Plan #2 (8-9-13)													Offset Site Error:	0.0 ft
Survey Program: 0-MWD													Offset Well Error:	0.0 ft
Measured Depth (ft)	Vertical Depth (ft)	Measured Depth (ft)	Vertical Depth (ft)	Reference	Offset	Semi Major Axis	Highside Toolface (°)	Offset Wellbore Centre +N/-S (ft)	+E/-W (ft)	Distance Between Centres (ft)	Between Ellipses (ft)	Minimum Separation (ft)	Separation Factor	Warning
0.0	0.0	0.0	0.0	0.0	0.0	89.99	89.99	0.0	30.6	30.6				
100.0	100.0	100.0	100.0	0.1	0.1	89.99	89.99	0.0	30.6	30.6	30.4	0.22	136.341	
200.0	200.0	200.0	200.0	0.3	0.3	89.99	89.99	0.0	30.6	30.6	30.0	0.67	45.447 CC	
300.0	300.0	300.0	300.0	0.5	0.6	-99.01	-99.01	0.0	30.6	30.9	29.8	1.10	28.063 ES	
400.0	399.8	399.8	399.8	0.8	0.8	-108.24	-108.24	0.0	30.6	32.1	30.6	1.53	20.954	
500.0	499.5	499.5	499.5	1.0	1.0	-121.50	-121.50	0.0	30.6	35.8	33.8	2.00	17.937	
600.0	598.7	598.7	598.7	1.3	1.2	-135.17	-135.17	0.0	30.6	43.5	41.0	2.48	17.555	
700.0	697.5	697.5	697.5	1.6	1.5	-146.42	-146.42	0.0	30.6	55.7	52.7	2.95	18.869	
800.0	796.0	796.0	796.0	2.0	1.7	-154.10	-154.10	0.0	30.6	70.7	67.2	3.41	20.708	
900.0	894.5	894.5	894.5	2.4	1.9	-159.06	-159.06	0.0	30.6	86.4	82.6	3.87	22.335	
1,000.0	993.0	993.0	993.0	2.7	2.1	-162.48	-162.48	0.0	30.6	102.6	98.3	4.33	23.714	
1,100.0	1,091.6	1,095.4	1,095.4	3.1	2.3	-164.93	-164.93	-1.6	30.3	117.6	112.8	4.77	24.674	
1,200.0	1,190.1	1,199.1	1,199.0	3.5	2.5	-166.63	-166.63	-6.8	29.2	129.2	124.0	5.18	24.915	
1,300.0	1,288.6	1,303.6	1,303.0	3.9	2.7	-167.90	-167.90	-15.7	27.3	137.3	131.6	5.62	24.426	
1,400.0	1,387.1	1,408.1	1,406.8	4.3	2.9	-168.90	-168.90	-28.4	24.5	141.8	135.7	6.07	23.364	
1,500.0	1,485.6	1,508.1	1,505.7	4.7	3.2	-169.76	-169.76	-42.0	21.6	144.8	138.2	6.52	22.213	
1,600.0	1,584.2	1,608.0	1,604.7	5.1	3.4	-170.57	-170.57	-55.5	18.7	147.8	140.8	6.97	21.194	
1,700.0	1,682.7	1,707.9	1,703.6	5.5	3.7	-171.36	-171.36	-69.1	15.8	150.9	143.4	7.43	20.291	
1,800.0	1,781.2	1,807.9	1,802.6	5.9	4.0	-172.11	-172.11	-82.7	12.8	153.9	146.0	7.90	19.486	
1,900.0	1,879.7	1,907.8	1,901.6	6.3	4.3	-172.84	-172.84	-96.3	9.9	157.1	148.7	8.37	18.768	
2,000.0	1,978.2	2,007.7	2,000.5	6.7	4.6	-173.53	-173.53	-109.9	7.0	160.2	151.4	8.84	18.122	
2,100.0	2,076.8	2,107.7	2,099.5	7.1	4.9	-174.20	-174.20	-123.5	4.1	163.4	154.0	9.31	17.538	
2,200.0	2,175.3	2,207.6	2,198.5	7.5	5.2	-174.85	-174.85	-137.1	1.1	166.5	156.8	9.79	17.008	
2,300.0	2,273.8	2,307.5	2,297.4	7.9	5.6	-175.47	-175.47	-150.7	-1.8	169.7	159.5	10.27	16.526	
2,400.0	2,372.3	2,407.5	2,396.4	8.3	5.9	-176.06	-176.06	-164.3	-4.7	173.0	162.2	10.75	16.085	
2,500.0	2,470.8	2,507.4	2,495.3	8.7	6.2	-176.64	-176.64	-177.9	-7.6	176.2	165.0	11.24	15.681	
2,600.0	2,569.4	2,607.3	2,594.3	9.1	6.5	-177.19	-177.19	-191.5	-10.6	179.5	167.7	11.72	15.309	
2,700.0	2,667.9	2,707.3	2,693.3	9.5	6.9	-177.73	-177.73	-205.1	-13.5	182.7	170.5	12.21	14.966	
2,800.0	2,766.4	2,807.2	2,792.2	9.9	7.2	-178.24	-178.24	-218.6	-16.4	186.0	173.3	12.70	14.647	
2,900.0	2,864.9	2,907.1	2,891.2	10.3	7.5	-178.74	-178.74	-232.2	-19.3	189.3	176.1	13.19	14.352	
3,000.0	2,963.5	3,007.1	2,990.1	10.7	7.9	-179.22	-179.22	-245.8	-22.3	192.7	179.0	13.69	14.077	
3,100.0	3,062.0	3,107.0	3,089.1	11.1	8.2	-179.68	-179.68	-259.4	-25.2	196.0	181.8	14.18	13.820	
3,200.0	3,160.5	3,206.9	3,188.1	11.5	8.6	179.87	179.87	-273.0	-28.1	199.3	184.6	14.68	13.580	
3,300.0	3,259.0	3,306.9	3,287.0	11.9	8.9	179.44	179.44	-286.6	-31.0	202.7	187.5	15.18	13.355	
3,400.0	3,357.5	3,406.8	3,386.0	12.3	9.2	179.02	179.02	-300.2	-34.0	206.0	190.4	15.68	13.144	
3,500.0	3,456.1	3,506.7	3,484.9	12.7	9.6	178.61	178.61	-313.8	-36.9	209.4	193.2	16.18	12.945	
3,600.0	3,554.6	3,606.7	3,583.9	13.1	9.9	178.22	178.22	-327.4	-39.8	212.8	196.1	16.68	12.758	
3,700.0	3,653.1	3,706.6	3,682.9	13.5	10.3	177.84	177.84	-341.0	-42.7	216.2	199.0	17.19	12.581	
3,800.0	3,751.6	3,806.5	3,781.8	13.9	10.6	177.47	177.47	-354.6	-45.7	219.6	201.9	17.69	12.414	
3,900.0	3,850.1	3,906.4	3,880.8	14.3	10.9	177.11	177.11	-368.2	-48.6	223.0	204.8	18.20	12.255	
4,000.0	3,948.7	4,006.4	3,979.7	14.7	11.3	176.76	176.76	-381.7	-51.5	226.4	207.7	18.71	12.105	
4,100.0	4,047.2	4,106.3	4,078.7	15.1	11.6	176.43	176.43	-395.3	-54.4	229.9	210.7	19.22	11.962	
4,200.0	4,145.7	4,206.2	4,177.7	15.5	12.0	176.10	176.10	-408.9	-57.4	233.3	213.6	19.73	11.826	
4,300.0	4,244.2	4,306.2	4,276.6	15.9	12.3	175.78	175.78	-422.5	-60.3	236.8	216.5	20.24	11.697	
4,400.0	4,342.8	4,406.1	4,375.6	16.2	12.7	175.48	175.48	-436.1	-63.2	240.2	219.5	20.76	11.574	
4,500.0	4,441.3	4,506.0	4,474.5	16.6	13.0	175.18	175.18	-449.7	-66.1	243.7	222.4	21.27	11.456	
4,600.0	4,539.8	4,606.0	4,573.5	17.0	13.4	174.89	174.89	-463.3	-69.1	247.1	225.4	21.79	11.344	
4,700.0	4,638.3	4,705.9	4,672.5	17.4	13.7	174.60	174.60	-476.9	-72.0	250.6	228.3	22.30	11.236	
4,800.0	4,736.8	4,805.8	4,771.4	17.8	14.1	174.33	174.33	-490.5	-74.9	254.1	231.3	22.82	11.133	
4,900.0	4,835.4	4,905.8	4,870.4	18.2	14.4	174.06	174.06	-504.1	-77.8	257.6	234.2	23.34	11.035	
5,000.0	4,933.9	5,005.7	4,969.3	18.6	14.8	173.80	173.80	-517.7	-80.8	261.1	237.2	23.86	10.940	

CC - Min centre to center distance or convergent point, SF - min separation factor, ES - min ellipse separation

<b>Company:</b>	PETROLEUM DEVELOPMENT CORP Weld County CO	<b>Local Co-ordinate Reference:</b>	Well Maxey 24P-402
<b>Project:</b>	SEC.24-T5N-R65W	<b>TVD Reference:</b>	WELL @ 4652.0ft (RKB - 15')
<b>Reference Site:</b>	Maxey 24O-HZ Pad Sec.24-T5N-R65W	<b>MD Reference:</b>	WELL @ 4652.0ft (RKB - 15')
<b>Site Error:</b>	0.0ft	<b>North Reference:</b>	True
<b>Reference Well:</b>	Maxey 24P-402	<b>Survey Calculation Method:</b>	Minimum Curvature
<b>Well Error:</b>	0.0ft	<b>Output errors are at</b>	2.00 sigma
<b>Reference Wellbore</b>	Wellbore #1	<b>Database:</b>	Landmark
<b>Reference Design:</b>	Plan #2 (8-9-13)	<b>Offset TVD Reference:</b>	Offset Datum

Offset Design Maxey 24O-HZ Pad Sec.24-T5N-R65W - Maxey 24P-312 - Wellbore #1 - Plan #2 (8-9-13)													Offset Site Error:	0.0 ft
Survey Program: 0-MWD													Offset Well Error:	0.0 ft
Measured Depth (ft)	Vertical Depth (ft)	Measured Depth (ft)	Vertical Depth (ft)	Reference	Offset	Semi Major Axis	Highside Toolface (°)	Offset Wellbore Centre +N/-S (ft)	+E/-W (ft)	Between Centres (ft)	Between Ellipses (ft)	Minimum Separation (ft)	Separation Factor	Warning
5,100.0	5,032.4	5,105.6	5,068.3	19.0	15.1	173.55	-531.3	-83.7	264.6	240.2	24.38	10.850		
5,200.0	5,130.9	5,205.6	5,167.3	19.4	15.4	173.30	-544.9	-86.6	268.1	243.2	24.91	10.763		
5,300.0	5,229.4	5,305.5	5,266.2	19.8	15.8	173.06	-558.4	-89.5	271.6	246.1	25.43	10.679		
5,400.0	5,328.0	5,405.4	5,365.2	20.2	16.1	172.82	-572.0	-92.5	275.1	249.1	25.95	10.598		
5,500.0	5,426.5	5,505.4	5,464.1	20.6	16.5	172.60	-585.6	-95.4	278.6	252.1	26.48	10.521		
5,600.0	5,525.0	5,600.0	5,557.9	21.0	16.8	172.41	-598.0	-98.0	282.7	255.7	26.98	10.478		
5,700.0	5,623.9	5,690.9	5,648.4	21.3	17.0	172.33	-607.2	-100.0	287.4	260.0	27.37	10.497		
5,800.0	5,723.2	5,781.9	5,739.1	21.5	17.2	172.30	-613.6	-101.4	291.7	264.0	27.72	10.521		
5,900.0	5,822.9	5,872.8	5,829.9	21.7	17.3	172.33	-617.2	-102.2	295.6	267.6	28.02	10.550		
6,000.0	5,922.8	5,965.7	5,922.8	21.8	17.5	172.40	-618.0	-102.4	299.1	270.8	28.29	10.575		
6,100.0	6,022.8	6,065.7	6,022.8	22.0	17.6	-1.79	-618.0	-102.4	300.1	260.9	39.20	7.656		
6,200.0	6,122.8	6,166.5	6,123.5	22.1	17.7	-1.22	-618.0	-99.4	300.1	260.6	39.48	7.600		
6,285.1	6,207.7	6,251.6	6,207.7	22.1	17.8	-89.97	-618.1	-87.2	299.9	270.9	29.00	10.343		
6,300.0	6,222.6	6,266.3	6,222.1	22.2	17.8	-89.52	-618.1	-84.2	300.0	270.9	29.01	10.339		
6,400.0	6,321.0	6,364.8	6,316.6	22.3	17.9	-87.51	-618.2	-56.7	300.2	271.1	29.17	10.291		
6,500.0	6,416.2	6,461.9	6,405.5	22.4	18.0	-85.55	-618.5	-17.9	300.8	271.5	29.39	10.236		
6,600.0	6,506.7	6,557.9	6,487.9	22.5	18.1	-83.69	-618.7	31.2	301.8	272.0	29.73	10.149		
6,700.0	6,590.8	6,652.7	6,562.7	22.6	18.2	-81.96	-619.1	89.5	302.9	272.6	30.27	10.006		
6,800.0	6,667.2	6,746.6	6,629.0	22.7	18.4	-80.37	-619.4	155.9	304.2	273.1	31.10	9.781		
6,900.0	6,734.5	6,839.6	6,686.2	22.9	18.6	-78.95	-619.8	229.2	305.6	273.3	32.29	9.463		
7,000.0	6,791.7	6,931.9	6,733.7	23.2	19.0	-77.71	-620.3	308.2	306.9	273.0	33.90	9.053		
7,100.0	6,837.6	7,023.5	6,771.1	23.7	19.8	-76.68	-620.8	391.8	308.1	272.2	35.95	8.571		
7,200.0	6,871.5	7,114.7	6,798.1	24.4	20.9	-75.86	-621.2	478.8	309.2	270.8	38.43	8.045		
7,300.0	6,892.9	7,205.4	6,814.6	25.4	22.3	-75.25	-621.7	568.0	310.0	268.7	41.30	7.505		
7,400.0	6,904.1	7,295.7	6,820.3	26.8	24.0	-74.45	-622.2	658.0	311.3	266.6	44.69	6.965		
7,500.0	6,911.0	7,394.6	6,819.8	28.4	26.1	-73.09	-622.8	756.9	313.3	265.1	48.16	6.506		
7,600.0	6,911.3	7,494.6	6,819.3	30.3	28.2	-72.93	-623.4	856.9	313.5	261.2	52.34	5.990		
7,700.0	6,911.4	7,594.6	6,818.8	32.4	30.5	-72.83	-623.9	956.9	313.7	256.8	56.82	5.521		
7,800.0	6,911.4	7,694.6	6,818.2	34.6	32.9	-72.73	-624.5	1,056.9	313.8	252.4	61.43	5.108		
7,900.0	6,911.4	7,794.6	6,817.7	36.9	35.4	-72.63	-625.0	1,156.9	313.9	247.8	66.15	4.746		
8,000.0	6,911.4	7,894.6	6,817.1	39.3	37.9	-72.53	-625.6	1,256.9	314.1	243.1	70.96	4.426		
8,100.0	6,911.4	7,994.6	6,816.6	41.7	40.4	-72.43	-626.2	1,356.9	314.2	238.4	75.83	4.144		
8,200.0	6,911.5	8,094.6	6,816.0	44.2	43.0	-72.33	-626.7	1,456.9	314.4	233.6	80.76	3.893		
8,300.0	6,911.5	8,194.6	6,815.5	46.8	45.6	-72.24	-627.3	1,556.8	314.5	228.8	85.73	3.669		
8,400.0	6,911.5	8,294.6	6,815.0	49.3	48.2	-72.14	-627.8	1,656.8	314.7	223.9	90.74	3.468		
8,500.0	6,911.5	8,394.6	6,814.4	51.9	50.9	-72.04	-628.4	1,756.8	314.8	219.0	95.77	3.287		
8,600.0	6,911.5	8,494.6	6,813.9	54.5	53.5	-71.94	-629.0	1,856.8	315.0	214.1	100.83	3.124		
8,700.0	6,911.5	8,594.6	6,813.3	57.1	56.2	-71.84	-629.5	1,956.8	315.1	209.2	105.91	2.975		
8,800.0	6,911.6	8,694.6	6,812.8	59.8	58.9	-71.75	-630.1	2,056.8	315.3	204.3	111.00	2.840		
8,900.0	6,911.6	8,794.6	6,812.3	62.5	61.6	-71.65	-630.6	2,156.8	315.4	199.3	116.11	2.716		
9,000.0	6,911.6	8,894.6	6,811.7	65.1	64.3	-71.55	-631.2	2,256.8	315.6	194.3	121.23	2.603		
9,100.0	6,911.6	8,994.6	6,811.2	67.8	67.0	-71.45	-631.8	2,356.8	315.7	189.4	126.36	2.499		
9,200.0	6,911.6	9,094.6	6,810.6	70.5	69.7	-71.35	-632.3	2,456.8	315.9	184.4	131.49	2.402		
9,300.0	6,911.6	9,194.6	6,810.1	73.2	72.5	-71.26	-632.9	2,556.8	316.0	179.4	136.63	2.313		
9,400.0	6,911.7	9,294.6	6,809.6	75.9	75.2	-71.16	-633.5	2,656.8	316.2	174.4	141.77	2.230		
9,500.0	6,911.7	9,394.6	6,809.0	78.6	77.9	-71.06	-634.0	2,756.8	316.3	169.4	146.92	2.153		
9,600.0	6,911.7	9,494.6	6,808.5	81.4	80.7	-70.97	-634.6	2,856.8	316.5	164.4	152.06	2.081		
9,700.0	6,911.7	9,594.6	6,807.9	84.1	83.4	-70.87	-635.1	2,956.8	316.7	159.4	157.21	2.014		
9,800.0	6,911.7	9,694.6	6,807.4	86.8	86.2	-70.77	-635.7	3,056.8	316.8	154.5	162.36	1.951		
9,900.0	6,911.7	9,794.6	6,806.8	89.6	89.0	-70.67	-636.3	3,156.8	317.0	149.5	167.51	1.892		
10,000.0	6,911.8	9,894.6	6,806.3	92.3	91.7	-70.58	-636.8	3,256.8	317.1	144.5	172.66	1.837		

CC - Min centre to center distance or convergent point, SF - min separation factor, ES - min ellipse separation

<b>Company:</b>	PETROLEUM DEVELOPMENT CORP Weld County CO	<b>Local Co-ordinate Reference:</b>	Well Maxey 24P-402
<b>Project:</b>	SEC.24-T5N-R65W	<b>TVD Reference:</b>	WELL @ 4652.0ft (RKB - 15')
<b>Reference Site:</b>	Maxey 24O-HZ Pad Sec.24-T5N-R65W	<b>MD Reference:</b>	WELL @ 4652.0ft (RKB - 15')
<b>Site Error:</b>	0.0ft	<b>North Reference:</b>	True
<b>Reference Well:</b>	Maxey 24P-402	<b>Survey Calculation Method:</b>	Minimum Curvature
<b>Well Error:</b>	0.0ft	<b>Output errors are at</b>	2.00 sigma
<b>Reference Wellbore</b>	Wellbore #1	<b>Database:</b>	Landmark
<b>Reference Design:</b>	Plan #2 (8-9-13)	<b>Offset TVD Reference:</b>	Offset Datum

<b>Offset Design</b> Maxey 24O-HZ Pad Sec.24-T5N-R65W - Maxey 24P-312 - Wellbore #1 - Plan #2 (8-9-13)												<b>Offset Site Error:</b>	0.0 ft
Survey Program: 0-MWD												<b>Offset Well Error:</b>	0.0 ft
Measured Depth (ft)	Vertical Depth (ft)	Measured Depth (ft)	Vertical Depth (ft)	Reference	Offset	Highside Toolface (°)	Offset Wellbore Centre +N/-S (ft)	Offset Wellbore Centre +E/-W (ft)	Between Centres (ft)	Between Ellipses (ft)	Minimum Separation (ft)	Separation Factor	Warning
10,100.0	6,911.8	9,994.6	6,805.8	95.1	94.5	-70.48	-637.4	3,356.8	317.3	139.5	177.80	1.785	
10,200.0	6,911.8	10,094.6	6,805.2	97.8	97.2	-70.38	-637.9	3,456.8	317.5	134.5	182.95	1.735	
10,300.0	6,911.8	10,194.6	6,804.7	100.6	100.0	-70.29	-638.5	3,556.8	317.6	129.5	188.09	1.689	
10,400.0	6,911.8	10,294.5	6,804.1	103.3	102.8	-70.19	-639.1	3,656.8	317.8	124.6	193.23	1.645	
10,500.0	6,911.9	10,394.5	6,803.6	106.1	105.6	-70.10	-639.6	3,756.7	318.0	119.6	198.37	1.603	
10,600.0	6,911.9	10,494.5	6,803.1	108.9	108.3	-70.00	-640.2	3,856.7	318.1	114.6	203.51	1.563	
10,700.0	6,911.9	10,594.5	6,802.5	111.6	111.1	-69.90	-640.7	3,956.7	318.3	109.7	208.64	1.526	
10,800.0	6,911.9	10,694.5	6,802.0	114.4	113.9	-69.81	-641.3	4,056.7	318.5	104.7	213.76	1.490	Level 3
10,900.0	6,911.9	10,794.5	6,801.4	117.2	116.7	-69.71	-641.9	4,156.7	318.6	99.7	218.89	1.456	Level 3
11,000.0	6,911.9	10,894.5	6,800.9	119.9	119.4	-69.62	-642.4	4,256.7	318.8	94.8	224.01	1.423	Level 3
11,100.0	6,912.0	10,994.5	6,800.4	122.7	122.2	-69.52	-643.0	4,356.7	319.0	89.8	229.12	1.392	Level 3
11,200.0	6,912.0	11,094.5	6,799.8	125.5	125.0	-69.42	-643.5	4,456.7	319.1	84.9	234.23	1.362	Level 3
11,300.0	6,912.0	11,194.5	6,799.3	128.3	127.8	-69.33	-644.1	4,556.7	319.3	80.0	239.34	1.334	Level 3
11,349.1	6,912.0	11,243.6	6,799.0	129.6	129.2	-69.28	-644.4	4,605.8	319.4	77.6	241.84	1.321	Level 3, SF

<b>Company:</b>	PETROLEUM DEVELOPMENT CORP Weld County CO	<b>Local Co-ordinate Reference:</b>	Well Maxey 24P-402
<b>Project:</b>	SEC.24-T5N-R65W	<b>TVD Reference:</b>	WELL @ 4652.0ft (RKB - 15')
<b>Reference Site:</b>	Maxey 24O-HZ Pad Sec.24-T5N-R65W	<b>MD Reference:</b>	WELL @ 4652.0ft (RKB - 15')
<b>Site Error:</b>	0.0ft	<b>North Reference:</b>	True
<b>Reference Well:</b>	Maxey 24P-402	<b>Survey Calculation Method:</b>	Minimum Curvature
<b>Well Error:</b>	0.0ft	<b>Output errors are at</b>	2.00 sigma
<b>Reference Wellbore</b>	Wellbore #1	<b>Database:</b>	Landmark
<b>Reference Design:</b>	Plan #2 (8-9-13)	<b>Offset TVD Reference:</b>	Offset Datum

Offset Design													Offset Site Error:	0.0 ft
Survey Program: 100-NS-GYRO-MS													Offset Well Error:	0.0 ft
Reference		Offset		Semi Major Axis		Highside Toolface (°)	Distance		Between Centres (ft)	Between Ellipses (ft)	Minimum Separation (ft)	Separation Factor	Warning	
Measured Depth (ft)	Vertical Depth (ft)	Measured Depth (ft)	Vertical Depth (ft)	Reference (ft)	Offset (ft)		Offset Wellbore Centre +N/-S (ft)	+E/-W (ft)						
6,800.0	6,667.2	6,657.0	6,655.0	22.7	14.2	1.67	-944.7	1,090.1	970.1	942.5	27.57	35.189		
6,900.0	6,734.5	6,724.4	6,722.4	22.9	14.2	2.47	-948.3	1,089.6	895.8	871.2	24.68	36.292		
7,000.0	6,791.7	6,775.0	6,772.8	23.2	14.2	3.64	-951.2	1,089.5	813.9	792.2	21.65	37.592		
7,100.0	6,837.6	6,800.0	6,797.8	23.7	14.2	5.19	-952.7	1,089.6	725.7	707.0	18.72	38.764		
7,200.0	6,871.5	6,800.0	6,797.8	24.4	14.2	7.01	-952.7	1,089.6	634.0	617.7	16.33	38.837		
7,300.0	6,892.9	6,800.0	6,797.8	25.4	14.2	10.17	-952.7	1,089.6	539.7	524.3	15.39	35.073		
7,400.0	6,904.1	6,800.0	6,797.8	26.8	14.2	11.84	-952.7	1,089.6	444.0	427.9	16.04	27.673		
7,500.0	6,911.0	6,800.0	6,797.8	28.4	14.2	15.04	-952.7	1,089.6	349.0	331.3	17.73	19.686		
7,600.0	6,911.3	6,800.0	6,797.8	30.3	14.2	16.20	-952.7	1,089.6	255.1	236.1	19.05	13.391		
7,700.0	6,911.4	6,800.0	6,797.8	32.4	14.2	16.20	-952.7	1,089.6	168.2	148.4	19.85	8.473		
7,800.0	6,911.4	6,800.0	6,797.8	34.6	14.2	16.20	-952.7	1,089.6	107.2	86.5	20.68	5.183		
7,834.0	6,911.4	6,800.0	6,797.8	35.4	14.2	16.20	-952.7	1,089.6	101.6	80.7	20.97	4.847	CC, ES, SF	
7,900.0	6,911.4	6,800.0	6,797.8	36.9	14.2	16.20	-952.7	1,089.6	121.2	99.6	21.54	5.627		
8,000.0	6,911.4	6,800.0	6,797.8	39.3	14.2	16.20	-952.7	1,089.6	194.6	172.2	22.41	8.684		
8,100.0	6,911.4	6,800.0	6,797.8	41.7	14.2	16.20	-952.7	1,089.6	284.7	261.4	23.31	12.217		
8,200.0	6,911.5	6,800.0	6,797.8	44.2	14.2	16.20	-952.7	1,089.6	379.8	355.6	24.22	15.685		
8,300.0	6,911.5	6,800.0	6,797.8	46.8	14.2	16.20	-952.7	1,089.6	476.9	451.8	25.14	18.971		
8,400.0	6,911.5	6,800.0	6,797.8	49.3	14.2	16.20	-952.7	1,089.6	575.0	549.0	26.08	22.052		
8,500.0	6,911.5	6,800.0	6,797.8	51.9	14.2	16.20	-952.7	1,089.6	673.7	646.7	27.02	24.931		
8,600.0	6,911.5	6,800.0	6,797.8	54.5	14.2	16.20	-952.7	1,089.6	772.7	744.7	27.98	27.619		
8,700.0	6,911.5	6,800.0	6,797.8	57.1	14.2	16.20	-952.7	1,089.6	871.9	843.0	28.94	30.129		
8,800.0	6,911.6	6,800.0	6,797.8	59.8	14.2	16.20	-952.7	1,089.6	971.3	941.4	29.91	32.474		

Reference Depths are relative to WELL @ 4652.0ft (RKB - 15')	Coordinates are relative to: Maxey 24P-402
Offset Depths are relative to Offset Datum	Coordinate System is US State Plane 1983, Colorado Northern Zone
Central Meridian is -105.500000 °	Grid Convergence at Surface is: 0.57°



<b>Company:</b>	PETROLEUM DEVELOPMENT CORP Weld County CO	<b>Local Co-ordinate Reference:</b>	Well Maxey 24P-402
<b>Project:</b>	SEC.24-T5N-R65W	<b>TVD Reference:</b>	WELL @ 4652.0ft (RKB - 15')
<b>Reference Site:</b>	Maxey 24O-HZ Pad Sec.24-T5N-R65W	<b>MD Reference:</b>	WELL @ 4652.0ft (RKB - 15')
<b>Site Error:</b>	0.0ft	<b>North Reference:</b>	True
<b>Reference Well:</b>	Maxey 24P-402	<b>Survey Calculation Method:</b>	Minimum Curvature
<b>Well Error:</b>	0.0ft	<b>Output errors are at</b>	2.00 sigma
<b>Reference Wellbore</b>	Wellbore #1	<b>Database:</b>	Landmark
<b>Reference Design:</b>	Plan #2 (8-9-13)	<b>Offset TVD Reference:</b>	Offset Datum

Reference Depths are relative to WELL @ 4652.0ft (RKB - 15')  
Offset Depths are relative to Offset Datum  
Central Meridian is -105.500000 °

Coordinates are relative to: Maxey 24P-402  
Coordinate System is US State Plane 1983, Colorado Northern Zone  
Grid Convergence at Surface is: 0.57°

