

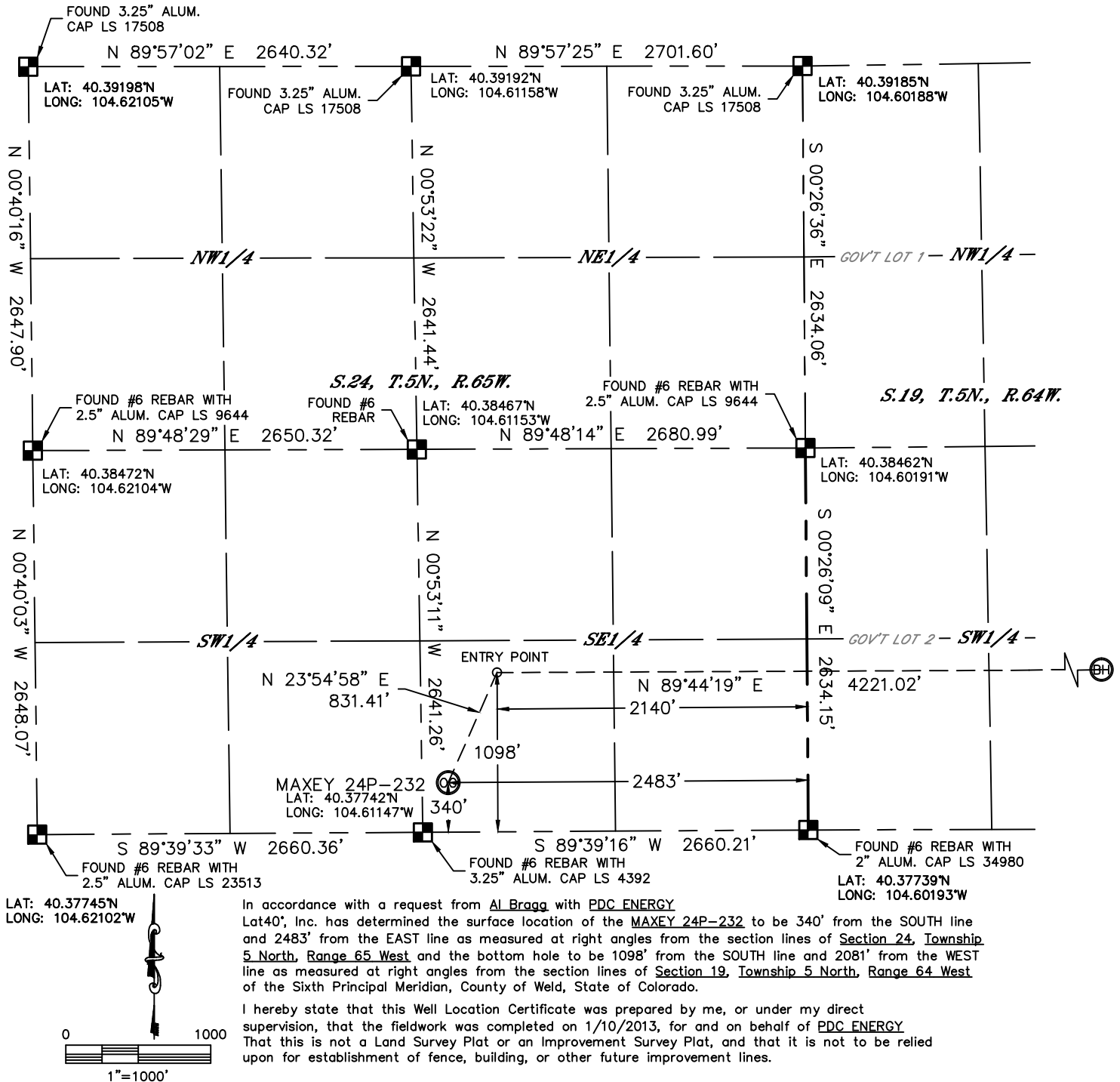


Lat40°, Inc. 1635 Foxtrail Drive, Suite 325 Loveland, CO 970-776-3321

# WELL LOCATION CERTIFICATE

THIS MAP DOES NOT REPRESENT A BOUNDARY SURVEY

SECTION: 24  
TOWNSHIP: 5N  
RANGE: 65W



#### NOTE:

- 1) Bearings shown are Grid Bearings of the Colorado State Plane Coordinate System, North Zone, North American Datum 1983/2007. The lineal dimensions as contained herein are based upon the "U.S. Survey Foot."
- 2) Ground elevations are based on an observed GPS elevation (NAVD 1988 DATUM).
- 3) IMPROVEMENTS: See LOCATION DRAWING for all visible improvements within 400' of disturbed area.
- 4) SURFACE USE: CROPLAND
- 5) INSTRUMENT OPERATOR: BRIAN ROTTINGHAUS

#### NOTE

According to Colorado law, you must commence any legal action based upon any defect in this W.L.C. within three years after you discover such defect. In no event, may any action based upon any defect in this survey be commenced more than ten years after the date of the certificate shown hereon. (13-80-105 C.R.S.)

#### LEGEND

- = ALIQUOT MONUMENT AS DESCRIBED
- = CALCULATED POSITION

#### SURFACE LOCATION

LAT: 40.37835°N  
LONG: 104.61084°W  
PDOP: 1.9  
ELEV: 4635'  
1/4, 1/4: SW1/4SE1/4  
NEAREST PROPERTY LINE: 180' WEST

#### ENTRY POINT

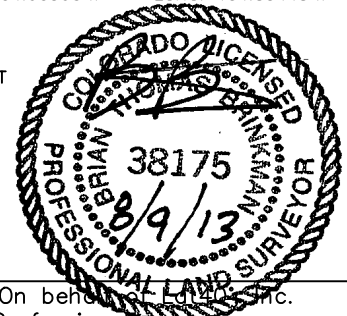
LAT: 40.38043°N  
LONG: 104.60960°W

#### BOTTOM HOLE

LAT: 40.38036°N  
LONG: 104.59445°W

#### SHEET 1 OF 2

Brian T. Brinkman—On behalf of Lat40°, Inc.  
Colorado Licensed Professional  
Land Surveyor No. 38175  
DATE: rev 8/9/2013  
PROJECT#: 2013003



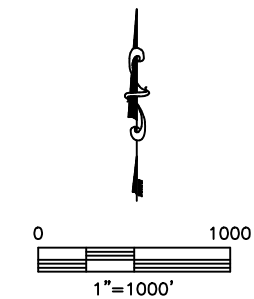
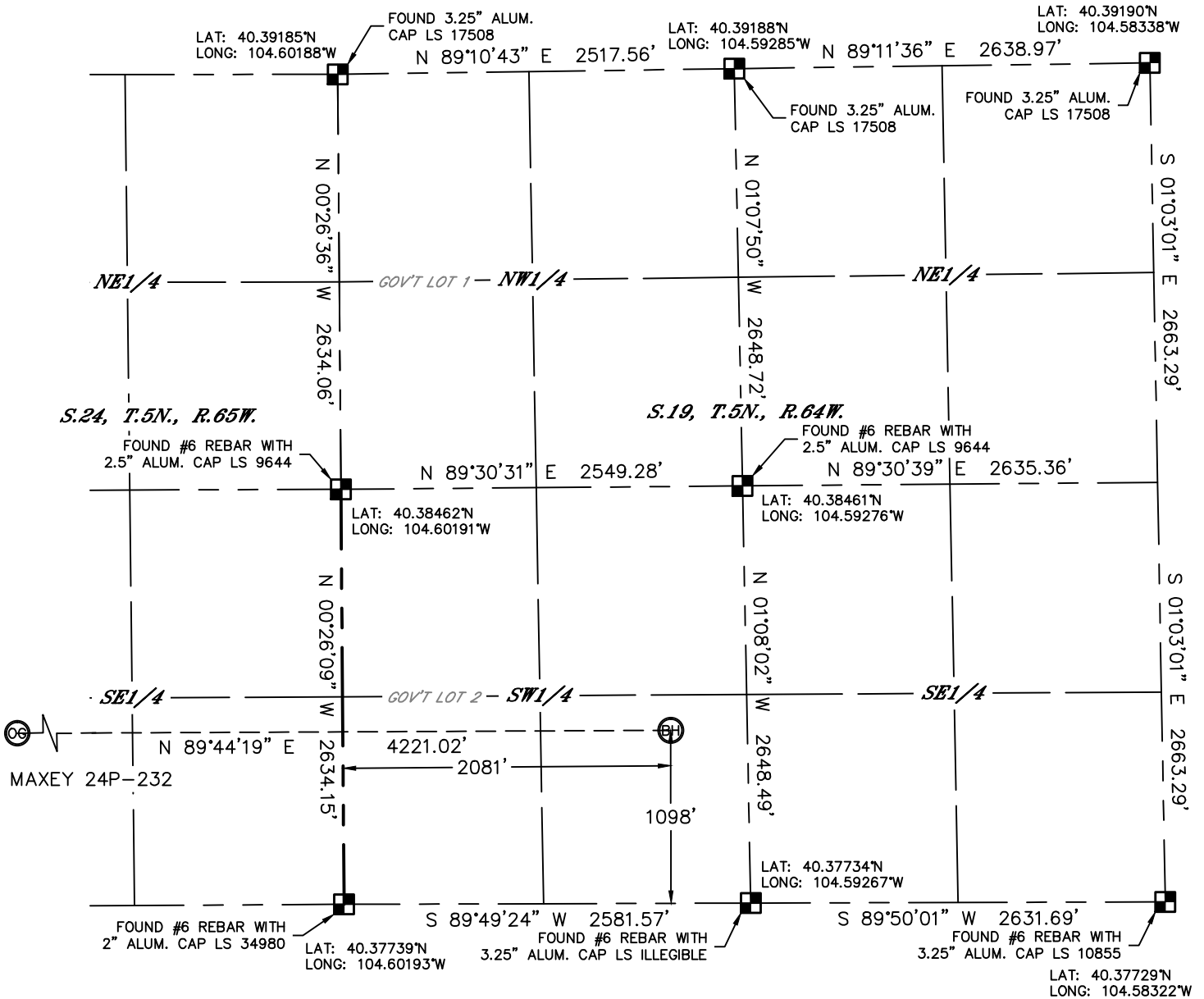


Lat40°, Inc. 1635 Foxtrail Drive, Suite 325 Loveland, CO 970-776-3321

# WELL LOCATION CERTIFICATE

THIS MAP DOES NOT REPRESENT A BOUNDARY SURVEY

SECTION: 24  
TOWNSHIP: 5N  
RANGE: 65W



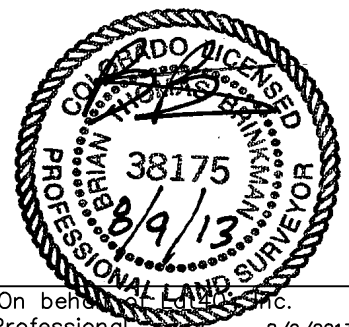
**NOTE**  
According to Colorado law, you must commence any legal action based upon any defect in this W.L.C. within three years after you discover such defect. In no event, may any action based upon any defect in this survey be commenced more than ten years after the date of the certificate shown hereon. (13-80-105 C.R.S.)

## LEGEND

- = ALIQUOT MONUMENT AS DESCRIBED
- = CALCULATED POSITION

## SHEET 2 OF 2

Brian T. Brinkman—On behalf of Lat40°, Inc.  
Colorado Licensed Professional  
Land Surveyor No. 38175  
DATE: rev 8/9/2013  
PROJECT#: 2013003



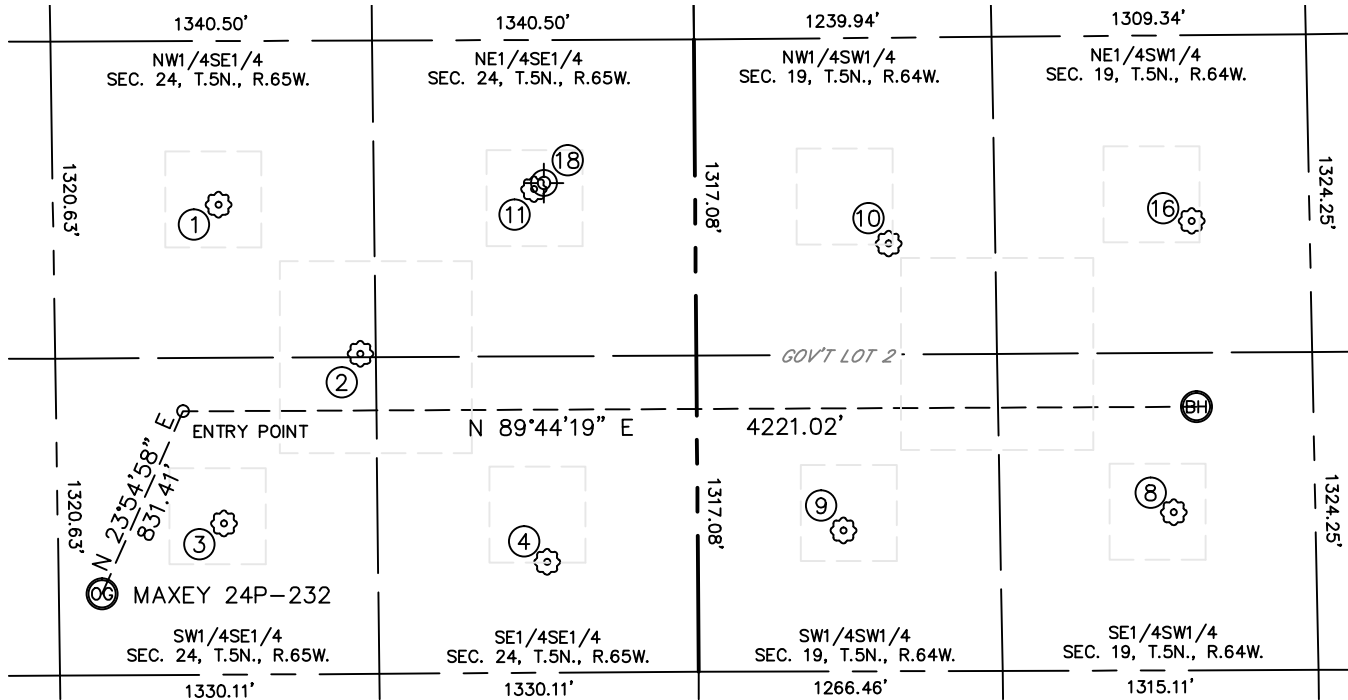


Lat40°, Inc. 1635 Foxtrail Drive, Suite 325 Loveland, CO 970-776-3321

# SITE SKETCH

MAXEY 24P-232

SECTION: 24  
TOWNSHIP: 5N  
RANGE: 65W



①

MAXEY 33-24  
NW1/4SE1/4  
1958' FSL  
1986' FEL  
LAT-40.38278°N  
LONG-104.60904°W  
PDOP: 1.8  
ELEV: 4636'

②

MAXEY 24D  
NW1/4SE1/4  
1333' FSL  
1399' FEL  
LAT-40.38106°N  
LONG-104.60694°W  
PDOP: 1.8  
ELEV: 4636'

③

MAXEY 2  
SW1/4SE1/4  
629' FSL  
1973' FEL  
LAT-40.37914°N  
LONG-104.60900°W  
PDOP: 1.8  
ELEV: 4635'

④

MAXEY 44-24  
SE1/4SE1/4  
461' FSL  
628' FEL  
LAT-40.37866°N  
LONG-104.60418°W  
PDOP: 1.8  
ELEV: 4632'

⑧

EMILY 24-19  
SE1/4SW1/4  
658' FSL  
1983' FWL  
LAT-40.37916°N  
LONG-104.59481°W  
PDOP: 2.1  
ELEV: 4629'

⑨

MAXEY HOFF 1  
SW1/4SW1/4  
(GOV'T LOT 2)  
587' FSL  
607' FWL  
LAT-40.37899°N  
LONG-104.59975°W  
PDOP: 2.1  
ELEV: 4631'

⑩

MAXEY HOFF 2  
NW1/4SW1/4  
(GOV'T LOT 2)  
1781' FSL  
804' FWL  
LAT-40.38226°N  
LONG-104.59903°W  
PDOP: 2.0  
ELEV: 4631'

⑪

MAXEY 43-24  
NE1/4SE1/4  
2014' FSL  
672' FEL  
LAT-40.38292°N  
LONG-104.60432°W  
PDOP: 2.0  
ELEV: 4635'

⑪

EMILY 1  
NE1/4SW1/4  
1871' FSL  
2067' FWL  
LAT-40.38248°N  
LONG-104.59449°W  
PDOP: 2.9  
ELEV: 4628'

⑪

MAXEY 1  
Plugged & Abandoned  
NE1/4SE1/4  
2040' FSL (COGCC)  
630' FEL (COGCC)  
LAT-40.38295°N (COGCC)  
LONG-104.60417°W (COGCC)  
PDOP: N/A  
ELEV: 4633' (COGCC)



0 800  
1"=800'

DATE: rev 8/9/2013  
PROJECT#: 2013003