

# PETROLEUM DEVELOPMENT CORP Weld County CO

Well Name: **Maxey 24P-332**

Surface Location: Maxey 24Q-HZ Pad Sec.24-T5N-R65W

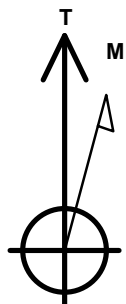
North American Datum 1983 , US State Plane 1983 , Colorado Northern Zone

Ground Elevation: 4635.0

+N/-S	+E/-W	Northing	Easting	Latitude	Longitude	Slot
0.0	0.0	1381915.62	3247745.85	40.378350	-104.610730	
RKB - 15' WELL @ 4650.0ft (RKB - 15')						

## WELLBORE TARGET DETAILS

Name	TVD	+N/-S	+E/-W	Shape
BHL 738'FSL & 2081'FWL, SEC.19	6770.0	372.0	4535.2	Point



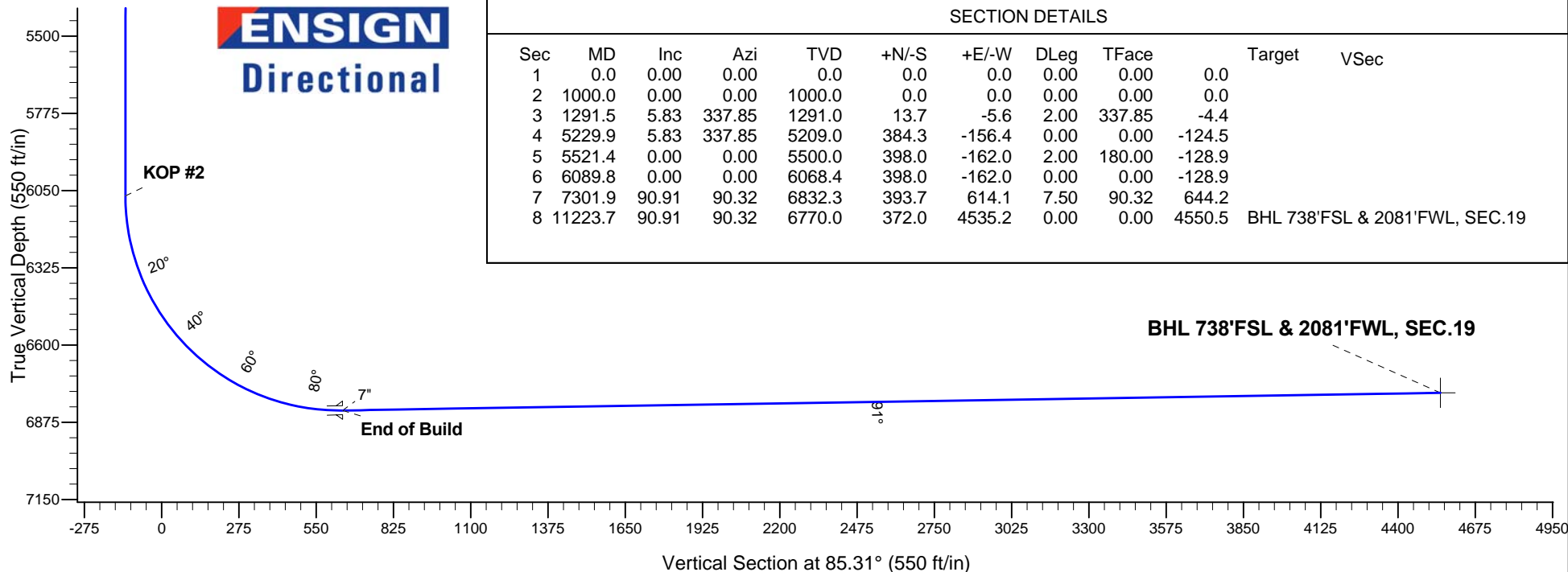
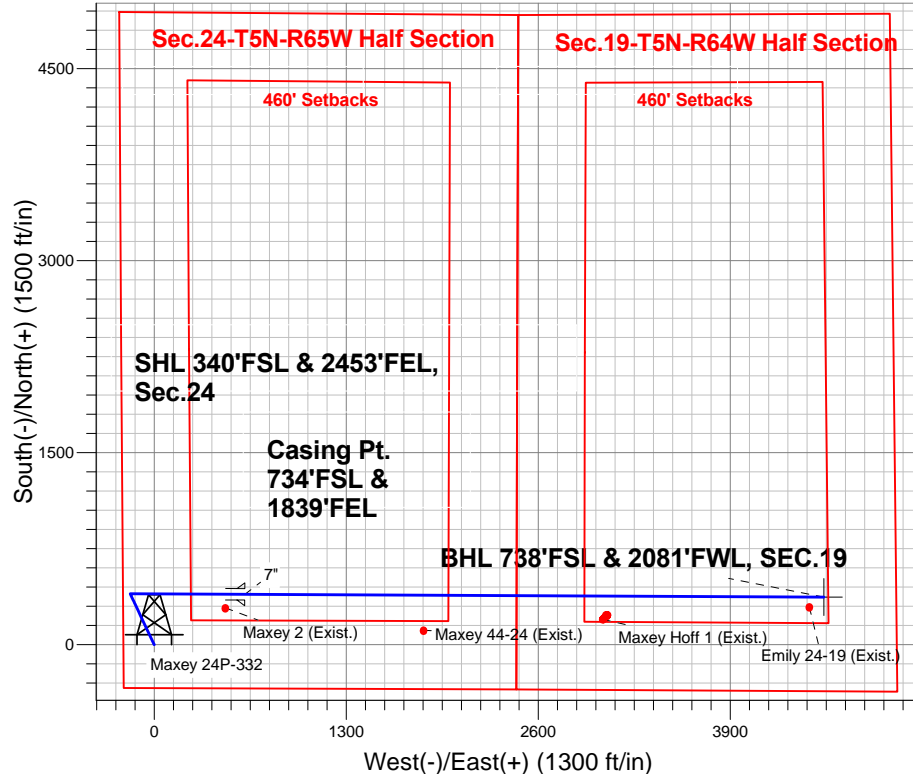
Azimuths to True North  
Magnetic North: 8.49°

Magnetic Field  
Strength: 52911.1snT  
Dip Angle: 66.98°  
Date: 8/9/2013  
Model: IGRF2010

## ANNOTATIONS

TVD	MD	Annotation
1000.0	1000.0	KOP #1
6068.4	6089.8	KOP #2
6832.3	7301.9	End of Build

Maxey 24Q-HZ Pad Sec.24-T5N-R65W  
Maxey 24P-332  
Plan #2 (8-9-13)  
9:07, August 12 2013



## SECTION DETAILS

Sec	MD	Inc	Azi	TVD	+N/-S	+E/-W	DLeg	TFace	Target	VSec
1	0.0	0.00	0.00	0.0	0.0	0.0	0.00	0.00	0.0	
2	1000.0	0.00	0.00	1000.0	0.0	0.0	0.00	0.00	0.0	
3	1291.5	5.83	337.85	1291.0	13.7	-5.6	2.00	337.85	-4.4	
4	5229.9	5.83	337.85	5209.0	384.3	-156.4	0.00	0.00	-124.5	
5	5521.4	0.00	0.00	5500.0	398.0	-162.0	2.00	180.00	-128.9	
6	6089.8	0.00	0.00	6068.4	398.0	-162.0	0.00	0.00	-128.9	
7	7301.9	90.91	90.32	6832.3	393.7	614.1	7.50	90.32	644.2	
8	11223.7	90.91	90.32	6770.0	372.0	4535.2	0.00	0.00	4550.5	BHL 738'FSL & 2081'FWL, SEC.19



# **PETROLEUM DEVELOPMENT CORP Weld County CO**

**SEC.24-T5N-R65W**

**Maxey 24Q-HZ Pad Sec.24-T5N-R65W**

**Maxey 24P-332**

**Wellbore #1**

**Plan: Plan #2 (8-9-13)**

## **Standard Planning Report**

**12 August, 2013**

<b>Database:</b>	Landmark	<b>Local Co-ordinate Reference:</b>	Well Maxey 24P-332
<b>Company:</b>	PETROLEUM DEVELOPMENT CORP Weld County CO	<b>TVD Reference:</b>	WELL @ 4650.0ft (RKB - 15')
<b>Project:</b>	SEC.24-T5N-R65W	<b>MD Reference:</b>	WELL @ 4650.0ft (RKB - 15')
<b>Site:</b>	Maxey 24Q-HZ Pad Sec.24-T5N-R65W	<b>North Reference:</b>	True
<b>Well:</b>	Maxey 24P-332	<b>Survey Calculation Method:</b>	Minimum Curvature
<b>Wellbore:</b>	Wellbore #1		
<b>Design:</b>	Plan #2 (8-9-13)		

<b>Project</b>	SEC.24-T5N-R65W, Weld County, Colorado		
<b>Map System:</b>	US State Plane 1983	<b>System Datum:</b>	Mean Sea Level
<b>Geo Datum:</b>	North American Datum 1983		Using Well Reference Point
<b>Map Zone:</b>	Colorado Northern Zone		Using geodetic scale factor

Site						Maxey 24Q-HZ Pad Sec.24-T5N-R65W											
<b>Site Position:</b>						<b>Northing:</b>			1,381,915.64 ft			<b>Latitude:</b>			40.378350		
<b>From:</b>			Lat/Long			<b>Easting:</b>			3,247,745.85 ft			<b>Longitude:</b>			-104.610730		
<b>Position Uncertainty:</b>			0.0 ft			<b>Slot Radius:</b>			"			<b>Grid Convergence:</b>			0.57 °		

Well	Maxey 24P-332					
Well Position	+N/-S	0.0 ft	Northing:	1,381,915.62 ft	Latitude:	40.378350
	+E/-W	0.0 ft	Easting:	3,247,745.85 ft	Longitude:	-104.610730
Position Uncertainty		0.0 ft	Wellhead Elevation:	ft	Ground Level:	4,635.0 ft

<b>Wellbore</b>	Wellbore #1				
<b>Magnetics</b>	<b>Model Name</b>	<b>Sample Date</b>	<b>Declination (°)</b>	<b>Dip Angle (°)</b>	<b>Field Strength (nT)</b>
	IGRF2010	8/9/2013	8.49	66.98	52,911

<b>Design</b>	Plan #2 (8-9-13)			
<b>Audit Notes:</b>				
<b>Version:</b>	<b>Phase:</b>	PROTOTYPE	<b>Tie On Depth:</b>	0.0
<b>Vertical Section:</b>	<b>Depth From (TVD) (ft)</b>	<b>+N/-S (ft)</b>	<b>+E/-W (ft)</b>	<b>Direction (°)</b>
	0.0	0.0	0.0	85.31

<b>Plan Sections</b>										
Measured Depth (ft)	Inclination (°)	Azimuth (°)	Vertical Depth (ft)	+N/-S (ft)	+E/-W (ft)	Dogleg Rate (°/100ft)	Build Rate (°/100ft)	Turn Rate (°/100ft)	TFO (°)	Target
0.0	0.00	0.00	0.0	0.0	0.0	0.00	0.00	0.00	0.00	
1,000.0	0.00	0.00	1,000.0	0.0	0.0	0.00	0.00	0.00	0.00	
1,291.5	5.83	337.85	1,291.0	13.7	-5.6	2.00	2.00	0.00	337.85	
5,229.9	5.83	337.85	5,209.0	384.3	-156.4	0.00	0.00	0.00	0.00	
5,521.4	0.00	0.00	5,500.0	398.0	-162.0	2.00	-2.00	0.00	180.00	
6,089.8	0.00	0.00	6,068.4	398.0	-162.0	0.00	0.00	0.00	0.00	
7,301.9	90.91	90.32	6,832.3	393.7	614.1	7.50	7.50	0.00	90.32	
11,223.7	90.91	90.32	6,770.0	372.0	4,535.2	0.00	0.00	0.00	0.00	BHL 738'FSL & 20E

<b>Database:</b>	Landmark	<b>Local Co-ordinate Reference:</b>	Well Maxey 24P-332
<b>Company:</b>	PETROLEUM DEVELOPMENT CORP Weld County CO	<b>TVD Reference:</b>	WELL @ 4650.0ft (RKB - 15')
<b>Project:</b>	SEC.24-T5N-R65W	<b>MD Reference:</b>	WELL @ 4650.0ft (RKB - 15')
<b>Site:</b>	Maxey 24Q-HZ Pad Sec.24-T5N-R65W	<b>North Reference:</b>	True
<b>Well:</b>	Maxey 24P-332	<b>Survey Calculation Method:</b>	Minimum Curvature
<b>Wellbore:</b>	Wellbore #1		
<b>Design:</b>	Plan #2 (8-9-13)		

Planned Survey									
Measured Depth (ft)	Inclination (°)	Azimuth (°)	Vertical Depth (ft)	+N/-S (ft)	+E/-W (ft)	Vertical Section (ft)	Dogleg Rate (°/100ft)	Build Rate (°/100ft)	Turn Rate (°/100ft)
0.0	0.00	0.00	0.0	0.0	0.0	0.0	0.00	0.00	0.00
100.0	0.00	0.00	100.0	0.0	0.0	0.0	0.00	0.00	0.00
200.0	0.00	0.00	200.0	0.0	0.0	0.0	0.00	0.00	0.00
300.0	0.00	0.00	300.0	0.0	0.0	0.0	0.00	0.00	0.00
400.0	0.00	0.00	400.0	0.0	0.0	0.0	0.00	0.00	0.00
500.0	0.00	0.00	500.0	0.0	0.0	0.0	0.00	0.00	0.00
600.0	0.00	0.00	600.0	0.0	0.0	0.0	0.00	0.00	0.00
700.0	0.00	0.00	700.0	0.0	0.0	0.0	0.00	0.00	0.00
800.0	0.00	0.00	800.0	0.0	0.0	0.0	0.00	0.00	0.00
900.0	0.00	0.00	900.0	0.0	0.0	0.0	0.00	0.00	0.00
1,000.0	0.00	0.00	1,000.0	0.0	0.0	0.0	0.00	0.00	0.00
<b>KOP #1</b>									
1,100.0	2.00	337.85	1,100.0	1.6	-0.7	-0.5	2.00	2.00	0.00
1,200.0	4.00	337.85	1,199.8	6.5	-2.6	-2.1	2.00	2.00	0.00
1,291.5	5.83	337.85	1,291.0	13.7	-5.6	-4.4	2.00	2.00	0.00
1,300.0	5.83	337.85	1,299.5	14.5	-5.9	-4.7	0.00	0.00	0.00
1,400.0	5.83	337.85	1,398.9	23.9	-9.7	-7.8	0.00	0.00	0.00
1,500.0	5.83	337.85	1,498.4	33.3	-13.6	-10.8	0.00	0.00	0.00
1,600.0	5.83	337.85	1,597.9	42.8	-17.4	-13.8	0.00	0.00	0.00
1,700.0	5.83	337.85	1,697.4	52.2	-21.2	-16.9	0.00	0.00	0.00
1,800.0	5.83	337.85	1,796.9	61.6	-25.1	-19.9	0.00	0.00	0.00
1,900.0	5.83	337.85	1,896.3	71.0	-28.9	-23.0	0.00	0.00	0.00
2,000.0	5.83	337.85	1,995.8	80.4	-32.7	-26.0	0.00	0.00	0.00
2,100.0	5.83	337.85	2,095.3	89.8	-36.5	-29.1	0.00	0.00	0.00
2,200.0	5.83	337.85	2,194.8	99.2	-40.4	-32.1	0.00	0.00	0.00
2,300.0	5.83	337.85	2,294.3	108.6	-44.2	-35.2	0.00	0.00	0.00
2,400.0	5.83	337.85	2,393.8	118.0	-48.0	-38.2	0.00	0.00	0.00
2,500.0	5.83	337.85	2,493.2	127.4	-51.9	-41.3	0.00	0.00	0.00
2,600.0	5.83	337.85	2,592.7	136.8	-55.7	-44.3	0.00	0.00	0.00
2,700.0	5.83	337.85	2,692.2	146.2	-59.5	-47.4	0.00	0.00	0.00
2,800.0	5.83	337.85	2,791.7	155.7	-63.4	-50.4	0.00	0.00	0.00
2,900.0	5.83	337.85	2,891.2	165.1	-67.2	-53.5	0.00	0.00	0.00
3,000.0	5.83	337.85	2,990.7	174.5	-71.0	-56.5	0.00	0.00	0.00
3,100.0	5.83	337.85	3,090.1	183.9	-74.8	-59.6	0.00	0.00	0.00
3,200.0	5.83	337.85	3,189.6	193.3	-78.7	-62.6	0.00	0.00	0.00
3,300.0	5.83	337.85	3,289.1	202.7	-82.5	-65.7	0.00	0.00	0.00
3,400.0	5.83	337.85	3,388.6	212.1	-86.3	-68.7	0.00	0.00	0.00
3,500.0	5.83	337.85	3,488.1	221.5	-90.2	-71.8	0.00	0.00	0.00
3,600.0	5.83	337.85	3,587.6	230.9	-94.0	-74.8	0.00	0.00	0.00
3,700.0	5.83	337.85	3,687.0	240.3	-97.8	-77.8	0.00	0.00	0.00
3,800.0	5.83	337.85	3,786.5	249.7	-101.7	-80.9	0.00	0.00	0.00
3,900.0	5.83	337.85	3,886.0	259.2	-105.5	-83.9	0.00	0.00	0.00
4,000.0	5.83	337.85	3,985.5	268.6	-109.3	-87.0	0.00	0.00	0.00
4,100.0	5.83	337.85	4,085.0	278.0	-113.1	-90.0	0.00	0.00	0.00
4,200.0	5.83	337.85	4,184.5	287.4	-117.0	-93.1	0.00	0.00	0.00
4,300.0	5.83	337.85	4,283.9	296.8	-120.8	-96.1	0.00	0.00	0.00
4,400.0	5.83	337.85	4,383.4	306.2	-124.6	-99.2	0.00	0.00	0.00
4,500.0	5.83	337.85	4,482.9	315.6	-128.5	-102.2	0.00	0.00	0.00
4,600.0	5.83	337.85	4,582.4	325.0	-132.3	-105.3	0.00	0.00	0.00
4,700.0	5.83	337.85	4,681.9	334.4	-136.1	-108.3	0.00	0.00	0.00
4,800.0	5.83	337.85	4,781.3	343.8	-140.0	-111.4	0.00	0.00	0.00
4,900.0	5.83	337.85	4,880.8	353.2	-143.8	-114.4	0.00	0.00	0.00
5,000.0	5.83	337.85	4,980.3	362.6	-147.6	-117.5	0.00	0.00	0.00

<b>Database:</b>	Landmark	<b>Local Co-ordinate Reference:</b>	Well Maxey 24P-332
<b>Company:</b>	PETROLEUM DEVELOPMENT CORP Weld County CO	<b>TVD Reference:</b>	WELL @ 4650.0ft (RKB - 15')
<b>Project:</b>	SEC.24-T5N-R65W	<b>MD Reference:</b>	WELL @ 4650.0ft (RKB - 15')
<b>Site:</b>	Maxey 24Q-HZ Pad Sec.24-T5N-R65W	<b>North Reference:</b>	True
<b>Well:</b>	Maxey 24P-332	<b>Survey Calculation Method:</b>	Minimum Curvature
<b>Wellbore:</b>	Wellbore #1		
<b>Design:</b>	Plan #2 (8-9-13)		

Planned Survey									
Measured Depth (ft)	Inclination (°)	Azimuth (°)	Vertical Depth (ft)	+N/-S (ft)	+E/-W (ft)	Vertical Section (ft)	Dogleg Rate (°/100ft)	Build Rate (°/100ft)	Turn Rate (°/100ft)
5,100.0	5.83	337.85	5,079.8	372.1	-151.4	-120.5	0.00	0.00	0.00
5,200.0	5.83	337.85	5,179.3	381.5	-155.3	-123.6	0.00	0.00	0.00
5,229.9	5.83	337.85	5,209.0	384.3	-156.4	-124.5	0.00	0.00	0.00
5,300.0	4.43	337.85	5,278.8	390.1	-158.8	-126.4	2.00	-2.00	0.00
5,400.0	2.43	337.85	5,378.7	395.6	-161.0	-128.1	2.00	-2.00	0.00
5,500.0	0.43	337.85	5,478.6	397.9	-162.0	-128.9	2.00	-2.00	0.00
5,521.4	0.00	0.00	5,500.0	398.0	-162.0	-128.9	2.00	-2.00	0.00
5,600.0	0.00	0.00	5,578.6	398.0	-162.0	-128.9	0.00	0.00	0.00
5,700.0	0.00	0.00	5,678.6	398.0	-162.0	-128.9	0.00	0.00	0.00
5,800.0	0.00	0.00	5,778.6	398.0	-162.0	-128.9	0.00	0.00	0.00
5,900.0	0.00	0.00	5,878.6	398.0	-162.0	-128.9	0.00	0.00	0.00
6,000.0	0.00	0.00	5,978.6	398.0	-162.0	-128.9	0.00	0.00	0.00
6,089.8	0.00	0.00	6,068.4	398.0	-162.0	-128.9	0.00	0.00	0.00
KOP #2									
6,100.0	0.76	90.32	6,078.6	398.0	-161.9	-128.8	7.49	7.49	0.00
6,200.0	8.26	90.32	6,178.2	398.0	-154.1	-121.0	7.50	7.50	0.00
6,300.0	15.76	90.32	6,276.0	397.8	-133.3	-100.3	7.50	7.50	0.00
6,400.0	23.26	90.32	6,370.2	397.7	-99.9	-67.0	7.50	7.50	0.00
6,500.0	30.76	90.32	6,459.2	397.4	-54.5	-21.8	7.50	7.50	0.00
6,600.0	38.26	90.32	6,541.5	397.1	2.1	34.6	7.50	7.50	0.00
6,700.0	45.76	90.32	6,615.8	396.7	69.0	101.2	7.50	7.50	0.00
6,800.0	53.26	90.32	6,680.7	396.3	145.0	176.9	7.50	7.50	0.00
6,900.0	60.76	90.32	6,735.1	395.8	228.8	260.4	7.50	7.50	0.00
7,000.0	68.26	90.32	6,778.1	395.3	319.0	350.3	7.50	7.50	0.00
7,100.0	75.76	90.32	6,808.9	394.8	414.1	445.0	7.50	7.50	0.00
7,200.0	83.26	90.32	6,827.1	394.3	512.3	542.8	7.50	7.50	0.00
7,300.0	90.76	90.32	6,832.3	393.7	612.1	642.3	7.50	7.50	0.00
7,301.9	90.91	90.32	6,832.3	393.7	614.0	644.2	7.50	7.50	0.00
End of Build - 7"									
7,400.0	90.91	90.32	6,830.7	393.2	712.1	741.9	0.00	0.00	0.00
7,500.0	90.91	90.32	6,829.1	392.6	812.1	841.5	0.00	0.00	0.00
7,600.0	90.91	90.32	6,827.6	392.1	912.1	941.1	0.00	0.00	0.00
7,700.0	90.91	90.32	6,826.0	391.5	1,012.1	1,040.7	0.00	0.00	0.00
7,800.0	90.91	90.32	6,824.4	391.0	1,112.0	1,140.3	0.00	0.00	0.00
7,900.0	90.91	90.32	6,822.8	390.4	1,212.0	1,239.9	0.00	0.00	0.00
8,000.0	90.91	90.32	6,821.2	389.9	1,312.0	1,339.5	0.00	0.00	0.00
8,100.0	90.91	90.32	6,819.6	389.3	1,412.0	1,439.1	0.00	0.00	0.00
8,200.0	90.91	90.32	6,818.0	388.8	1,512.0	1,538.7	0.00	0.00	0.00
8,300.0	90.91	90.32	6,816.4	388.2	1,612.0	1,638.3	0.00	0.00	0.00
8,400.0	90.91	90.32	6,814.8	387.6	1,712.0	1,737.9	0.00	0.00	0.00
8,500.0	90.91	90.32	6,813.3	387.1	1,811.9	1,837.5	0.00	0.00	0.00
8,600.0	90.91	90.32	6,811.7	386.5	1,911.9	1,937.1	0.00	0.00	0.00
8,700.0	90.91	90.32	6,810.1	386.0	2,011.9	2,036.7	0.00	0.00	0.00
8,800.0	90.91	90.32	6,808.5	385.4	2,111.9	2,136.3	0.00	0.00	0.00
8,900.0	90.91	90.32	6,806.9	384.9	2,211.9	2,236.0	0.00	0.00	0.00
9,000.0	90.91	90.32	6,805.3	384.3	2,311.9	2,335.6	0.00	0.00	0.00
9,100.0	90.91	90.32	6,803.7	383.8	2,411.9	2,435.2	0.00	0.00	0.00
9,200.0	90.91	90.32	6,802.1	383.2	2,511.8	2,534.8	0.00	0.00	0.00
9,300.0	90.91	90.32	6,800.6	382.7	2,611.8	2,634.4	0.00	0.00	0.00
9,400.0	90.91	90.32	6,799.0	382.1	2,711.8	2,734.0	0.00	0.00	0.00
9,500.0	90.91	90.32	6,797.4	381.6	2,811.8	2,833.6	0.00	0.00	0.00
9,600.0	90.91	90.32	6,795.8	381.0	2,911.8	2,933.2	0.00	0.00	0.00
9,700.0	90.91	90.32	6,794.2	380.5	3,011.8	3,032.8	0.00	0.00	0.00

<b>Database:</b>	Landmark	<b>Local Co-ordinate Reference:</b>	Well Maxey 24P-332
<b>Company:</b>	PETROLEUM DEVELOPMENT CORP Weld County CO	<b>TVD Reference:</b>	WELL @ 4650.0ft (RKB - 15')
<b>Project:</b>	SEC.24-T5N-R65W	<b>MD Reference:</b>	WELL @ 4650.0ft (RKB - 15')
<b>Site:</b>	Maxey 24Q-HZ Pad Sec.24-T5N-R65W	<b>North Reference:</b>	True
<b>Well:</b>	Maxey 24P-332	<b>Survey Calculation Method:</b>	Minimum Curvature
<b>Wellbore:</b>	Wellbore #1		
<b>Design:</b>	Plan #2 (8-9-13)		

## Planned Survey

Measured Depth (ft)	Inclination (°)	Azimuth (°)	Vertical Depth (ft)	+N/-S (ft)	+E/-W (ft)	Vertical Section (ft)	Dogleg Rate (°/100ft)	Build Rate (°/100ft)	Turn Rate (°/100ft)
9,800.0	90.91	90.32	6,792.6	379.9	3,111.8	3,132.4	0.00	0.00	0.00
9,900.0	90.91	90.32	6,791.0	379.4	3,211.7	3,232.0	0.00	0.00	0.00
10,000.0	90.91	90.32	6,789.4	378.8	3,311.7	3,331.6	0.00	0.00	0.00
10,100.0	90.91	90.32	6,787.8	378.3	3,411.7	3,431.2	0.00	0.00	0.00
10,200.0	90.91	90.32	6,786.3	377.7	3,511.7	3,530.8	0.00	0.00	0.00
10,300.0	90.91	90.32	6,784.7	377.1	3,611.7	3,630.4	0.00	0.00	0.00
10,400.0	90.91	90.32	6,783.1	376.6	3,711.7	3,730.0	0.00	0.00	0.00
10,500.0	90.91	90.32	6,781.5	376.0	3,811.7	3,829.6	0.00	0.00	0.00
10,600.0	90.91	90.32	6,779.9	375.5	3,911.7	3,929.3	0.00	0.00	0.00
10,700.0	90.91	90.32	6,778.3	374.9	4,011.6	4,028.9	0.00	0.00	0.00
10,800.0	90.91	90.32	6,776.7	374.4	4,111.6	4,128.5	0.00	0.00	0.00
10,900.0	90.91	90.32	6,775.1	373.8	4,211.6	4,228.1	0.00	0.00	0.00
11,000.0	90.91	90.32	6,773.6	373.3	4,311.6	4,327.7	0.00	0.00	0.00
11,100.0	90.91	90.32	6,772.0	372.7	4,411.6	4,427.3	0.00	0.00	0.00
11,200.0	90.91	90.32	6,770.4	372.2	4,511.6	4,526.9	0.00	0.00	0.00
11,223.7	90.91	90.32	6,770.0	372.0	4,535.2	4,550.5	0.00	0.00	0.00

BHL 738'FSL & 2081'FWL, SEC.19

## Casing Points

Measured Depth (ft)	Vertical Depth (ft)	Name	Casing Diameter (")	Hole Diameter (")
7,301.9	6,832.3	7"	7	7-1/2

## Plan Annotations

Measured Depth (ft)	Vertical Depth (ft)	Local Coordinates +N/-S (ft)	+E/-W (ft)	Comment
1,000.0	1,000.0	0.0	0.0	KOP #1
6,089.8	6,068.4	398.0	-162.0	KOP #2
7,301.9	6,832.3	393.7	614.0	End of Build



# **PETROLEUM DEVELOPMENT CORP Weld County CO**

**SEC.24-T5N-R65W**

**Maxey 24Q-HZ Pad Sec.24-T5N-R65W**

**Maxey 24P-332**

**Wellbore #1**

**Plan #2 (8-9-13)**

## **Anticollision Report**

**12 August, 2013**



<b>Company:</b>	PETROLEUM DEVELOPMENT CORP Weld County CO	<b>Local Co-ordinate Reference:</b>	Well Maxey 24P-332
<b>Project:</b>	SEC.24-T5N-R65W	<b>TVD Reference:</b>	WELL @ 4650.0ft (RKB - 15')
<b>Reference Site:</b>	Maxey 24Q-HZ Pad Sec.24-T5N-R65W	<b>MD Reference:</b>	WELL @ 4650.0ft (RKB - 15')
<b>Site Error:</b>	0.0ft	<b>North Reference:</b>	True
<b>Reference Well:</b>	Maxey 24P-332	<b>Survey Calculation Method:</b>	Minimum Curvature
<b>Well Error:</b>	0.0ft	<b>Output errors are at</b>	2.00 sigma
<b>Reference Wellbore</b>	Wellbore #1	<b>Database:</b>	Landmark
<b>Reference Design:</b>	Plan #2 (8-9-13)	<b>Offset TVD Reference:</b>	Offset Datum

<b>Reference</b>	Plan #2 (8-9-13)
<b>Filter type:</b>	NO GLOBAL FILTER: Using user defined selection & filtering criteria
<b>Interpolation Method:</b>	MD Interval 100.0ft
<b>Depth Range:</b>	Unlimited
<b>Results Limited by:</b>	Maximum center-center distance of 1,000.0ft
<b>Warning Levels Evaluated at:</b>	2.00 Sigma
<b>Error Model:</b>	ISCWSA
<b>Scan Method:</b>	Closest Approach 3D
<b>Error Surface:</b>	Elliptical Conic

Survey Tool Program		Date	8/9/2013		
From (ft)	To (ft)	Survey (Wellbore)	Tool Name	Description	
0.0	11,223.7	Plan #2 (8-9-13) (Wellbore #1)	MWD	MWD - Standard	

Summary						
Site Name	Reference Measured Depth (ft)	Offset Measured Depth (ft)	Distance Between Centres (ft)	Distance Between Ellipses (ft)	Separation Factor	Warning
Offset Well - Wellbore - Design						
Maxey 24Q-HZ Pad Sec.24-T5N-R65W						
Emily 24-19 (Exist.) - Wellbore #1 - Wellbore #1	11,124.3	6,750.6	77.1	-56.2	0.578	Level 1, CC, ES, SF
Maxey 2 (Exist.) - Wellbore #1 - Wellbore #1	7,170.0	6,808.0	106.6	78.0	3.724	CC, ES, SF
Maxey 24P-232 - Wellbore #1 - Plan #2 (8-9-13)	200.0	200.0	30.6	30.0	45.451	CC
Maxey 24P-232 - Wellbore #1 - Plan #2 (8-9-13)	300.0	299.8	31.0	29.9	27.592	ES
Maxey 24P-232 - Wellbore #1 - Plan #2 (8-9-13)	11,223.7	11,176.8	363.3	107.2	1.419	Level 3, SF
Maxey 24Q-112 - Wellbore #1 - Plan #2 (8-9-13)	1,000.0	1,000.0	30.6	26.4	7.176	CC, ES
Maxey 24Q-112 - Wellbore #1 - Plan #2 (8-9-13)	11,223.7	11,004.8	369.3	140.1	1.611	SF
Maxey 24Q-302 - Wellbore #1 - Plan #2 (8-9-13)	1,000.0	1,000.0	61.3	57.0	14.353	CC, ES
Maxey 24Q-302 - Wellbore #1 - Plan #2 (8-9-13)	11,223.7	11,211.0	659.4	403.3	2.574	SF
Maxey 44-24 (Exist.) - Wellbore #1 - Wellbore #1	8,514.5	6,795.0	274.0	212.5	4.458	CC, ES, SF
Maxey Hoff 1 (Exist.) - Wellbore #1 - Wellbore #1	9,725.8	6,777.4	181.6	82.3	1.830	CC, ES, SF

<b>Offset Design</b>	Maxey 24Q-HZ Pad Sec.24-T5N-R65W - Emily 24-19 (Exist.) - Wellbore #1 - Wellbore #1										<b>Offset Site Error:</b>	0.0ft
<b>Survey Program:</b>	7300-MWD										<b>Offset Well Error:</b>	0.0ft
Reference	Offset	Semi Major Axis		Distance		Minimum Separation		Warning				
Measured Depth (ft)	Vertical Depth (ft)	Measured Depth (ft)	Vertical Depth (ft)	Reference (ft)	Offset (ft)	Highside Toolface (°)	Offset Wellbore Centre +N/-S (ft)	+E/-W (ft)	Between Centres (ft)	Between Ellipses (ft)	Separation (ft)	Factor
10,200.0	6,786.3	6,765.3	6,765.3	100.1	7.6	100.78	295.5	4,435.4	927.4	821.2	106.21	8.731
10,300.0	6,784.7	6,763.7	6,763.7	102.9	7.6	99.64	295.5	4,435.4	827.8	718.5	109.25	7.577
10,400.0	6,783.1	6,762.1	6,762.1	105.7	7.6	98.49	295.5	4,435.4	728.3	616.0	112.28	6.486
10,500.0	6,781.5	6,760.5	6,760.5	108.4	7.6	97.33	295.5	4,435.4	629.0	513.7	115.28	5.456
10,600.0	6,779.9	6,758.9	6,758.9	111.2	7.6	96.16	295.5	4,435.4	529.9	411.6	118.26	4.480
10,700.0	6,778.3	6,757.3	6,757.3	114.0	7.6	94.99	295.5	4,435.4	431.2	310.0	121.21	3.557
10,800.0	6,776.7	6,755.7	6,755.7	116.8	7.6	93.82	295.5	4,435.4	333.3	209.2	124.13	2.685
10,900.0	6,775.1	6,754.1	6,754.1	119.5	7.6	92.65	295.5	4,435.4	237.1	110.1	127.01	1.867
11,000.0	6,773.6	6,752.6	6,752.6	122.3	7.6	91.47	295.5	4,435.4	146.2	16.4	129.85	1.126 Level 2
11,100.0	6,772.0	6,751.0	6,751.0	125.1	7.6	90.29	295.5	4,435.4	80.8	-51.8	132.64	0.609 Level 1
11,124.3	6,771.6	6,750.6	6,750.6	125.8	7.6	90.00	295.5	4,435.4	77.1	-56.2	133.31	0.578 Level 1, CC, ES, SF
11,200.0	6,770.4	6,749.4	6,749.4	127.9	7.6	89.11	295.5	4,435.4	108.0	-27.3	135.39	0.798 Level 1
11,223.7	6,770.0	6,749.0	6,749.0	128.6	7.6	88.83	295.5	4,435.4	125.8	-10.3	136.03	0.925 Level 1



<b>Company:</b>	PETROLEUM DEVELOPMENT CORP Weld County CO	<b>Local Co-ordinate Reference:</b>	Well Maxey 24P-332
<b>Project:</b>	SEC.24-T5N-R65W	<b>TVD Reference:</b>	WELL @ 4650.0ft (RKB - 15')
<b>Reference Site:</b>	Maxey 24Q-HZ Pad Sec.24-T5N-R65W	<b>MD Reference:</b>	WELL @ 4650.0ft (RKB - 15')
<b>Site Error:</b>	0.0ft	<b>North Reference:</b>	True
<b>Reference Well:</b>	Maxey 24P-332	<b>Survey Calculation Method:</b>	Minimum Curvature
<b>Well Error:</b>	0.0ft	<b>Output errors are at</b>	2.00 sigma
<b>Reference Wellbore</b>	Wellbore #1	<b>Database:</b>	Landmark
<b>Reference Design:</b>	Plan #2 (8-9-13)	<b>Offset TVD Reference:</b>	Offset Datum

Offset Design													Offset Site Error:	0.0 ft
Survey Program: 7300-MWD													Offset Well Error:	0.0 ft
Reference		Offset		Semi Major Axis		Highside Toolface (°)	Distance		Between Centres (ft)	Between Ellipses (ft)	Minimum Separation (ft)	Separation Factor	Warning	
Measured Depth (ft)	Vertical Depth (ft)	Measured Depth (ft)	Vertical Depth (ft)	Reference (ft)	Offset (ft)		Offset Wellbore Centre +N/-S (ft)	+E/-W (ft)						
0.0	0.0	0.0	0.0	0.0	0.0	59.16	287.8	482.0	561.6					
100.0	100.0	85.0	85.0	0.1	0.1	59.16	287.8	482.0	561.4	561.2	0.21	2,697.609		
200.0	200.0	185.0	185.0	0.3	0.2	59.16	287.8	482.0	561.4	560.8	0.55	1,029.595		
300.0	300.0	285.0	285.0	0.6	0.3	59.16	287.8	482.0	561.4	560.5	0.88	636.208		
400.0	400.0	385.0	385.0	0.8	0.4	59.16	287.8	482.0	561.4	560.2	1.22	460.327		
500.0	500.0	485.0	485.0	1.0	0.5	59.16	287.8	482.0	561.4	559.8	1.56	360.630		
600.0	600.0	585.0	585.0	1.2	0.7	59.16	287.8	482.0	561.4	559.5	1.89	296.429		
700.0	700.0	685.0	685.0	1.5	0.8	59.16	287.8	482.0	561.4	559.2	2.23	251.633		
800.0	800.0	785.0	785.0	1.7	0.9	59.16	287.8	482.0	561.4	558.8	2.57	218.598		
900.0	900.0	885.0	885.0	1.9	1.0	59.16	287.8	482.0	561.4	558.5	2.91	193.231		
1,000.0	1,000.0	985.0	985.0	2.1	1.1	59.16	287.8	482.0	561.4	558.1	3.24	173.139		
1,100.0	1,100.0	1,085.0	1,085.0	2.4	1.2	81.49	287.8	482.0	561.1	557.5	3.58	156.825		
1,200.0	1,199.8	1,184.8	1,184.8	2.6	1.3	82.03	287.8	482.0	560.4	556.5	3.91	143.171		
1,300.0	1,299.5	1,284.5	1,284.5	2.8	1.4	82.93	287.8	482.0	559.2	555.0	4.26	131.366		
1,400.0	1,398.9	1,383.9	1,383.9	3.1	1.6	83.96	287.8	482.0	558.1	553.5	4.61	121.042		
1,500.0	1,498.4	1,483.4	1,483.4	3.3	1.7	84.99	287.8	482.0	557.1	552.1	4.97	112.047		
1,600.0	1,597.9	1,582.9	1,582.9	3.6	1.8	86.03	287.8	482.0	556.3	550.9	5.34	104.183		
1,700.0	1,697.4	1,682.4	1,682.4	3.8	1.9	87.07	287.8	482.0	555.7	550.0	5.71	97.281		
1,800.0	1,796.9	1,781.9	1,781.9	4.1	2.0	88.11	287.8	482.0	555.2	549.2	6.09	91.194		
1,900.0	1,896.3	1,881.3	1,881.3	4.4	2.1	89.15	287.8	482.0	555.0	548.5	6.47	85.803		
1,981.1	1,977.1	1,962.1	1,962.1	4.6	2.2	90.00	287.8	482.0	554.9	548.2	6.78	81.867		
2,000.0	1,995.8	1,980.8	1,980.8	4.6	2.2	90.20	287.8	482.0	554.9	548.1	6.85	81.006		
2,100.0	2,095.3	2,080.3	2,080.3	4.9	2.3	91.24	287.8	482.0	555.1	547.8	7.23	76.721		
2,200.0	2,194.8	2,179.8	2,179.8	5.2	2.4	92.28	287.8	482.0	555.4	547.8	7.62	72.878		
2,300.0	2,294.3	2,279.3	2,279.3	5.5	2.6	93.32	287.8	482.0	555.9	547.9	8.01	69.417		
2,400.0	2,393.8	2,378.8	2,378.8	5.7	2.7	94.36	287.8	482.0	556.6	548.2	8.40	66.291		
2,500.0	2,493.2	2,478.2	2,478.2	6.0	2.8	95.40	287.8	482.0	557.4	548.6	8.78	63.458		
2,600.0	2,592.7	2,577.7	2,577.7	6.3	2.9	96.43	287.8	482.0	558.5	549.3	9.17	60.882		
2,700.0	2,692.2	2,677.2	2,677.2	6.6	3.0	97.46	287.8	482.0	559.7	550.2	9.56	58.534		
2,800.0	2,791.7	2,776.7	2,776.7	6.9	3.1	98.48	287.8	482.0	561.1	551.2	9.95	56.388		
2,900.0	2,891.2	2,876.2	2,876.2	7.1	3.2	99.50	287.8	482.0	562.7	552.4	10.34	54.421		
3,000.0	2,990.7	2,975.7	2,975.7	7.4	3.3	100.51	287.8	482.0	564.5	553.8	10.73	52.616		
3,100.0	3,090.1	3,075.1	3,075.1	7.7	3.5	101.52	287.8	482.0	566.5	555.3	11.12	50.955		
3,200.0	3,189.6	3,174.6	3,174.6	8.0	3.6	102.51	287.8	482.0	568.6	557.1	11.50	49.423		
3,300.0	3,289.1	3,274.1	3,274.1	8.3	3.7	103.51	287.8	482.0	570.9	559.0	11.89	48.009		
3,400.0	3,388.6	3,373.6	3,373.6	8.6	3.8	104.49	287.8	482.0	573.3	561.1	12.28	46.701		
3,500.0	3,488.1	3,473.1	3,473.1	8.8	3.9	105.46	287.8	482.0	576.0	563.3	12.66	45.489		
3,600.0	3,587.6	3,572.6	3,572.6	9.1	4.0	106.43	287.8	482.0	578.8	565.7	13.05	44.364		
3,700.0	3,687.0	3,672.0	3,672.0	9.4	4.1	107.38	287.8	482.0	581.8	568.3	13.43	43.320		
3,800.0	3,786.5	3,771.5	3,771.5	9.7	4.2	108.33	287.8	482.0	584.9	571.1	13.81	42.348		
3,900.0	3,886.0	3,871.0	3,871.0	10.0	4.4	109.26	287.8	482.0	588.2	574.0	14.19	41.443		
4,000.0	3,985.5	3,970.5	3,970.5	10.3	4.5	110.19	287.8	482.0	591.6	577.0	14.57	40.599		
4,100.0	4,085.0	4,070.0	4,070.0	10.6	4.6	111.10	287.8	482.0	595.2	580.3	14.95	39.811		
4,200.0	4,184.5	4,169.5	4,169.5	10.9	4.7	112.00	287.8	482.0	599.0	583.6	15.33	39.076		
4,300.0	4,283.9	4,268.9	4,268.9	11.1	4.8	112.89	287.8	482.0	602.9	587.2	15.70	38.388		
4,400.0	4,383.4	4,368.4	4,368.4	11.4	4.9	113.77	287.8	482.0	606.9	590.8	16.08	37.744		
4,500.0	4,482.9	4,467.9	4,467.9	11.7	5.0	114.64	287.8	482.0	611.1	594.6	16.45	37.141		
4,600.0	4,582.4	4,567.4	4,567.4	12.0	5.1	115.50	287.8	482.0	615.4	598.6	16.83	36.575		
4,700.0	4,681.9	4,666.9	4,666.9	12.3	5.2	116.34	287.8	482.0	619.9	602.7	17.20	36.045		
4,800.0	4,781.3	4,766.3	4,766.3	12.6	5.4	117.17	287.8	482.0	624.5	606.9	17.57	35.547		
4,900.0	4,880.8	4,865.8	4,865.8	12.9	5.5	117.99	287.8	482.0	629.2	611.2	17.94	35.079		

CC - Min centre to center distance or convergent point, SF - min separation factor, ES - min ellipse separation

<b>Company:</b>	PETROLEUM DEVELOPMENT CORP Weld County CO	<b>Local Co-ordinate Reference:</b>	Well Maxey 24P-332
<b>Project:</b>	SEC.24-T5N-R65W	<b>TVD Reference:</b>	WELL @ 4650.0ft (RKB - 15')
<b>Reference Site:</b>	Maxey 24Q-HZ Pad Sec.24-T5N-R65W	<b>MD Reference:</b>	WELL @ 4650.0ft (RKB - 15')
<b>Site Error:</b>	0.0ft	<b>North Reference:</b>	True
<b>Reference Well:</b>	Maxey 24P-332	<b>Survey Calculation Method:</b>	Minimum Curvature
<b>Well Error:</b>	0.0ft	<b>Output errors are at</b>	2.00 sigma
<b>Reference Wellbore</b>	Wellbore #1	<b>Database:</b>	Landmark
<b>Reference Design:</b>	Plan #2 (8-9-13)	<b>Offset TVD Reference:</b>	Offset Datum

<b>Offset Design</b> Maxey 24Q-HZ Pad Sec.24-T5N-R65W - Maxey 2 (Exist.) - Wellbore #1 - Wellbore #1												<b>Offset Site Error:</b>	0.0 ft
Survey Program: 7300-MWD												<b>Offset Well Error:</b>	0.0 ft
Reference		Offset		Semi Major Axis			Distance						
Measured Depth (ft)	Vertical Depth (ft)	Measured Depth (ft)	Vertical Depth (ft)	Reference (ft)	Offset (ft)	Highside Toolface (°)	Offset Wellbore Centre +N/-S (ft)	+E/-W (ft)	Between Centres (ft)	Between Ellipses (ft)	Minimum Separation (ft)	Separation Factor	Warning
5,000.0	4,980.3	4,965.3	4,965.3	13.2	5.6	118.80	287.8	482.0	634.0	615.7	18.30	34.640	
5,100.0	5,079.8	5,064.8	5,064.8	13.5	5.7	119.59	287.8	482.0	639.0	620.3	18.67	34.226	
5,200.0	5,179.3	5,164.3	5,164.3	13.7	5.8	120.38	287.8	482.0	644.1	625.1	19.04	33.837	
5,300.0	5,278.8	5,263.8	5,263.8	14.0	5.9	121.14	287.8	482.0	648.9	629.5	19.38	33.489	
5,400.0	5,378.7	5,363.7	5,363.7	14.2	6.0	121.64	287.8	482.0	652.0	632.3	19.66	33.158	
5,500.0	5,478.6	5,463.6	5,463.6	14.4	6.1	121.85	287.8	482.0	653.3	633.4	19.93	32.774	
5,600.0	5,578.6	5,563.6	5,563.6	14.5	6.3	99.71	287.8	482.0	653.3	633.9	19.48	33.539	
5,700.0	5,678.6	5,663.6	5,663.6	14.7	6.4	99.71	287.8	482.0	653.3	633.5	19.80	32.998	
5,800.0	5,778.6	5,763.6	5,763.6	14.9	6.5	99.71	287.8	482.0	653.3	633.2	20.12	32.473	
5,900.0	5,878.6	5,863.6	5,863.6	15.1	6.6	99.71	287.8	482.0	653.3	632.9	20.44	31.963	
6,000.0	5,978.6	5,963.6	5,963.6	15.3	6.7	99.71	287.8	482.0	653.3	632.6	20.76	31.468	
6,100.0	6,078.6	6,063.6	6,063.6	15.5	6.8	9.39	287.8	482.0	653.3	631.5	21.74	30.050	
6,200.0	6,178.2	6,163.2	6,163.2	15.6	6.9	9.60	287.8	482.0	645.5	623.7	21.84	29.551	
6,300.0	6,276.0	6,261.0	6,261.0	15.7	7.0	10.20	287.8	482.0	625.0	603.3	21.73	28.759	
6,400.0	6,370.2	6,355.2	6,355.2	15.8	7.1	11.27	287.8	482.0	592.2	570.7	21.42	27.646	
6,500.0	6,459.2	6,444.2	6,444.2	15.9	7.2	13.01	287.8	482.0	547.6	526.6	20.93	26.159	
6,600.0	6,541.5	6,526.5	6,526.5	16.0	7.3	15.78	287.8	482.0	492.2	471.8	20.34	24.201	
6,700.0	6,615.8	6,600.8	6,600.8	16.1	7.4	20.28	287.8	482.0	427.1	407.3	19.78	21.594	
6,800.0	6,680.7	6,665.7	6,665.7	16.4	7.5	27.83	287.8	482.0	354.0	334.4	19.64	18.029	
6,900.0	6,735.1	6,720.1	6,720.1	17.2	7.6	40.70	287.8	482.0	275.3	254.5	20.76	13.259	
7,000.0	6,778.1	6,763.1	6,763.1	18.4	7.6	60.40	287.8	482.0	195.2	171.4	23.81	8.200	
7,100.0	6,808.9	6,793.9	6,793.9	20.0	7.6	81.02	287.8	482.0	126.7	99.7	27.04	4.686	
7,170.0	6,823.0	6,808.0	6,808.0	21.2	7.7	90.00	287.8	482.0	106.6	78.0	28.63	3.724 CC, ES, SF	
7,200.0	6,827.1	6,812.1	6,812.1	21.8	7.7	91.87	287.8	482.0	110.7	81.5	29.20	3.791	
7,300.0	6,832.3	6,817.3	6,817.3	23.8	7.7	89.07	287.8	482.0	167.8	136.6	31.16	5.384	
7,400.0	6,830.7	6,815.7	6,815.7	25.9	7.7	88.04	287.8	482.0	253.1	219.8	33.26	7.608	
7,500.0	6,829.1	6,814.1	6,814.1	28.1	7.7	87.19	287.8	482.0	346.3	310.8	35.48	9.760	
7,600.0	6,827.6	6,812.6	6,812.6	30.5	7.7	86.34	287.8	482.0	442.5	404.7	37.79	11.711	
7,700.0	6,826.0	6,811.0	6,811.0	32.9	7.7	85.49	287.8	482.0	540.1	500.0	40.15	13.451	
7,800.0	6,824.4	6,809.4	6,809.4	35.4	7.7	84.64	287.8	482.0	638.4	595.9	42.57	14.998	
7,900.0	6,822.8	6,807.8	6,807.8	37.9	7.7	83.80	287.8	482.0	737.2	692.2	45.01	16.377	
8,000.0	6,821.2	6,806.2	6,806.2	40.4	7.6	82.96	287.8	482.0	836.3	788.8	47.48	17.612	
8,100.0	6,819.6	6,804.6	6,804.6	43.0	7.6	82.12	287.8	482.0	935.5	885.6	49.97	18.723	

<b>Company:</b>	PETROLEUM DEVELOPMENT CORP Weld County CO	<b>Local Co-ordinate Reference:</b>	Well Maxey 24P-332
<b>Project:</b>	SEC.24-T5N-R65W	<b>TVD Reference:</b>	WELL @ 4650.0ft (RKB - 15')
<b>Reference Site:</b>	Maxey 24Q-HZ Pad Sec.24-T5N-R65W	<b>MD Reference:</b>	WELL @ 4650.0ft (RKB - 15')
<b>Site Error:</b>	0.0ft	<b>North Reference:</b>	True
<b>Reference Well:</b>	Maxey 24P-332	<b>Survey Calculation Method:</b>	Minimum Curvature
<b>Well Error:</b>	0.0ft	<b>Output errors are at</b>	2.00 sigma
<b>Reference Wellbore</b>	Wellbore #1	<b>Database:</b>	Landmark
<b>Reference Design:</b>	Plan #2 (8-9-13)	<b>Offset TVD Reference:</b>	Offset Datum

Offset Design Maxey 24Q-HZ Pad Sec.24-T5N-R65W - Maxey 24P-232 - Wellbore #1 - Plan #2 (8-9-13)													Offset Site Error:	0.0 ft
Survey Program: 0-MWDD													Offset Well Error:	0.0 ft
Measured Depth (ft)	Vertical Depth (ft)	Measured Depth (ft)	Vertical Depth (ft)	Reference	Offset	Semi Major Axis	Highside Toolface (°)	Offset Wellbore Centre +N/-S (ft)	+E/-W (ft)	Distance Between Centres (ft)	Between Ellipses (ft)	Minimum Separation (ft)	Separation Factor	Warning
0.0	0.0	0.0	0.0	0.0	0.0	-90.05	-90.05	0.0	-30.6	30.6				
100.0	100.0	100.0	100.0	0.1	0.1	-90.05	-90.05	0.0	-30.6	30.6	30.4	0.22	136.352	
200.0	200.0	200.0	200.0	0.3	0.3	-90.05	-90.05	0.0	-30.6	30.6	30.0	0.67	45.451 CC	
300.0	300.0	299.8	299.7	0.6	0.6	-86.89	-86.89	1.7	-31.0	31.0	29.9	1.12	27.592 ES	
400.0	400.0	399.3	399.1	0.8	0.8	-77.97	-77.97	6.8	-31.9	32.6	31.0	1.58	20.630	
500.0	500.0	498.3	497.8	1.0	1.0	-65.48	-65.48	15.2	-33.4	36.8	34.8	2.05	17.975	
600.0	600.0	596.7	595.4	1.2	1.3	-52.84	-52.84	27.0	-35.6	44.9	42.3	2.52	17.823	
700.0	700.0	694.8	692.4	1.5	1.6	-42.58	-42.58	41.6	-38.2	57.0	54.0	2.99	19.093	
800.0	800.0	793.6	789.9	1.7	2.0	-35.80	-35.80	56.8	-41.0	70.8	67.4	3.44	20.587	
900.0	900.0	892.3	887.5	1.9	2.3	-31.27	-31.27	72.1	-43.8	85.3	81.4	3.90	21.873	
1,000.0	1,000.0	991.1	985.0	2.1	2.7	-28.06	-28.06	87.3	-46.6	100.1	95.7	4.36	22.944	
1,100.0	1,100.0	1,090.1	1,082.8	2.4	3.0	-3.56	-3.56	102.6	-49.3	113.4	108.6	4.85	23.379	
1,200.0	1,199.8	1,189.5	1,181.0	2.6	3.4	-1.77	-1.77	118.0	-52.1	123.5	118.2	5.31	23.244	
1,300.0	1,299.5	1,289.2	1,279.5	2.8	3.7	-0.26	-0.26	133.4	-54.9	130.1	124.4	5.77	22.546	
1,400.0	1,398.9	1,389.1	1,378.0	3.1	4.1	1.11	1.11	148.8	-57.7	135.4	129.2	6.24	21.691	
1,500.0	1,498.4	1,488.9	1,476.6	3.3	4.4	2.38	2.38	164.2	-60.5	140.8	134.0	6.71	20.963	
1,600.0	1,597.9	1,588.7	1,575.2	3.6	4.8	3.55	3.55	179.6	-63.4	146.2	139.0	7.19	20.335	
1,700.0	1,697.4	1,688.5	1,673.8	3.8	5.2	4.64	4.64	195.0	-66.2	151.6	144.0	7.66	19.788	
1,800.0	1,796.9	1,788.3	1,772.3	4.1	5.5	5.66	5.66	210.5	-69.0	157.2	149.0	8.14	19.307	
1,900.0	1,896.3	1,888.1	1,870.9	4.4	5.9	6.60	6.60	225.9	-71.8	162.7	154.1	8.62	18.882	
2,000.0	1,995.8	1,987.9	1,969.5	4.6	6.2	7.48	7.48	241.3	-74.6	168.3	159.2	9.10	18.502	
2,100.0	2,095.3	2,087.7	2,068.1	4.9	6.6	8.31	8.31	256.7	-77.4	174.0	164.4	9.58	18.162	
2,200.0	2,194.8	2,187.5	2,166.6	5.2	7.0	9.08	9.08	272.1	-80.2	179.7	169.6	10.06	17.854	
2,300.0	2,294.3	2,287.3	2,265.2	5.5	7.3	9.81	9.81	287.5	-83.0	185.4	174.8	10.55	17.576	
2,400.0	2,393.8	2,387.2	2,363.8	5.7	7.7	10.49	10.49	302.9	-85.8	191.1	180.1	11.03	17.322	
2,500.0	2,493.2	2,487.0	2,462.3	6.0	8.1	11.13	11.13	318.4	-88.6	196.9	185.4	11.52	17.089	
2,600.0	2,592.7	2,586.8	2,560.9	6.3	8.4	11.74	11.74	333.8	-91.4	202.7	190.7	12.01	16.876	
2,700.0	2,692.2	2,686.6	2,659.5	6.6	8.8	12.31	12.31	349.2	-94.2	208.5	196.0	12.50	16.679	
2,800.0	2,791.7	2,786.4	2,758.1	6.9	9.2	12.85	12.85	364.6	-97.0	214.3	201.3	12.99	16.497	
2,900.0	2,891.2	2,886.2	2,856.6	7.1	9.5	13.36	13.36	380.0	-99.8	220.1	206.7	13.48	16.328	
3,000.0	2,990.7	2,986.0	2,955.2	7.4	9.9	13.85	13.85	395.4	-102.6	226.0	212.0	13.98	16.171	
3,100.0	3,090.1	3,085.8	3,053.8	7.7	10.2	14.31	14.31	410.8	-105.4	231.9	217.4	14.47	16.024	
3,200.0	3,189.6	3,185.6	3,152.4	8.0	10.6	14.75	14.75	426.3	-108.3	237.8	222.8	14.97	15.887	
3,300.0	3,289.1	3,285.4	3,250.9	8.3	11.0	15.17	15.17	441.7	-111.1	243.7	228.2	15.46	15.759	
3,400.0	3,388.6	3,385.3	3,349.5	8.6	11.3	15.56	15.56	457.1	-113.9	249.6	233.6	15.96	15.638	
3,500.0	3,488.1	3,485.1	3,448.1	8.8	11.7	15.94	15.94	472.5	-116.7	255.5	239.1	16.46	15.525	
3,600.0	3,587.6	3,584.9	3,546.6	9.1	12.1	16.31	16.31	487.9	-119.5	261.5	244.5	16.96	15.418	
3,700.0	3,687.0	3,684.7	3,645.2	9.4	12.4	16.65	16.65	503.3	-122.3	267.4	250.0	17.46	15.317	
3,800.0	3,786.5	3,784.5	3,743.8	9.7	12.8	16.98	16.98	518.7	-125.1	273.4	255.4	17.96	15.222	
3,900.0	3,886.0	3,884.3	3,842.4	10.0	13.2	17.30	17.30	534.2	-127.9	279.3	260.9	18.46	15.131	
4,000.0	3,985.5	3,984.1	3,940.9	10.3	13.5	17.60	17.60	549.6	-130.7	285.3	266.4	18.96	15.046	
4,100.0	4,085.0	4,083.9	4,039.5	10.6	13.9	17.89	17.89	565.0	-133.5	291.3	271.8	19.47	14.964	
4,200.0	4,184.5	4,183.7	4,138.1	10.9	14.3	18.17	18.17	580.4	-136.3	297.3	277.3	19.97	14.887	
4,300.0	4,283.9	4,283.5	4,236.7	11.1	14.6	18.44	18.44	595.8	-139.1	303.3	282.8	20.47	14.813	
4,400.0	4,383.4	4,383.4	4,335.2	11.4	15.0	18.70	18.70	611.2	-141.9	309.3	288.3	20.98	14.743	
4,500.0	4,482.9	4,483.2	4,433.8	11.7	15.3	18.95	18.95	626.6	-144.7	315.3	293.8	21.48	14.676	
4,600.0	4,582.4	4,583.0	4,532.4	12.0	15.7	19.18	19.18	642.0	-147.5	321.3	299.3	21.99	14.612	
4,700.0	4,681.9	4,682.8	4,630.9	12.3	16.1	19.41	19.41	657.5	-150.3	327.3	304.8	22.50	14.551	
4,800.0	4,781.3	4,782.6	4,729.5	12.6	16.4	19.64	19.64	672.9	-153.2	333.4	310.4	23.00	14.492	
4,900.0	4,880.8	4,882.4	4,828.1	12.9	16.8	19.85	19.85	688.3	-156.0	339.4	315.9	23.51	14.436	
5,000.0	4,980.3	4,982.2	4,926.7	13.2	17.2	20.06	20.06	703.7	-158.8	345.4	321.4	24.02	14.382	

CC - Min centre to center distance or convergent point, SF - min separation factor, ES - min ellipse separation

<b>Company:</b>	PETROLEUM DEVELOPMENT CORP Weld County CO	<b>Local Co-ordinate Reference:</b>	Well Maxey 24P-332
<b>Project:</b>	SEC.24-T5N-R65W	<b>TVD Reference:</b>	WELL @ 4650.0ft (RKB - 15')
<b>Reference Site:</b>	Maxey 24Q-HZ Pad Sec.24-T5N-R65W	<b>MD Reference:</b>	WELL @ 4650.0ft (RKB - 15')
<b>Site Error:</b>	0.0ft	<b>North Reference:</b>	True
<b>Reference Well:</b>	Maxey 24P-332	<b>Survey Calculation Method:</b>	Minimum Curvature
<b>Well Error:</b>	0.0ft	<b>Output errors are at</b>	2.00 sigma
<b>Reference Wellbore</b>	Wellbore #1	<b>Database:</b>	Landmark
<b>Reference Design:</b>	Plan #2 (8-9-13)	<b>Offset TVD Reference:</b>	Offset Datum

Offset Design Maxey 24Q-HZ Pad Sec.24-T5N-R65W - Maxey 24P-232 - Wellbore #1 - Plan #2 (8-9-13)													Offset Site Error:	0.0 ft
Survey Program: 0-MWD													Offset Well Error:	0.0 ft
Reference	Offset	Semi Major Axis		Distance		Warning								
Measured Depth (ft)	Vertical Depth (ft)	Measured Depth (ft)	Vertical Depth (ft)	Reference (ft)	Offset (ft)	Highside Toolface (°)	Offset Wellbore Centre +N/-S (ft)	+E/-W (ft)	Between Centres (ft)	Between Ellipses (ft)	Minimum Separation (ft)	Separation Factor		
5,100.0	5,079.8	5,082.0	5,025.2	13.5	17.5	20.26	719.1	-161.6	351.5	326.9	24.53	14.330		
5,200.0	5,179.3	5,192.3	5,134.3	13.7	17.9	20.50	734.9	-164.4	356.4	331.4	25.04	14.236		
5,300.0	5,278.8	5,306.3	5,247.7	14.0	18.2	20.80	747.0	-166.7	358.4	332.9	25.47	14.069		
5,400.0	5,378.7	5,420.4	5,361.5	14.2	18.4	21.00	754.7	-168.0	359.5	333.7	25.82	13.925		
5,500.0	5,478.6	5,534.6	5,475.6	14.4	18.6	21.09	757.9	-168.6	360.0	333.9	26.11	13.786		
5,600.0	5,578.6	5,637.6	5,578.6	14.5	18.7	-1.06	758.0	-168.6	360.0	327.2	32.82	10.970		
5,700.0	5,678.6	5,737.6	5,678.6	14.7	18.8	-1.06	758.0	-168.6	360.0	326.9	33.15	10.861		
5,800.0	5,778.6	5,837.6	5,778.6	14.9	19.0	-1.06	758.0	-168.6	360.0	326.6	33.48	10.752		
5,900.0	5,878.6	5,937.6	5,878.6	15.1	19.1	-1.06	758.0	-168.6	360.0	326.2	33.82	10.645		
6,000.0	5,978.6	6,037.6	5,978.6	15.3	19.3	-1.06	758.0	-168.6	360.0	325.9	34.16	10.540		
6,100.0	6,078.6	6,138.1	6,078.9	15.5	19.4	-90.32	757.9	-161.9	359.9	331.4	28.56	12.602		
6,116.3	6,094.9	6,154.4	6,094.9	15.5	19.4	-90.01	757.9	-159.6	359.9	331.3	28.63	12.571		
6,200.0	6,178.2	6,236.9	6,175.7	15.6	19.5	-88.45	757.8	-142.6	360.1	331.1	28.98	12.424		
6,300.0	6,276.0	6,334.3	6,267.8	15.7	19.6	-86.62	757.7	-111.5	360.6	331.2	29.36	12.282		
6,400.0	6,370.2	6,430.2	6,354.1	15.8	19.6	-84.86	757.4	-69.6	361.4	331.7	29.71	12.163		
6,500.0	6,459.2	6,525.0	6,433.5	15.9	19.7	-83.21	757.2	-17.9	362.5	332.4	30.11	12.040		
6,600.0	6,541.5	6,618.6	6,505.0	16.0	19.8	-81.68	756.8	42.4	363.8	333.2	30.66	11.866		
6,700.0	6,615.8	6,711.2	6,568.0	16.1	20.0	-80.30	756.5	110.2	365.2	333.8	31.49	11.600		
6,800.0	6,680.7	6,803.0	6,621.9	16.4	20.2	-79.08	756.1	184.4	366.7	333.9	32.73	11.203		
6,900.0	6,735.1	6,894.1	6,666.2	17.2	20.6	-78.04	755.7	263.9	368.0	333.5	34.52	10.661		
7,000.0	6,778.1	6,984.5	6,700.5	18.4	21.3	-77.19	755.2	347.5	369.2	332.3	36.91	10.003		
7,100.0	6,808.9	7,074.5	6,724.6	20.0	22.3	-76.54	754.7	434.2	370.2	330.3	39.88	9.283		
7,200.0	6,827.1	7,164.2	6,738.4	21.8	23.7	-76.10	754.3	522.7	370.9	327.6	43.35	8.557		
7,300.0	6,832.3	7,255.2	6,741.7	23.8	25.4	-75.88	753.8	613.7	371.3	324.0	47.24	7.859		
7,400.0	6,830.7	7,355.2	6,741.3	25.9	27.4	-76.06	753.2	713.7	371.0	319.6	51.42	7.214		
7,500.0	6,829.1	7,455.2	6,740.9	28.1	29.5	-76.24	752.7	813.7	370.7	314.9	55.83	6.641		
7,600.0	6,827.6	7,555.2	6,740.5	30.5	31.8	-76.42	752.2	913.7	370.5	310.1	60.41	6.132		
7,700.0	6,826.0	7,655.2	6,740.1	32.9	34.1	-76.60	751.6	1,013.6	370.2	305.1	65.15	5.683		
7,800.0	6,824.4	7,755.2	6,739.7	35.4	36.6	-76.77	751.1	1,113.6	369.9	299.9	70.00	5.285		
7,900.0	6,822.8	7,855.2	6,739.3	37.9	39.0	-76.95	750.6	1,213.6	369.7	294.7	74.95	4.933		
8,000.0	6,821.2	7,955.2	6,738.9	40.4	41.5	-77.13	750.0	1,313.6	369.4	289.5	79.98	4.619		
8,100.0	6,819.6	8,055.2	6,738.5	43.0	44.1	-77.31	749.5	1,413.6	369.2	284.1	85.08	4.339		
8,200.0	6,818.0	8,155.2	6,738.1	45.6	46.7	-77.49	748.9	1,513.6	368.9	278.7	90.24	4.089		
8,300.0	6,816.4	8,255.2	6,737.7	48.3	49.3	-77.68	748.4	1,613.6	368.7	273.3	95.44	3.863		
8,400.0	6,814.8	8,355.2	6,737.3	50.9	51.9	-77.86	747.9	1,713.6	368.5	267.8	100.69	3.660		
8,500.0	6,813.3	8,455.2	6,736.9	53.6	54.5	-78.04	747.3	1,813.6	368.2	262.3	105.97	3.475		
8,600.0	6,811.7	8,555.1	6,736.5	56.3	57.2	-78.22	746.8	1,913.6	368.0	256.7	111.29	3.307		
8,700.0	6,810.1	8,655.1	6,736.1	58.9	59.9	-78.40	746.3	2,013.6	367.8	251.2	116.63	3.153		
8,800.0	6,808.5	8,755.1	6,735.7	61.7	62.6	-78.58	745.7	2,113.5	367.6	245.6	122.00	3.013		
8,900.0	6,806.9	8,855.1	6,735.3	64.4	65.3	-78.76	745.2	2,213.5	367.3	240.0	127.40	2.884		
9,000.0	6,805.3	8,955.1	6,734.9	67.1	68.0	-78.95	744.6	2,313.5	367.1	234.3	132.81	2.764		
9,100.0	6,803.7	9,055.1	6,734.5	69.8	70.7	-79.13	744.1	2,413.5	366.9	228.7	138.24	2.654		
9,200.0	6,802.1	9,155.1	6,734.1	72.5	73.4	-79.31	743.6	2,513.5	366.7	223.0	143.69	2.552		
9,300.0	6,800.6	9,255.1	6,733.7	75.3	76.1	-79.49	743.0	2,613.5	366.5	217.4	149.16	2.457		
9,400.0	6,799.0	9,355.1	6,733.3	78.0	78.9	-79.68	742.5	2,713.5	366.3	211.7	154.64	2.369		
9,500.0	6,797.4	9,455.1	6,732.9	80.8	81.6	-79.86	742.0	2,813.5	366.1	206.0	160.13	2.286		
9,600.0	6,795.8	9,555.1	6,732.5	83.5	84.3	-80.04	741.4	2,913.5	365.9	200.3	165.63	2.209		
9,700.0	6,794.2	9,655.1	6,732.1	86.3	87.1	-80.23	740.9	3,013.5	365.7	194.6	171.15	2.137		
9,800.0	6,792.6	9,755.1	6,731.7	89.0	89.8	-80.41	740.4	3,113.5	365.6	188.9	176.68	2.069		
9,900.0	6,791.0	9,855.1	6,731.3	91.8	92.6	-80.59	739.8	3,213.4	365.4	183.2	182.21	2.005		
10,000.0	6,789.4	9,955.0	6,730.9	94.6	95.3	-80.78	739.3	3,313.4	365.2	177.4	187.76	1.945		

CC - Min centre to center distance or convergent point, SF - min separation factor, ES - min ellipse separation

<b>Company:</b>	PETROLEUM DEVELOPMENT CORP Weld County CO	<b>Local Co-ordinate Reference:</b>	Well Maxey 24P-332
<b>Project:</b>	SEC.24-T5N-R65W	<b>TVD Reference:</b>	WELL @ 4650.0ft (RKB - 15')
<b>Reference Site:</b>	Maxey 24Q-HZ Pad Sec.24-T5N-R65W	<b>MD Reference:</b>	WELL @ 4650.0ft (RKB - 15')
<b>Site Error:</b>	0.0ft	<b>North Reference:</b>	True
<b>Reference Well:</b>	Maxey 24P-332	<b>Survey Calculation Method:</b>	Minimum Curvature
<b>Well Error:</b>	0.0ft	<b>Output errors are at</b>	2.00 sigma
<b>Reference Wellbore</b>	Wellbore #1	<b>Database:</b>	Landmark
<b>Reference Design:</b>	Plan #2 (8-9-13)	<b>Offset TVD Reference:</b>	Offset Datum

<b>Offset Design</b> Maxey 24Q-HZ Pad Sec.24-T5N-R65W - Maxey 24P-232 - Wellbore #1 - Plan #2 (8-9-13)												<b>Offset Site Error:</b>	0.0 ft
Survey Program: 0-MWD												<b>Offset Well Error:</b>	0.0 ft
Reference		Offset		Semi Major Axis		Highside Toolface (°)	Offset Wellbore Centre		Distance		Minimum Separation (ft)	Separation Factor	Warning
Measured Depth (ft)	Vertical Depth (ft)	Measured Depth (ft)	Vertical Depth (ft)	Reference (ft)	Offset (ft)		+N/-S (ft)	+E/-W (ft)	Between Centres (ft)	Between Ellipses (ft)			
10,100.0	6,787.8	10,055.0	6,730.5	97.3	98.1	-80.96	738.7	3,413.4	365.0	171.7	193.31	1.888	
10,200.0	6,786.3	10,155.0	6,730.1	100.1	100.9	-81.15	738.2	3,513.4	364.9	166.0	198.87	1.835	
10,300.0	6,784.7	10,255.0	6,729.7	102.9	103.6	-81.33	737.7	3,613.4	364.7	160.2	204.44	1.784	
10,400.0	6,783.1	10,355.0	6,729.3	105.7	106.4	-81.52	737.1	3,713.4	364.5	154.5	210.02	1.736	
10,500.0	6,781.5	10,455.0	6,728.9	108.4	109.2	-81.70	736.6	3,813.4	364.4	148.8	215.60	1.690	
10,600.0	6,779.9	10,555.0	6,728.5	111.2	111.9	-81.89	736.1	3,913.4	364.2	143.0	221.19	1.647	
10,700.0	6,778.3	10,655.0	6,728.1	114.0	114.7	-82.07	735.5	4,013.4	364.1	137.3	226.78	1.605	
10,800.0	6,776.7	10,755.0	6,727.7	116.8	117.5	-82.26	735.0	4,113.4	363.9	131.5	232.38	1.566	
10,900.0	6,775.1	10,855.0	6,727.3	119.5	120.3	-82.44	734.4	4,213.4	363.8	125.8	237.99	1.529	
11,000.0	6,773.6	10,955.0	6,726.9	122.3	123.0	-82.63	733.9	4,313.3	363.6	120.0	243.60	1.493 Level 3	
11,100.0	6,772.0	11,055.0	6,726.5	125.1	125.8	-82.81	733.4	4,413.3	363.5	114.3	249.21	1.459 Level 3	
11,200.0	6,770.4	11,155.0	6,726.1	127.9	128.6	-83.00	732.8	4,513.3	363.4	108.5	254.83	1.426 Level 3	
11,222.2	6,770.0	11,176.8	6,726.0	128.5	129.2	-83.04	732.7	4,535.1	363.3	107.3	256.06	1.419 Level 3	
11,223.7	6,770.0	11,176.8	6,726.0	128.6	129.2	-83.04	732.7	4,535.1	363.3	107.2	256.10	1.419 Level 3, SF	

<b>Company:</b>	PETROLEUM DEVELOPMENT CORP Weld County CO	<b>Local Co-ordinate Reference:</b>	Well Maxey 24P-332
<b>Project:</b>	SEC.24-T5N-R65W	<b>TVD Reference:</b>	WELL @ 4650.0ft (RKB - 15')
<b>Reference Site:</b>	Maxey 24Q-HZ Pad Sec.24-T5N-R65W	<b>MD Reference:</b>	WELL @ 4650.0ft (RKB - 15')
<b>Site Error:</b>	0.0ft	<b>North Reference:</b>	True
<b>Reference Well:</b>	Maxey 24P-332	<b>Survey Calculation Method:</b>	Minimum Curvature
<b>Well Error:</b>	0.0ft	<b>Output errors are at</b>	2.00 sigma
<b>Reference Wellbore</b>	Wellbore #1	<b>Database:</b>	Landmark
<b>Reference Design:</b>	Plan #2 (8-9-13)	<b>Offset TVD Reference:</b>	Offset Datum

Offset Design Maxey 24Q-HZ Pad Sec.24-T5N-R65W - Maxey 24Q-112 - Wellbore #1 - Plan #2 (8-9-13)												Offset Site Error:	0.0 ft
Survey Program: 0-MWD												Offset Well Error:	0.0 ft
Reference	Offset	Semi Major Axis		Distance		Warning							
Measured Depth (ft)	Vertical Depth (ft)	Measured Depth (ft)	Vertical Depth (ft)	Reference (ft)	Offset (ft)	Highside Toolface (°)	Offset Wellbore Centre +N/-S (ft)	+E/-W (ft)	Between Centres (ft)	Between Ellipses (ft)	Minimum Separation (ft)	Separation Factor	
0.0	0.0	0.0	0.0	0.0	0.0	90.01	0.0	30.6	30.6				
100.0	100.0	100.0	100.0	0.1	0.1	90.01	0.0	30.6	30.6	30.4	0.22	136.352	
200.0	200.0	200.0	200.0	0.3	0.3	90.01	0.0	30.6	30.6	30.0	0.67	45.451	
300.0	300.0	300.0	300.0	0.6	0.6	90.01	0.0	30.6	30.6	29.5	1.12	27.270	
400.0	400.0	400.0	400.0	0.8	0.8	90.01	0.0	30.6	30.6	29.1	1.57	19.479	
500.0	500.0	500.0	500.0	1.0	1.0	90.01	0.0	30.6	30.6	28.6	2.02	15.150	
600.0	600.0	600.0	600.0	1.2	1.2	90.01	0.0	30.6	30.6	28.2	2.47	12.396	
700.0	700.0	700.0	700.0	1.5	1.5	90.01	0.0	30.6	30.6	27.7	2.92	10.489	
800.0	800.0	800.0	800.0	1.7	1.7	90.01	0.0	30.6	30.6	27.3	3.37	9.090	
900.0	900.0	900.0	900.0	1.9	1.9	90.01	0.0	30.6	30.6	26.8	3.82	8.021	
1,000.0	1,000.0	1,000.0	1,000.0	2.1	2.1	90.01	0.0	30.6	30.6	26.4	4.27	7.176 CC, ES	
1,100.0	1,100.0	1,100.0	1,100.0	2.4	2.4	115.10	0.0	30.6	31.3	26.6	4.72	6.644	
1,200.0	1,199.8	1,199.8	1,199.8	2.6	2.6	123.08	0.0	30.6	33.9	28.7	5.16	6.566	
1,300.0	1,299.5	1,299.5	1,299.5	2.8	2.8	133.67	0.0	30.6	39.3	33.7	5.61	7.015	
1,400.0	1,398.9	1,398.9	1,398.9	3.1	3.0	142.66	0.0	30.6	46.9	40.9	6.06	7.752	
1,500.0	1,498.4	1,498.4	1,498.4	3.3	3.3	149.04	0.0	30.6	55.4	48.9	6.51	8.511	
1,600.0	1,597.9	1,599.9	1,599.9	3.6	3.5	154.37	0.6	29.0	62.7	55.8	6.95	9.025	
1,700.0	1,697.4	1,701.7	1,701.6	3.8	3.7	159.91	2.4	24.0	67.3	60.0	7.39	9.114	
1,800.0	1,796.9	1,803.5	1,803.0	4.1	3.9	166.29	5.5	15.5	69.5	61.7	7.83	8.873	
1,900.0	1,896.3	1,903.5	1,902.3	4.4	4.2	173.28	9.3	5.2	70.7	62.4	8.29	8.535	
2,000.0	1,995.8	2,003.1	2,001.3	4.6	4.4	179.95	13.0	-5.2	72.9	64.2	8.76	8.328	
2,100.0	2,095.3	2,102.7	2,100.3	4.9	4.6	-173.86	16.8	-15.6	76.1	66.8	9.25	8.228	
2,200.0	2,194.8	2,202.3	2,199.3	5.2	4.9	-168.21	20.6	-26.0	80.0	70.3	9.75	8.207	
2,300.0	2,294.3	2,302.0	2,298.3	5.5	5.2	-163.13	24.4	-36.4	84.7	74.4	10.27	8.244	
2,400.0	2,393.8	2,401.6	2,397.3	5.7	5.4	-158.61	28.2	-46.8	89.9	79.1	10.80	8.324	
2,500.0	2,493.2	2,501.2	2,496.3	6.0	5.7	-154.61	31.9	-57.2	95.7	84.3	11.35	8.432	
2,600.0	2,592.7	2,600.8	2,595.3	6.3	6.0	-151.08	35.7	-67.6	101.8	89.9	11.90	8.561	
2,700.0	2,692.2	2,700.5	2,694.3	6.6	6.3	-147.96	39.5	-78.0	108.3	95.9	12.45	8.701	
2,800.0	2,791.7	2,800.1	2,793.4	6.9	6.5	-145.19	43.3	-88.4	115.1	102.1	13.01	8.849	
2,900.0	2,891.2	2,899.7	2,892.4	7.1	6.8	-142.74	47.1	-98.8	122.2	108.6	13.57	9.000	
3,000.0	2,990.7	2,999.3	2,991.4	7.4	7.1	-140.56	50.8	-109.2	129.4	115.2	14.14	9.152	
3,100.0	3,090.1	3,099.0	3,090.4	7.7	7.4	-138.62	54.6	-119.6	136.8	122.1	14.70	9.302	
3,200.0	3,189.6	3,198.6	3,189.4	8.0	7.7	-136.87	58.4	-130.0	144.3	129.0	15.27	9.450	
3,300.0	3,289.1	3,298.2	3,288.4	8.3	8.0	-135.30	62.2	-140.4	152.0	136.1	15.84	9.595	
3,400.0	3,388.6	3,398.2	3,387.9	8.6	8.2	-134.58	65.3	-149.0	159.6	143.3	16.33	9.776	
3,500.0	3,488.1	3,498.2	3,487.8	8.8	8.4	-135.13	67.2	-154.3	167.1	150.3	16.78	9.957	
3,600.0	3,587.6	3,598.0	3,587.5	9.1	8.5	-136.77	68.0	-156.3	174.5	157.3	17.20	10.145	
3,700.0	3,687.0	3,697.5	3,687.0	9.4	8.7	-138.95	68.0	-156.4	182.0	164.4	17.60	10.342	
3,800.0	3,786.5	3,796.9	3,786.5	9.7	8.9	-140.96	68.0	-156.4	189.8	171.8	18.02	10.533	
3,900.0	3,886.0	3,896.4	3,886.0	10.0	9.1	-142.81	68.0	-156.4	197.8	179.4	18.44	10.727	
4,000.0	3,985.5	3,995.9	3,985.5	10.3	9.3	-144.51	68.0	-156.4	206.0	187.1	18.86	10.922	
4,100.0	4,085.0	4,095.4	4,085.0	10.6	9.5	-146.09	68.0	-156.4	214.4	195.1	19.28	11.117	
4,200.0	4,184.5	4,194.9	4,184.5	10.9	9.7	-147.54	68.0	-156.4	222.9	203.2	19.70	11.311	
4,300.0	4,283.9	4,294.4	4,283.9	11.1	9.9	-148.89	68.0	-156.4	231.5	211.4	20.13	11.503	
4,400.0	4,383.4	4,393.8	4,383.4	11.4	10.1	-150.14	68.0	-156.4	240.3	219.7	20.55	11.692	
4,500.0	4,482.9	4,493.3	4,482.9	11.7	10.4	-151.30	68.0	-156.4	249.2	228.2	20.98	11.878	
4,600.0	4,582.4	4,592.8	4,582.4	12.0	10.6	-152.38	68.0	-156.4	258.1	236.7	21.40	12.060	
4,700.0	4,681.9	4,692.3	4,681.9	12.3	10.8	-153.39	68.0	-156.4	267.2	245.4	21.83	12.239	
4,800.0	4,781.3	4,791.8	4,781.3	12.6	11.0	-154.33	68.0	-156.4	276.3	254.1	22.26	12.413	
4,900.0	4,880.8	4,891.3	4,880.8	12.9	11.2	-155.22	68.0	-156.4	285.5	262.8	22.69	12.583	
5,000.0	4,980.3	4,990.7	4,980.3	13.2	11.4	-156.04	68.0	-156.4	294.8	271.7	23.12	12.749	

CC - Min centre to center distance or convergent point, SF - min separation factor, ES - min ellipse separation



<b>Company:</b>	PETROLEUM DEVELOPMENT CORP Weld County CO	<b>Local Co-ordinate Reference:</b>	Well Maxey 24P-332
<b>Project:</b>	SEC.24-T5N-R65W	<b>TVD Reference:</b>	WELL @ 4650.0ft (RKB - 15')
<b>Reference Site:</b>	Maxey 24Q-HZ Pad Sec.24-T5N-R65W	<b>MD Reference:</b>	WELL @ 4650.0ft (RKB - 15')
<b>Site Error:</b>	0.0ft	<b>North Reference:</b>	True
<b>Reference Well:</b>	Maxey 24P-332	<b>Survey Calculation Method:</b>	Minimum Curvature
<b>Well Error:</b>	0.0ft	<b>Output errors are at</b>	2.00 sigma
<b>Reference Wellbore</b>	Wellbore #1	<b>Database:</b>	Landmark
<b>Reference Design:</b>	Plan #2 (8-9-13)	<b>Offset TVD Reference:</b>	Offset Datum

Offset Design Maxey 24Q-HZ Pad Sec.24-T5N-R65W - Maxey 24Q-112 - Wellbore #1 - Plan #2 (8-9-13)													Offset Site Error:	0.0 ft
Survey Program: 0-MWD													Offset Well Error:	0.0 ft
Measured Depth (ft)	Vertical Depth (ft)	Measured Depth (ft)	Vertical Depth (ft)	Reference	Offset	Semi Major Axis	Highside Toolface (°)	Offset Wellbore Centre +N/-S (ft)	Offset Wellbore Centre +E/-W (ft)	Between Centres (ft)	Between Ellipses (ft)	Minimum Separation (ft)	Separation Factor	Warning
5,100.0	5,079.8	5,090.2	5,079.8	13.5	11.6	-156.82		68.0	-156.4	304.1	280.5	23.56	12.910	
5,200.0	5,179.3	5,189.7	5,179.3	13.7	11.8	-157.55		68.0	-156.4	313.5	289.5	23.99	13.067	
5,300.0	5,278.8	5,289.3	5,278.8	14.0	12.0	-158.22		68.0	-156.4	322.1	297.7	24.42	13.191	
5,400.0	5,378.7	5,389.1	5,378.7	14.2	12.2	-158.65		68.0	-156.4	327.7	302.9	24.80	13.213	
5,500.0	5,478.6	5,489.0	5,478.6	14.4	12.5	-158.83		68.0	-156.4	330.0	304.8	25.16	13.116	
5,600.0	5,578.6	5,589.0	5,578.6	14.5	12.7	179.02		68.0	-156.4	330.1	303.6	26.43	12.489	
5,700.0	5,678.6	5,689.0	5,678.6	14.7	12.9	179.02		68.0	-156.4	330.1	303.2	26.84	12.299	
5,800.0	5,778.6	5,789.0	5,778.6	14.9	13.1	179.02		68.0	-156.4	330.1	302.8	27.25	12.114	
5,863.4	5,842.0	5,852.4	5,842.0	15.0	13.2	179.02		68.0	-156.4	330.1	302.5	27.51	11.999	
5,900.0	5,878.6	5,889.0	5,878.5	15.1	13.3	179.01		68.0	-156.3	330.1	302.4	27.66	11.934	
6,000.0	5,978.6	5,987.3	5,976.5	15.3	13.5	177.72		68.0	-148.8	330.3	302.2	28.07	11.768	
6,100.0	6,078.6	6,082.2	6,069.4	15.5	13.6	84.10		67.9	-129.7	331.8	304.4	27.41	12.105	
6,200.0	6,178.2	6,173.6	6,156.0	15.6	13.7	80.05		67.7	-100.6	335.3	307.7	27.58	12.157	
6,300.0	6,276.0	6,262.6	6,236.4	15.7	13.8	76.28		67.5	-62.6	340.1	312.4	27.74	12.261	
6,400.0	6,370.2	6,350.0	6,310.5	15.8	14.0	72.81		67.3	-16.3	346.0	318.1	27.92	12.392	
6,500.0	6,459.2	6,434.9	6,376.9	15.9	14.3	69.74		67.0	36.4	352.4	324.3	28.16	12.515	
6,600.0	6,541.5	6,518.7	6,436.4	16.0	14.7	67.03		66.7	95.4	359.0	330.5	28.51	12.595	
6,700.0	6,615.8	6,600.0	6,487.6	16.1	15.3	64.75		66.4	158.5	365.5	336.4	29.02	12.595	
6,800.0	6,680.7	6,682.9	6,532.6	16.4	16.1	62.81		66.0	228.1	371.3	341.5	29.82	12.452	
6,900.0	6,735.1	6,763.6	6,569.0	17.2	17.1	61.28		65.7	300.2	376.4	345.5	30.96	12.157	
7,000.0	6,778.1	6,843.8	6,597.3	18.4	18.3	60.13		65.3	375.1	380.5	347.9	32.52	11.699	
7,100.0	6,808.9	6,923.5	6,617.6	20.0	19.7	59.36		64.9	452.2	383.3	348.8	34.54	11.098	
7,200.0	6,827.1	7,000.0	6,629.4	21.8	21.2	58.96		64.5	527.7	384.8	347.9	36.94	10.418	
7,300.0	6,832.3	7,082.3	6,633.5	23.8	22.8	58.91		64.1	609.9	384.9	345.1	39.85	9.659	
7,400.0	6,830.7	7,181.2	6,632.7	25.9	25.0	59.00		63.6	708.7	384.5	340.9	43.57	8.825	
7,500.0	6,829.1	7,281.2	6,631.8	28.1	27.3	59.09		63.1	808.7	384.1	336.6	47.52	8.083	
7,600.0	6,827.6	7,381.2	6,631.0	30.5	29.6	59.18		62.6	908.7	383.7	332.0	51.64	7.430	
7,700.0	6,826.0	7,481.2	6,630.1	32.9	32.1	59.27		62.1	1,008.7	383.3	327.4	55.90	6.857	
7,800.0	6,824.4	7,581.2	6,629.3	35.4	34.6	59.36		61.6	1,108.7	382.8	322.6	60.26	6.353	
7,900.0	6,822.8	7,681.2	6,628.4	37.9	37.1	59.46		61.1	1,208.7	382.4	317.7	64.72	5.910	
8,000.0	6,821.2	7,781.2	6,627.6	40.4	39.7	59.55		60.5	1,308.7	382.0	312.8	69.24	5.517	
8,100.0	6,819.6	7,881.2	6,626.7	43.0	42.3	59.64		60.0	1,408.7	381.6	307.8	73.83	5.169	
8,200.0	6,818.0	7,981.2	6,625.9	45.6	44.9	59.73		59.5	1,508.7	381.2	302.7	78.47	4.858	
8,300.0	6,816.4	8,081.2	6,625.0	48.3	47.6	59.82		59.0	1,608.7	380.8	297.6	83.16	4.579	
8,400.0	6,814.8	8,181.1	6,624.2	50.9	50.3	59.91		58.5	1,708.7	380.4	292.5	87.89	4.328	
8,500.0	6,813.3	8,281.1	6,623.3	53.6	52.9	60.01		58.0	1,808.6	380.0	287.3	92.65	4.102	
8,600.0	6,811.7	8,381.1	6,622.4	56.3	55.6	60.10		57.5	1,908.6	379.6	282.2	97.44	3.896	
8,700.0	6,810.1	8,481.1	6,621.6	58.9	58.3	60.19		57.0	2,008.6	379.2	276.9	102.26	3.708	
8,800.0	6,808.5	8,581.1	6,620.7	61.7	61.1	60.28		56.5	2,108.6	378.8	271.7	107.10	3.537	
8,900.0	6,806.9	8,681.1	6,619.9	64.4	63.8	60.38		56.0	2,208.6	378.4	266.4	111.97	3.379	
9,000.0	6,805.3	8,781.1	6,619.0	67.1	66.5	60.47		55.5	2,308.6	378.0	261.1	116.85	3.235	
9,100.0	6,803.7	8,881.1	6,618.2	69.8	69.3	60.56		55.0	2,408.6	377.6	255.8	121.76	3.101	
9,200.0	6,802.1	8,981.1	6,617.3	72.5	72.0	60.66		54.4	2,508.6	377.2	250.5	126.69	2.977	
9,300.0	6,800.6	9,081.1	6,616.5	75.3	74.7	60.75		53.9	2,608.6	376.8	245.2	131.63	2.862	
9,400.0	6,799.0	9,181.1	6,615.6	78.0	77.5	60.85		53.4	2,708.6	376.4	239.8	136.59	2.756	
9,500.0	6,797.4	9,281.1	6,614.7	80.8	80.2	60.94		52.9	2,808.6	376.0	234.4	141.56	2.656	
9,600.0	6,795.8	9,381.1	6,613.9	83.5	83.0	61.03		52.4	2,908.6	375.6	229.0	146.55	2.563	
9,700.0	6,794.2	9,481.1	6,613.0	86.3	85.8	61.13		51.9	3,008.6	375.2	223.7	151.56	2.476	
9,800.0	6,792.6	9,581.1	6,612.2	89.0	88.5	61.22		51.4	3,108.6	374.8	218.2	156.57	2.394	
9,900.0	6,791.0	9,681.1	6,611.3	91.8	91.3	61.32		50.9	3,208.5	374.4	212.8	161.60	2.317	
10,000.0	6,789.4	9,781.1	6,610.5	94.6	94.1	61.41		50.4	3,308.5	374.0	207.4	166.65	2.244	

CC - Min centre to center distance or convergent point, SF - min separation factor, ES - min ellipse separation

<b>Company:</b>	PETROLEUM DEVELOPMENT CORP Weld County CO	<b>Local Co-ordinate Reference:</b>	Well Maxey 24P-332
<b>Project:</b>	SEC.24-T5N-R65W	<b>TVD Reference:</b>	WELL @ 4650.0ft (RKB - 15')
<b>Reference Site:</b>	Maxey 24Q-HZ Pad Sec.24-T5N-R65W	<b>MD Reference:</b>	WELL @ 4650.0ft (RKB - 15')
<b>Site Error:</b>	0.0ft	<b>North Reference:</b>	True
<b>Reference Well:</b>	Maxey 24P-332	<b>Survey Calculation Method:</b>	Minimum Curvature
<b>Well Error:</b>	0.0ft	<b>Output errors are at</b>	2.00 sigma
<b>Reference Wellbore</b>	Wellbore #1	<b>Database:</b>	Landmark
<b>Reference Design:</b>	Plan #2 (8-9-13)	<b>Offset TVD Reference:</b>	Offset Datum

<b>Offset Design</b> Maxey 24Q-HZ Pad Sec.24-T5N-R65W - Maxey 24Q-112 - Wellbore #1 - Plan #2 (8-9-13)												<b>Offset Site Error:</b>	0.0 ft
Survey Program: 0-MWD												<b>Offset Well Error:</b>	0.0 ft
Reference		Offset		Semi Major Axis		Highside Toolface (°)	Distance		Between Centres (ft)	Between Ellipses (ft)	Minimum Separation (ft)	Separation Factor	Warning
Measured Depth (ft)	Vertical Depth (ft)	Measured Depth (ft)	Vertical Depth (ft)	Reference (ft)	Offset (ft)		Offset Wellbore Centre +N/-S (ft)	+E/-W (ft)					
10,100.0	6,787.8	9,881.1	6,609.6	97.3	96.8	61.51	49.9	3,408.5	373.6	201.9	171.70	2.176	
10,200.0	6,786.3	9,981.1	6,608.8	100.1	99.6	61.61	49.4	3,508.5	373.3	196.5	176.77	2.112	
10,300.0	6,784.7	10,081.1	6,607.9	102.9	102.4	61.70	48.9	3,608.5	372.9	191.0	181.84	2.050	
10,400.0	6,783.1	10,181.1	6,607.0	105.7	105.2	61.80	48.3	3,708.5	372.5	185.6	186.93	1.993	
10,500.0	6,781.5	10,281.1	6,606.2	108.4	108.0	61.89	47.8	3,808.5	372.1	180.1	192.03	1.938	
10,600.0	6,779.9	10,381.1	6,605.3	111.2	110.7	61.99	47.3	3,908.5	371.7	174.6	197.14	1.885	
10,700.0	6,778.3	10,481.1	6,604.5	114.0	113.5	62.09	46.8	4,008.5	371.3	169.1	202.27	1.836	
10,800.0	6,776.7	10,581.1	6,603.6	116.8	116.3	62.18	46.3	4,108.5	371.0	163.6	207.40	1.789	
10,900.0	6,775.1	10,681.1	6,602.8	119.5	119.1	62.28	45.8	4,208.5	370.6	158.0	212.54	1.744	
11,000.0	6,773.6	10,781.1	6,601.9	122.3	121.9	62.38	45.3	4,308.5	370.2	152.5	217.69	1.701	
11,100.0	6,772.0	10,881.1	6,601.1	125.1	124.7	62.47	44.8	4,408.5	369.8	147.0	222.85	1.659	
11,200.0	6,770.4	10,981.1	6,600.2	127.9	127.5	62.57	44.3	4,508.4	369.4	141.4	228.02	1.620	
11,223.7	6,770.0	11,004.8	6,600.0	128.6	128.1	62.60	44.2	4,532.1	369.3	140.1	229.25	1.611 SF	



<b>Company:</b>	PETROLEUM DEVELOPMENT CORP Weld County CO	<b>Local Co-ordinate Reference:</b>	Well Maxey 24P-332
<b>Project:</b>	SEC.24-T5N-R65W	<b>TVD Reference:</b>	WELL @ 4650.0ft (RKB - 15')
<b>Reference Site:</b>	Maxey 24Q-HZ Pad Sec.24-T5N-R65W	<b>MD Reference:</b>	WELL @ 4650.0ft (RKB - 15')
<b>Site Error:</b>	0.0ft	<b>North Reference:</b>	True
<b>Reference Well:</b>	Maxey 24P-332	<b>Survey Calculation Method:</b>	Minimum Curvature
<b>Well Error:</b>	0.0ft	<b>Output errors are at</b>	2.00 sigma
<b>Reference Wellbore</b>	Wellbore #1	<b>Database:</b>	Landmark
<b>Reference Design:</b>	Plan #2 (8-9-13)	<b>Offset TVD Reference:</b>	Offset Datum

Offset Design Maxey 24Q-HZ Pad Sec.24-T5N-R65W - Maxey 24Q-302 - Wellbore #1 - Plan #2 (8-9-13)													Offset Site Error:	0.0 ft
Survey Program: 0-MWD													Offset Well Error:	0.0 ft
Measured Depth (ft)	Vertical Depth (ft)	Measured Depth (ft)	Vertical Depth (ft)	Reference (ft)	Offset (ft)	Highside Toolface (°)	Offset Wellbore Centre +N/-S (ft)	+E/-W (ft)	Between Centres (ft)	Between Ellipses (ft)	Minimum Separation (ft)	Separation Factor	Warning	
0.0	0.0	0.0	0.0	0.0	0.0	90.02	0.0	61.3	61.3					
100.0	100.0	100.0	100.0	0.1	0.1	90.02	0.0	61.3	61.3	61.1	0.22	272.703		
200.0	200.0	200.0	200.0	0.3	0.3	90.02	0.0	61.3	61.3	60.6	0.67	90.901		
300.0	300.0	300.0	300.0	0.6	0.6	90.02	0.0	61.3	61.3	60.2	1.12	54.541		
400.0	400.0	400.0	400.0	0.8	0.8	90.02	0.0	61.3	61.3	59.7	1.57	38.958		
500.0	500.0	500.0	500.0	1.0	1.0	90.02	0.0	61.3	61.3	59.3	2.02	30.300		
600.0	600.0	600.0	600.0	1.2	1.2	90.02	0.0	61.3	61.3	58.8	2.47	24.791		
700.0	700.0	700.0	700.0	1.5	1.5	90.02	0.0	61.3	61.3	58.4	2.92	20.977		
800.0	800.0	800.0	800.0	1.7	1.7	90.02	0.0	61.3	61.3	57.9	3.37	18.180		
900.0	900.0	900.0	900.0	1.9	1.9	90.02	0.0	61.3	61.3	57.5	3.82	16.041		
1,000.0	1,000.0	1,000.0	1,000.0	2.1	2.1	90.02	0.0	61.3	61.3	57.0	4.27	14.353 CC, ES		
1,100.0	1,100.0	1,100.0	1,100.0	2.4	2.4	113.64	0.0	61.3	62.0	57.3	4.72	13.135		
1,200.0	1,199.8	1,199.8	1,199.8	2.6	2.6	117.88	0.0	61.3	64.3	59.1	5.16	12.443		
1,300.0	1,299.5	1,299.5	1,299.5	2.8	2.8	124.22	0.0	61.3	68.8	63.2	5.61	12.254		
1,400.0	1,398.9	1,398.9	1,398.9	3.1	3.0	130.63	0.0	61.3	75.0	68.9	6.06	12.362		
1,500.0	1,498.4	1,498.4	1,498.4	3.3	3.3	136.02	0.0	61.3	82.0	75.4	6.52	12.573		
1,600.0	1,597.9	1,597.9	1,597.9	3.6	3.5	140.52	0.0	61.3	89.6	82.6	6.97	12.842		
1,700.0	1,697.4	1,697.4	1,697.4	3.8	3.7	144.31	0.0	61.3	97.6	90.2	7.43	13.141		
1,800.0	1,796.9	1,797.1	1,797.1	4.1	3.9	148.40	-1.3	60.2	106.0	98.1	7.86	13.484		
1,900.0	1,896.3	1,896.2	1,896.1	4.4	4.1	153.59	-5.2	57.0	114.8	106.5	8.26	13.896		
2,000.0	1,995.8	1,994.6	1,994.1	4.6	4.3	159.52	-11.7	51.6	124.9	116.2	8.67	14.404		
2,100.0	2,095.3	2,092.7	2,091.6	4.9	4.5	165.59	-20.1	44.6	136.7	127.6	9.09	15.036		
2,200.0	2,194.8	2,191.0	2,189.2	5.2	4.7	170.73	-28.7	37.5	149.9	140.4	9.53	15.732		
2,300.0	2,294.3	2,289.3	2,286.9	5.5	4.9	175.03	-37.3	30.4	164.1	154.1	9.97	16.451		
2,400.0	2,393.8	2,387.6	2,384.5	5.7	5.1	178.63	-45.9	23.3	179.0	168.6	10.43	17.170		
2,500.0	2,493.2	2,485.9	2,482.2	6.0	5.4	-178.32	-54.5	16.1	194.6	183.7	10.89	17.872		
2,600.0	2,592.7	2,584.1	2,579.8	6.3	5.6	-175.73	-63.2	9.0	210.6	199.2	11.35	18.550		
2,700.0	2,692.2	2,682.4	2,677.5	6.6	5.9	-173.51	-71.8	1.9	227.0	215.1	11.82	19.199		
2,800.0	2,791.7	2,780.7	2,775.1	6.9	6.1	-171.58	-80.4	-5.3	243.6	231.3	12.29	19.816		
2,900.0	2,891.2	2,879.0	2,872.8	7.1	6.4	-169.90	-89.0	-12.4	260.5	247.8	12.77	20.402		
3,000.0	2,990.7	2,977.3	2,970.4	7.4	6.7	-168.43	-97.6	-19.5	277.6	264.4	13.25	20.956		
3,100.0	3,090.1	3,075.6	3,068.1	7.7	6.9	-167.13	-106.2	-26.6	294.9	281.1	13.73	21.479		
3,200.0	3,189.6	3,173.9	3,165.8	8.0	7.2	-165.97	-114.8	-33.8	312.2	298.0	14.21	21.974		
3,300.0	3,289.1	3,272.2	3,263.4	8.3	7.5	-164.93	-123.4	-40.9	329.7	315.0	14.69	22.442		
3,400.0	3,388.6	3,370.5	3,361.1	8.6	7.8	-164.00	-132.0	-48.0	347.3	332.1	15.18	22.883		
3,500.0	3,488.1	3,468.8	3,458.7	8.8	8.0	-163.16	-140.6	-55.1	365.0	349.3	15.66	23.301		
3,600.0	3,587.6	3,567.1	3,556.4	9.1	8.3	-162.39	-149.2	-62.3	382.7	366.6	16.15	23.696		
3,700.0	3,687.0	3,665.4	3,654.0	9.4	8.6	-161.70	-157.8	-69.4	400.5	383.9	16.64	24.070		
3,800.0	3,786.5	3,763.7	3,751.7	9.7	8.9	-161.06	-166.4	-76.5	418.4	401.2	17.13	24.424		
3,900.0	3,886.0	3,861.9	3,849.3	10.0	9.2	-160.47	-175.0	-83.6	436.3	418.6	17.62	24.760		
4,000.0	3,985.5	3,960.2	3,947.0	10.3	9.5	-159.93	-183.6	-90.8	454.2	436.1	18.11	25.079		
4,100.0	4,085.0	4,058.5	4,044.6	10.6	9.8	-159.44	-192.2	-97.9	472.2	453.6	18.60	25.382		
4,200.0	4,184.5	4,156.8	4,142.3	10.9	10.1	-158.97	-200.8	-105.0	490.2	471.1	19.10	25.670		
4,300.0	4,283.9	4,255.1	4,240.0	11.1	10.4	-158.54	-209.4	-112.2	508.2	488.6	19.59	25.944		
4,400.0	4,383.4	4,353.4	4,337.6	11.4	10.6	-158.14	-218.0	-119.3	526.3	506.2	20.08	26.205		
4,500.0	4,482.9	4,451.7	4,435.3	11.7	10.9	-157.77	-226.6	-126.4	544.3	523.8	20.58	26.454		
4,600.0	4,582.4	4,550.0	4,532.9	12.0	11.2	-157.42	-235.3	-133.5	562.4	541.4	21.07	26.692		
4,700.0	4,681.9	4,648.3	4,630.6	12.3	11.5	-157.09	-243.9	-140.7	580.6	559.0	21.57	26.919		
4,800.0	4,781.3	4,757.1	4,738.8	12.6	11.8	-156.80	-252.8	-148.1	598.2	576.2	22.06	27.113		
4,900.0	4,880.8	4,875.6	4,856.9	12.9	12.1	-156.75	-259.3	-153.4	613.0	590.5	22.55	27.183		
5,000.0	4,980.3	4,995.0	4,976.3	13.2	12.3	-156.99	-261.9	-155.6	624.7	601.6	23.03	27.126		

CC - Min centre to center distance or convergent point, SF - min separation factor, ES - min ellipse separation

<b>Company:</b>	PETROLEUM DEVELOPMENT CORP Weld County CO	<b>Local Co-ordinate Reference:</b>	Well Maxey 24P-332
<b>Project:</b>	SEC.24-T5N-R65W	<b>TVD Reference:</b>	WELL @ 4650.0ft (RKB - 15')
<b>Reference Site:</b>	Maxey 24Q-HZ Pad Sec.24-T5N-R65W	<b>MD Reference:</b>	WELL @ 4650.0ft (RKB - 15')
<b>Site Error:</b>	0.0ft	<b>North Reference:</b>	True
<b>Reference Well:</b>	Maxey 24P-332	<b>Survey Calculation Method:</b>	Minimum Curvature
<b>Well Error:</b>	0.0ft	<b>Output errors are at</b>	2.00 sigma
<b>Reference Wellbore</b>	Wellbore #1	<b>Database:</b>	Landmark
<b>Reference Design:</b>	Plan #2 (8-9-13)	<b>Offset TVD Reference:</b>	Offset Datum

Offset Design Maxey 24Q-HZ Pad Sec.24-T5N-R65W - Maxey 24Q-302 - Wellbore #1 - Plan #2 (8-9-13)												Offset Site Error:	0.0 ft
Survey Program: 0-MWD												Offset Well Error:	0.0 ft
Measured Depth (ft)	Vertical Depth (ft)	Measured Depth (ft)	Vertical Depth (ft)	Reference	Offset	Highside Toolface (°)	Offset Wellbore Centre +N/-S (ft)	Offset Wellbore Centre +E/-W (ft)	Between Centres (ft)	Between Ellipses (ft)	Minimum Separation (ft)	Separation Factor	Warning
5,100.0	5,079.8	5,098.5	5,079.8	13.5	12.5	-157.36	-262.0	-155.7	634.1	610.6	23.47	27.018	
5,200.0	5,179.3	5,198.0	5,179.3	13.7	12.7	-157.71	-262.0	-155.7	643.5	619.6	23.90	26.919	
5,300.0	5,278.8	5,297.5	5,278.8	14.0	12.8	-158.06	-262.0	-155.7	652.1	627.8	24.35	26.782	
5,400.0	5,378.7	5,397.3	5,378.7	14.2	13.0	-158.30	-262.0	-155.7	657.7	632.9	24.74	26.581	
5,500.0	5,478.6	5,497.3	5,478.6	14.4	13.2	-158.40	-262.0	-155.7	660.0	634.9	25.11	26.287	
5,600.0	5,578.6	5,597.3	5,578.6	14.5	13.4	179.45	-262.0	-155.7	660.0	633.0	27.00	24.447	
5,700.0	5,678.6	5,697.3	5,678.6	14.7	13.5	179.45	-262.0	-155.7	660.0	632.7	27.38	24.110	
5,800.0	5,778.6	5,797.3	5,778.6	14.9	13.7	179.45	-262.0	-155.7	660.0	632.3	27.76	23.780	
5,900.0	5,878.6	5,897.3	5,878.6	15.1	13.9	179.45	-262.0	-155.7	660.0	631.9	28.14	23.457	
6,000.0	5,978.6	5,997.3	5,978.6	15.3	14.1	179.45	-262.0	-155.7	660.0	631.5	28.52	23.141	
6,100.0	6,078.6	6,097.2	6,078.5	15.5	14.3	89.14	-262.0	-155.6	660.0	632.5	27.53	23.977	
6,200.0	6,178.2	6,195.9	6,176.8	15.6	14.4	89.14	-262.1	-148.0	660.0	632.2	27.84	23.709	
6,300.0	6,276.0	6,294.7	6,273.4	15.7	14.5	89.17	-262.2	-127.7	660.0	632.0	28.08	23.506	
6,400.0	6,370.2	6,393.5	6,366.6	15.8	14.6	89.20	-262.3	-95.1	660.0	631.7	28.29	23.329	
6,500.0	6,459.2	6,492.3	6,454.9	15.9	14.6	89.25	-262.6	-50.7	660.0	631.5	28.56	23.111	
6,600.0	6,541.5	6,591.2	6,536.7	16.0	14.7	89.31	-262.9	4.8	660.0	631.0	28.99	22.763	
6,700.0	6,615.8	6,690.3	6,610.8	16.1	14.8	89.39	-263.2	70.4	660.0	630.2	29.75	22.184	
6,800.0	6,680.7	6,789.4	6,675.8	16.4	15.1	89.47	-263.6	145.1	660.0	629.0	30.98	21.305	
6,900.0	6,735.1	6,888.7	6,730.7	17.2	15.9	89.56	-264.1	227.7	659.9	627.1	32.80	20.120	
7,000.0	6,778.1	6,988.1	6,774.5	18.4	17.2	89.66	-264.6	316.9	659.9	624.7	35.27	18.710	
7,100.0	6,808.9	7,087.7	6,806.4	20.0	18.7	89.77	-265.1	411.2	659.9	621.5	38.37	17.200	
7,200.0	6,827.1	7,187.4	6,825.8	21.8	20.5	89.88	-265.6	508.9	659.9	617.9	41.99	15.716	
7,300.0	6,832.3	7,287.3	6,832.2	23.8	22.5	89.99	-266.1	608.5	659.9	613.9	45.99	14.349	
7,400.0	6,830.7	7,387.3	6,830.7	25.9	24.7	90.00	-266.7	708.5	659.9	609.6	50.27	13.126	
7,500.0	6,829.1	7,487.3	6,829.2	28.1	26.9	90.00	-267.2	808.5	659.9	605.1	54.79	12.043	
7,600.0	6,827.6	7,587.3	6,827.6	30.5	29.3	90.00	-267.8	908.5	659.8	600.3	59.50	11.090	
7,700.0	6,826.0	7,687.3	6,826.0	32.9	31.7	90.00	-268.3	1,008.5	659.8	595.5	64.35	10.253	
7,800.0	6,824.4	7,787.3	6,824.4	35.4	34.2	90.00	-268.9	1,108.5	659.8	590.5	69.32	9.518	
7,900.0	6,822.8	7,887.3	6,822.8	37.9	36.8	90.00	-269.4	1,208.5	659.8	585.4	74.39	8.870	
8,000.0	6,821.2	7,987.3	6,821.2	40.4	39.3	90.00	-269.9	1,308.5	659.8	580.3	79.52	8.297	
8,100.0	6,819.6	8,087.3	6,819.6	43.0	41.9	90.00	-270.5	1,408.4	659.8	575.1	84.72	7.788	
8,200.0	6,818.0	8,187.3	6,818.0	45.6	44.6	90.00	-271.0	1,508.4	659.8	569.8	89.97	7.333	
8,300.0	6,816.4	8,287.3	6,816.4	48.3	47.2	90.00	-271.6	1,608.4	659.8	564.5	95.26	6.926	
8,400.0	6,814.8	8,387.3	6,814.9	50.9	49.9	90.00	-272.1	1,708.4	659.8	559.2	100.58	6.559	
8,500.0	6,813.3	8,487.3	6,813.3	53.6	52.6	90.00	-272.6	1,808.4	659.7	553.8	105.94	6.227	
8,600.0	6,811.7	8,587.3	6,811.7	56.3	55.2	90.00	-273.2	1,908.4	659.7	548.4	111.32	5.926	
8,700.0	6,810.1	8,687.3	6,810.1	58.9	58.0	90.00	-273.7	2,008.4	659.7	543.0	116.73	5.652	
8,800.0	6,808.5	8,787.3	6,808.5	61.7	60.7	90.00	-274.3	2,108.3	659.7	537.6	122.15	5.401	
8,900.0	6,806.9	8,887.3	6,806.9	64.4	63.4	90.00	-274.8	2,208.3	659.7	532.1	127.59	5.170	
9,000.0	6,805.3	8,987.3	6,805.3	67.1	66.1	90.00	-275.3	2,308.3	659.7	526.6	133.04	4.958	
9,100.0	6,803.7	9,087.3	6,803.7	69.8	68.9	90.00	-275.9	2,408.3	659.7	521.2	138.51	4.763	
9,200.0	6,802.1	9,187.3	6,802.2	72.5	71.6	90.00	-276.4	2,508.3	659.7	515.7	143.99	4.581	
9,300.0	6,800.6	9,287.3	6,800.6	75.3	74.3	90.00	-277.0	2,608.3	659.6	510.2	149.48	4.413	
9,400.0	6,799.0	9,387.3	6,799.0	78.0	77.1	90.00	-277.5	2,708.3	659.6	504.7	154.98	4.256	
9,500.0	6,797.4	9,487.3	6,797.4	80.8	79.8	90.00	-278.0	2,808.2	659.6	499.1	160.49	4.110	
9,600.0	6,795.8	9,587.3	6,795.8	83.5	82.6	90.00	-278.6	2,908.2	659.6	493.6	166.00	3.974	
9,700.0	6,794.2	9,687.3	6,794.2	86.3	85.4	90.00	-279.1	3,008.2	659.6	488.1	171.52	3.846	
9,800.0	6,792.6	9,787.3	6,792.6	89.0	88.1	90.00	-279.7	3,108.2	659.6	482.5	177.05	3.725	
9,900.0	6,791.0	9,887.3	6,791.0	91.8	90.9	90.00	-280.2	3,208.2	659.6	477.0	182.58	3.612	
10,000.0	6,789.4	9,987.3	6,789.4	94.6	93.7	90.00	-280.7	3,308.2	659.6	471.4	188.12	3.506	
10,100.0	6,787.8	10,087.3	6,787.9	97.3	96.4	90.00	-281.3	3,408.2	659.6	465.9	193.66	3.406	

CC - Min centre to center distance or convergent point, SF - min separation factor, ES - min ellipse separation

<b>Company:</b>	PETROLEUM DEVELOPMENT CORP Weld County CO	<b>Local Co-ordinate Reference:</b>	Well Maxey 24P-332
<b>Project:</b>	SEC.24-T5N-R65W	<b>TVD Reference:</b>	WELL @ 4650.0ft (RKB - 15')
<b>Reference Site:</b>	Maxey 24Q-HZ Pad Sec.24-T5N-R65W	<b>MD Reference:</b>	WELL @ 4650.0ft (RKB - 15')
<b>Site Error:</b>	0.0ft	<b>North Reference:</b>	True
<b>Reference Well:</b>	Maxey 24P-332	<b>Survey Calculation Method:</b>	Minimum Curvature
<b>Well Error:</b>	0.0ft	<b>Output errors are at</b>	2.00 sigma
<b>Reference Wellbore</b>	Wellbore #1	<b>Database:</b>	Landmark
<b>Reference Design:</b>	Plan #2 (8-9-13)	<b>Offset TVD Reference:</b>	Offset Datum

Offset Design												Maxey 24Q-HZ Pad Sec.24-T5N-R65W - Maxey 24Q-302 - Wellbore #1 - Plan #2 (8-9-13)		Offset Site Error:		0.0 ft
Survey Program: 0-MWD														Offset Well Error:		0.0 ft
Reference		Offset		Semi Major Axis			Distance						Warning			
Measured Depth	Vertical Depth	Measured Depth	Vertical Depth	Reference	Offset	Highside Toolface	Offset Wellbore Centre	Between Centres	Between Ellipses	Minimum Separation	Separation Factor					
(ft)	(ft)	(ft)	(ft)	(ft)	(ft)	(°)	+N/-S (ft)	+E/-W (ft)	(ft)	(ft)	(ft)					
10,200.0	6,786.3	10,187.3	6,786.3	100.1	99.2	90.00	-281.8	3,508.1	659.5	460.3	199.21	3.311				
10,300.0	6,784.7	10,287.3	6,784.7	102.9	102.0	90.00	-282.4	3,608.1	659.5	454.8	204.76	3.221				
10,400.0	6,783.1	10,387.3	6,783.1	105.7	104.8	90.00	-282.9	3,708.1	659.5	449.2	210.31	3.136				
10,500.0	6,781.5	10,487.3	6,781.5	108.4	107.5	90.00	-283.5	3,808.1	659.5	443.6	215.87	3.055				
10,600.0	6,779.9	10,587.3	6,779.9	111.2	110.3	90.00	-284.0	3,908.1	659.5	438.1	221.43	2.978				
10,700.0	6,778.3	10,687.3	6,778.3	114.0	113.1	90.00	-284.5	4,008.1	659.5	432.5	227.00	2.905				
10,800.0	6,776.7	10,787.3	6,776.7	116.8	115.9	90.00	-285.1	4,108.1	659.5	426.9	232.56	2.836				
10,900.0	6,775.1	10,887.3	6,775.2	119.5	118.7	90.00	-285.6	4,208.0	659.5	421.3	238.13	2.769				
11,000.0	6,773.6	10,987.3	6,773.6	122.3	121.5	90.00	-286.2	4,308.0	659.4	415.7	243.70	2.706				
11,100.0	6,772.0	11,087.3	6,772.0	125.1	124.2	90.00	-286.7	4,408.0	659.4	410.2	249.27	2.645				
11,200.0	6,770.4	11,187.3	6,770.4	127.9	127.0	90.00	-287.2	4,508.0	659.4	404.6	254.85	2.588				
11,223.7	6,770.0	11,211.0	6,770.0	128.6	127.7	90.00	-287.4	4,531.7	659.4	403.3	256.17	2.574 SF				

<b>Company:</b>	PETROLEUM DEVELOPMENT CORP Weld County CO	<b>Local Co-ordinate Reference:</b>	Well Maxey 24P-332
<b>Project:</b>	SEC.24-T5N-R65W	<b>TVD Reference:</b>	WELL @ 4650.0ft (RKB - 15')
<b>Reference Site:</b>	Maxey 24Q-HZ Pad Sec.24-T5N-R65W	<b>MD Reference:</b>	WELL @ 4650.0ft (RKB - 15')
<b>Site Error:</b>	0.0ft	<b>North Reference:</b>	True
<b>Reference Well:</b>	Maxey 24P-332	<b>Survey Calculation Method:</b>	Minimum Curvature
<b>Well Error:</b>	0.0ft	<b>Output errors are at</b>	2.00 sigma
<b>Reference Wellbore</b>	Wellbore #1	<b>Database:</b>	Landmark
<b>Reference Design:</b>	Plan #2 (8-9-13)	<b>Offset TVD Reference:</b>	Offset Datum

<b>Offset Design</b> Maxey 24Q-HZ Pad Sec.24-T5N-R65W - Maxey 44-24 (Exist.) - Wellbore #1 - Wellbore #1												<b>Offset Site Error:</b>	0.0 ft
Survey Program: 7300-MWD												<b>Offset Well Error:</b>	0.0 ft
Reference		Offset		Semi Major Axis		Highside Toolface (°)	Distance		Between Centres (ft)	Between Ellipses (ft)	Minimum Separation (ft)	Separation Factor	Warning
Measured Depth (ft)	Vertical Depth (ft)	Measured Depth (ft)	Vertical Depth (ft)	Reference (ft)	Offset (ft)		Offset Wellbore Centre +N/-S (ft)	+E/-W (ft)					
7,600.0	6,827.6	6,809.6	6,809.6	30.5	7.7	93.03	113.0	1,824.9	954.5	916.6	37.94	25.158	
7,700.0	6,826.0	6,808.0	6,808.0	32.9	7.7	92.70	113.0	1,824.9	859.2	818.9	40.36	21.290	
7,800.0	6,824.4	6,806.4	6,806.4	35.4	7.6	92.37	113.0	1,824.9	765.1	722.3	42.83	17.863	
7,900.0	6,822.8	6,804.8	6,804.8	37.9	7.6	92.04	113.0	1,824.9	672.7	627.4	45.35	14.832	
8,000.0	6,821.2	6,803.2	6,803.2	40.4	7.6	91.71	113.0	1,824.9	582.8	534.9	47.91	12.164	
8,100.0	6,819.6	6,801.6	6,801.6	43.0	7.6	91.38	113.0	1,824.9	496.8	446.3	50.50	9.837	
8,200.0	6,818.0	6,800.0	6,800.0	45.6	7.6	91.04	113.0	1,824.9	417.1	363.9	53.12	7.851	
8,300.0	6,816.4	6,798.4	6,798.4	48.3	7.6	90.71	113.0	1,824.9	347.9	292.2	55.75	6.241	
8,400.0	6,814.8	6,796.8	6,796.8	50.9	7.6	90.38	113.0	1,824.9	296.9	238.5	58.41	5.084	
8,500.0	6,813.3	6,795.3	6,795.3	53.6	7.6	90.05	113.0	1,824.9	274.4	213.3	61.07	4.493	
8,514.5	6,813.0	6,795.0	6,795.0	54.0	7.6	90.00	113.0	1,824.9	274.0	212.5	61.46	4.458 CC, ES, SF	
8,600.0	6,811.7	6,793.7	6,793.7	56.3	7.6	89.72	113.0	1,824.9	287.0	223.3	63.75	4.502	
8,700.0	6,810.1	6,792.1	6,792.1	58.9	7.6	89.38	113.0	1,824.9	330.9	264.5	66.44	4.980	
8,800.0	6,808.5	6,790.5	6,790.5	61.7	7.6	89.05	113.0	1,824.9	395.7	326.6	69.14	5.724	
8,900.0	6,806.9	6,788.9	6,788.9	64.4	7.6	88.72	113.0	1,824.9	472.9	401.1	71.84	6.584	
9,000.0	6,805.3	6,787.3	6,787.3	67.1	7.6	88.39	113.0	1,824.9	557.5	482.9	74.54	7.478	
9,100.0	6,803.7	6,785.7	6,785.7	69.8	7.6	88.06	113.0	1,824.9	646.4	569.2	77.25	8.367	
9,200.0	6,802.1	6,784.1	6,784.1	72.5	7.6	87.72	113.0	1,824.9	738.2	658.2	79.97	9.231	
9,300.0	6,800.6	6,782.6	6,782.6	75.3	7.6	87.39	113.0	1,824.9	831.9	749.2	82.68	10.061	
9,400.0	6,799.0	6,781.0	6,781.0	78.0	7.6	87.06	113.0	1,824.9	926.9	841.5	85.40	10.853	

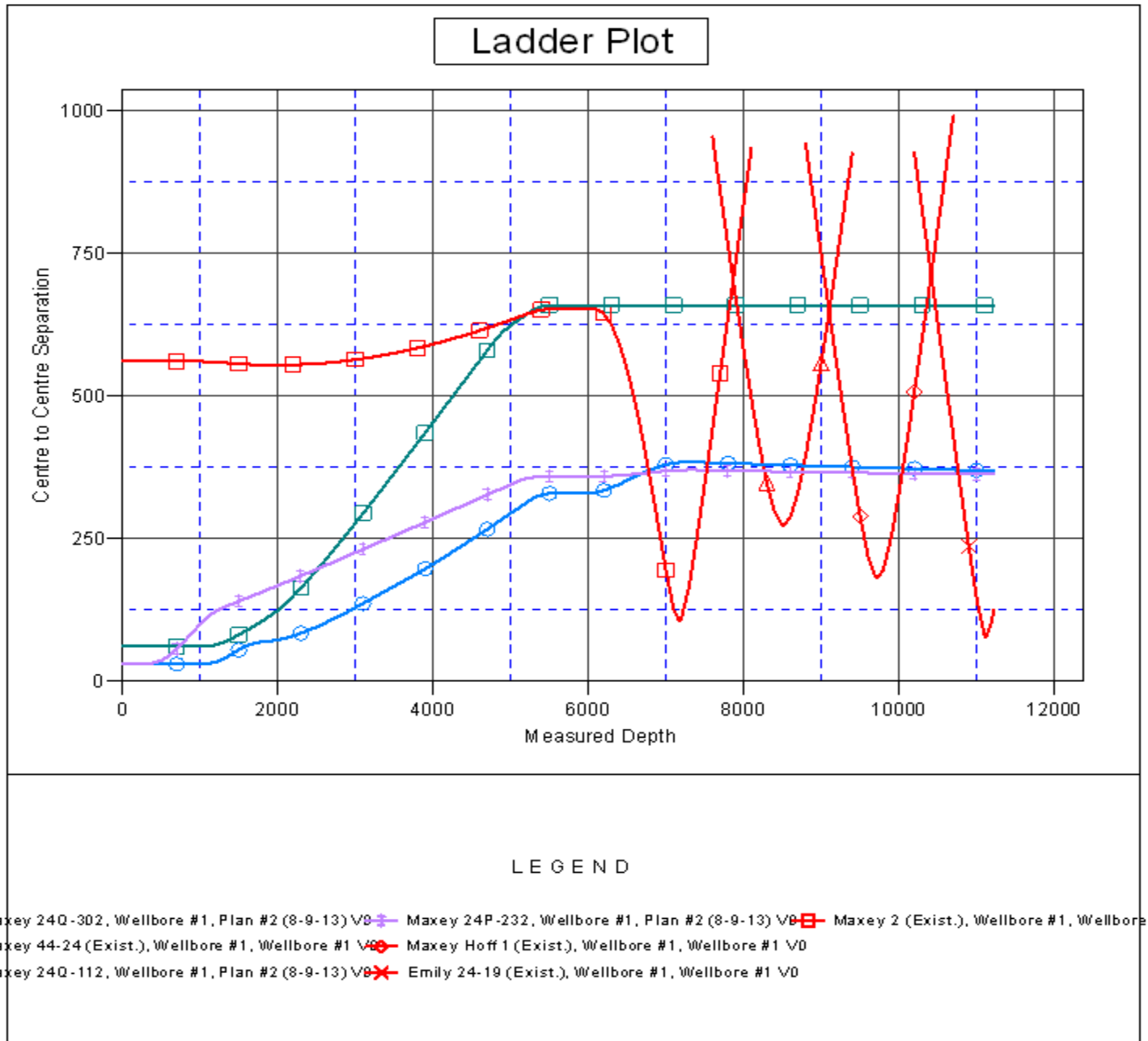
<b>Company:</b>	PETROLEUM DEVELOPMENT CORP Weld County CO	<b>Local Co-ordinate Reference:</b>	Well Maxey 24P-332
<b>Project:</b>	SEC.24-T5N-R65W	<b>TVD Reference:</b>	WELL @ 4650.0ft (RKB - 15')
<b>Reference Site:</b>	Maxey 24Q-HZ Pad Sec.24-T5N-R65W	<b>MD Reference:</b>	WELL @ 4650.0ft (RKB - 15')
<b>Site Error:</b>	0.0ft	<b>North Reference:</b>	True
<b>Reference Well:</b>	Maxey 24P-332	<b>Survey Calculation Method:</b>	Minimum Curvature
<b>Well Error:</b>	0.0ft	<b>Output errors are at</b>	2.00 sigma
<b>Reference Wellbore</b>	Wellbore #1	<b>Database:</b>	Landmark
<b>Reference Design:</b>	Plan #2 (8-9-13)	<b>Offset TVD Reference:</b>	Offset Datum

Offset Design												Maxey 24Q-HZ Pad Sec.24-T5N-R65W - Maxey Hoff 1 (Exist.) - Wellbore #1 - Wellbore #1		Offset Site Error:	0.0 ft
Survey Program: 100-NS-GYRO-MS												Offset Well Error:	0.0 ft		
Reference		Offset		Semi Major Axis			Distance							Warning	
Measured Depth	Vertical Depth	Measured Depth	Vertical Depth	Reference	Offset	Highside Toolface	Offset Wellbore Centre	Between Centres	Between Ellipses	Minimum Separation	Separation Factor				
(ft)	(ft)	(ft)	(ft)	(ft)	(ft)	(°)	+N/-S (ft)	+E/-W (ft)	(ft)	(ft)	(ft)				
8,800.0	6,808.5	6,796.8	6,796.1	61.7	12.3	96.71	199.0	3,036.5	943.2	869.7	73.52	12.830			
8,900.0	6,806.9	6,794.7	6,794.0	64.4	12.3	96.05	198.9	3,036.5	845.4	769.1	76.29	11.080			
9,000.0	6,805.3	6,792.6	6,791.9	67.1	12.3	95.39	198.9	3,036.5	748.0	669.0	79.07	9.460			
9,100.0	6,803.7	6,790.5	6,789.8	69.8	12.3	94.73	198.9	3,036.5	651.5	569.6	81.86	7.959			
9,200.0	6,802.1	6,788.4	6,787.7	72.5	12.3	94.07	198.9	3,036.6	556.2	471.5	84.64	6.571			
9,300.0	6,800.6	6,786.3	6,785.6	75.3	12.3	93.40	198.9	3,036.6	462.8	375.4	87.42	5.294			
9,400.0	6,799.0	6,784.2	6,783.5	78.0	12.3	92.75	198.8	3,036.6	372.9	282.7	90.20	4.134			
9,500.0	6,797.4	6,782.1	6,781.4	80.8	12.3	92.09	198.8	3,036.6	289.7	196.7	92.98	3.116			
9,600.0	6,795.8	6,780.0	6,779.3	83.5	12.3	91.43	198.8	3,036.6	220.9	125.1	95.75	2.307			
9,700.0	6,794.2	6,777.9	6,777.2	86.3	12.3	90.77	198.8	3,036.6	183.4	84.9	98.51	1.862			
9,725.8	6,793.8	6,777.4	6,776.7	87.0	12.3	90.61	198.8	3,036.6	181.6	82.3	99.23	1.830 CC, ES, SF			
9,800.0	6,792.6	6,775.9	6,775.2	89.0	12.3	90.12	198.8	3,036.6	196.1	94.9	101.27	1.937			
9,900.0	6,791.0	6,773.8	6,773.1	91.8	12.3	89.47	198.7	3,036.6	251.6	147.6	104.02	2.419			
10,000.0	6,789.4	6,771.7	6,771.0	94.6	12.3	88.82	198.7	3,036.6	328.8	222.1	106.75	3.080			
10,100.0	6,787.8	6,769.7	6,769.0	97.3	12.3	88.17	198.7	3,036.7	415.8	306.4	109.48	3.798			
10,200.0	6,786.3	6,767.6	6,766.9	100.1	12.3	87.53	198.7	3,036.7	507.7	395.5	112.19	4.525			
10,300.0	6,784.7	6,765.6	6,764.9	102.9	12.3	86.89	198.6	3,036.7	602.1	487.2	114.89	5.241			
10,400.0	6,783.1	6,763.6	6,762.9	105.7	12.3	86.25	198.6	3,036.7	698.1	580.5	117.57	5.937			
10,500.0	6,781.5	6,761.5	6,760.8	108.4	12.3	85.61	198.6	3,036.7	795.0	674.8	120.24	6.612			
10,600.0	6,779.9	6,759.5	6,758.8	111.2	12.3	84.97	198.6	3,036.7	892.7	769.8	122.90	7.263			
10,700.0	6,778.3	6,757.5	6,756.8	114.0	12.3	84.34	198.6	3,036.7	990.8	865.2	125.53	7.892			

<b>Company:</b>	PETROLEUM DEVELOPMENT CORP Weld County CO	<b>Local Co-ordinate Reference:</b>	Well Maxey 24P-332
<b>Project:</b>	SEC.24-T5N-R65W	<b>TVD Reference:</b>	WELL @ 4650.0ft (RKB - 15')
<b>Reference Site:</b>	Maxey 24Q-HZ Pad Sec.24-T5N-R65W	<b>MD Reference:</b>	WELL @ 4650.0ft (RKB - 15')
<b>Site Error:</b>	0.0ft	<b>North Reference:</b>	True
<b>Reference Well:</b>	Maxey 24P-332	<b>Survey Calculation Method:</b>	Minimum Curvature
<b>Well Error:</b>	0.0ft	<b>Output errors are at</b>	2.00 sigma
<b>Reference Wellbore</b>	Wellbore #1	<b>Database:</b>	Landmark
<b>Reference Design:</b>	Plan #2 (8-9-13)	<b>Offset TVD Reference:</b>	Offset Datum

Reference Depths are relative to WELL @ 4650.0ft (RKB - 15')  
Offset Depths are relative to Offset Datum  
Central Meridian is -105.500000 °

Coordinates are relative to: Maxey 24P-332  
Coordinate System is US State Plane 1983, Colorado Northern Zone  
Grid Convergence at Surface is: 0.57°



<b>Company:</b>	PETROLEUM DEVELOPMENT CORP Weld County CO	<b>Local Co-ordinate Reference:</b>	Well Maxey 24P-332
<b>Project:</b>	SEC.24-T5N-R65W	<b>TVD Reference:</b>	WELL @ 4650.0ft (RKB - 15')
<b>Reference Site:</b>	Maxey 24Q-HZ Pad Sec.24-T5N-R65W	<b>MD Reference:</b>	WELL @ 4650.0ft (RKB - 15')
<b>Site Error:</b>	0.0ft	<b>North Reference:</b>	True
<b>Reference Well:</b>	Maxey 24P-332	<b>Survey Calculation Method:</b>	Minimum Curvature
<b>Well Error:</b>	0.0ft	<b>Output errors are at</b>	2.00 sigma
<b>Reference Wellbore</b>	Wellbore #1	<b>Database:</b>	Landmark
<b>Reference Design:</b>	Plan #2 (8-9-13)	<b>Offset TVD Reference:</b>	Offset Datum

Reference Depths are relative to WELL @ 4650.0ft (RKB - 15')  
Offset Depths are relative to Offset Datum  
Central Meridian is -105.500000 °

Coordinates are relative to: Maxey 24P-332  
Coordinate System is US State Plane 1983, Colorado Northern Zone  
Grid Convergence at Surface is: 0.57°

