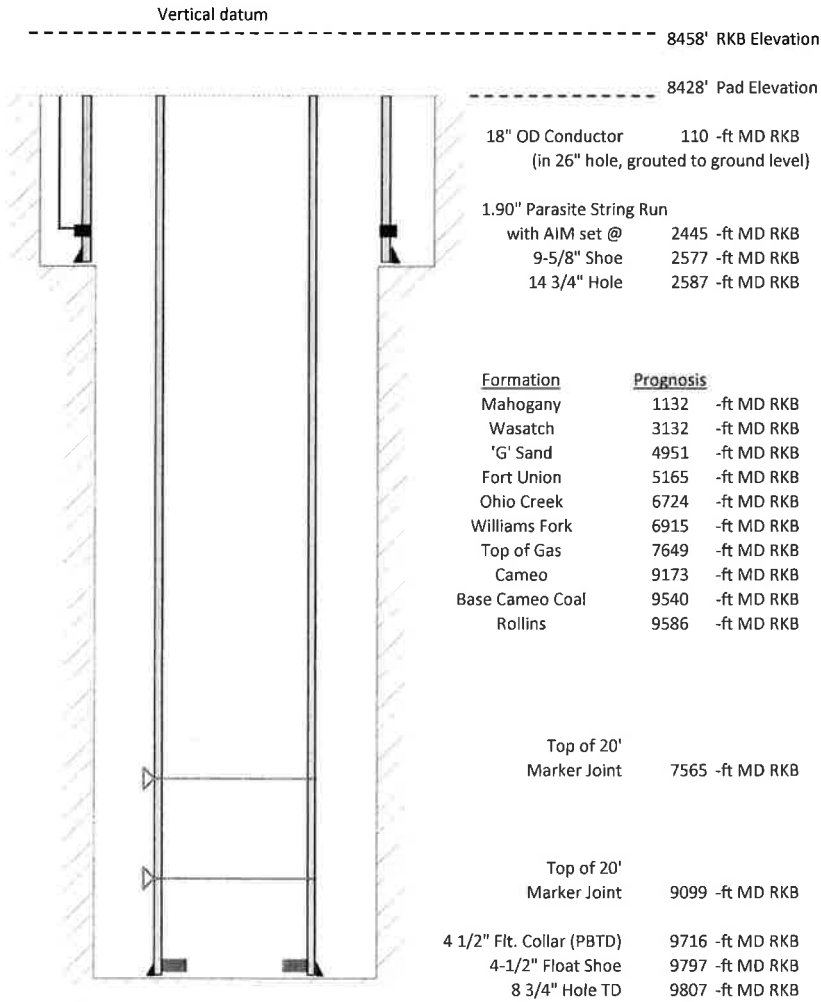


Laramie Energy, LLC
CC Federal 0697-03-08E
Slot B-4
H&P 522 (30-ft KB)

API # : 05-045-23807-00
 Lot 11/S3/T6S/R97W/6th PM
 Garfield County, CO
 Date of diagram : 7/4/2018



Cementing details

8-5/8" 24# Surface Csg	Lead	Tail
Density (ppg)	12.3	12.8
Volume (sx)	1015	292
Yield (cf/sx)	2.38	2.11
Top (ft RKB)	30	2030
Bottom (ft RKB)	2030	2577
Returns (full or partial)	non	non

4-1/2" 11.6# Prod Csg	Lead	Tail
Density (ppg)	12.5	13.0
Volume (sx)	1134	485
Yield (cf/sx)	1.94	2.06
Est Top (ft RKB)	2030	7449
Est Bottom (ft RKB)	7449	9797
Returns (full or partial)	partial	partial

Displacement
8.3 ppg
150 bbls

Other Remarks : Surface : top out with 125 sxs 6 bbls to surface Production 30 bbls
 spacer with parasite on, off no returns