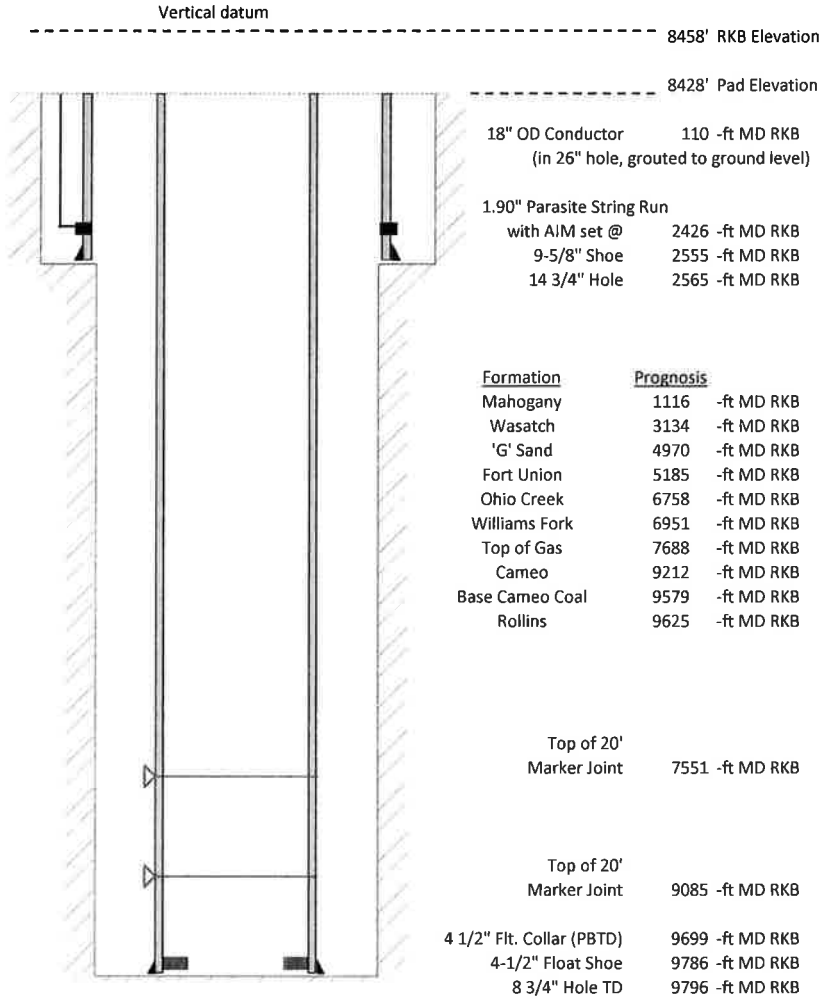


**Laramie Energy, LLC**  
**CC 0697-03-14E**  
**Slot A-9**  
**H&P 522 (30-ft KB)**

API #: 05-045-23801-00  
 Lot 11/S3/T6S/R97W/6th PM  
 Garfield County, CO  
 Date of diagram: 6/28/2018



**Cementing details**

8-5/8" 24# Surface Csg	Lead	Tail
Density (ppg)	12.3	12.8
Volume (sx)	1015	292
Yield (cf/sx)	2.38	2.11
Top (ft RKB)	30	2250
Bottom (ft RKB)	2250	2555
Returns (full or partial)	None	None

4-1/2" 11.6# Prod Csg	Lead	Tail
Density (ppg)	12.5	13.0
Volume (sx)	1143	484
Yield (cf/sx)	1.94	2.06
Est Top (ft RKB)	2030	7488
Est Bottom (ft RKB)	7488	9786
Returns (full or partial)	Part	part

Displacement
8.3 ppg
150 bbls

Other Remarks: Surface : top out with 76 sxs 18 bbls Production: